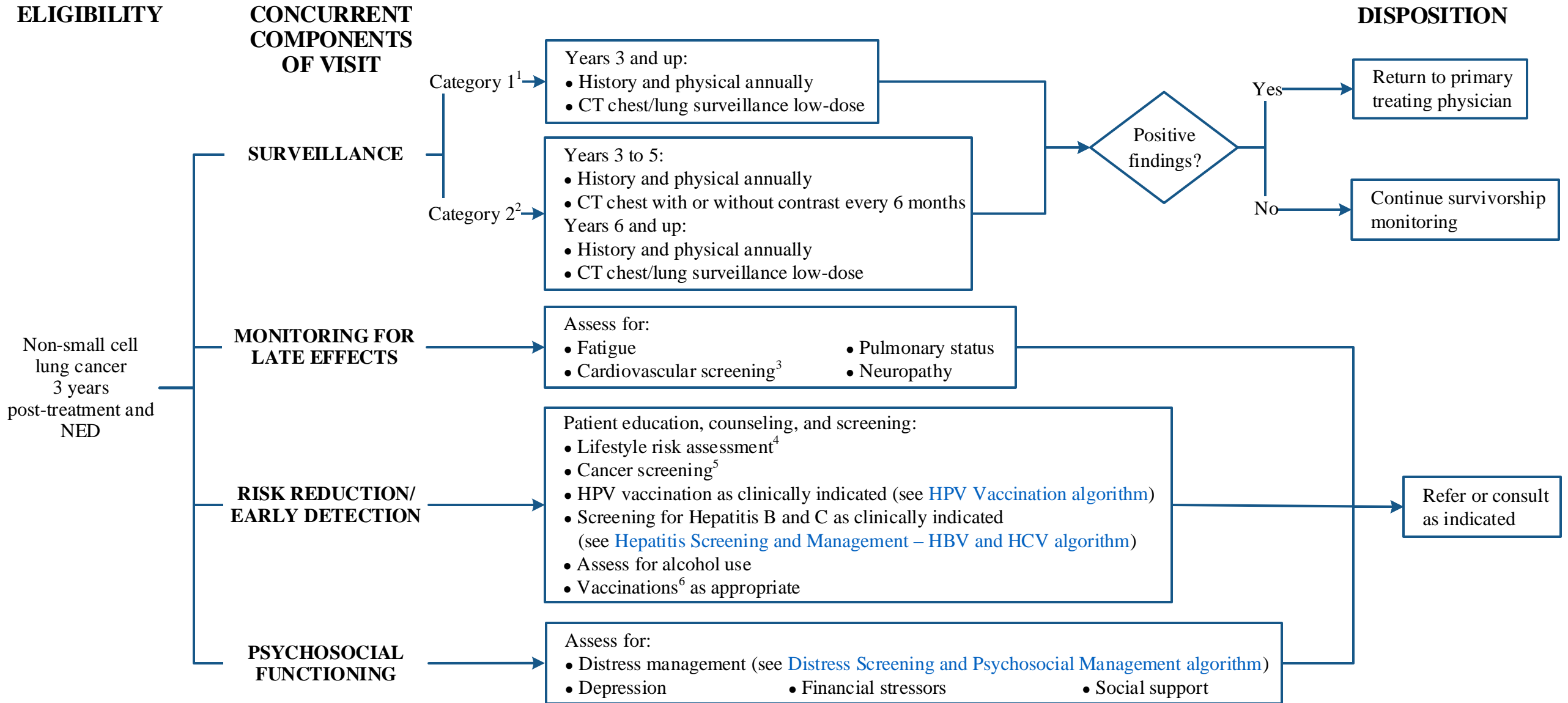


Disclaimer: This algorithm has been developed for MD Anderson using a multidisciplinary approach considering circumstances particular to MD Anderson's specific patient population, services and structure, and clinical information. This is not intended to replace the independent medical or professional judgment of physicians or other health care providers in the context of individual clinical circumstances to determine a patient's care. This algorithm should not be used to treat pregnant women.



NED = no evidence of disease

¹ Category 1 = Stage I-II (primary treatment includes surgery with or without chemotherapy)

² Category 2 = Stage III-IV or Stage I-II treated with radiation

³ Consider use of Vanderbilt's [ABCDE's approach to cardiovascular health](#)

Copyright 2019 The University of Texas MD Anderson Cancer Center

⁴ See [Physical Activity](#), [Nutrition](#), and [Tobacco Cessation](#) algorithms; ongoing reassessment of lifestyle risks should be a part of routine clinical practice

⁵ Includes [breast](#), [cervical](#) (if appropriate), [colorectal](#), [liver](#), [pancreatic](#), [prostate](#), and [skin cancer screening](#)

⁶ Based on [Centers for Disease Control and Prevention \(CDC\) guidelines](#)

Disclaimer: This algorithm has been developed for MD Anderson using a multidisciplinary approach considering circumstances particular to MD Anderson's specific patient population, services and structure, and clinical information. This is not intended to replace the independent medical or professional judgment of physicians or other health care providers in the context of individual clinical circumstances to determine a patient's care. This algorithm should not be used to treat pregnant women.

SUGGESTED READINGS

- Brooks, E.D., Sun, B., Feng, L., Verma, V., Zhao, L., Gomez, D.R., ... Chang, J. Y. (2018). Association of long-term outcomes and survival with multidisciplinary salvage treatment for local and regional recurrence after stereotactic ablative radiotherapy for early-stage lung cancer. *JAMA Network Open*, 1(4), e181390. doi:10.1001/jamanetworkopen.2018.1390
- Calman, L., Beaver, K., Hind, D., Lorigan, P., Roberts, C., & Lloyd-Jones, M. (2011). Survival benefits from follow-up of patients with lung cancer: A systematic review and meta-analysis. *Journal of Thoracic Oncology*, 6(12), 1993-2004. doi:10.1097/JTO.0b013e31822b01a1
- Centers for Disease Control and Prevention. (2018, March 5). *Recommended immunization schedule for adults aged 19 years or older, United States, 2018*. Retrieved from <https://www.cdc.gov/vaccines/schedules/hcp/imz/adult.html>
- Claiborne, P. M., Fowler, C. S., & Vaporciyan, A. A. (2012). Follow-up of patients with resected thoracic malignancies. *Thoracic Surgery Clinics*, 22(1), 123-131. doi:10.1016/j.thorsurg.2011.08.011
- Clark, M. M., Novotny, P. J., Patten, C. A., Rausch, S. M., Garces, Y. I., Jatoi, A., ... Yang, P. (2008). Motivational readiness for physical activity and quality of life in long-term lung cancer survivors. *Lung cancer*, 61(1), 117-122. doi:10.1016/j.lungcan.2007.12.012
- Endo, C., Sakurada, A., Notsuda, H., Noda, M., Hoshikawa, Y., Okada, Y., & Kondo, T. (2012). Results of long-term follow-up of patients with completely resected non-small cell lung cancer. *The Annals of Thoracic Surgery*, 93(4), 1061-1068. doi:10.1016/j.athoracsur.2012.01.004
- Feinstein, M. B., Krebs, P., Coups, E. J., Park, B. J., Steingart, R. M., Burkhalter, J., ... Ostroff, J. S. (2010). Current dyspnea among long-term survivors of early-stage non-small cell lung cancer. *Journal of Thoracic Oncology*, 5(8), 1221-1226. doi:10.1097/JTO.0b013e3181df61c8
- Gooneratne, N. S., Dean, G. E., Rogers, A. E., Nkwuo, J. E., Coyne, J. C., & Kaiser, L. R. (2007). Sleep and quality of life in long-term lung cancer survivors. *Lung Cancer*, 58(3), 403-410. doi:10.1016/j.lungcan.2007.07.011
- Haro, A., Yano, T., Kohno, M., Yoshida, T., Okamoto, T., & Maehara, Y. (2012). Ground-glass opacity lesions on computed tomography during postoperative surveillance for primary non-small cell lung cancer. *Lung Cancer*, 76(1), 56-60.
- Hubbard, M. O., Fu, P., Margevicius, S., Dowlati, A., & Linden, P. A. (2012). Five-year survival does not equal cure in non-small cell lung cancer: A Surveillance, Epidemiology, and End Results based analysis of variables affecting 10-to 18-year survival. *The Journal of Thoracic and Cardiovascular Surgery*, 143(6), 1307-1313. doi:10.1016/j.jtcvs.2012.01.078
- Krebs, P., Coups, E. J., Feinstein, M. B., Burkhalter, J. E., Steingart, R. M., Logue, A., ... Ostroff, J. S. (2012). Health behaviors of early-stage non-small cell lung cancer survivors. *Journal of Cancer Survivorship*, 6(1), 37-44. doi:10.1007/s11764-011-0191-9
- Lee, C. B., Stinchcombe, T. E., Moore, D. T., Morris, D. E., Hayes, D. N., Halle, J., ... Socinski, M. A. (2009). Late complications of high-dose (≥ 66 Gy) thoracic conformal radiation therapy in combined modality trials in unresectable stage III non-small cell lung cancer. *Journal of Thoracic Oncology*, 4(1), 74-79. doi:10.1097/JTO.0b013e3181915028
- National Comprehensive Cancer Network. (2019). *Non-small cell lung cancer* (NCCN Guideline Version 3.2019). Retrieved from https://www.nccn.org/professionals/physician_gls/pdf/nscl.pdf
- Nes, L. S., Liu, H., Patten, C. A., Rausch, S. M., Sloan, J. A., Garces, Y. I., ... Clark, M. M. (2011). Physical activity and quality of life in long-term lung cancer survivors. *Lung Cancer*, 77(3), 611-616. doi: 10.1016/j.lungcan.2012.05.096
- Ostroff, J. S., Krebs, P., Coups, E. J., Burkhalter, J. E., Feinstein, M. B., Steingart, R. M., ... Park, B. J. (2011). Health-related quality of life among early-stage, non-small cell, lung cancer survivors. *Lung Cancer*, 71(1), 103-108. doi:10.1016/j.lungcan.2010.04.011
- Rueth, N. M., Parsons, H. M., Habermann, E. B., Groth, S. S., Virnig, B. A., Tuttle, T. M., ... D'Cunha, J. (2011). The long-term impact of surgical complications after resection of stage I nonsmall cell lung cancer: A population-based survival analysis. *Annals of Surgery*, 254(2), 368-374. doi:10.1097/SLA.0b013e31822150fe

Continued on next page

Disclaimer: This algorithm has been developed for MD Anderson using a multidisciplinary approach considering circumstances particular to MD Anderson's specific patient population, services and structure, and clinical information. This is not intended to replace the independent medical or professional judgment of physicians or other health care providers in the context of individual clinical circumstances to determine a patient's care. This algorithm should not be used to treat pregnant women.

SUGGESTED READINGS

- Sun, B., Brooks, E. D., Komaki, R. U., Liao, Z., Jeter, M. D., McAleer, M. F., ... Chang, J. Y. (2017). 7-year follow-up after stereotactic ablative radiotherapy for patients with stage I non-small cell lung cancer: Results of a phase 2 clinical trial. *Cancer*, 123(16), 3031-3039. doi:10.1002/cncr.30693
- Vanderbilt Cardio-Oncology Program. (2017). *Know Your ABCDE's*. Retrieved from <http://www.cardioonc.org/2017/08/29/know-your-abcs/>
- Westeel, V. (2011). Early detection: 17IN follow-up of the patient after curative treatment. *Lung Cancer*, 71(Suppl.2), S10-S11. Retrieved from [https://www.lungcancerjournal.info/article/S0169-5002\(11\)70154-4/pdf](https://www.lungcancerjournal.info/article/S0169-5002(11)70154-4/pdf)
- Yang, P., Cheville, A. L., Wampfler, J. A., Garces, Y. I., Jatoi, A., Clark, M. M., ... Sloan, J. A. (2012). Quality of life and symptom burden among long-term lung cancer survivors. *Journal of Thoracic Oncology*, 7(1), 64-70. doi:10.1097/JTO.0b013e3182397b3e
- Yun, Y. H., Kim, Y. A., Min, Y. H., Chang, Y. J., Lee, J., Kim, M. S., ... Zo, J. I. (2012). Health-related quality of life in disease-free survivors of surgically treated lung cancer compared with the general population. *Annals of Surgery*, 255(5), 1000-1007. doi:10.1097/SLA.0b013e31824f1e9e

Disclaimer: *This algorithm has been developed for MD Anderson using a multidisciplinary approach considering circumstances particular to MD Anderson's specific patient population, services and structure, and clinical information. This is not intended to replace the independent medical or professional judgment of physicians or other health care providers in the context of individual clinical circumstances to determine a patient's care. This algorithm should not be used to treat pregnant women.*

DEVELOPMENT CREDITS

This survivorship algorithm is based on majority expert opinion of the Thoracic Cancer Survivorship work group at the University of Texas MD Anderson Cancer Center. It was developed using a multidisciplinary approach that included input from the following:

Joe Chang, MD (Thoracic Radiation Oncology)
John Heymach, MD (Thoracic/Head & Neck Medical Oncology)
Thoa Kazantsev, BSN, RN, OCN[♦]
Susan Knippel, RN, FNP-C (Thoracic & Cardiovascular Surgery)
Paula Lewis-Patterson, NP, MSN, NEA-BC (Cancer Prevention)
Stephen Swisher, MD (Surgery)
Ara Vaporciyan, MD (Thoracic & Cardiovascular Surgery)[‡]

[‡] Core Development Team

[♦] Clinical Effectiveness Development Team