

Disclaimer: This algorithm has been developed for MD Anderson using a multidisciplinary approach considering circumstances particular to MD Anderson's specific patient population, services and structure, and clinical information. This is not intended to replace the independent medical or professional judgment of physicians or other health care providers in the context of individual clinical circumstances to determine a patient's care. This algorithm should not be used to treat pregnant women.

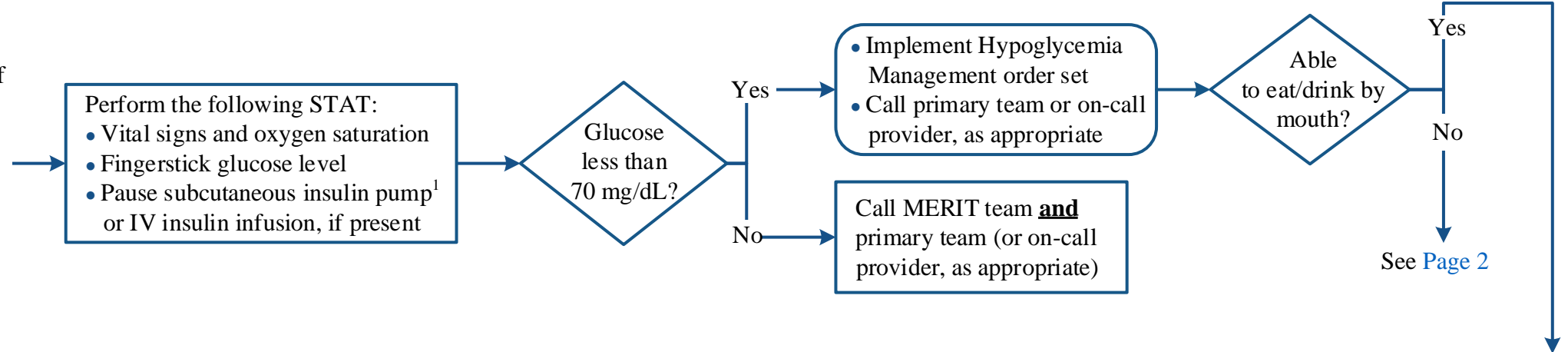
PRESENTATION

Patient receiving hypoglycemic medications or clinical suspicion of hypoglycemia based on signs and symptoms below:

- Diaphoresis
- Shakiness
- Mental status changes
- Headache
- Hunger

Note: Call MERIT team at any time if patient in apparent physical distress

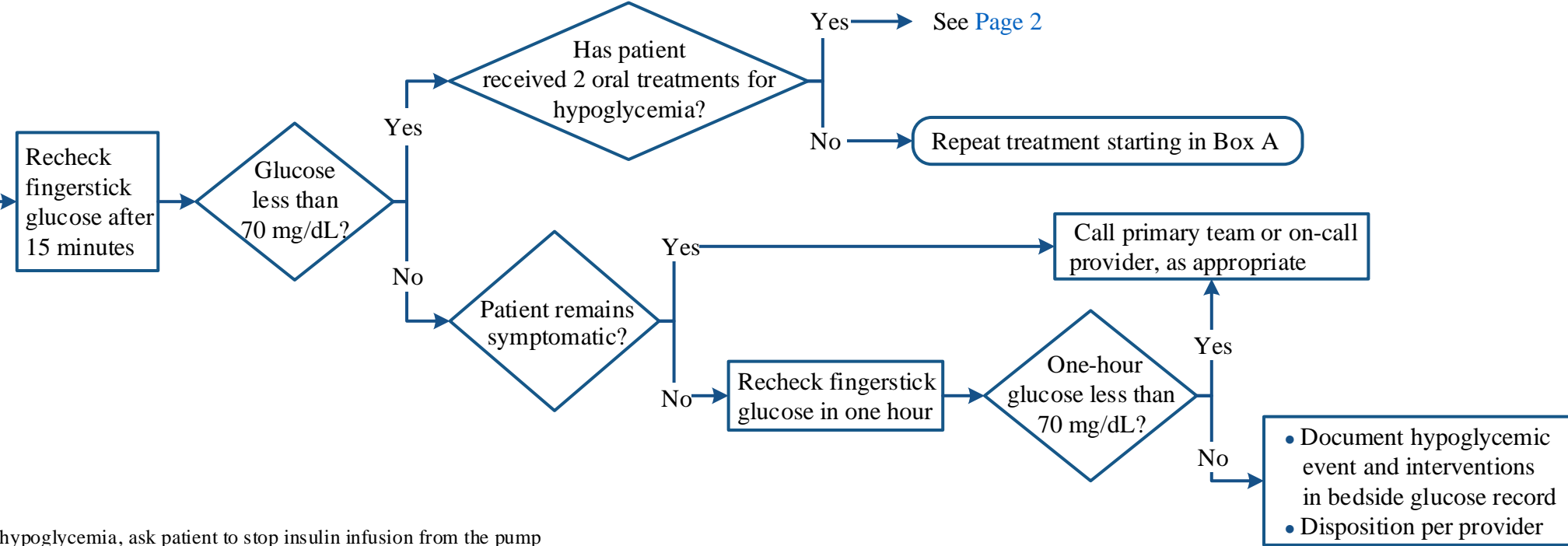
TREATMENT



A

Eat/drink 15-20 grams carbohydrates such as one of the following:

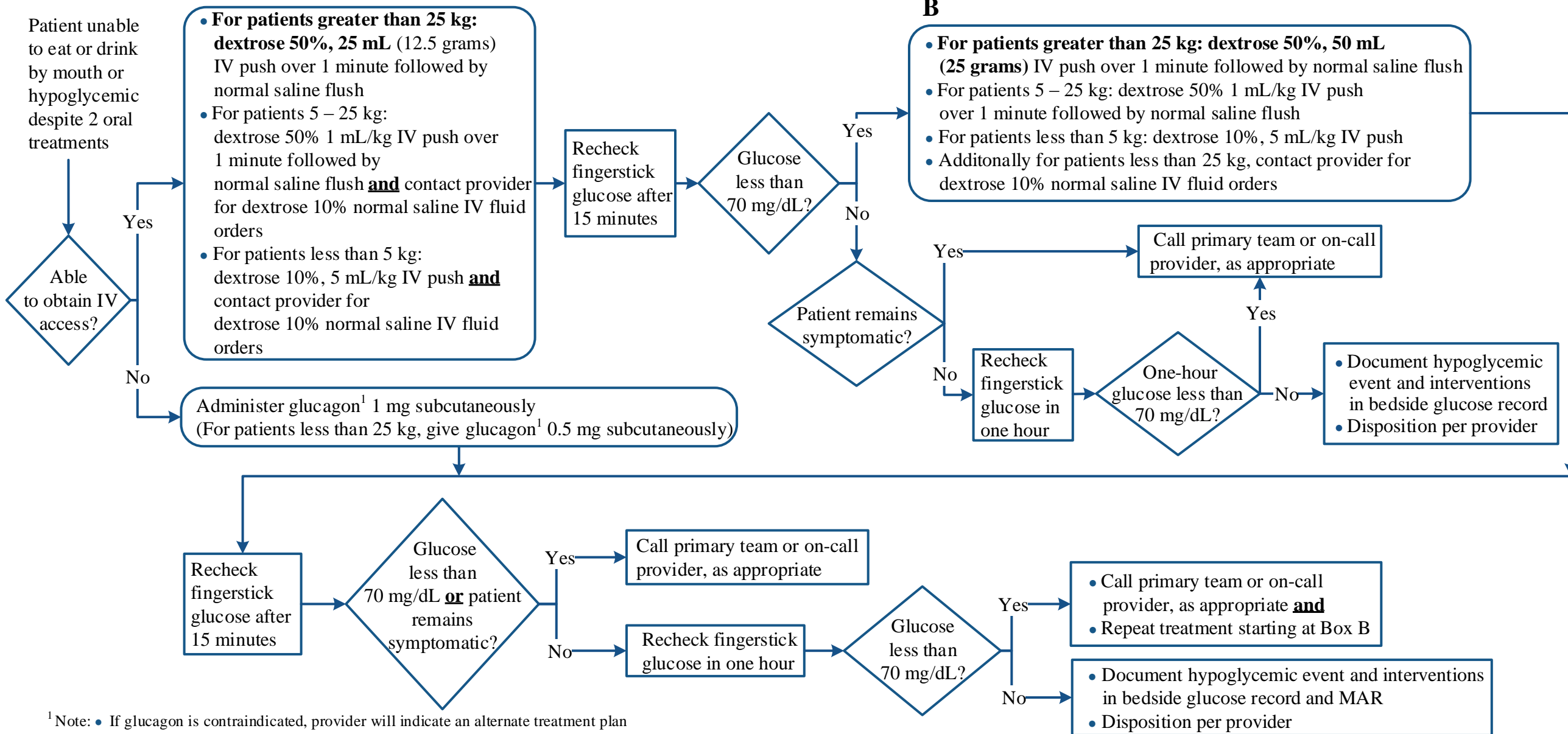
- ½ cup fruit juice
- ¾ cup non-diet soda
- 1 cup milk
- 1 tube (15 g) of oral dextrose 40% gel



¹ If patient has an insulin pump and symptoms of hypoglycemia, ask patient to stop insulin infusion from the pump

Disclaimer: This algorithm has been developed for MD Anderson using a multidisciplinary approach considering circumstances particular to MD Anderson's specific patient population, services and structure, and clinical information. This is not intended to replace the independent medical or professional judgment of physicians or other health care providers in the context of individual clinical circumstances to determine a patient's care. This algorithm should not be used to treat pregnant women.

Note: Call MERIT team at any time if patient in apparent physical distress



¹Note: • If glucagon is contraindicated, provider will indicate an alternate treatment plan
 • In an emergency, satellite pharmacy will dispense glucagon without order

Disclaimer: *This algorithm has been developed for MD Anderson using a multidisciplinary approach considering circumstances particular to MD Anderson's specific patient population, services and structure, and clinical information. This is not intended to replace the independent medical or professional judgment of physicians or other health care providers in the context of individual clinical circumstances to determine a patient's care. This algorithm should not be used to treat pregnant women.*

SUGGESTED READINGS

American Diabetes Association. (January 2011). Standards of Medical Care in Diabetes – 2011. *Diabetes Care*. 34(1):11-61

Cryer, P. E., Axelrod, L., Grossman, A. B., Heller, S. R., Montori, V. M., Seaquist, E. R.,... Service, F. J. (2009). Evaluation and management of adult hypoglycemic disorders: an Endocrine Society Clinical Practice Guideline. *The Journal of Clinical Endocrinology & Metabolism*, 94(3), 709-728.

McEuen, J. A., Gardner, K. P., Barnachea, D. F., Locke, C. L., Backhaus, B. R., & Hughes, S. K. (2010). Cultivating quality: an evidence-based protocol for managing hypoglycemia. *AJN The American Journal of Nursing*, 110(7), 40-45.

Society of Hospital Medicine Glycemic Control Task Force. (2015). Workbook for Improvement: Improving Glycemic Control, Preventing Hypoglycemia, and Optimizing Care of the Inpatient with Hyperglycemia and Diabetes. Retrieved electronically on May 2, 2018 from http://tools.hospitalmedicine.org/resource_rooms/imp_guides/GC/GC_Workbook.pdf

Tomky, Donna. (2005). Detection, Prevention, and Treatment of Hypoglycemia in the Hospital. *Diabetes Spectrum*, 18(1)39-44.

Disclaimer: *This algorithm has been developed for MD Anderson using a multidisciplinary approach considering circumstances particular to MD Anderson's specific patient population, services and structure, and clinical information. This is not intended to replace the independent medical or professional judgment of physicians or other health care providers in the context of individual clinical circumstances to determine a patient's care. This algorithm should not be used to treat pregnant women.*

DEVELOPMENT CREDITS

This practice consensus algorithm is based on majority expert opinion of Hypoglycemia work group at the University of Texas MD Anderson Cancer Center. It was developed using a multidisciplinary approach that included input from the following:

Conor Best, MD (Endocrine Neoplasia and HD)
Tennille Campbell, RN (Nursing)
Katherine Cain, PharmD (Pharmacy Clinical Programs)
Karen Chen, MD (Critical Care & Respiratory Care)
Luisa Gallardo, RN (Nursing Administration)
Shonice Holdman, MBA[♦]
Judy M. Keaveny, RN, MS, CNS M-S, CDE (Internal Medicine)
Victor R. Lavis, MD (Endocrine Neoplasia and HD)[‡]
Rodrigo Mejia, MD (Pediatrics)[‡]
Cindy Murphy, MS, RN-BC, OCN (Nursing Education)
Goley B. Richardson, RN, BSN, OCN (Nursing Administration)
Sonali Thosani, MD (Endocrine Neoplasia and HD)[‡]
Keerat Singh, MSN, RN, CNL (Nursing)
Steven Waguespack, MD (Endocrine Neoplasia and HD)
Sonal Yang, PharmD[♦]
Anita Kuo Ying, MD (Endocrine Neoplasia and HD)[‡]

[‡] Core Development Team Leads

[♦] Clinical Effectiveness Development Team