

## TABLE OF CONTENTS

### SHEET:

- 1 - TABLE OF CONTENTS
- 2 - FINISH SCHEDULE 1 OF 3
- 3 - FINISH SCHEDULE 2 OF 3
- 4 - FINISH SCHEDULE 3 OF 3
- 5 - CONFERENCE FLR 1
- 6 - CONFERENCE (TYPICAL)
- 7 - CORRIDOR (FLRS 1-4)
- 8 - DINING FACILITY
- 9 - LABS (RESEARCH)
- 10 - LAB SUPPORT AREAS
- 11 - LOBBY (FLRS 2-4)
- 12 - LOBBY (FLR 1 - PUBLIC)
- 13 - OFFICE SPACE (FACULTY)
- 14 - OFFICE SPACE (OTHER)
- 15 - STORAGE ROOM
- 16 - TOILETS (FLR 1)
- 17 - TOILETS (TYPICAL - FLRS 2-4)
- 18 - DOCUMENTATION REVISION HISTORY

Important Disclaimer: Colors presented in this file are provided for general color information only. Due to many different monitor settings on individual computers and different light sources - these finishes may appear from actual color. Actual samples are available from the FPDC/FPS library located on the 8th floor of FHB or may be ordered directly from manufacturers.



## SOUTH CAMPUS RESEARCH BUILDING 2

THE UNIVERSITY OF TEXAS  
**MD Anderson  
Cancer Center**

### FACILITIES MANAGEMENT OFFICE OF

FACILITIES PLANNING,  
DESIGN AND  
CONSTRUCTION

INTERIOR FINISH STANDARDS  
FOR

7435 Fannin St.  
**SOUTH CAMPUS  
RESEARCH BUILDING 2  
(SCRB2)**

SHEET TITLE:

### SCRB 2 TABLE OF CONTENTS

LAST UPDATE:

01/15/2014

SHEET NO.:

1 OF 18

FILE NAME: ODGECB5SCR2R1

PRINT

EXIT

NEXT PAGE

Interior Finish Standards

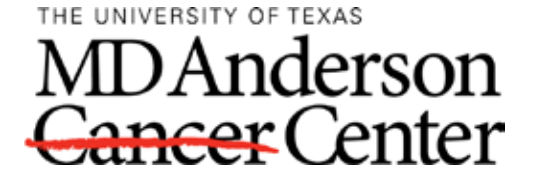
South Campus Research Bldg 2 (SCRB2)

7435 Fannin

Updated: 03/01/2012 (KMB)

This schedule is intended to convey the general MDACC "standard" products used in the indicated room types to assist with the Design Development phase only of renovation or new construction projects. Finish legends and room finish schedules for construction documents MUST be reviewed and approved by the MDACC Planner/Designer assigned to the project. All Planner/Designers are responsible for verifying the information herein for accuracy. Contact Facilities Planning, Design and Construction/Facilities Planning Services (FPS) at ext. 2-2207 to clarify "special" finishes and applications.

Room Type	Flooring	Base	Walls	Wallguards	Doors	Door Frame	Ceiling	Architectural Woodwork	Trim	Window Treatment
Conference Flr 1 Only	<p><b>CPT-34</b> Interface Carpet Tile Nature Trails #172273 04/2011 Changed Yarn System New # 176614</p> <p><b>CPT-35</b> Interface "Adaptations" 50 cm x 50 cm Carpet Tile Custom Color #472277 04/2011 Changed Yarn System New #176615</p>	<p><b>RB-2</b> Roppe "Pinnacle" Brown Black # RP193 4" covered base</p>	<p><b>PT-33</b> Benjamin Moore "China White" Semi Gloss</p> <p><b>PT-35</b> ICI Paints #952 Loden</p> <p><b>FWC-8</b> Knoll Tailor Made W133/6 Sage</p> <p><b>FWC-9</b> Knoll Tailor Made W133/2 Muslin</p>	N/A	<p><b>PL-3</b> Formica "Lacewood Matte" # 744</p> <p><i>"Lite" trim(when applicable):</i> <b>PT-16</b> ICI "Cinnamon Stick" #2Y031A #M02-1275</p>	<p><b>PT-39</b> ICI Forest Black # 578 Semi Gloss</p>	<p><b>ACT-7</b> Celotex "Baroque"</p>	N/A	N/A	
Conference Typical	<p><b>CPB-27</b> Designweave "Palladian" Crete <i>Discontinued</i></p>	<p><b>RB-2</b> Roppe "Pinnacle" Brown Black # RP193 4" covered base</p>	<p><b>PT-33</b> Benjamin Moore "China White" Semi Gloss</p>	N/A	<p><b>PL-3</b> Formica "Lacewood Matte" # 744</p> <p><i>"Lite" trim(when applicable):</i> <b>PT-16</b> ICI "Cinnamon Stick" #2Y031A #M02-1275</p>	<p><b>PT-39</b> ICI Forest Black # 578 Semi Gloss</p>	<p><b>ACT-7</b> Celotex "Baroque"</p>	<p><b>PL-3</b> Formica "Lacewood Matte" #744</p>	N/A	<p><b>WS-5</b> Solarfective Hexcel Fabric 5% #XL5 Charcoal/Grey <i>Hembar paint:</i> <b>PT-117</b> Benj Moore #2125-20 "Deep Space" <b>BWS-5</b> Blackout Shade: Black</p>
Corridors Flrs 1-4	<p><i>Field Color:</i> <b>VCT-6</b> Mannington "Essentials" Cool White # 141</p> <p><i>Accent VCT</i> ALL Mannington "Essentials" <b>VCT-7</b> Aegean #215 Flr 1,4 <b>VCT-8</b> Brick # 288 Flr 2 <b>VCT-10</b> Cornsilk #113 Flr 3</p> <p><i>First Aid Designation</i> <b>VCT-11</b> Armstrong Imperial Texture Std Excelon Cherry Red #51816</p>	<p><b>RB-2</b> Roppe "Pinnacle" Brown Black # RP193 4" covered base</p>	<p><b>PT-33</b> Benjamin Moore "China White" Semi Gloss</p>	<p><b>CG-3</b> Acrovyn Mission White # 933</p>	<p><b>PL-3</b> Formica "Lacewood Matte" # 744</p> <p><i>"Lite" trim(when applicable):</i> <b>PT-16</b> ICI "Cinnamon Stick" #2Y031A #M02-1275</p>	<p><b>PT-39</b> ICI Forest Black # 578 Semi Gloss</p>	<p><b>ACT-7</b> Celotex "Baroque"</p>	<p><b>PL-3</b> Formica "Lacewood Matte" #744</p>	N/A	N/A
Dining Facility	<p><b>CPT-14</b> Interface Carpet Tile Pattern: Cabana #1859 Palm</p> <p><i>Quarry Tile (Kitchen)</i> <b>QT-3</b> DalTile Blaize Flash OQ41 w/ abrasive grain</p> <p><b>TLF-</b> American Tile Supply Cementi AL 2002 Misty Green Rett. Matt. 18"x18" (Dining)</p>	<p><b>TLF-</b> American Tile Supply Cementi AL 2002 Misty Green Battiscopa 4"x18"</p>	<p><i>Porcelain Wall Tile</i> <b>TLW-</b> American Tile Supply Micron Polished, CCI 900/900P 12"x24"</p> <p><b>TLW-</b> American Tile Supply Micron Matte, CCI 900/909M 12"x24"</p> <p>Refer to bldg finish schedule at CP&amp;M for accent dining area tiles</p>					<p><b>SSM-</b> Silestone Stellar Night 3/4" thick slab with bullnose</p>		



FACILITIES  
MANAGEMENT  
OFFICE OF  
FACILITIES PLANNING,  
DESIGN AND  
CONSTRUCTION  
INTERIOR FINISH STANDARDS  
FOR  
7435 Fannin St.  
SOUTH CAMPUS  
RESEARCH BUILDING 2  
(SCRB2)

SHEET TITLE:  
**SCRB 2  
FINISH SCHEDULE  
1 OF 3**

LAST UPDATE:  
**01/15/2014**

SHEET NO.:  
**2** OF **18**

FILE NAME: ODGECB5SCRB2R1

Room Type	Flooring	Base	Walls	Wallguards	Doors	Door Frame	Ceiling	Architectural Woodwork	Trim	Window Treatment
<b>Labs</b> Research	<u>Field Color:</u> <b>VCT-6</b> Mannington "Essentials" Cool White # 141  <u>Accent Options if Applicable</u> ALL Mannington "Essentials" <b>VCT-7</b> Aegean #215 Flr 1,4 <b>VCT-8</b> Brick # 288 Flr 2 <b>VCT-9</b> Sunflower # 263 (Equip.zone in labs) <b>VCT- 10</b> Cornsilk #253 Flr 3  <u>First Aid Designation</u> <b>VCT-11</b> Armstrong Imperial Texture Std Excelon Cherry Red #51816	<b>RB-2</b> Roppe "Pinnacle" Brown Black # RP193 4" covered base	<b>PT-33</b> Benjamin Moore "China White" Semi Gloss  <u>Accent Wall Options</u> <b>PT-7 (Flr. 1,4)</b> B. Moore # 712 Teal <b>PT-48 (Flr. 2)</b> ICI #276 Georgian Clay <b>PT-49 (Flr. 3)</b> ICI # 477 Copper Hill	<b>CG-3</b> Acrovyn Mission White # 933 Verify product use in building	<b>PL-3</b> Formica "Lacewood Matte" # 744  <u>"Lite" trim(when applicable):</u> <b>PT-16</b> ICI "Cinnamon Stick" #2Y031A #M02-1275	<b>PT-39</b> ICI Forest Black # 578 Semi Gloss	<b>ACT-7</b> Celotex "Baroque"	<u>Counter top</u> <b>PL-26</b> Trespa "Top Lab" TO-300 <u>Casework</u> <b>LCW-1</b> Fisher-Hamilton Eggshell EL # 1377	N/A	<b>WS-5</b> Solarfective Hexcel Fabric 5% #XL5 Charcoal/Grey <u>Hembar paint:</u> <b>PT-117</b> Benj Moore #2125-20 "Deep Space" <b>BWS-</b> Blackout Shade: Black
<b>Lab Support</b> <b>Areas</b> (Tissue Culture Rooms , Chemical Fume Hood Rooms)	<b>SHV-20</b> Armstrong Medintech #86476 #88476 Ixia Warm White  <u>Fluid Applied Flooring</u> <b>FAF-</b> Stonhard Stonclad UTS, Medium Texture	<b>SHV-20</b> Armstrong Medintech #86476 #88476 Ixia Warm White integral covered base	<b>PT-33</b> Benjamin Moore China White Semi Gloss		<b>PL-3</b> Formica "Lacewood Matte" # 744  <u>"Lite" trim(when applicable):</u> <b>PT-16</b> ICI "Cinnamon Stick" #2Y031A #M02-1275	<b>PT-39</b> ICI Forest Black # 578 Semi Gloss		<b>PL-16</b> Wilsonart Frosty White #1573-13		
<b>Lobby</b> Elevator Flrs. 2-4	<u>Field Color:</u> <b>VCT-6</b> Mannington "Essentials" Cool White # 141  <u>Accent Options if Applicable</u> ALL Mannington "Essentials" <b>VCT-7</b> Aegean #215 Flr 1,4 <b>VCT-8</b> Brick # 288 Flr 2 <b>VCT-9</b> Sunflower # 263 (Equip.zone in labs) <b>VCT-10</b> Cornsilk #113 Flr 3  <u>First Aid Designation</u> <b>VCT-11</b> Armstrong Imperial Texture Std Excelon Cherry Red #51816	<b>RB-2</b> Roppe "Pinnacle" Brown Black # RP193 4" covered base	<b>PT-33</b> Benjamin Moore "China White" Semi Gloss  <u>Accent Wall Options</u> <b>PT-7 (Flr. 1,4)</b> B. Moore # 712 Teal <b>PT-48 (Flr. 2)</b> ICI #276 Georgian Clay <b>PT-49 (Flr. 3)</b> ICI # 477 Copper Hill	N/A	<b>PL-3</b> Formica "Lacewood Matte" # 744  <u>"Lite" trim(when applicable):</u> <b>PT-16</b> ICI "Cinnamon Stick" #2Y031A #M02-1275	<b>PT-39</b> ICI Forest Black # 578 Semi Gloss	<b>ACT-7</b> Celotex "Baroque"	<b>PL-3</b> Formica "Lacewood Matte" #744		
<b>Lobby</b> Flr 1 Public	<u>Field</u> <b>TRZ-4</b> Southern Tile & Terrazo Sample #10  <u>Accent</u> <b>TRZ-5</b> Southern Tile & terrazo Sample # TS-407-4	Terrazo Base to match floor <b>TRZ-4</b>	<b>PT-33</b> Benjamin Moore "China White" Semi Gloss  <u>Accent Wall</u> <b>PT-35</b> ICI # 952 Loden  <u>Elevator Cab Upper Wall</u> <b>PL-28</b> Wilsonart # 4640-60 Dove Morraine  <u>Elevator Cab Lower Wall:</u> <b>PL-3</b> Formica # 744-58 Lacewood Matte		<b>PL-3</b> Formica "Lacewood Matte" # 744  <u>"Lite" trim(when applicable):</u> <b>PT-16</b> ICI "Cinnamon Stick" #2Y031A #M02-1275	<b>PT-39</b> ICI Forest Black # 578 Semi Gloss	<b>ACT-7</b> Celotex "Baroque"			

**FACILITIES  
MANAGEMENT  
OFFICE OF**

**FACILITIES PLANNING,  
DESIGN AND  
CONSTRUCTION**

**INTERIOR FINISH STANDARDS**

FOR

7435 Fannin St.  
**SOUTH CAMPUS  
RESEARCH BUILDING 2  
(SCRB2)**

SHEET TITLE:

**SCRB 1  
FINISH SCHEDULE  
2 OF 3**

LAST UPDATE:

**01/15/2014**

SHEET NO.:

**3** OF **18**

FILE NAME: ODGECB5SCRB2R1

PRINT

BACK TO  
T.O.C.

NEXT PAGE

Room Type	Flooring	Base	Walls	Wallguards	Doors	Door Frame	Ceiling	Architectural Woodwork	Trim	Window Treatment
Office Space (Faculty)	CPB-27 Designweave "Palladian" Crete Discontinued	RB-2 Roppe "Pinnacle" Brown Black # RP193 4" covered base	PT - 33 Benjamin Moore "China White"	N/A	PL-3 Formica "Lacewood Matte" # 744  <u>"Lite" trim(when applicable):</u> PT-16 ICI "Cinnamon Stick" #2Y031A #M02-1275	PT-39 ICI Forest Black # 578 Semi Gloss	ACT-7 Celotex "Baroque"		N/A	WS-5 Solarfective Hexcel Fabric 5% #XL5 Charcoal/Grey <u>Hembar paint:</u> PT-117 Benj Moore #2125-20 "Deep Space"
Office Space (Other)	CPB-27 Designweave "Palladian" Crete Discontinued	RB-2 Roppe "Pinnacle" Brown Black # RP193 4" covered base	PT-33 Benjamin Moore "China White"	N/A	PL-3 Formica "Lacewood Matte" # 744  <u>"Lite" trim(when applicable):</u> PT-16 ICI "Cinnamon Stick" #2Y031A #M02-1275	PT-39 ICI Forest Black # 578 Semi Gloss	ACT-7 Celotex "Baroque"	PL-16 Wilsonart Frosty White #1573-13	N/A	WS-5 Solarfective Hexcel Fabric 5% #XL5 Charcoal/Grey <u>Hembar paint:</u> PT-117 Benj Moore #2125-20 "Deep Space"
Storage Room	VCT-6 Mannington Essentials Cool White #141	RB-2 Roppe "Pinnacle" Brown Black # RP193 4" covered base	PT-33 Benjamin Moore "China White"	N/A	PL-3 Formica "Lacewood Matte" # 744  <u>"Lite" trim(when applicable):</u> PT-16 ICI "Cinnamon Stick" #2Y031A #M02-1275	PT-39 ICI Forest Black # 578 Semi Gloss	ACT-7 Celotex "Baroque"	PL-16 Wilsonart Frosty White #1573-13	N/A	N/A
Toilets Flr 1	TLF-15 Crossville Ceramic Tile A658 Fawn	TLF-15 Crossville Ceramic Tile A658 Fawn	TLW-3 (Field) Dal Tile D145 Majorca 6"x6"  TLW -10 American Olean "Bright & Matte" Sage # A003	N/A	PL-3 Formica "Lacewood Matte" # 744  <u>"Lite" trim(when applicable):</u> PT-16 ICI "Cinnamon Stick" #2Y031A #M02-1275  <u>Toilet Partitions:</u> MTC-4 Hadrian 523 Celadon	PT-39 ICI Forest Black # 578 Semi Gloss	ACT-7 Celotex "Baroque"	Sink Counter: SSM- Dupont "Corian" Sequoia	N/A	N/A
Toilets Typical Flrs 2-4	TLF-11 Dal Tile Porcelalto CD-58 Bianco Sardo 12x12	TLF-12 Porcelain Covered Tile Base Style: Porcelalto #S3689T (Matches Bianco Sardo CD-58) Size: 8"w x 6"h Finish: Polished Grout: Laticrete #27 Hemp	TLW-3 (Field) Dal Tile D145 Majorca 6"x6"  TLW-4 Dal Tile K162 Teal	N/A	PL-3 Formica "Lacewood Matte" # 744  <u>"Lite" trim(when applicable):</u> PT-16 ICI "Cinnamon Stick" #2Y031A #M02-1275  <u>Toilet Partitions:</u> MTC-2 Hadrian 520 Dark Green	PT-39 ICI Forest Black # 578 Semi Gloss	ACT-7 Celotex "Baroque"	Sink Counter: SSM -9 Dupont "Corian" Evergreen	N/A	N/A

FACILITIES  
MANAGEMENT  
OFFICE OF

FACILITIES PLANNING,  
DESIGN AND  
CONSTRUCTION

INTERIOR FINISH STANDARDS  
FOR

7435 Fannin St.  
SOUTH CAMPUS  
RESEARCH BUILDING 2  
(SCRB2)

SHEET TITLE:

SCRB 1  
FINISH SCHEDULE  
3 OF 3

LAST UPDATE:

01/15/2014

SHEET NO.:

4 OF 18

FILE NAME: ODGECB5SCRB2R1

PRINT

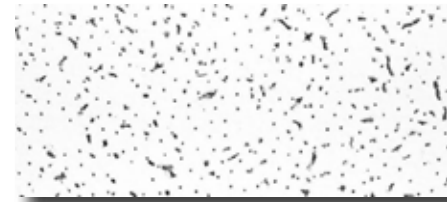
BACK TO  
T.O.C.

NEXT PAGE

# FINISH LEGEND

## CEILING

ACT-7 Celotex  
Color: Baroque



ACT-7

## DOORS/DOOR FRAMES

PL-3 Formica  
No.: 744, Lacewood Matte



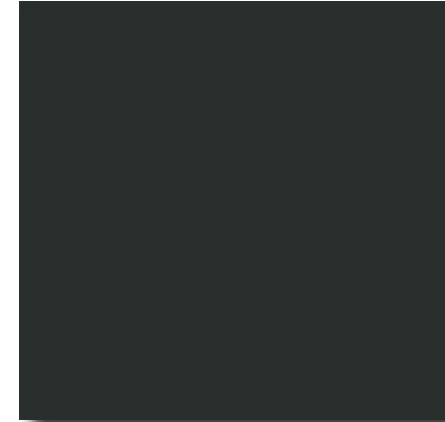
PT-33

PT-16 ICI  
Color: Cinnamon Stick  
No.: MO2-1275  
"Lite" trim  
(when applicable)



PT-35

PT-39 ICI  
Color: Forest Black,  
Semi Gloss  
No.: #578



PT-39



PT-16

## WALLS

PT-33 Benjamin Moore  
Color: China White,  
Semi Gloss



FWC-8

PT-35 ICI Paints  
Color: #952 Loden



FWC-9

FWC-8 Knoll Tailor Made  
W133/6 Sage

FWC-9 Knoll Tailor Made  
W133/2 Muslin



RB-2

## FLOORS

CPT-34 Interface  
"Nature Trails"  
No.: 176614



CPT-34

CPT-35 Interface,  
"Adaptations"  
50cm X 50cm Tile  
No.: 176615



PL-3

## BASE

RB-2 Roppe "Pinnacle", 4" Coved  
Color: Brown Black  
No.: RP193



CPT-35

Important Disclaimer: Colors presented in this file are provided for general color information only. Due to many different monitor settings on individual computers and different light sources - these finishes may appear from actual color. Actual samples are available from the FPDC/FPS library located on the 8th floor of FHB or may be ordered directly from manufacturers.

SHEET TITLE:

**SCRB 2**  
**CONFERENCE**  
**FLR 1 ONLY**

LAST UPDATE:

**01/15/2014**

SHEET NO.:

**5** OF **18**

FILE NAME: ODGECB5SCRB2R1

PRINT

BACK TO  
T.O.C.

NEXT PAGE

# FINISH LEGEND

## CEILING

ACT-7 Celotex  
Color: Baroque

## WINDOW TREATMENT

WS-5 Solarfective  
Hexcel Fabric 5%  
No: XL5  
Color: Charcoal/Grey

PT-117 Benjamin Moore  
Color: Deep Space  
No.: 2125-20  
(Hem Bar Paint)

BWS-5 Blackout Shade  
Color: Black

## DOORS/DOOR FRAMES

PL-3 Formica  
No.: 744, Lacewood Matte

PT-16 ICI  
Color: Cinnamon Stick  
No.: M02-1275  
"Lite" trim (when applicable)

PT-39 ICI  
Color: Forest Black, Semi Gloss  
No.: #578

## ARCHITECTURAL WOODWORK

PL-3 Formica  
No.: 744, Lacewood Matte

## WALLS

PT-33 Benjamin Moore  
Color: China White, Semi Gloss

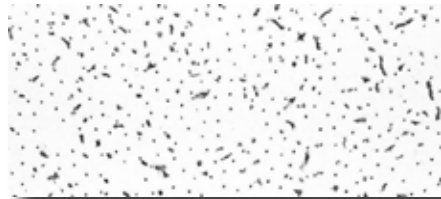
## FLOORS

CPB-27 Designweave  
Color: Palladian, Crete

## BASE

RB-2 Roppe "Pinnacle", 4" Covered  
Color: Brown Black  
No.: RP193

**Important Disclaimer:** Colors presented in this file are provided for general color information only. Due to many different monitor settings on individual computers and different light sources - these finishes may appear from actual color. Actual samples are available from the FPDC/FPS library located on the 8th floor of FHB or may be ordered directly from manufacturers.



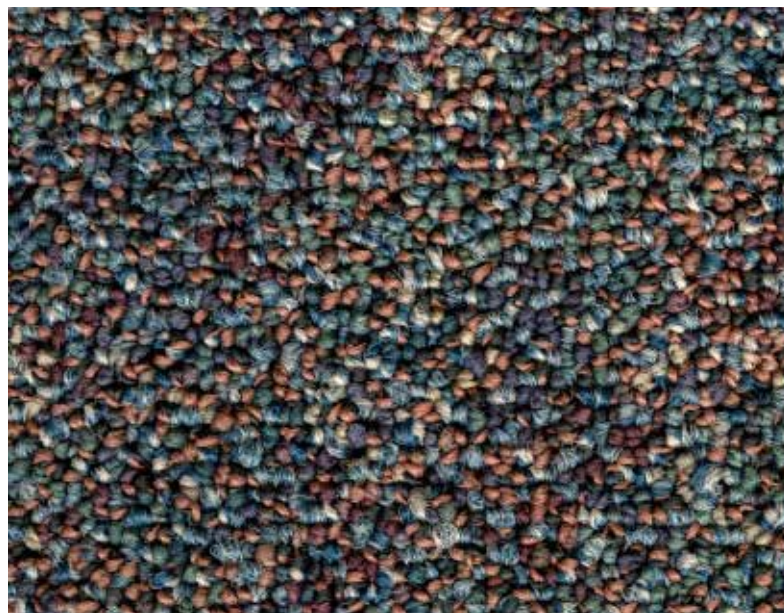
ACT-7



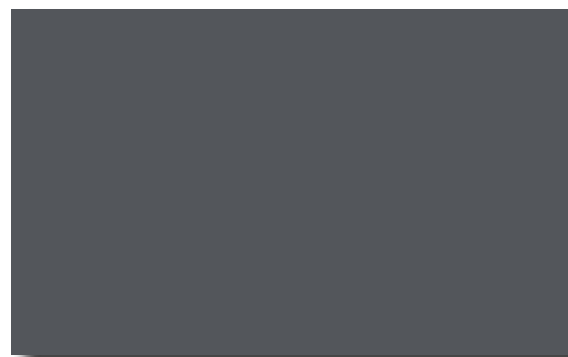
PT-33



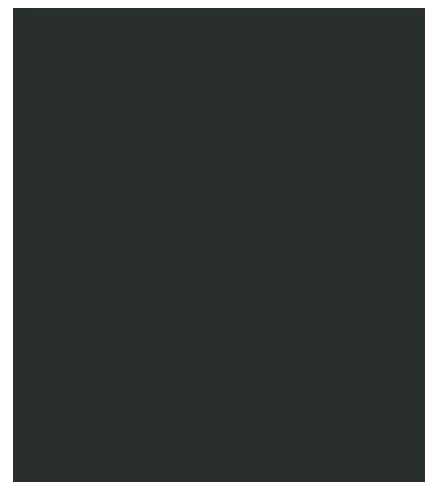
RB-2



CPB-27



PT-117



PT-39



BWS-5



WS-5



PT-16

PL-3

THE UNIVERSITY OF TEXAS

**MD Anderson**  
~~Cancer Center~~

FACILITIES  
MANAGEMENT  
OFFICE OF

FACILITIES PLANNING,  
DESIGN AND  
CONSTRUCTION

INTERIOR FINISH STANDARDS  
FOR

7435 Fannin St.  
**SOUTH CAMPUS**  
**RESEARCH BUILDING 2**  
(SCRB2)

SHEET TITLE:

**SCRB2**  
**CONFERENCE**  
**(TYPICAL)**

LAST UPDATE:

**01/15/2014**

SHEET NO.:

**6** OF **18**

FILE NAME: ODGECB5SCRB2R1

PRINT

BACK TO  
T.O.C.

NEXT PAGE

# FINISH LEGEND

## CEILING

ACT-7 Celotex  
Color: Baroque

## DOORS/DOOR FRAMES

PL-3 Formica  
No.: 744, Lacewood Matte

PT-16 ICI  
Color: Cinnamon Stick  
No.: M02-1275  
"Lite" trim (when applicable)

PT-39 ICI  
Color: Forest Black,  
Semi Gloss  
No.: #578

## ARCHITECTURAL WOODWORK

PL-3 Formica  
No.: 744, Lacewood Matte

## WALLS

PT-33 Benjamin Moore  
Color: China White,  
Semi Gloss

## WALLGUARDS

CG-3 Acrovyn  
Color: Mission White  
No.: 933

## FLOORS

Field Color:  
VCT-6 Mannington "Essentials"  
Color: Cool White  
No.: 141

Accent VCT:  
VCT-7 Mannington "Essentials"  
(Flr 1,4) Color: Aegean  
No.: 215

VCT-8 Mannington "Essentials"  
(Flr 2) Color: Brick  
No.: 288

VCT-10 Mannington "Essentials"  
(Flr 3) Color: Marigold  
No.: 253

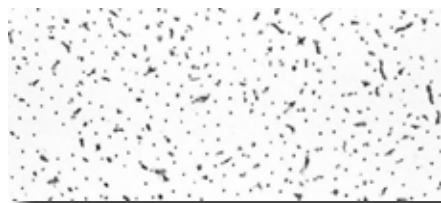
## First Aid Designation:

VCT-11 Armstrong  
Imperial Texture Std. Excelon  
Color: Cherry Red  
No.: 51816

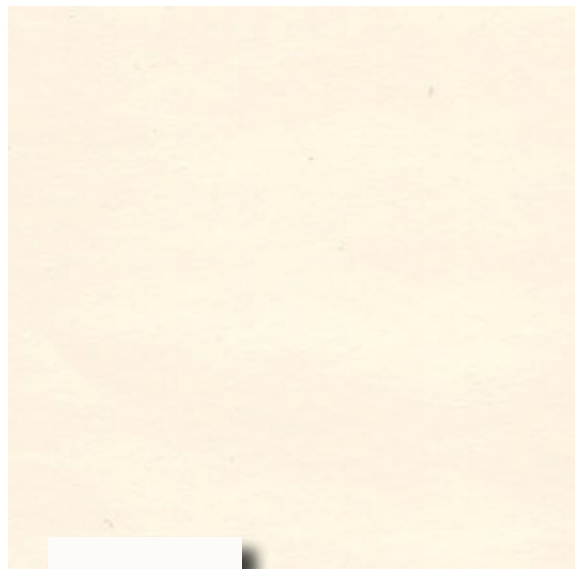
## BASE

RB-2 Roppe "Pinnacle", 4" Cove

Important Disclaimer: Colors presented in this file are provided for general color information only. Due to many different monitor settings on individual computers and different light sources - these finishes may appear from actual color. Actual samples are available from the FPDC/FPS library located on the 8th floor of FHB or may be ordered directly from manufacturers.



ACT-7



PT-33



CG-3



RB-2



PT-39



PT-16



PL-3



VCT-6



VCT-7



VCT-8



VCT-10



VCT-11

## FACILITIES MANAGEMENT OFFICE OF

FACILITIES PLANNING,  
DESIGN AND  
CONSTRUCTION

INTERIOR FINISH STANDARDS  
FOR

7435 Fannin St.  
**SOUTH CAMPUS**  
**RESEARCH BUILDING 2**  
(SCRB2)

SHEET TITLE:

**SCRB2**  
**CORRIDORS**  
**FLRS 1 - 4**

LAST UPDATE:

**01/15/2014**

SHEET NO.:

**7** OF **18**

FILE NAME: ODGECBSCR2R1

PRINT

BACK TO  
T.O.C.

NEXT PAGE

# FINISH LEGEND

## ARCHITECTURAL WOODWORK

SSM- Stilestone  
Stellar Night  
3/4" thick slab w/ bullnose

## WALLS

TLW- American Tile Supply  
Micron Polished, CCI  
900/900P 12"X24"  
TLW- American Tile Supply  
Micron Matte, CCI  
900/900M 12"X24"

REFER TO BLDG FINISH SCHEDULE AT  
CP&M FOR ACCENT DINING AREA TILES

## FLOORS

CPT-14 Interface Carpet Tile  
Pattern: Cabana  
#1859

### Quarry Tile (Kitchen):

QT-3 DalTile  
Blaze Finish  
OQ41 w/ Abrasive Grain

### Dining:

TLF- American Tile Supply  
Cementi AL 2002  
Misty Green Rett. Matt.  
18"X18"

## BASE

Dining:  
TLF- American Tile Supply  
Cementi AL 2002  
Misty Green  
Battiscopa 4" X18"

Important Disclaimer: Colors presented in this file are provided for general color information only. Due to many different monitor settings on individual computers and different light sources - these finishes may appear from actual color. Actual samples are available from the FPDC/FPS library located on the 8th floor of FHB or may be ordered directly from manufacturers.



TLF-



SSM-



QT-3

THE UNIVERSITY OF TEXAS

**MDAnderson**  
~~Cancer~~ Center

FACILITIES  
MANAGEMENT  
OFFICE OF

FACILITIES PLANNING,  
DESIGN AND  
CONSTRUCTION

INTERIOR FINISH STANDARDS  
FOR

7435 Fannin St.  
**SOUTH CAMPUS**  
**RESEARCH BUILDING 2**  
(SCRB2)

SHEET TITLE:

**SCRB2**  
**DINING FACILITY**

LAST UPDATE:

**01/15/2014**

SHEET NO.:

**8** OF **18**

FILE NAME: ODGECBSCR2R1

PRINT

BACK TO  
T.O.C.

NEXT PAGE



# FINISH LEGEND

## CEILING

ACT-7 Celotex  
Color: Baroque

## DOORS/DOOR FRAMES

PL-3 Formica  
No.: 744, Lacewood Matte

PT-16 ICI  
Color: Cinnamon Stick  
No.: MO2-1275  
"Lite" trim (when applicable)

PT-39 ICI  
Color: Forest Black, Semi Gloss  
No.: #57B

## ARCHITECTURAL WOODWORK

Counter Top:  
PL-26 Trespa, Top Lab  
No.: TO-300

Casework:  
LCW-1 Fisher-Hamilton  
Color: Eggshell, EL#1377

## WINDOW TREATMENT

WS-5 Solarfective  
Hexcel Fabric 5%  
No.: XL5  
Color: Charcoal/Grey

PT-117 Benjamin Moore  
Color: Deep Space  
No.: 2125-20  
(HemBar Paint)

BWS-5 Blackout Shade  
Color: Black

## WALLS

PT-33 Benjamin Moore  
Color: China White, Semi Gloss

## Accent Wall Options:

PT-7 Benjamin Moore  
(Flr 1,4) Color: #712 Teal

PT-48 ICI  
(Flr 2) Color: #276 Georgian Clay

PT-49 ICI  
(Flr 3) Color: #477 Copper Hill

## WALLGUARDS

CG-3 Acrovyn  
Color: Mission White  
No.: 933

## FLOORS

Field Color:  
VCT-6 Mannington "Essentials"  
Color: Cool White  
No.: 141

Accent VCT:  
VCT-7 Mannington "Essentials"  
(Flr 1,4) Color: Aegean  
No.: 215

VCT-8 Mannington "Essentials"  
(Flr 2) Color: Brick  
No.: 288

VCT-9 Mannington "Essentials"  
(Equip. Zone in Labs) Color: Sunflower  
No.: 263

VCT-10 Mannington "Essentials"  
(Flr 3) Color: Marigold  
No.: 253

VCT-11 Mannington "Essentials"  
(Flr 3) Color: Marigold  
No.: 253

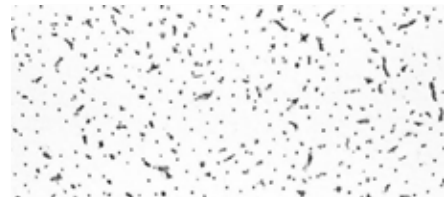
## First Aid Designation:

VCT-11 Armstrong  
Imperial Texture Std. Excelon  
Color: Aegean  
No.: 215

## BASE

RB-2 Roppe "Pinnacle", 4" Cove  
Color: Brown Black  
No.: RP193

Important Disclaimer: Colors presented in this file are provided for general color information only. Due to many different monitor settings on individual computers and different light sources - these finishes may appear from actual color. Actual samples are available from the FPDC/FPS library located on the 8th floor of FHB or may be ordered directly from manufacturers.



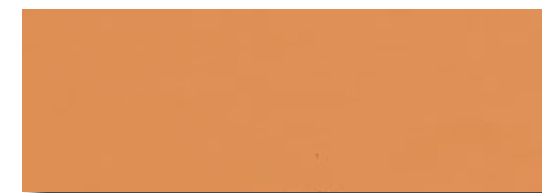
ACT-7



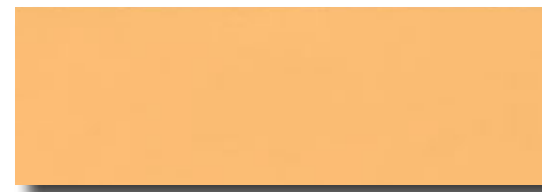
PT-33



PT-7



PT-48



PT-49



VCT-6



VCT-7



VCT-8



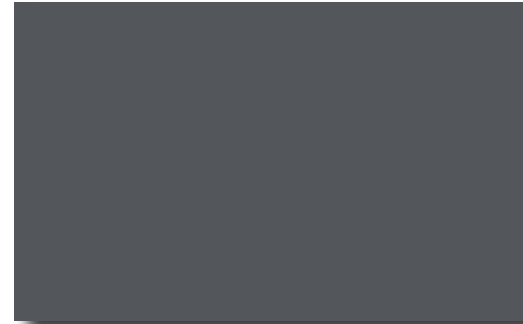
VCT-9



VCT-10



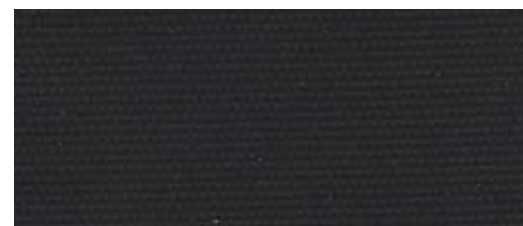
VCT-11



PT-117



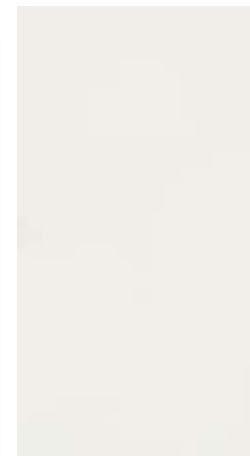
WS-5



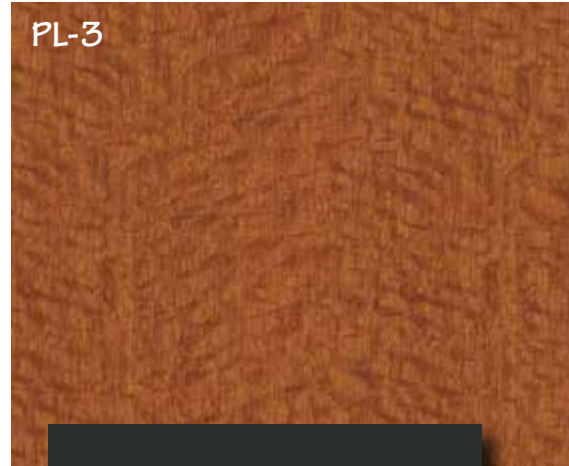
BSW-5



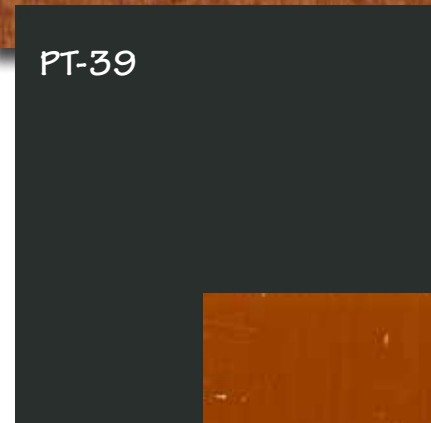
PL-26



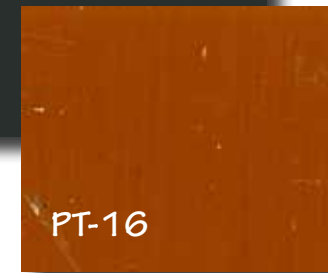
LCW-1



PL-3



PT-39



PT-16



RB-2



CG-3

THE UNIVERSITY OF TEXAS

**MD Anderson**  
~~Cancer Center~~

FACILITIES  
MANAGEMENT  
OFFICE OF

FACILITIES PLANNING,  
DESIGN AND  
CONSTRUCTION

INTERIOR FINISH STANDARDS  
FOR

7435 Fannin St.  
**SOUTH CAMPUS**  
**RESEARCH BUILDING 2**  
(SCRB2)

SHEET TITLE:

**SCRB2**  
**LABS**  
**RESEARCH**

LAST UPDATE:

**01/15/2014**

SHEET NO.:

**9** OF **18**

FILE NAME: ODGECBSCR2R1

PRINT

BACK TO  
T.O.C.

NEXT PAGE

# FINISH LEGEND

## DOORS/DOOR FRAMES

- PL-3 Formica  
 No.: 744, Lacewood Matte
- PT-16 ICI  
 Color: Cinnamon Stick  
 No.: M02-1275  
 "Lite" trim (when applicable)
- PT-39 ICI  
 Color: Forest Black,  
 Semi Gloss  
 No.: 578

## ARCHITECTURAL WOODWORK

- PL-16 Wilsonart  
 Color: Frosty White  
 No.: 1573-13

## WALLS

- PT-33 Benjamin Moore  
 Color: China White,  
 Semi Gloss

## FLOORS

- SHV-20 Armstrong Medintech  
 Color: Ixia Warm White  
 No.: 88476
- FAF-3 Stonhard  
 Stonclad UTS,  
 Medium Texture

## BASE

- SHV-20 Armstrong Medintech  
 Color: Ixia Warm White  
 No.: 88476

Important Disclaimer: Colors presented in this file are provided for general color information only. Due to many different monitor settings on individual computers and different light sources - these finishes may appear from actual color. Actual samples are available from the FPDC/FPS library located on the 8th floor of FHB or may be ordered directly from manufacturers.



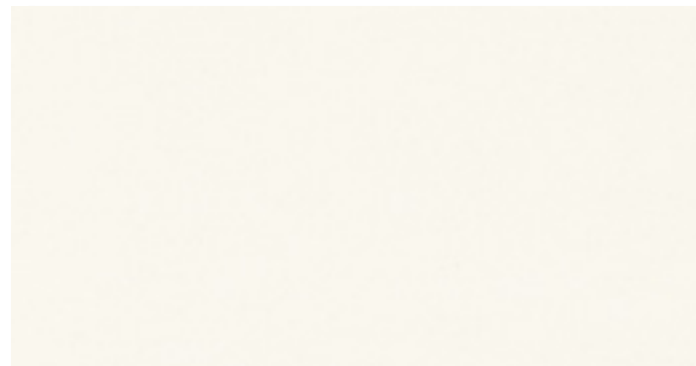
PL-3



PT-39



PT-16



PL-16



PT-33



SHV-20



FAF-30

THE UNIVERSITY OF TEXAS

**MDAnderson**  
~~Cancer Center~~

FACILITIES  
 MANAGEMENT  
 OFFICE OF

FACILITIES PLANNING,  
 DESIGN AND  
 CONSTRUCTION

INTERIOR FINISH STANDARDS  
 FOR

7435 Fannin St.  
**SOUTH CAMPUS**  
**RESEARCH BUILDING 2**  
 (SCRB2)

SHEET TITLE:

**SCRB2**  
**LAB SUPPORT AREAS**  
 (TISSUE CULTURE ROOMS,  
 CHEMICAL FUME HOOD ROOMS)

LAST UPDATE:

**01/15/2014**

SHEET NO.:

**10** OF **18**

FILE NAME: ODGECB5SCRB2R1

PRINT

BACK TO  
 T.O.C.

NEXT PAGE

# FINISH LEGEND

## CEILING

ACT-7 Celotex  
Color: Baroque

## DOORS/DOOR FACINGS

PL-3 Formica  
No.: 744, Lacewood Matte

PT-16 ICI  
Color: Cinnamon Stick  
No.: MO2-1275  
"Lite" trim (when applicable)

PT-39 ICI  
Color: Forest Black, Semi Gloss  
No.: #578

## ARCHITECTURAL WOODWORK

PL-3 Formica  
No.: 744, Lacewood Matte

## WALLS

PT-33 Benjamin Moore  
Color: China White, Semi Gloss

### Accent Wall Options:

PT-7 Benjamin Moore  
(Flr 1,4) Color: #712 Teal

PT-48 Benjamin Moore  
(Flr 2) Color: #276 Georgian Clay

PT-49 Benjamin Moore  
(Flr 3) Color: #477 Copper Hill

## FLOORS

Field Color:  
VCT-6 Mannington "Essentials"  
Color: Cool White  
No.: 141

### Accent VCT:

VCT-7 Mannington "Essentials"  
(Flr 1,4) Color: Aegean  
No.: 215

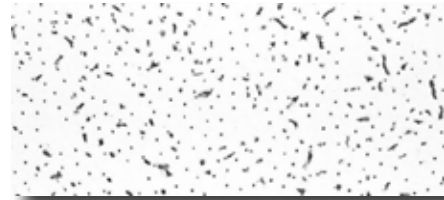
VCT-8 Mannington "Essentials"  
(Flr 2) Color: Brick  
No.: 288

VCT-10 Mannington "Essentials"  
(Flr 3) Color: Marigold  
No.: 253

## BASE

RB-2 Roppe "Pinnacle", 4" Cove  
Color: Brown Black  
No.: RP193

Important Disclaimer: Colors presented in this file are provided for general color information only. Due to many different monitor settings on individual computers and different light sources - these finishes may appear from actual color. Actual samples are available from the FPDC/FPS library located on the 8th floor of FHB or may be ordered directly from manufacturers.



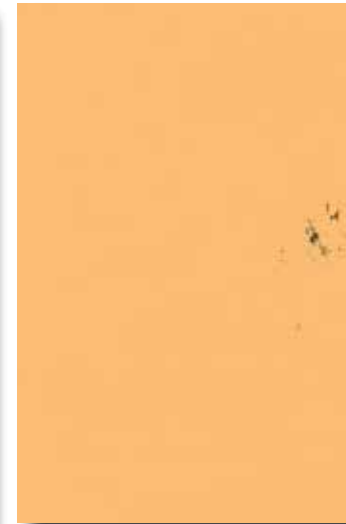
ACT-7



PT-33



PT-7



PT-48



PT-49



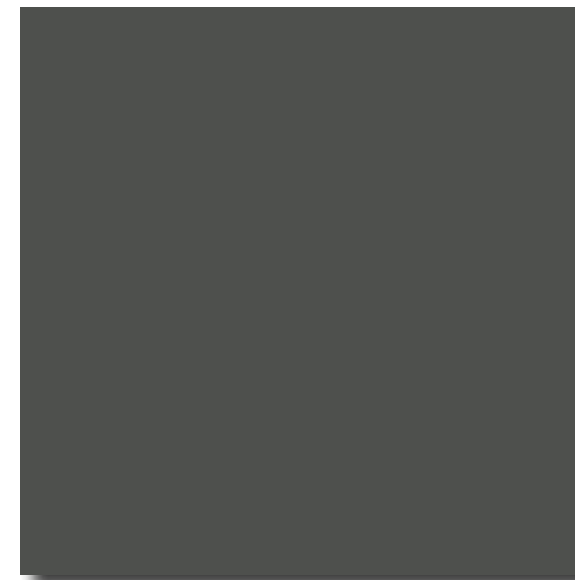
PL-3



PT-16



PT-39



RB-2



VCT-6



VCT-7



VCT-8



VCT-10

## FACILITIES MANAGEMENT OFFICE OF

FACILITIES PLANNING,  
DESIGN AND  
CONSTRUCTION

INTERIOR FINISH STANDARDS  
FOR

7435 Fannin St.  
**SOUTH CAMPUS**  
**RESEARCH BUILDING 2**  
(SCRB2)

SHEET TITLE:

**SCRB2**  
**LOBBY ELEVATOR**  
**FLRS. 2-4**

LAST UPDATE:

**01/15/2014**

SHEET NO.:

**11** OF **18**

FILE NAME: ODGECBSCR2R1

PRINT

BACK TO  
T.O.C.

NEXT PAGE

# FINISH LEGEND

## CEILING

ACT-7 Celotex  
Color: Baroque

## DOORS/DOOR FRAMES

PL-3 Formica  
No.: 744, Lacewood Matte

PT-16 ICI  
Color: Cinnamon Stick  
No.: MO2-1275  
"Lite" trim (when applicable)

PT-39 ICI  
Color: Forest Black, Semi Gloss  
No.: 578

## WALLS

PT-33 Benjamin Moore  
Color: China White, Semi Gloss

Accent Wall:  
PT-35 ICI  
Color: #952 Loden

Elevator Cab Upper Wall:  
PL-28 Wilsonart  
Color: Dove Morraine  
No.: 4640-60

Elevator Cab Lower Wall:  
PL-3 Formica  
Color: Lacewood Matte  
No.: 744-58

## FLOORS

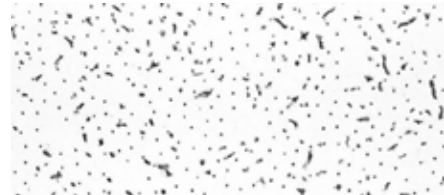
Field Color:  
TRZ-4 Southern Tile & Terrazzo  
Sample #10

Accent VCT:  
TRZ-5 Southern Tile & Terrazzo  
Sample #TS-407-4

## BASE

TRZ-4 Southern Tile & Terrazzo  
Sample #10

Important Disclaimer: Colors presented in this file are provided for general color information only. Due to many different monitor settings on individual computers and different light sources - these finishes may appear from actual color. Actual samples are available from the FPDC/FPS library located on the 8th floor of FHB or may be ordered directly from manufacturers.



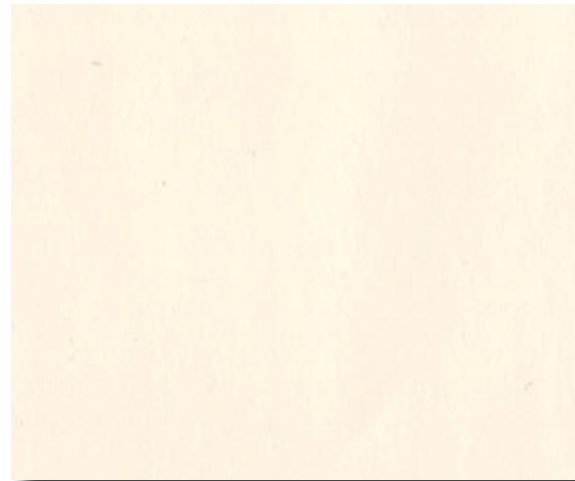
ACT-7



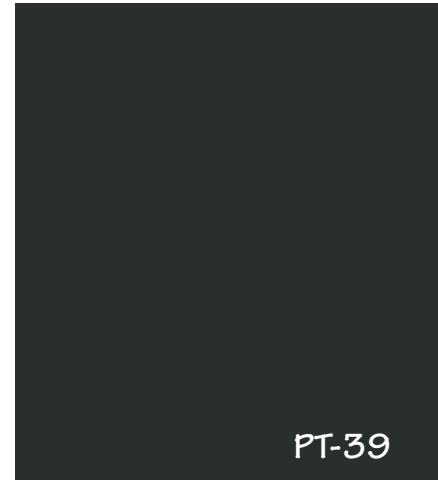
PT-16



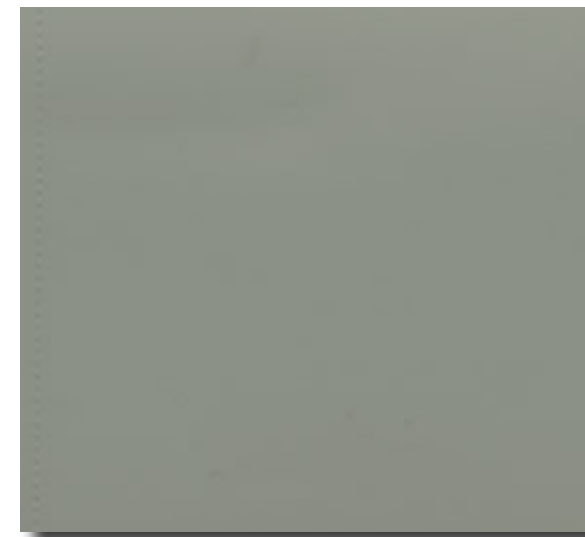
PL-28



PT-33



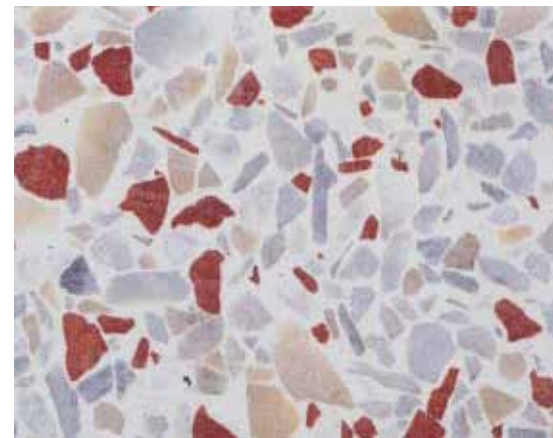
PT-39



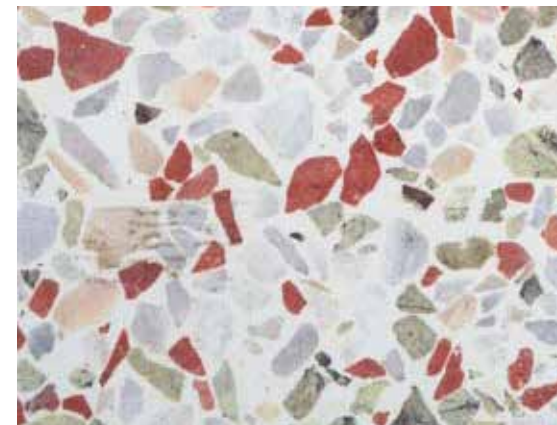
PT-35



PL-3



TRZ-5



TRZ-4

SHEET TITLE:

**SCRB2**  
**LOBBY**  
**FLR 1 PUBLIC**

LAST UPDATE:

**01/15/2014**

SHEET NO.:

**12** OF **18**

FILE NAME: ODGECBSCR2R1

PRINT

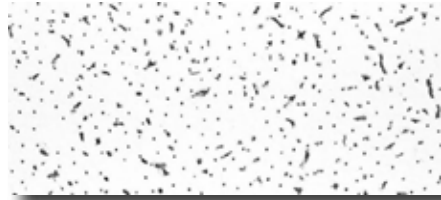
BACK TO  
T.O.C.

NEXT PAGE

# FINISH LEGEND

## CEILING

ACT-7 Celotex  
Color: Baroque



ACT-7

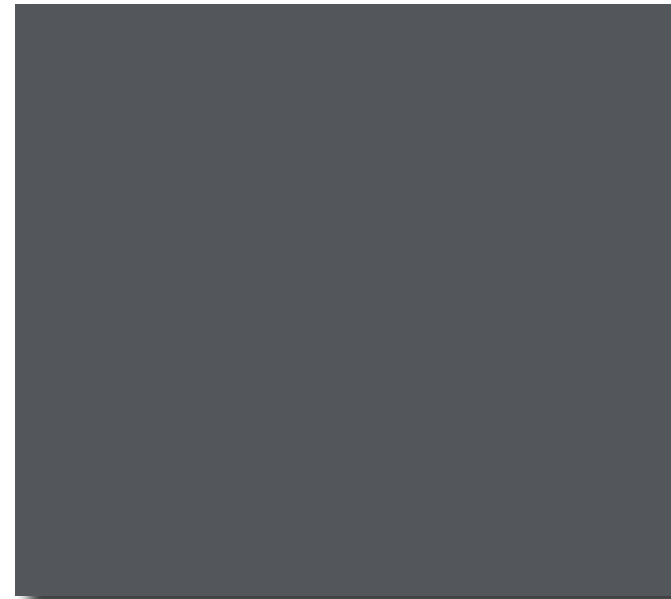
## WINDOW TREATMENT

WS-5 Solarfective  
Hexcel Fabric 5%  
No: XL5  
Color: Charcoal/Grey



WS-5

PT-117 Benjamin Moore  
Color: Deep Space  
No.: 2125-20  
(HemBar Paint)



PT-117

## DOORS/DOOR FRAMES

PL-3 Formica  
No.: 744, Lacewood Matte

PT-16 ICI  
Color: Cinnamon Stick  
No.: MO2-1275  
"Lite" trim (when applicable)

PT-39 ICI  
Color: Forest Black,  
Semi Gloss  
No.: #578



PT-33



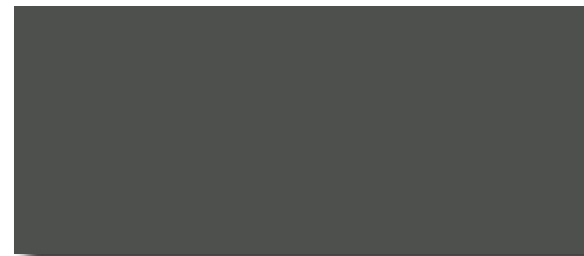
PT-39



PT-16

## WALLS

PT-33 Benjamin Moore  
Color: China White,  
Semi Gloss



RB-2

## FLOORS

CPB-27 Designweave  
Color: Palladian, Crete



CPB-27

## BASE

RB-2 Roppe "Pinnacle", 4" Coved  
Color: Brown Black  
No.: RP193



PL-3

Important Disclaimer: Colors presented in this file are provided for general color information only. Due to many different monitor settings on individual computers and different light sources - these finishes may appear from actual color. Actual samples are available from the FPDC/FPS library located on the 8th floor of FHB or may be ordered directly from manufacturers.

SHEET TITLE:

**SCRB2**  
**OFFICE SPACE**  
**(FACULTY)**

LAST UPDATE:

**01/15/2014**

SHEET NO.:

**13** OF 18

FILE NAME: ODGECB5SCRB2R1

PRINT

BACK TO  
T.O.C.

NEXT PAGE

# FINISH LEGEND

## CEILING

ACT-7 Celotex  
Color: Baroque

## WINDOW TREATMENT

WS-5 Solarfective  
Hexcel Fabric 5%  
No: XL5  
Color: Charcoal/Grey

PT-117 Benjamin Moore  
Color: Deep Space  
No.: 2125-20  
(HemBar Paint)

## DOORS/DOOR FRAMES

PL-3 Formica  
No.: 744, Lacewood Matte

PT-16 ICI  
Color: Cinnamon Stick  
No.: MO2-1275  
"Lite" trim (when applicable)

PT-39 ICI  
Color: Forest Black,  
Semi Gloss  
No.: 578

## ARCHITECTURAL WOODWORK

PL-16 Wilsonart  
Color: Frosty White  
No.: 1573-13

## WALLS

PT-33 Benjamin Moore  
Color: China White,  
Semi Gloss

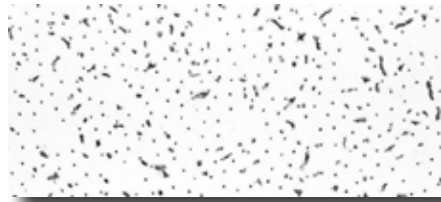
## FLOORS

CPB-27 Designweave  
Color: Palladian, Crete

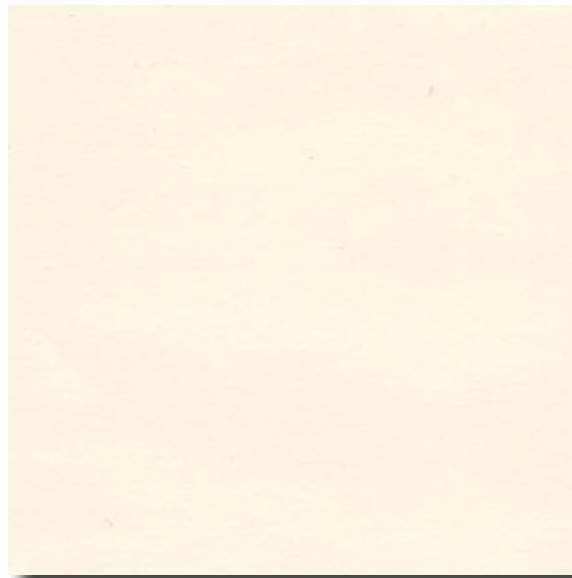
## BASE

RB-2 Roppe "Pinnacle", 4" Coved  
Color: Brown Black  
No.: RP193

Important Disclaimer: Colors presented in this file are provided for general color information only. Due to many different monitor settings on individual computers and different light sources - these finishes may appear from actual color. Actual samples are available from the FPDC/FPS library located on the 8th floor of FHB or may be ordered directly from manufacturers.



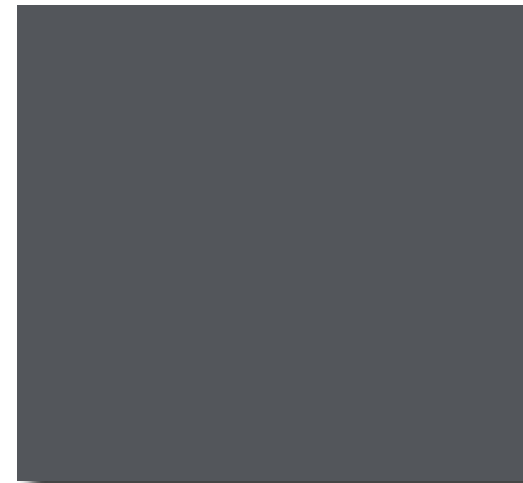
ACT-7



PT-33



WS-5



PT-117



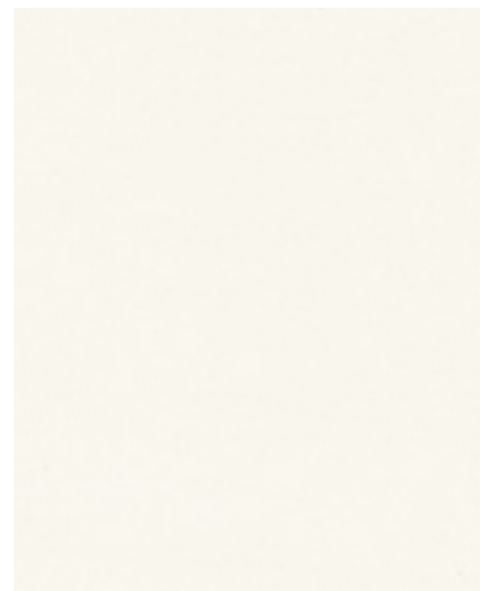
PT-16



RB-2



PT-39



PL-16



CPB-27



PL-3

SHEET TITLE:

**SCRB2**  
**OFFICE SPACE**  
**(OTHER)**

LAST UPDATE:

**01/15/2014**

SHEET NO.:

**14** OF **18**

FILE NAME: ODGECB5SCRB2R1

PRINT

BACK TO  
T.O.C.

NEXT PAGE

# FINISH LEGEND

## CEILING

ACT-7 Celotex  
Color: Baroque

## DOORS/DOOR FRAMES

PL-3 Formica  
No.: 744, Lacewood Matte

PT-16 ICI  
Color: Cinnamon Stick  
No.: M02-1275  
"Lite" trim (when applicable)

PT-39 ICI  
Color: Forest Black,  
Semi Gloss  
No.: #578

## ARCHITECTURAL WOODWORK

PL-16 Wilsonart  
Color: Frosty White  
No.: 1573-13

## WALLS

PT-33 Benjamin Moore  
Color: China White,  
Semi Gloss

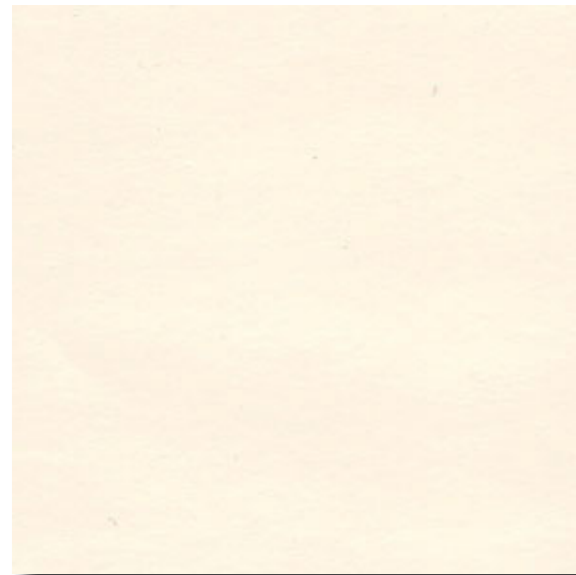
## FLOORS

VCT-6 Mannington Essentials  
Color: Cool White #141

## BASE

RB-2 Roppe "Pinnacle", 4" Coved  
Color: Brown Black  
No.: RP193

Important Disclaimer: Colors presented in this file are provided for general color information only. Due to many different monitor settings on individual computers and different light sources - these finishes may appear from actual color. Actual samples are available from the FPDC/FPS library located on the 8th floor of FHB or may be ordered directly from manufacturers.



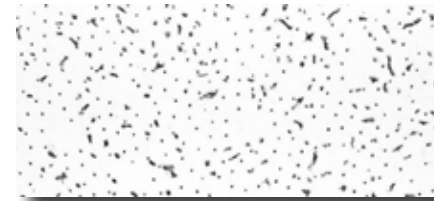
PT-33



RB-2



VCT-6



ACT-7



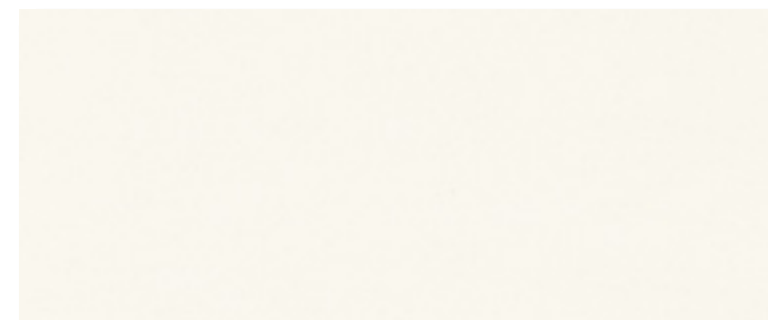
PT-39



PT-16



PL-3



PL-16

THE UNIVERSITY OF TEXAS

**MDAnderson**  
~~Cancer Center~~

FACILITIES  
MANAGEMENT  
OFFICE OF

FACILITIES PLANNING,  
DESIGN AND  
CONSTRUCTION

INTERIOR FINISH STANDARDS  
FOR

7435 Fannin St.  
**SOUTH CAMPUS**  
**RESEARCH BUILDING 2**  
(SCRB2)

SHEET TITLE:

**SCRB2**  
**STORAGE ROOM**

LAST UPDATE:

**01/15/2014**

SHEET NO.:

**15** OF **18**

FILE NAME: ODGECBSCR2R1

PRINT

BACK TO  
T.O.C.

NEXT PAGE

# FINISH LEGEND

## CEILING

ACT-7 Celotex  
Color: Baroque

## DOORS/DOOR FRAMES

PL-3 Formica  
No.: 744, Lacewood Matte

"Lite" trim (when applicable)

PT-16 ICI  
Color: Cinnamon Stick  
No.: MO2-1275

Toilet Partitions:

MTC-4 Hadrian  
523 Celadon

PT-39 ICI  
Color: Forest Black,  
Semi Gloss  
No.: #578

## ARCHITECTURAL WOODWORK

Sink Counter:

SSM-38 Dupont  
Corian  
Color: Sequoia

## WALLS

Field:

TLW-3 Dal Tile  
D145 Majorca  
6"X6"

TLW-10 American Olean  
"Bright & Matte"  
Color: Sage #A003

## FLOORS

TLF-15 Crossville Ceramic Tile  
Color: A658 Fawn

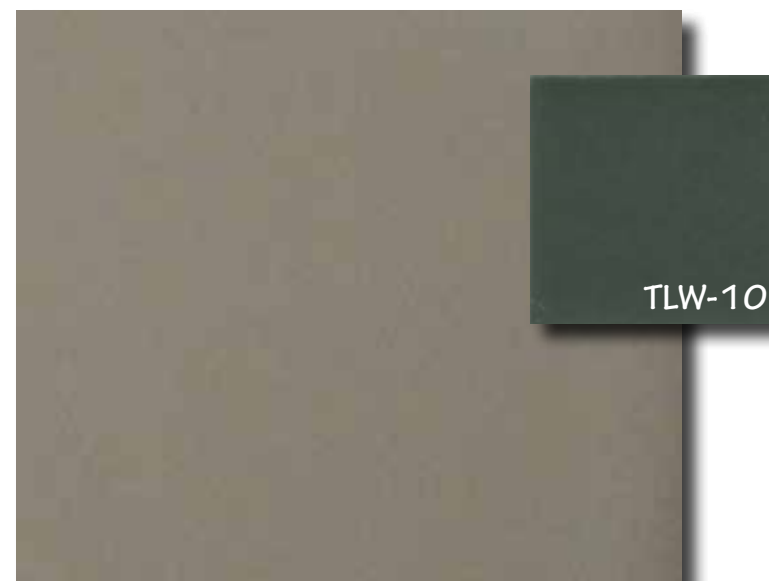
## BASE

TLF-15 Crossville Ceramic Tile  
Color: A658 Fawn

Important Disclaimer: Colors presented in this file are provided for general color information only. Due to many different monitor settings on individual computers and different light sources - these finishes may appear from actual color. Actual samples are available from the FPDC/FPS library located on the 8th floor of FHB or may be ordered directly from manufacturers.



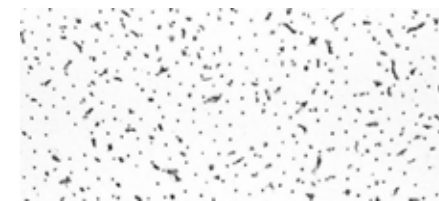
SSM-38



TLW-10



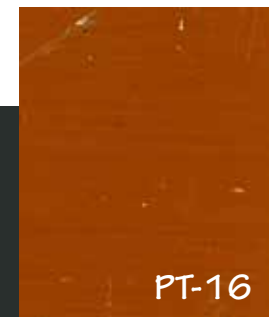
TLF-15



ACT-7



PT-39



PT-16



PL-3



MTC-4

THE UNIVERSITY OF TEXAS

**MD Anderson**  
~~Cancer Center~~

FACILITIES  
MANAGEMENT  
OFFICE OF

FACILITIES PLANNING,  
DESIGN AND  
CONSTRUCTION

INTERIOR FINISH STANDARDS  
FOR

7435 Fannin St.  
**SOUTH CAMPUS**  
**RESEARCH BUILDING 2**  
(SCRB2)

SHEET TITLE:

**SCRB2**  
**TOILETS**  
**FLR 1**

LAST UPDATE:

**01/15/2014**

SHEET NO.:

**16** OF **18**

FILE NAME: ODGECBSCR2R1

PRINT

BACK TO  
T.O.C.

NEXT PAGE



# FINISH LEGEND

## CEILING

ACT-7 Celotex  
Color: Baroque

## DOORS/DOOR FRAMES

PL-3 Formica  
No.: 744, Lacewood Matte

"Lite" trim (when applicable)

PT-16 ICI  
Color: Cinnamon Stick  
No.: MO2-1275

Toilet Partitions:

MTC-2 Hadrian  
520 Dark Green

PT-39 ICI  
Color: Forest Black, Semi Gloss  
No.: #578

## ARCHITECTURAL WOODWORK

Sink Counter:

SSM-9 Dupont  
Corian  
Color: Evergreen

## WALLS

Field:  
TLW-3 Dal Tile  
D145 Majorca  
6"X6"

TLW-4 Dal Tile  
K162 Teal

## FLOORS

TLF-11 DalTile Porcelato  
Color: CD-58 Bianco Sardo  
12X12 Unpolished

## BASE

TLF-12 Crossville Ceramic Tile  
Color: A658 Fawn  
(Matches Bianco Sardo CD-58)

Important Disclaimer: Colors presented in this file are provided for general color information only. Due to many different monitor settings on individual computers and different light sources - these finishes may appear from actual color. Actual samples are available from the FPDC/FPS library located on the 8th floor of FHB or may be ordered directly from manufacturers.



SSM-9



TLW-3



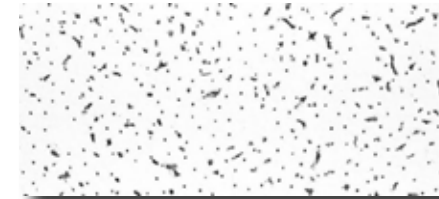
TLW-4



TLF-11



TLF-12



ACT-7



PT-39



PT-16



PL-3



MTC-2

## FACILITIES MANAGEMENT OFFICE OF

FACILITIES PLANNING,  
DESIGN AND  
CONSTRUCTION

INTERIOR FINISH STANDARDS  
FOR

7435 Fannin St.  
**SOUTH CAMPUS**  
**RESEARCH BUILDING 2**  
(SCRB2)

SHEET TITLE:

**SCRB2**  
**TOILETS (TYPICAL)**  
**FLRS 2-4**

LAST UPDATE:

**01/15/2014**

SHEET NO.:

**17** OF **18**

FILE NAME: ODGECBSCR2R1

PRINT

BACK TO  
T.O.C.

NEXT PAGE

<b>DOCUMENT REVISION HISTORY</b>			
<b>Issue</b>	<b>Date</b>	<b>Revision Description</b>	<b>Revisor</b>
Rev. 0	10/23/12	Initial Adoption of South Campus Research Building 2 Interior Finishes.	RP
Rev. 1	01/15/2014	Revised finish scedule, departmental name change	JKT

THE UNIVERSITY OF TEXAS  
**MD Anderson**  
~~Cancer Center~~

---

**FACILITIES  
MANAGEMENT  
OFFICE OF**

**FACILITIES PLANNING,  
DESIGN AND  
CONSTRUCTION**

---

**INTERIOR FINISH STANDARDS  
FOR**

7435 Fannin St.  
**SOUTH CAMPUS  
RESEARCH BUILDING 2  
(SCRB2)**

---

SHEET TITLE:

**SCRB2  
DOCUMENT REVISION  
HISTORY**

---

LAST UPDATE:

**01/15/2014**

---

SHEET NO.:

**18**      OF 18

FILE NAME: ODGECB5SCRB2R1