

TABLE OF CONTENTS

SHEET:

- 1 - TABLE OF CONTENTS
- 2 - FINISH SCHEDULE 1 OF 3
- 3 - FINISH SCHEDULE 2 OF 3
- 4 - FINISH SCHEDULE 3 OF 3
- 5 - CONFERENCE FLR 1
- 6 - CONFERENCE (TYPICAL)
- 7 - CORRIDOR (FLRS 1-4)
- 8 - LABS (RESEARCH)
- 9 - LAB SUPPORT AREAS
- 10 - LOBBY (ELEVATOR FLRS 2-4)
- 11 - LOBBY (FLR 1 - PUBLIC)
- 12 - OFFICE SPACE (FACULTY)
- 13 - OFFICE SPACE (OTHER)
- 14 - SHOWER ROOMS
- 15 - STORAGE ROOM
- 16 - TOILETS (FLR 1)
- 17 - TOILETS (TYPICAL - FLRS 2-4)
- 18 - DOCUMENTATION REVISION HISTORY

Important Disclaimer: Colors presented in this file are provided for general color information only. Due to many different monitor settings on individual computers and different light sources - these finishes may appear from actual color. Actual samples are available from the FPDC/FPS library located on the 8th floor of FHB or may be ordered directly from manufacturers.



SOUTH CAMPUS RESEARCH BUILDING 1

THE UNIVERSITY OF TEXAS

**MDAnderson
Cancer Center**

FACILITIES MANAGEMENT OFFICE OF

FACILITIES PLANNING,
DESIGN AND
CONSTRUCTION

INTERIOR FINISH STANDARDS
FOR

7455 Fannin St.
**SOUTH CAMPUS
RESEARCH BUILDING 1**
(SCRB1)

SHEET TITLE:

SCRB 1 TABLE OF CONTENTS

LAST UPDATE:

01/15/2014

SHEET NO.:

1 OF 18

PRINT

BACK TO
T.O.C.

NEXT PAGE

FINISH LEGEND

South Campus Research Bldg 1 (SCRB1)

7455 Fannin
Updated: 03/01/2012 (KMB)

This schedule is intended to convey the general MDACC "standard" products used in the indicated room types to assist with the **Design Development phase only** of renovation or new construction projects. Finish legends and room finish schedules for construction documents **MUST** be reviewed and approved by the MDACC Planner/Designer assigned to the project. All Planner/Designers are responsible for verifying the information herein for accuracy. Contact Facilities Planning, Design and Construction/Facilities Planning Services (FPS) at ext. 2-2207 to clarify "special" finishes and applications.

Room Type	Flooring	Base	Walls	Wallguards	Doors	Door Frame	Ceiling	Architectural Woodwork	Trim	Window Treatment
Conference <i>Flr 1 Only</i>	<p>CPT-34 Interface Carpet Tile Nature Trails #472273 04/2011 Changed Yarn System New # 176614</p> <p>CPT-35 Interface "Adaptations" 50 cm x 50 cm Carpet Tile Custom Color #472277 04/2011 Changed Yarn System New #176615</p>	<p>RB-2 Roppe "Pinnacle" Brown Black # RP193 4" covered base</p>	<p>PT-33 Benjamin Moore "China White" Semi Gloss</p> <p>PT-35 ICI Paints #952 Loden</p>	N/A	<p>PL-3 Formica "Lacewood Matte" # 744</p> <p><i>"Lite" trim(when applicable):</i> PT-16 ICI "Cinnamon Stick" #2Y031A #M02-1275</p>	<p>PT-39 ICI Forest Black # 578 Semi Gloss</p>	<p>ACT-7 Celotex "Baroque"</p>	N/A	N/A	
Conference <i>Typical</i>	<p>CPB-27 Designweave "Palladian" Crete <i>Discontinued</i></p>	<p>RB-2 Roppe "Pinnacle" Brown Black # RP193 4" covered base</p>	<p>PT-33 Benjamin Moore "China White" Semi Gloss</p>	N/A	<p>PL-3 Formica "Lacewood Matte" # 744</p> <p><i>"Lite" trim(when applicable):</i> PT-16 ICI "Cinnamon Stick" #2Y031A #M02-1275</p>	<p>PT-39 ICI Forest Black # 578 Semi Gloss</p>	<p>ACT-7 Celotex "Baroque"</p>	<p>PL-3 Formica "Lacewood Matte" #744</p>	N/A	<p>WS-5 Solarfective Hexcel Fabric 5% #XL5 Charcoal/Grey <i>Hem Bar paint:</i> PT-117 Benj Moore #2125-20 "Deep Space" BWS-5 Blackout Shade: Black</p>
Corridors <i>Flrs 1-4</i>	<p><i>Field Color:</i> VCT-6 Mannington "Essentials" Cool White # 141</p> <p><i>Accent VCT</i> ALL Mannington "Essentials" VCT-7 Aegean #215 Flr 1,4 VCT-8 Brick # 288 Flr 2 VCT-10 Marigold #253Flr 3</p> <p><i>First Aid Designation</i> VCT-11 Armstrong Imperial Texture Std Excelon Cherry Red #51816</p>	<p>RB-2 Roppe "Pinnacle" Brown Black # RP193 4" covered base</p>	<p>PT-33 Benjamin Moore "China White" Semi Gloss</p>	<p>CG-3 Acrovyn Mission White # 933</p>	<p>PL-3 Formica "Lacewood Matte" # 744</p> <p><i>"Lite" trim(when applicable):</i> PT-16 ICI "Cinnamon Stick" #2Y031A #M02-1275</p>	<p>PT-39 ICI Forest Black # 578 Semi Gloss</p>	<p>ACT-7 Celotex "Baroque"</p>	<p>PL-3 Formica "Lacewood Matte" #744</p>	N/A	N/A
Labs <i>Research</i>	<p><i>Field Color:</i> VCT-6 Mannington "Essentials" Cool White # 141</p> <p><i>Accent Options if Applicable</i> ALL Mannington "Essentials" VCT-7 Aegean #215 Flr 1,4 VCT-8 Brick # 288 Flr 2 VCT-9 Sunflower # 263 (Equip.zone in labs) VCT- 10 Marigold #253 Flr 3</p> <p><i>First Aid Designation</i> VCT-11 Armstrong Imperial Texture Std Excelon Cherry Red #51816</p> <p>Important Disclaimer: Colors presented in this file are provided for general color information only. Due to many different monitor settings on individual computers and different light sources - these finishes may appear from actual color. Actual samples are available from the FPDC/FPS library located on the 8th floor of FHB or may be ordered directly from manufacturers.</p>	<p>RB-2 Roppe "Pinnacle" Brown Black # RP193 4" covered base</p>	<p>PT-33 Benjamin Moore "China White" Semi Gloss</p> <p><i>Accent Wall Options</i> PT-7 (Flr. 1,4) B. Moore # 712 Teal PT-48 (Flr. 2) ICI #276 Georgian Clay PT-49 (Flr. 3) ICI # 477 Copper Hill</p>	<p>CG-3 Acrovyn Mission White # 933 <i>Verify product use in building</i></p>	<p>PL-3 Formica "Lacewood Matte" # 744</p> <p><i>"Lite" trim(when applicable):</i> PT-16 ICI "Cinnamon Stick" #2Y031A #M02-1275</p>	<p>PT-39 ICI Forest Black # 578 Semi Gloss</p>	<p>ACT-7 Celotex "Baroque"</p>	<p><i>Counter top</i> PL-26 Trespa "Top Lab" TO-300</p> <p><i>Casework</i> LCW-1 Fisher-Hamilton Eggshell EL # 1377</p>	N/A	<p>WS-5 Solarfective Hexcel Fabric 5% #XL5 Charcoal/Grey <i>Hem Bar paint:</i> PT-117 Benj Moore #2125-20 "Deep Space" BWS-5 Blackout Shade: Black</p>

FACILITIES
MANAGEMENT
OFFICE OF
FACILITIES PLANNING,
DESIGN AND
CONSTRUCTION

INTERIOR FINISH STANDARDS
FOR

7455 Fannin St.
**SOUTH CAMPUS
RESEARCH BUILDING 1**
(SCRB1)

SHEET TITLE:

**SCRB 1
FINISH SCHEDULE
1 OF 3**

LAST UPDATE:

01/15/2014

SHEET NO.:

2 OF **18**

PRINT

BACK TO
T.O.C.

NEXT PAGE

FINISH LEGEND

South Campus Research Bldg 1 (SCRB1)

7455 Fannin

Updated: 03/01/2012 (KMB)

This schedule is intended to convey the general MDACC "standard" products used in the indicated room types to assist with the **Design Development phase only** of renovation or new construction projects. Finish legends and room finish schedules for construction documents **MUST** be reviewed and approved by the MDACC Planner/Designer assigned to the project. All Planner/Designers are responsible for verifying the information herein for accuracy. Contact Facilities Planning, Design and Construction/Facilities Planning Services (FPS) at ext. 2-2207 to clarify "special" finishes and applications.

Room Type	Flooring	Base	Walls	Wallguards	Doors	Door Frame	Ceiling	Architectural Woodwork	Trim	Window Treatment
Lab Support Areas (Tissue Culture Rooms, Chemical Fume Hood Rooms)	SHV-20 Armstrong Medintech #86476 #88476 Ixia Warm White	SHV-20 Armstrong Medintech #86476 #88476 Ixia Warm White integral covered base	PT-33 Benjamin Moore China White Semi Gloss		PL-3 Formica "Lacewood Matte" # 744 <i>"Lite" trim(when applicable):</i> PT-16 ICI "Cinnamon Stick" #2Y031A #M02-1275	PT-39 ICI Forest Black # 578 Semi Gloss		PL-16 Wilsonart Frosty White #1573-13		
Lobby Elevator Flrs. 2-4	<i>Field Color:</i> VCT-6 Mannington "Essentials" Cool White # 141 <i>Accent Options if Applicable</i> ALL Mannington "Essentials" VCT-7 Aegean #215 Flr 1,4 VCT-8 Brick # 288 Flr 2 VCT-10 Marigold #253 Flr 3	RB-2 Roppe "Pinnacle" Brown Black # RP193 4" covered base	PT-33 Benjamin Moore "China White" Semi Gloss <i>Accent Wall Options</i> PT-7 (Flr. 1,4) B. Moore # 712 Teal PT-48 (Flr. 2) ICI #276 Georgian Clay PT-49 (Flr. 3) ICI # 477 Copper Hill	N/A	PL-3 Formica "Lacewood Matte" # 744 <i>"Lite" trim(when applicable):</i> PT-16 ICI "Cinnamon Stick" #2Y031A #M02-1275	PT-39 ICI Forest Black # 578 Semi Gloss	ACT-7 Celotex "Baroque"	PL-3 Formica "Lacewood Matte" #744		
Lobby Flr 1 Public	<i>Field</i> TRZ-4 Southern Tile & Terrazo Sample #10 <i>Accent</i> TRZ-5 Southern Tile & terrazo Sample # TS-407-4	Terrazo Base to match floor TRZ-4	PT-33 Benjamin Moore "China White" Semi Gloss <i>Accent Wall</i> PT-35 ICI # 952 Loden <i>Elevator Cab Upper Wall:</i> PL-28 Wilsonart # 4640-60 Dove Morraine <i>Elevator Cab Lower Wall:</i> PL-3 Formica # 744-58 Lacewood Matte		PL-3 Formica "Lacewood Matte" # 744 <i>"Lite" trim(when applicable):</i> PT-16 ICI "Cinnamon Stick" #2Y031A #M02-1275	PT-39 ICI Forest Black # 578 Semi Gloss	ACT-7 Celotex "Baroque"	<i>Telephone Alcove</i> VWC-13 Carnegie Xorel #6423 Strie Color: 551 (Discontinued) SSM-38 DuPont Corian Sequoia		
Office Space (Faculty)	CPB-27 Designweave "Palladian" Crete <i>Discontinued</i>	RB-2 Roppe "Pinnacle" Brown Black # RP193 4" covered base	PT-33 Benjamin Moore "China White"	N/A	PL-3 Formica "Lacewood Matte" # 744 <i>"Lite" trim(when applicable):</i> PT-16 ICI "Cinnamon Stick" #2Y031A #M02-1275	PT-39 ICI Forest Black # 578 Semi Gloss	ACT-7 Celotex "Baroque"		N/A	WS-5 Solarfective Hexcel Fabric 5% #XL5 Charcoal/Grey <i>Hem Bar paint:</i> PT-117 Benj Moore #2125-20 "Deep Space"

Important Disclaimer: Colors presented in this file are provided for general color information only. Due to many different monitor settings on individual computers and different light sources - these finishes may appear from actual color. Actual samples are available from the FPDC/FPS library located on the 8th floor of FHB or may be ordered directly from manufacturers.

FACILITIES MANAGEMENT OFFICE OF FACILITIES PLANNING, DESIGN AND CONSTRUCTION

INTERIOR FINISH STANDARDS FOR

7455 Fannin St.
SOUTH CAMPUS RESEARCH BUILDING 1 (SCRB1)

SHEET TITLE:

SCRB 1 FINISH SCHEDULE 2 OF 3

LAST UPDATE:

01/15/2014

SHEET NO.:

3 OF **18**

PRINT

BACK TO T.O.C.

NEXT PAGE

FINISH LEGEND

South Campus Research Bldg 1 (SCRB1)

7455 Fannin
Updated: 03/01/2012 (KMB)

This schedule is intended to convey the general MDACC "standard" products used in the indicated room types to assist with the **Design Development phase only** of renovation or new construction projects. Finish legends and room finish schedules for construction documents **MUST** be reviewed and approved by the MDACC Planner/Designer assigned to the project. All Planner/Designers are responsible for verifying the information herein for accuracy. Contact Facilities Planning, Design and Construction/Facilities Planning Services (FPS) at ext. 2-2207 to clarify "special" finishes and applications.

Room Type	Flooring	Base	Walls	Wallguards	Doors	Door Frame	Ceiling	Architectural Woodwork	Trim	Window Treatment
Office Space (Other)	CPB-27 Designweave "Palladian" Crete Discontinued	RB-2 Roppe "Pinnacle" Brown Black # RP193 4" covered base	PT-33 Benjamin Moore "China White"	N/A	PL-3 Formica "Lacewood Matte" # 744 "Lite" trim(when applicable): PT-16 ICI "Cinnamon Stick" #2Y031A #M02-1275	PT-39 ICI Forest Black # 578 Semi Gloss	ACT-7 Celotex "Baroque"	PL-16 Wilsonart Frosty White #1573-13	N/A	WS-5 Solarfective Hexcel Fabric 5% #XL5 Charcoal/Grey Hem Bar paint: PT-117 Benj Moore #2125-20 "Deep Space"
Shower Rooms	SHV-12 Forbo Traction Step Slip Retardant Non-Studded Color 7512	SHV-12 Forbo Traction Step Slip Retardant Non-Studded Color 7512	SSM-37 Corian Glacier White		PL-3 Formica "Lacewood Matte" # 744 "Lite" trim(when applicable): PT-16 ICI "Cinnamon Stick" #2Y031A #M02-1275	PT-39 ICI Forest Black # 578 Semi Gloss				
Storage Room	VCT-6 Mannington Essentials Cool White #141	RB-2 Roppe "Pinnacle" Brown Black # RP193 4" covered base	PT-33 Benjamin Moore "China White"	N/A	PL-3 Formica "Lacewood Matte" # 744 "Lite" trim(when applicable): PT-16 ICI "Cinnamon Stick" #2Y031A #M02-1275	PT-39 ICI Forest Black # 578 Semi Gloss	ACT-7 Celotex "Baroque"	PL-16 Wilsonart Frosty White #1573-13	N/A	N/A
Toilets Flr 1	TLF-15 Crossville Ceramic Tile A658 Fawn	TLF-15 Crossville Ceramic Tile A658 Fawn	TLW-3 (Field) Dal Tile D145 Majorca 6"x6" TLW-10 American Olean "Bright & Matte" Sage # A003	N/A	PL-3 Formica "Lacewood Matte" # 744 "Lite" trim(when applicable): PT-16 ICI "Cinnamon Stick" #2Y031A #M02-1275 Toilet Partitions: MTC-4 Hadrian 523 Celadon	PT-39 ICI Forest Black # 578 Semi Gloss	ACT-7 Celotex "Baroque"	Sink Counter: SSM-38 Dupont "Corian" Sequoia	N/A	N/A
Toilets Typical Flrs 2-4	TLF-11 Dal Tile Porcelain CD-58 Bianco Sardo 12x12 Unpolished	TLF-12 Porcelain Covered Tile Base Style: Porcelain #S3689T (Matches Bianco Sardo CD-58) Size: 8"w x 6"h Finish: Polished Grout: Laticrete #27 Hemp		N/A	PL-3 Formica "Lacewood Matte" # 744 "Lite" trim(when applicable): PT-16 ICI "Cinnamon Stick" #2Y031A #M02-1275 Toilet Partitions: MTC-2 Hadrian 520 Dark Green	PT-39 ICI Forest Black # 578 Semi Gloss	ACT-7 Celotex "Baroque"	Sink Counter: SSM -9 Dupont "Corian" Evergreen	N/A	N/A

Important Disclaimer: Colors presented in this file are provided for general color information only. Due to many different monitor settings on individual computers and different light sources - these finishes may appear from actual color. Actual samples are available from the FPDC/FPS library located on the 8th floor of FHB or may be ordered directly from manufacturers.

FACILITIES MANAGEMENT OFFICE OF FACILITIES PLANNING, DESIGN AND CONSTRUCTION

INTERIOR FINISH STANDARDS FOR

7455 Fannin St.
**SOUTH CAMPUS
RESEARCH BUILDING 1**
(SCRB1)

SHEET TITLE:

SCRB 1 FINISH SCHEDULE 3 OF 3

LAST UPDATE:

01/15/2014

SHEET NO.:

4 OF 18

PRINT

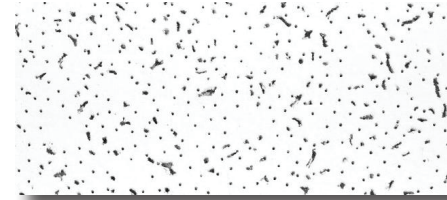
BACK TO
T.O.C.

NEXT PAGE

FINISH LEGEND

CEILING

ACT-7 Celotex
Color: Baroque



ACT-7

DOORS/DOOR FRAMES

PL-3 Formica
No.: 744, Lacewood Matte



PT-33

PT-16 ICI
Color: Cinnamon Stick
No.: M02-1275
"Lite" trim
(when applicable)

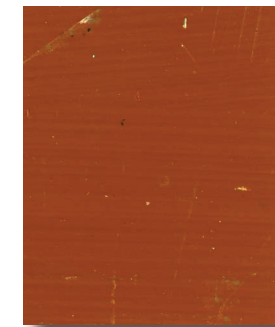


PT-35

PT-39 ICI
Color: Forest Black,
Semi Gloss
No.: #578



PT-39



PT-16

WALLS

PT-33 Benjamin Moore
Color: China White,
Semi Gloss



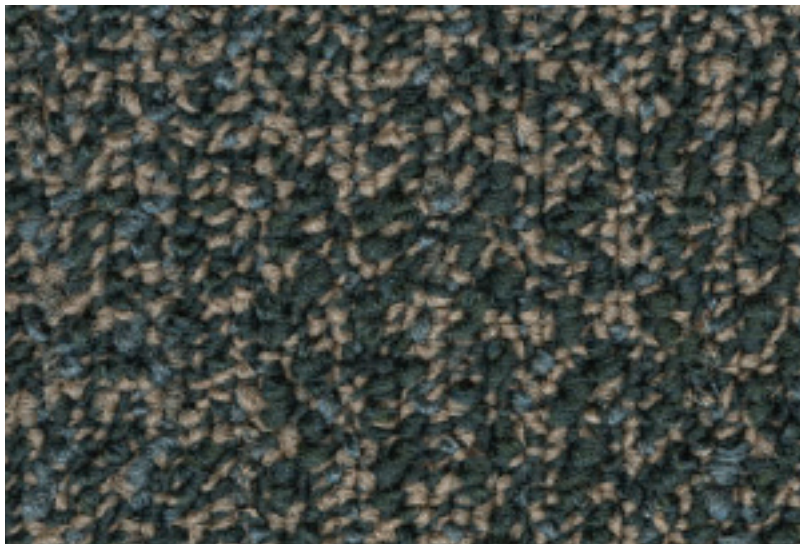
PT-35 ICI Paints
Color: #952 Loden



PL-3

FLOORS

CPT-34 Interface
"Nature Trails"
No.: 176614



CPT-34

CPT-35 Interface,
"Adaptations"
50cm X 50cm Tile
No.: 176615



CPT-35

BASE

RB-2 Roppe "Pinnacle", 4" Coved
Color: Brown Black
No.: RP193



RB-2

SHEET TITLE:

SCRB 1
CONFERENCE
FLR 1 ONLY

LAST UPDATE:

01/15/2014

SHEET NO.:

5 OF **18**

Important Disclaimer: Colors presented in this file are provided for general color information only. Due to many different monitor settings on individual computers and different light sources - these finishes may appear from actual color. Actual samples are available from the FPDC/FPS library located on the 8th floor of FHB or may be ordered directly from manufacturers.

PRINT

BACK TO
T.O.C.

NEXT PAGE

FINISH LEGEND

CEILING

ACT-7 Celotex
Color: Baroque

WINDOW TREATMENT

WS-5 Solarfective
Hexcel Fabric 5%
No.: XL5
Color: Charcoal/Grey

PT-117 Benjamin Moore
Color: Deep Space
No.: 2125-20
(Hem Bar Paint)

BWS-5 Blackout Shade
Color: Black

DOORS/DOOR FRAMES

PL-3 Formica
No.: 744, Lacewood Matte

PT-16 ICI
Color: Cinnamon Stick
No.: M02-1275
"Lite" trim (when applicable)

PT-39 ICI
Color: Forest Black, Semi Gloss
No.: #578

ARCHITECTURAL WOODWORK

PL-3 Formica
No.: 744, Lacewood Matte

WALLS

PT-33 Benjamin Moore
Color: China White, Semi Gloss

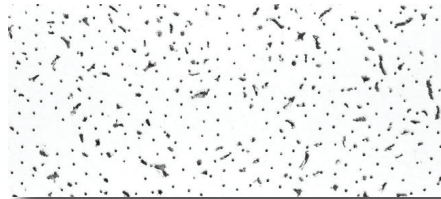
FLOORS

CPB-27 Designweave
Color: Palladian, Crete

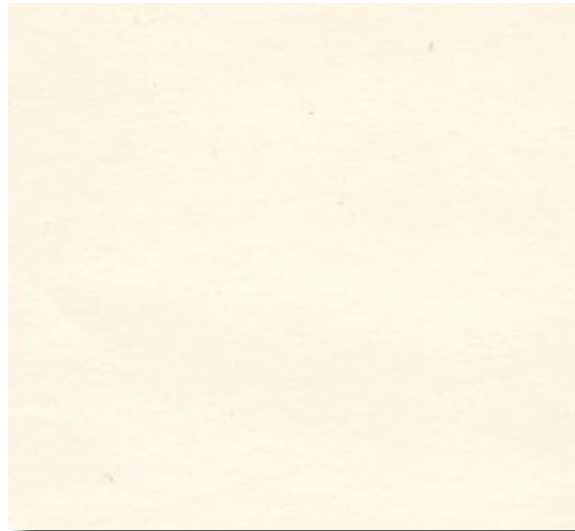
BASE

RB-2 Roppe "Pinnacle", 4" Coved
Color: Brown Black
No.: RP193

Important Disclaimer: Colors presented in this file are provided for general color information only. Due to many different monitor settings on individual computers and different light sources - these finishes may appear from actual color. Actual samples are available from the FPDC/FPS library located on the 8th floor of FHB or may be ordered directly from manufacturers.



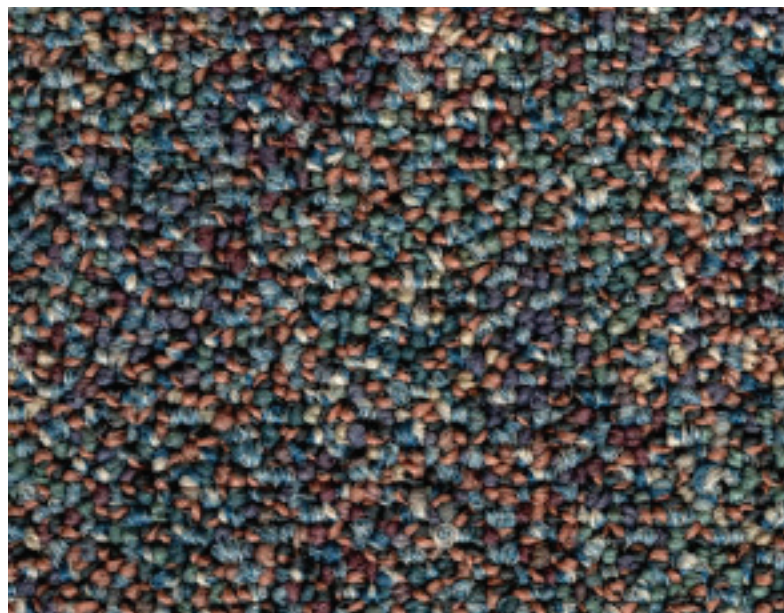
ACT-7



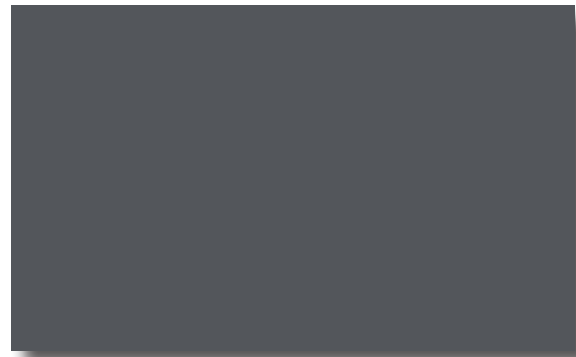
PT-33



RB-2



CPB-27



PT-117



PT-39



WS-5



BWS-5



PL-3

FACILITIES MANAGEMENT OFFICE OF

FACILITIES PLANNING,
DESIGN AND
CONSTRUCTION

INTERIOR FINISH STANDARDS
FOR

7455 Fannin St.
SOUTH CAMPUS
RESEARCH BUILDING 1
(SCRB1)

SHEET TITLE:

SCRB1
CONFERENCE
(TYPICAL)

LAST UPDATE:

01/15/2014

SHEET NO.:

6 OF **18**

PRINT

BACK TO
T.O.C.

NEXT PAGE

FINISH LEGEND

CEILING

ACT-7 Celotex
Color: Baroque

DOORS/DOOR FRAMES

PL-3 Formica
No.: 744, Lacewood Matte

PT-16 ICI
Color: Cinnamon Stick
No.: M02-1275
"Lite" trim (when applicable)

PT-39 ICI
Color: Forest Black,
Semi Gloss
No.: #578

ARCHITECTURAL WOODWORK

PL-3 Formica
No.: 744, Lacewood Matte

WALLS

PT-33 Benjamin Moore
Color: China White,
Semi Gloss

WALLGUARDS

CG-3 Acrovyn
Color: Mission White
No.: 933

FLOORS

Field Color:
VCT-6 Mannington "Essentials"
Color: Cool White
No.: 141

Accent VCT:

VCT-7 Mannington "Essentials"
(Flr 1,4) Color: Aegean
No.: 215

VCT-8 Mannington "Essentials"
(Flr 2) Color: Brick
No.: 288

VCT-10 Mannington "Essentials"
(Flr 3) Color: Marigold
No.: 253

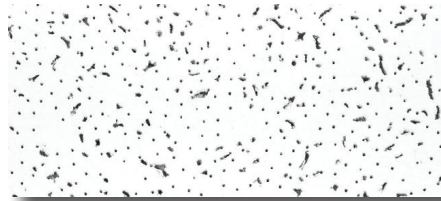
First Aid Designation:

VCT-11 Armstrong
Imperial Texture Std. Excelon
Color: Cherry Red
No.: 51816

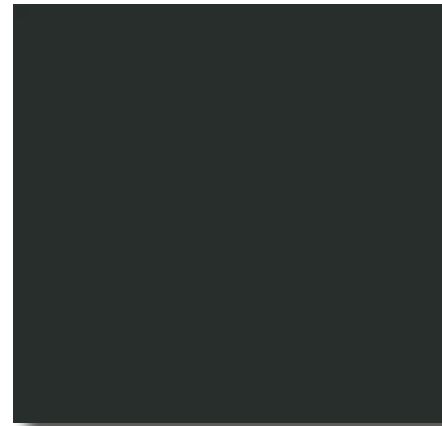
BASE

RB-2 Roppe "Pinnacle", 4" Coved

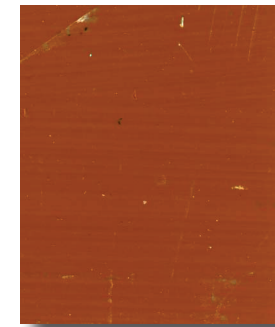
Important Disclaimer: Colors presented in this file are provided for general color information only. Due to many different monitor settings on individual computers and different light sources - these finishes may appear from actual color. Actual samples are available from the FPDC/FPS library located on the 8th floor of FHB or may be ordered directly from manufacturers.



ACT-7



PT-39



PT-16



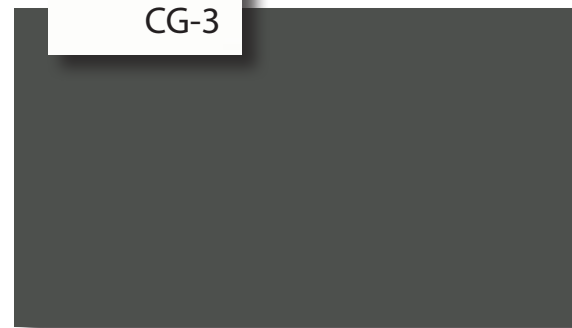
PT-33



CG-3



PL-3



RB-2



VCT-6



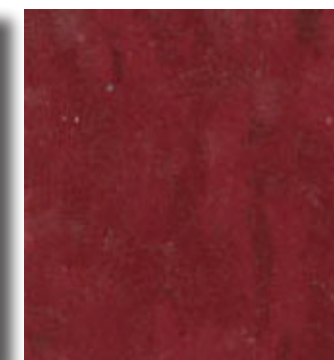
VCT-7



VCT-8



VCT-10



VCT-11

THE UNIVERSITY OF TEXAS

**MD Anderson
Cancer Center**

FACILITIES
MANAGEMENT
OFFICE OF

FACILITIES PLANNING,
DESIGN AND
CONSTRUCTION

INTERIOR FINISH STANDARDS
FOR

7455 Fannin St.
**SOUTH CAMPUS
RESEARCH BUILDING 1**
(SCRB1)

SHEET TITLE:

**SCRB1
CORRIDORS
FLRS 1 - 4**

LAST UPDATE:

01/15/2014

SHEET NO.:

7 OF **18**

PRINT

BACK TO
T.O.C.

NEXT PAGE

FINISH LEGEND

CEILING

ACT-7 Celotex
Color: Baroque

DOORS/DOOR FRAMES

PL-3 Formica
No.: 744, Lacewood Matte

PT-16 ICI
Color: Cinnamon Stick
No.: M02-1275
"Lite" trim (when applicable)

PT-39 ICI
Color: Forest Black, Semi Gloss
No.: #578

ARCHITECTURAL WOODWORK

Counter Top:
PL-26 Trespa, Top Lab
No.: TO-300

Casework:
LCW-1 Fisher-Hamilton
Color: Eggshell, EL#1377

WINDOW TREATMENT

WS-5 Solarfective
Hexcel Fabric 5%
No.: XL5
Color: Charcoal/Grey

PT-117 Benjamin Moore
Color: Deep Space
No.: 2125-20
(HemBar Paint)

BWS-5 Blackout Shade
Color: Black

WALLS

PT-33 Benjamin Moore
Color: China White, Semi Gloss

Accent Wall Options:

PT-7 Benjamin Moore
(Flr 1,4) Color: #712 Teal

PT-48 ICI
(Flr 2) Color: #276 Georgian Clay

PT-49 ICI
(Flr 3) Color: #477 Copper Hill

WALLGUARDS

CG-3 Acrovyn
Color: Mission White
No.: 933

FLOORS

Field Color:
VCT-6 Mannington "Essentials"
Color: Cool White
No.: 141

Accent VCT:
VCT-7 Mannington "Essentials"
(Flr 1,4) Color: Aegean
No.: 215

VCT-8 Mannington "Essentials"
(Flr 2) Color: Brick
No.: 288

VCT-9 Mannington "Essentials"
(Equip. Zone in Labs) Color: Sunflower
No.: 263

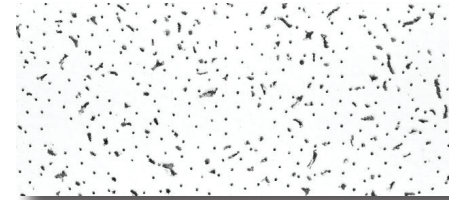
VCT-10 Mannington "Essentials"
(Flr 3) Color: Marigold
No.: 253

First Aid Designation:
VCT-11 Armstrong
Imperial Texture Std. Excelon
Color: Aegean
No.: 215

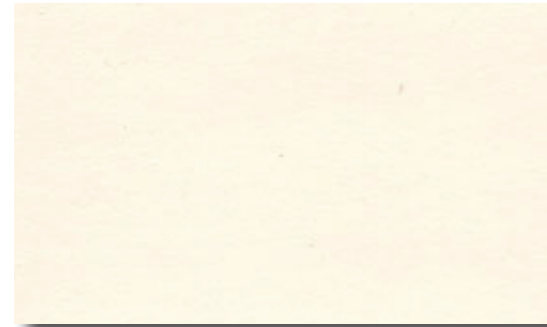
BASE

RB-2 Roppe "Pinnacle", 4" Coved
Color: Brown Black
No.: RP193

Important Disclaimer: Colors presented in this file are provided for general color information only. Due to many different monitor settings on individual computers and different light sources - these finishes may appear from actual color. Actual samples are available from the FPDC/FPS library located on the 8th floor of FHB or may be ordered directly from manufacturers.



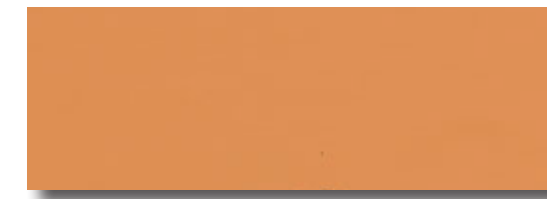
ACT-7



PT-33



PT-7



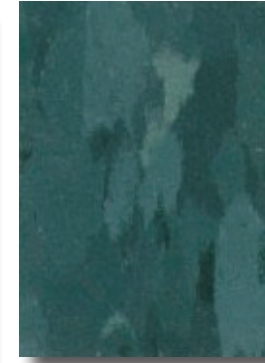
PT-48



PT-49



VCT-6



VCT-7



VCT-8



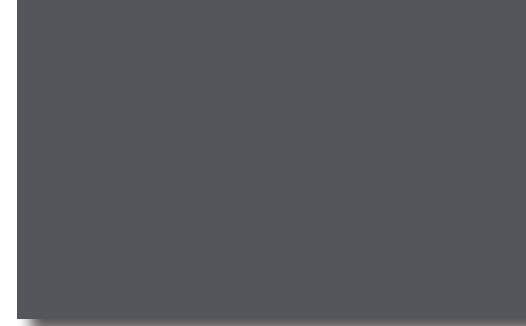
VCT-9



VCT-10



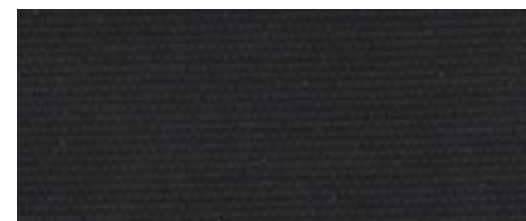
VCT-11



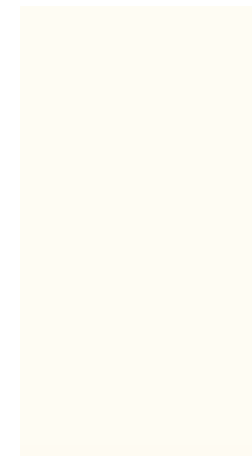
PT-117



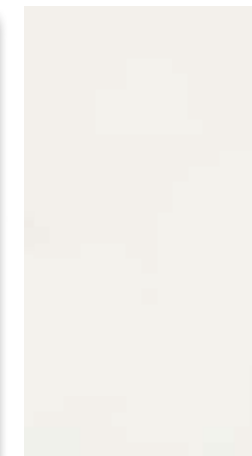
WS-5



BSW-5



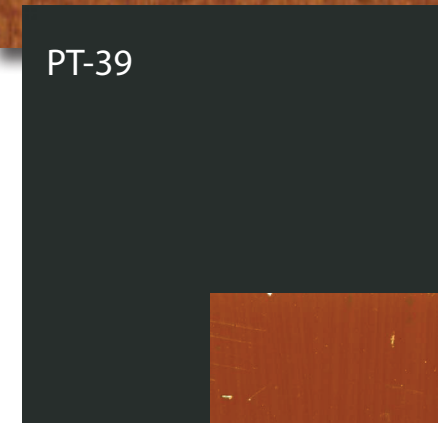
PL-26



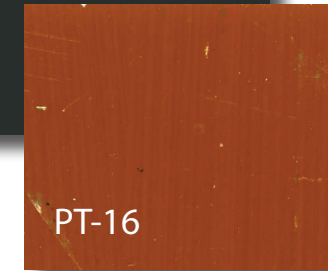
LCW-1



PL-3



PT-39



PT-16



RB-2



CG-3

THE UNIVERSITY OF TEXAS

MD Anderson
Cancer Center

FACILITIES
MANAGEMENT
OFFICE OF

FACILITIES PLANNING,
DESIGN AND
CONSTRUCTION

INTERIOR FINISH STANDARDS
FOR

7455 Fannin St.
SOUTH CAMPUS
RESEARCH BUILDING 1
(SCRB1)

SHEET TITLE:

SCRB1
LABS
RESEARCH

LAST UPDATE:

01/15/2014

SHEET NO.:

8 OF 18

PRINT

BACK TO
T.O.C.

NEXT PAGE

FINISH LEGEND

DOORS/DOOR FRAMES

- PL-3 Formica
No.: 744, Lacewood Matte
- PT-16 ICI
Color: Cinnamon Stick
No.: M02-1275
"Lite" trim (when applicable)
- PT-39 ICI
Color: Forest Black,
Semi Gloss
No.: 578

ARCHITECTURAL WOODWORK

- PL-16 Wilsonart
Color: Frosty White
No.: 1573-13

WALLS

- PT-33 Benjamin Moore
Color: China White,
Semi Gloss

FLOORS

- SHV-20 Armstrong Medintech
Color: Ixia Warm White
No.: 88476

BASE

- SHV-20 Armstrong Medintech
Color: Ixia Warm White
No.: 88476

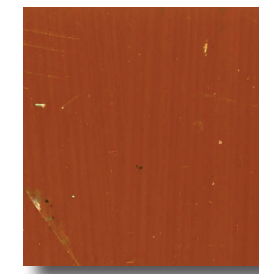
Important Disclaimer: Colors presented in this file are provided for general color information only. Due to many different monitor settings on individual computers and different light sources - these finishes may appear from actual color. Actual samples are available from the FPDC/FPS library located on the 8th floor of FHB or may be ordered directly from manufacturers.



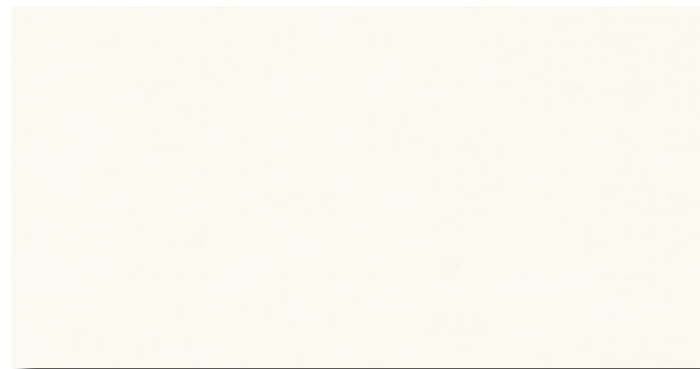
PL-3



PT-39



PT-16



PL-16



PT-33



SHV-20

THE UNIVERSITY OF TEXAS

MD Anderson
Cancer Center

FACILITIES
MANAGEMENT
OFFICE OF

FACILITIES PLANNING,
DESIGN AND
CONSTRUCTION

INTERIOR FINISH STANDARDS
FOR

7455 Fannin St.
SOUTH CAMPUS
RESEARCH BUILDING 1
(SCRB1)

SHEET TITLE:

SCRB1
LAB SUPPORT AREAS
(TISSUE CULTURE ROOMS,
CHEMICAL FUME HOOD ROOMS)

LAST UPDATE:

01/15/2014

SHEET NO.:

9 OF 18

PRINT

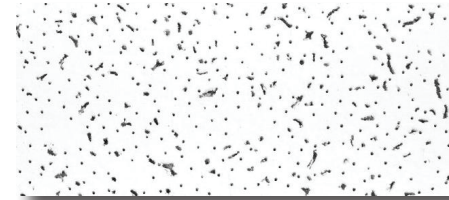
BACK TO
T.O.C.

NEXT PAGE

FINISH LEGEND

CEILING

ACT-7 Celotex
Color: Baroque

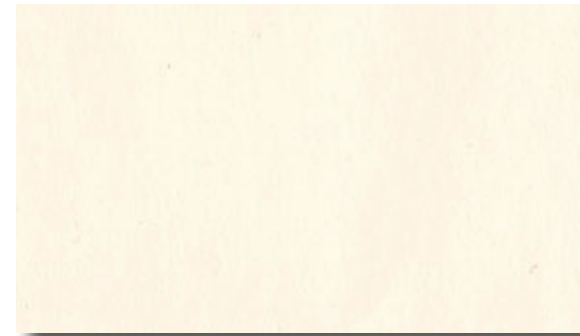


ACT-7

DOORS/DOOR FACINGS

PL-3 Formica
No.: 744, Lacewood Matte

PT-16 ICI
Color: Cinnamon Stick
No.: M02-1275
"Lite" trim (when applicable)



PT-33



PT-7



PT-48



PT-49

ARCHITECTURAL WOODWORK

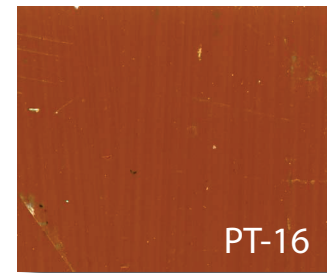
PL-3 Formica
No.: 744, Lacewood Matte

WALLS

PT-33 Benjamin Moore
Color: China White, Semi Gloss



PT-33



PT-16

Accent Wall Options:

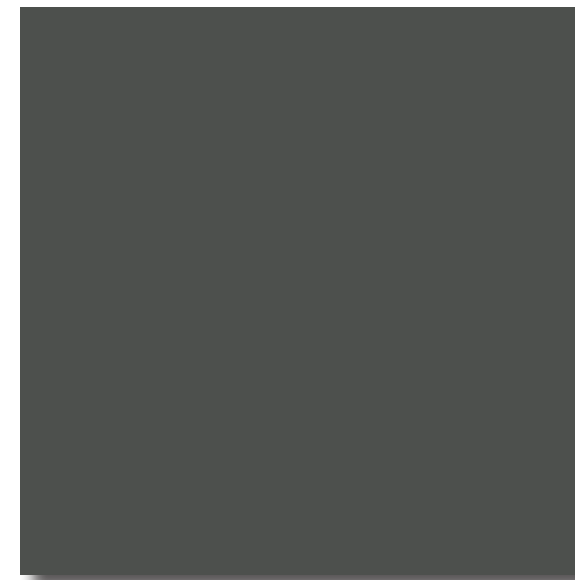
PT-7 Benjamin Moore
(Flr 1,4) Color: #712 Teal

PT-48 Benjamin Moore
(Flr 2) Color: #276 Georgian Clay

PT-49 Benjamin Moore
(Flr 3) Color: #477 Copper Hill



PT-39



RB-2

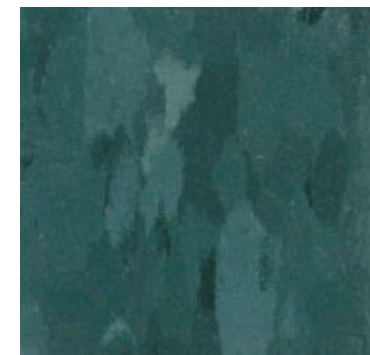
FLOORS

Field Color:
VCT-6 Mannington "Essentials"
Color: Cool White
No.: 141



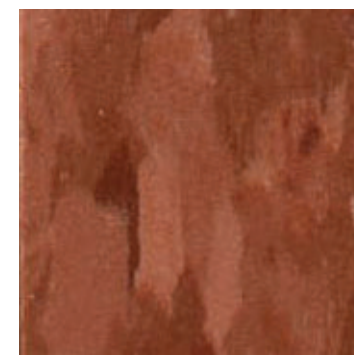
VCT-6

Accent VCT:
VCT-7 Mannington "Essentials"
(Flr 1,4) Color: Aegean
No.: 215



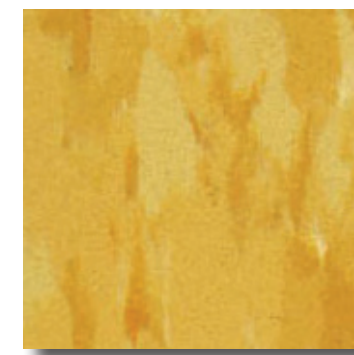
VCT-7

VCT-8 Mannington "Essentials"
(Flr 2) Color: Brick
No.: 288



VCT-8

VCT-10 Mannington "Essentials"
(Flr 3) Color: Marigold
No.: 253



VCT-10

BASE

RB-2 Roppe "Pinnacle", 4" Coved
Color: Brown Black
No.: RP193

Important Disclaimer: Colors presented in this file are provided for general color information only. Due to many different monitor settings on individual computers and different light sources - these finishes may appear from actual color. Actual samples are available from the FPDC/FPS library located on the 8th floor of FHB or may be ordered directly from manufacturers.

THE UNIVERSITY OF TEXAS

**MDAnderson
Cancer Center**

FACILITIES
MANAGEMENT
OFFICE OF

FACILITIES PLANNING,
DESIGN AND
CONSTRUCTION

INTERIOR FINISH STANDARDS
FOR

7455 Fannin St.
**SOUTH CAMPUS
RESEARCH BUILDING 1
(SCRB1)**

SHEET TITLE:

**SCRB1
LOBBY ELEVATOR
FLRS. 2-4**

LAST UPDATE:

01/15/2014

SHEET NO.:

10 OF **18**

PRINT

BACK TO
T.O.C.

NEXT PAGE

FINISH LEGEND

CEILING

ACT-7 Celotex
Color: Baroque

DOORS/DOOR FRAMES

PL-3 Formica
No.: 744, Lacewood Matte

PT-16 ICI
Color: Cinnamon Stick
No.: M02-1275
"Lite" trim (when applicable)

PT-39 ICI
Color: Forest Black, Semi Gloss
No.: 578

ARCHITECTURAL WOODWORK

VWC-13 Carnegie
Xorel #6423 Strie
Color: 551

SSM-38 DuPont Corian
Sequoia

WALLS

PT-33 Benjamin Moore
Color: China White, Semi Gloss

Accent Wall:
PT-35 ICI
Color: #952 Loden

Elevator Cab Upper Wall:
PL-28 Wilsonart
Color: Dove Morraine
No.: 4640-60

Elevator Cab Lower Wall:
PL-3 Formica
Color: Lacewood Matte
No.: 744-58

FLOORS

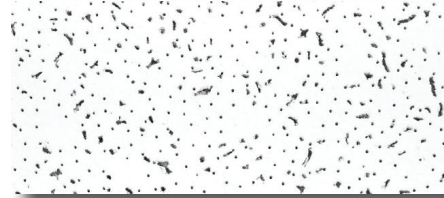
Field Color:
TRZ-4 Southern Tile & Terrazzo
Sample #10

Accent VCT:
TRZ -5 Southern Tile & Terrazzo
Sample #TS-407-4

BASE

TRZ-4 Southern Tile & Terrazzo
Sample #10

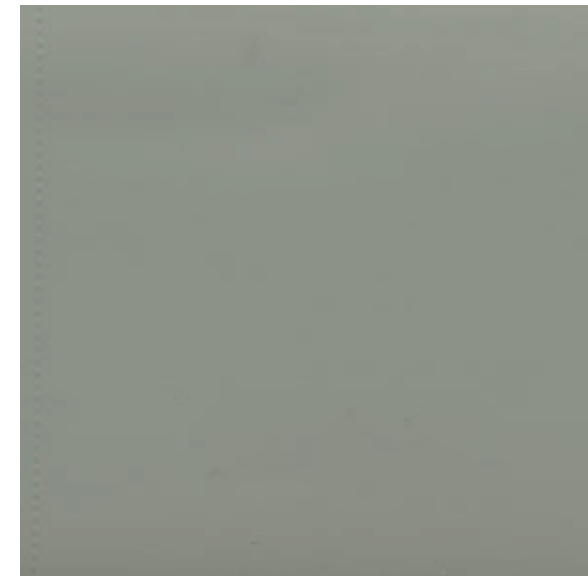
Important Disclaimer: Colors presented in this file are provided for general color information only. Due to many different monitor settings on individual computers and different light sources - these finishes may appear from actual color. Actual samples are available from the FPDC/FPS library located on the 8th floor of FHB or may be ordered directly from manufacturers.



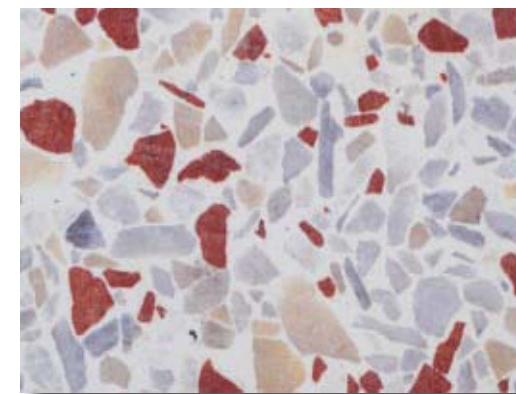
ACT-7



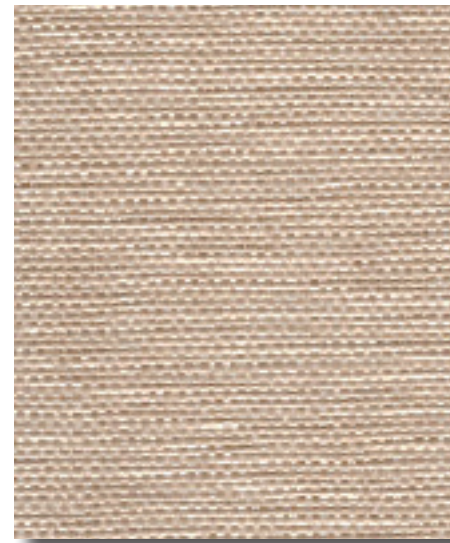
PT-33



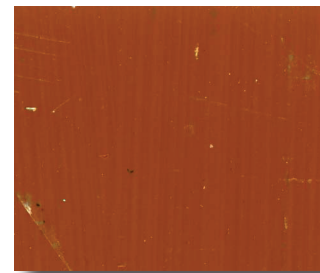
PT-35



TRZ-5



VWC-13



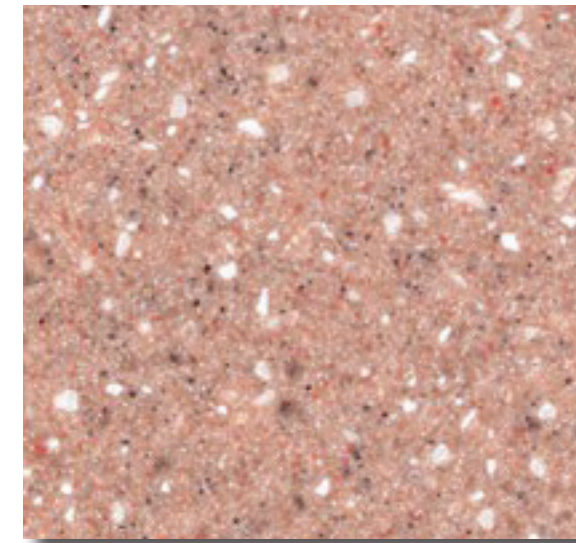
PT-16



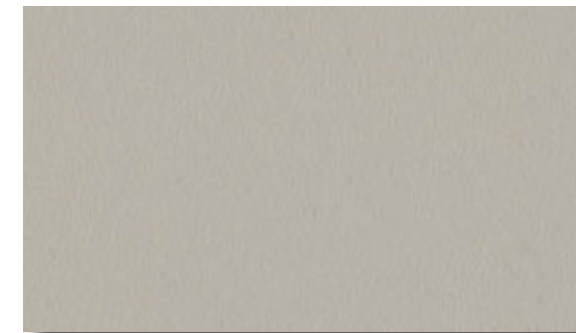
PT-39



TRZ-4



SSM-38



PL-28



PL-3

SHEET TITLE:

SCRB1
LOBBY
FLR 1 PUBLIC

LAST UPDATE:

01/15/2014

SHEET NO.:

11 OF **18**

PRINT

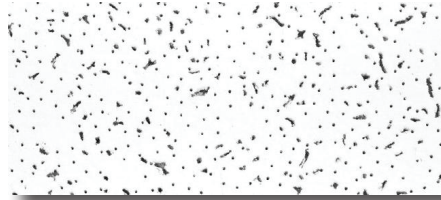
BACK TO
T.O.C.

NEXT PAGE

FINISH LEGEND

CEILING

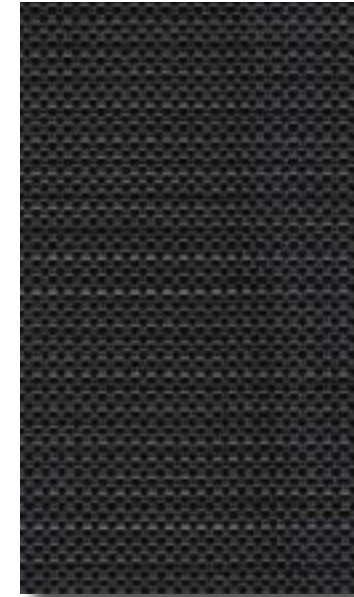
ACT-7 Celotex
Color: Baroque



ACT-7

WINDOW TREATMENT

WS-5 Solarfective
Hexcel Fabric 5%
No: XL5
Color: Charcoal/Grey



WS-5

PT-117 Benjamin Moore
Color: Deep Space
No.: 2125-20
(HemBar Paint)

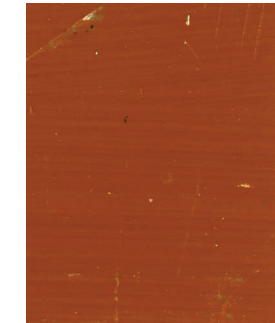


PT-117

DOORS/DOOR FRAMES

PL-3 Formica
No.: 744, Lacewood Matte

PT-16 ICI
Color: Cinnamon Stick
No.: M02-1275
"Lite" trim (when applicable)



PT-16

PT-39 ICI
Color: Forest Black,
Semi Gloss
No.: #578



PT-39

WALLS

PT-33 Benjamin Moore
Color: China White,
Semi Gloss



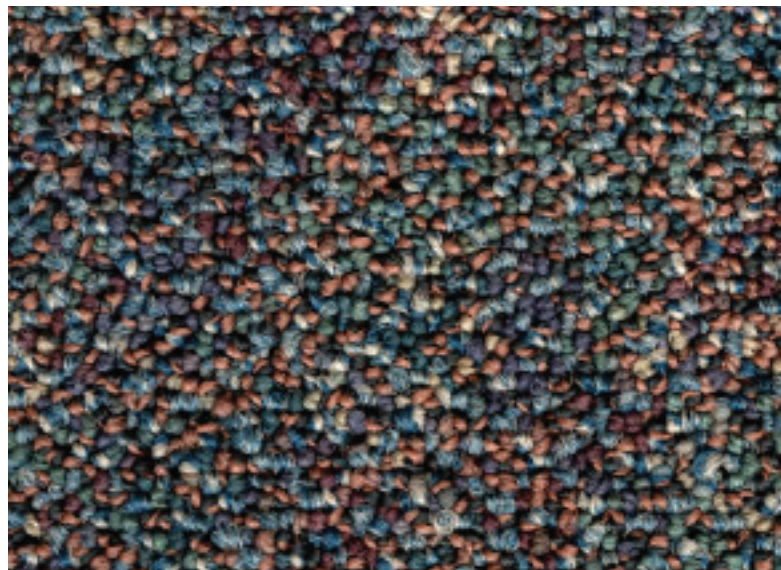
PT-33



RB-2

FLOORS

CPB-27 Designweave
Color: Palladian, Crete



CPB-27

BASE

RB-2 Roppe "Pinnacle", 4" Coved
Color: Brown Black
No.: RP193



PL-3

Important Disclaimer: Colors presented in this file are provided for general color information only. Due to many different monitor settings on individual computers and different light sources - these finishes may appear from actual color. Actual samples are available from the FPDC/FPS library located on the 8th floor of FHB or may be ordered directly from manufacturers.

SHEET TITLE:

SCRB1
OFFICE SPACE
(FACULTY)

LAST UPDATE:

01/15/2014

SHEET NO.:

12 OF **18**

PRINT

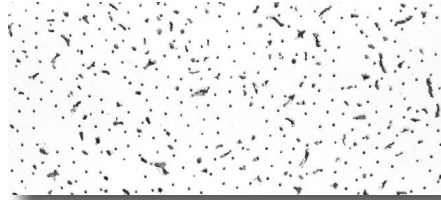
BACK TO
T.O.C.

NEXT PAGE

FINISH LEGEND

CEILING

ACT-7 Celotex
Color: Baroque



ACT-7

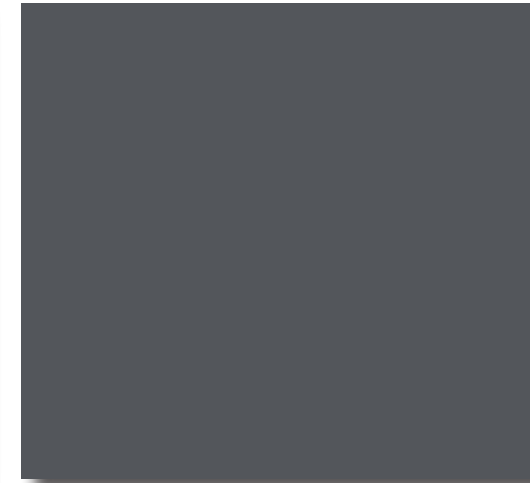
WINDOW TREATMENT

WS-5 Solarfective
Hexcel Fabric 5%
No: XL5
Color: Charcoal/Grey



WS-5

PT-117 Benjamin Moore
Color: Deep Space
No.: 2125-20
(HemBar Paint)

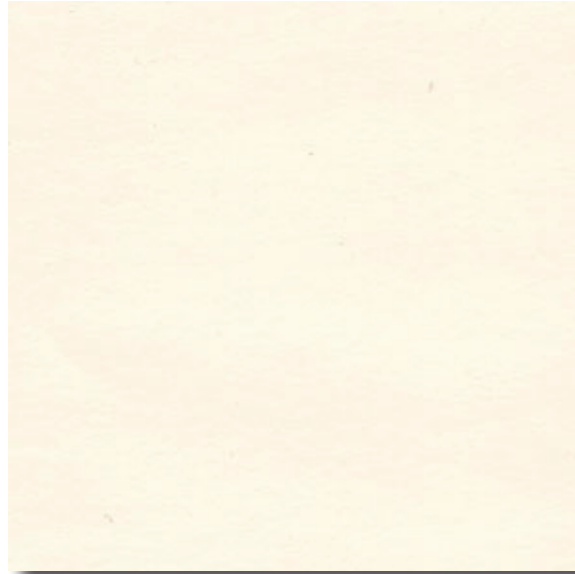


PT-117

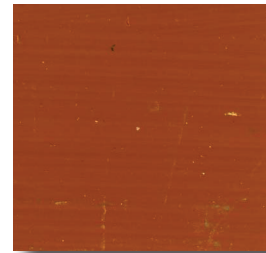
DOORS/DOOR FRAMES

PL-3 Formica
No.: 744, Lacewood Matte

PT-16 ICI
Color: Cinnamon Stick
No.: M02-1275
"Lite" trim (when applicable)



PT-33

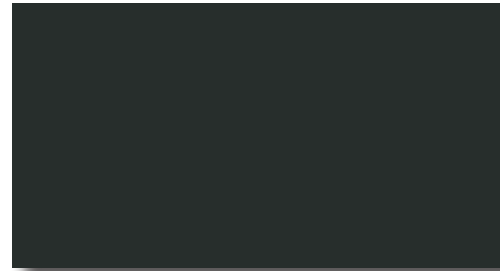


PT-16

PT-39 ICI
Color: Forest Black,
Semi Gloss
No.: 578



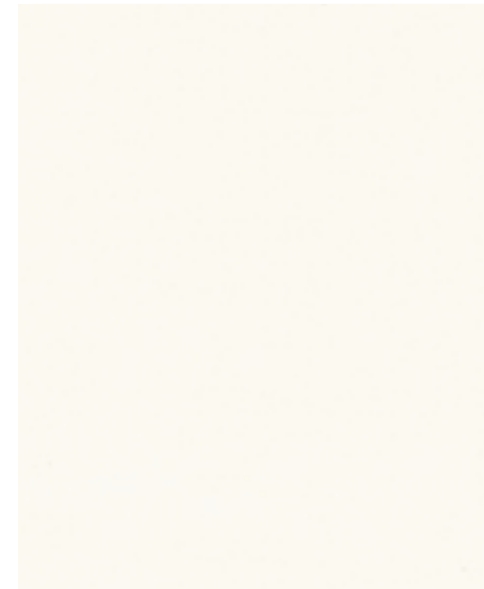
RB-2



PT-39

ARCHITECTURAL WOODWORK

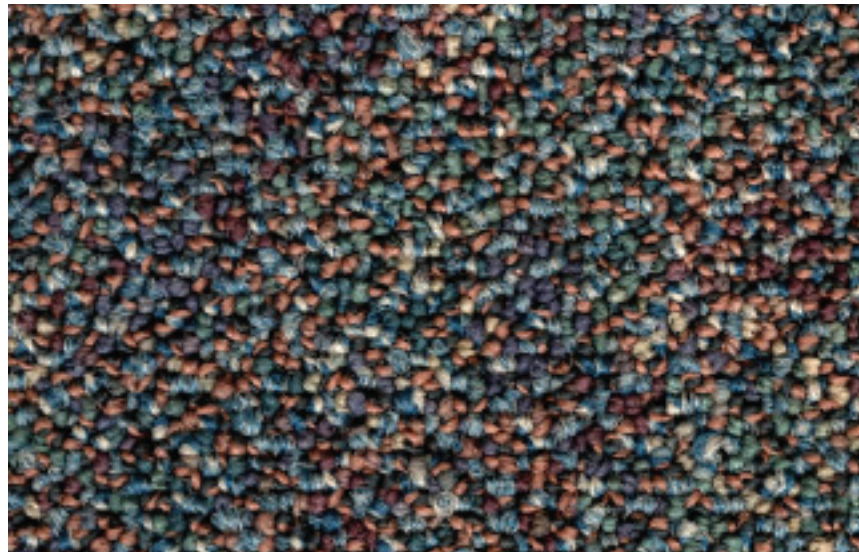
PL-16 Wilsonart
Color: Frosty White
No.: 1573-13



PL-16

WALLS

PT-33 Benjamin Moore
Color: China White,
Semi Gloss



CPB-27

FLOORS

CPB-27 Designweave
Color: Palladian, Crete

BASE

RB-2 Roppe "Pinnacle", 4" Coved
Color: Brown Black
No.: RP193



PL-3

Important Disclaimer: Colors presented in this file are provided for general color information only. Due to many different monitor settings on individual computers and different light sources - these finishes may appear from actual color. Actual samples are available from the FPDC/FPS library located on the 8th floor of FHB or may be ordered directly from manufacturers.

SHEET TITLE:

SCRB1
OFFICE SPACE
(OTHER)

LAST UPDATE:

01/15/2014

SHEET NO.:

13 OF **18**

PRINT

BACK TO
T.O.C.

NEXT PAGE

FINISH LEGEND

DOORS/DOOR FRAMES

- PL-3 Formica
No.: 744, Lacewood Matte
- PT-16 ICI
Color: Cinnamon Stick
No.: M02-1275
"Lite" trim (when applicable)
- PT-39 ICI
Color: Forest Black,
Semi Gloss
No.: 578

WALLS

- SSM-37 Corian
Color: Glacier White

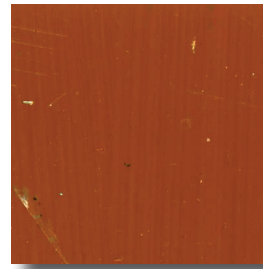
FLOORS

- SHV-12 Forbo
Traction Step Slip
Retardent Non-Studded
Color No.: 7512

BASE

- SHV-12 Forbo
Traction Step Slip
Retardent Non-Studded
Color No.: 7512

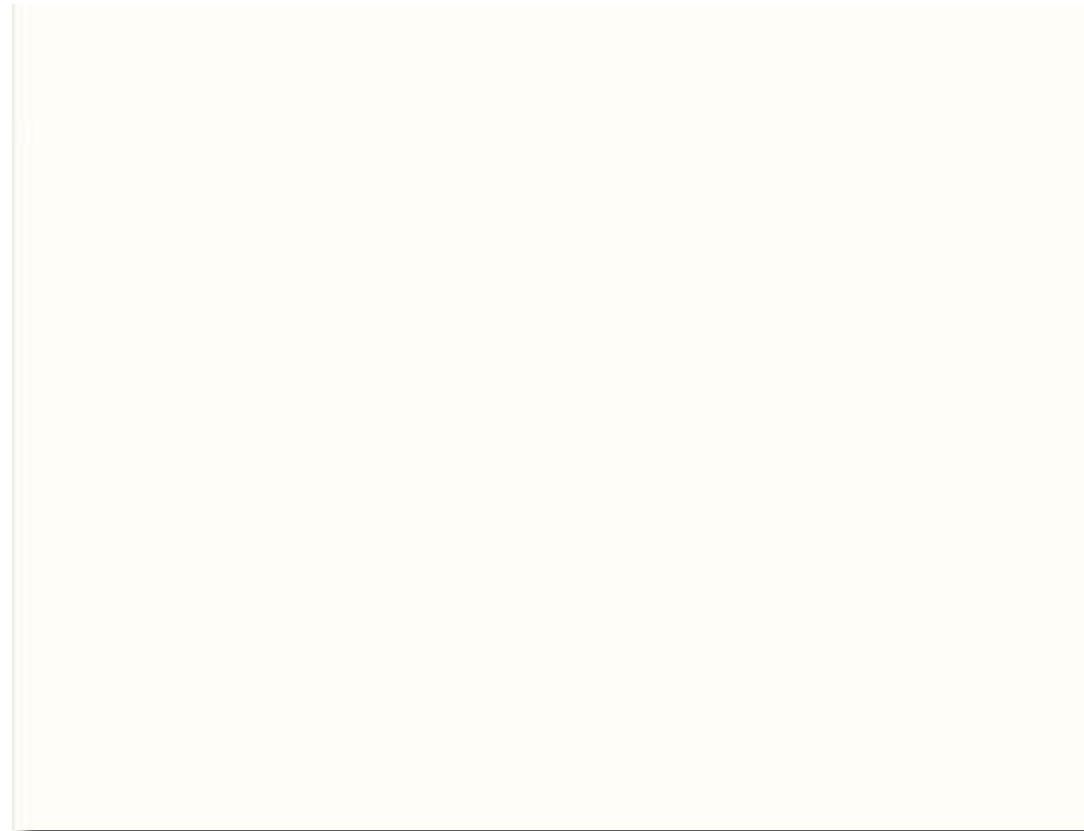
Important Disclaimer: Colors presented in this file are provided for general color information only. Due to many different monitor settings on individual computers and different light sources - these finishes may appear from actual color. Actual samples are available from the FPDC/FPS library located on the 8th floor of FHB or may be ordered directly from manufacturers.



PT-16



PT-39



SSM-37



PL-3



SHV-12

FACILITIES MANAGEMENT OFFICE OF

FACILITIES PLANNING,
DESIGN AND
CONSTRUCTION

INTERIOR FINISH STANDARDS
FOR

7455 Fannin St.
SOUTH CAMPUS
RESEARCH BUILDING 1
(SCRB1)

SHEET TITLE:

SCRB1
SHOWER ROOMS

LAST UPDATE:

01/15/2014

SHEET NO.:

14 OF **18**

PRINT

BACK TO
T.O.C.

NEXT PAGE

FINISH LEGEND

CEILING

ACT-7 Celotex
Color: Baroque

DOORS/DOOR FRAMES

PL-3 Formica
No.: 744, Lacewood Matte

PT-16 ICI
Color: Cinnamon Stick
No.: M02-1275
"Lite" trim (when applicable)

PT-39 ICI
Color: Forest Black,
Semi Gloss
No.: #578

ARCHITECTURAL WOODWORK

PL-16 Wilsonart
Color: Frosty White
No.: 1573-13

WALLS

PT-33 Benjamin Moore
Color: China White,
Semi Gloss

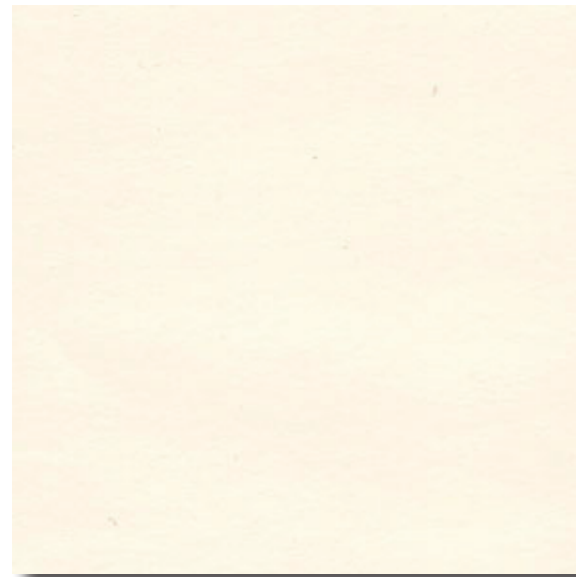
FLOORS

VCT-6 Mannington Essentials
Color: Cool White #141

BASE

RB-2 Roppe "Pinnacle", 4" Coved
Color: Brown Black
No.: RP193

Important Disclaimer: Colors presented in this file are provided for general color information only. Due to many different monitor settings on individual computers and different light sources - these finishes may appear from actual color. Actual samples are available from the FPDC/FPS library located on the 8th floor of FHB or may be ordered directly from manufacturers.



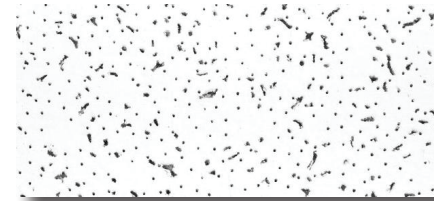
PT-33



RB-2



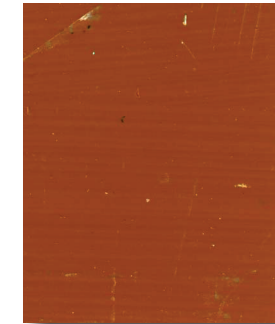
VCT-6



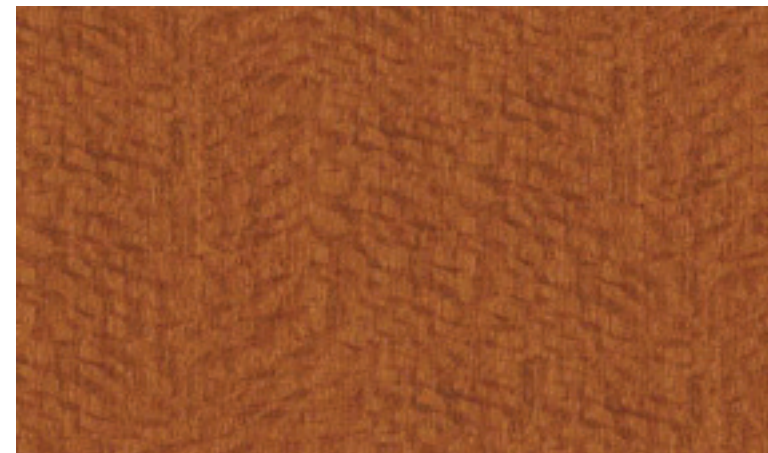
ACT-7



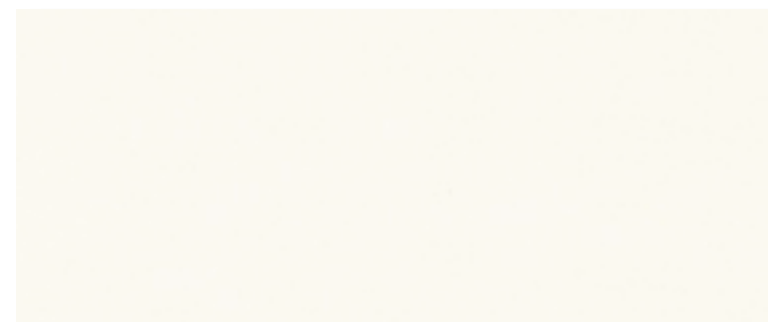
PT-39



PT-16



PL-3



PL-16

FACILITIES MANAGEMENT OFFICE OF

FACILITIES PLANNING,
DESIGN AND
CONSTRUCTION

INTERIOR FINISH STANDARDS
FOR

7455 Fannin St.
SOUTH CAMPUS
RESEARCH BUILDING 1
(SCRB1)

SHEET TITLE:

SCRB1
STORAGE ROOM

LAST UPDATE:

01/15/2014

SHEET NO.:

15 OF **18**

PRINT

BACK TO
T.O.C.

NEXT PAGE

FINISH LEGEND

CEILING

ACT-7 Celotex
Color: Baroque

DOORS/DOOR FRAMES

PL-3 Formica
No.: 744, Lacewood Matte

"Lite" trim (when applicable)
PT-16 ICI
Color: Cinnamon Stick
No.: M02-1275

Toilet Partitions:
MTC-4 Hadrian
523 Celadon

PT-39 ICI
Color: Forest Black,
Semi Gloss
No.: #578

ARCHITECTURAL WOODWORK

Sink Counter:
SSM-38 Dupont
Corian
Color: Sequoia

WALLS

Field :
TLW-3 Dal Tile
D145 Majorca
6"X6"
TLW-10 American Olean
"Bright & Matte"
Color: Sage #A003

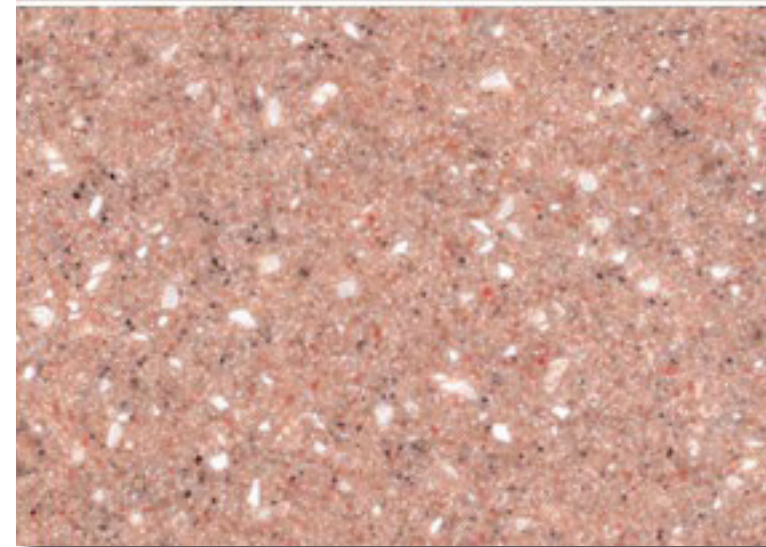
FLOORS

TLF-15 Crossville Ceramic Tile
Color: A658 Fawn

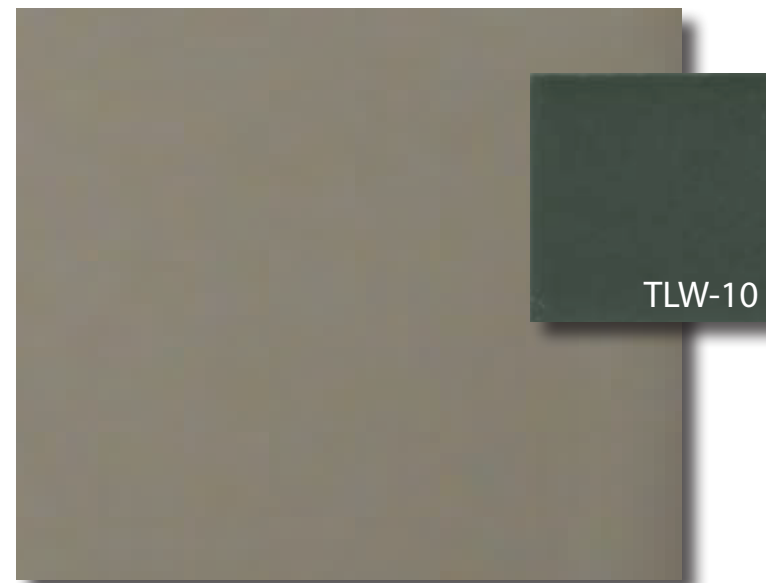
BASE

TLF-15 Crossville Ceramic Tile
Color: A658 Fawn

Important Disclaimer: Colors presented in this file are provided for general color information only. Due to many different monitor settings on individual computers and different light sources - these finishes may appear from actual color. Actual samples are available from the FPDC/FPS library located on the 8th floor of FHB or may be ordered directly from manufacturers.



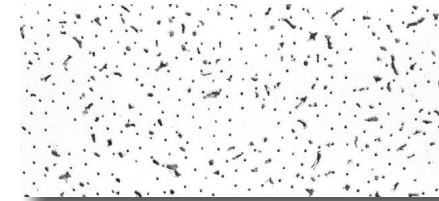
SSM-38



TLW-3



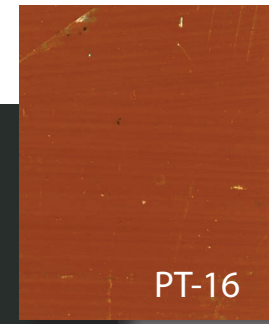
TLF-15



ACT-7



PT-39



PT-16



PL-3



MTC-4

THE UNIVERSITY OF TEXAS

MDAnderson
Cancer Center

FACILITIES
MANAGEMENT
OFFICE OF

FACILITIES PLANNING,
DESIGN AND
CONSTRUCTION

INTERIOR FINISH STANDARDS
FOR

7455 Fannin St.
SOUTH CAMPUS
RESEARCH BUILDING 1
(SCRB1)

SHEET TITLE:

SCRB1
TOILETS
FLR 1

LAST UPDATE:

01/15/2014

SHEET NO.:

16 OF **18**

PRINT

BACK TO
T.O.C.

NEXT PAGE

FINISH LEGEND

CEILING

ACT-7 Celotex
Color: Baroque

DOORS/DOOR FRAMES

PL-3 Formica
No.: 744, Lacewood Matte

"Lite" trim (when applicable)

PT-16 ICI
Color: Cinnamon Stick
No.: M02-1275

Toilet Partitions:

MTC-2 Hadrian
520 Dark Green

PT-39 ICI
Color: Forest Black, Semi Gloss
No.: #578

ARCHITECTURAL WOODWORK

Sink Counter:
SSM-9 Dupont
Corian
Color: Evergreen

FLOORS

TLF-11 DalTile Porcelato
Color: CD-58 Bianco Sardo
12X12 Unpolished

BASE

TLF-12 Crossville Ceramic Tile
Color: A658 Fawn
(Matches Bianco Sardo CD-58)

Important Disclaimer: Colors presented in this file are provided for general color information only. Due to many different monitor settings on individual computers and different light sources - these finishes may appear from actual color. Actual samples are available from the FPDC/FPS library located on the 8th floor of FHB or may be ordered directly from manufacturers.



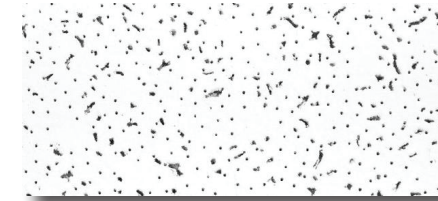
SSM-9



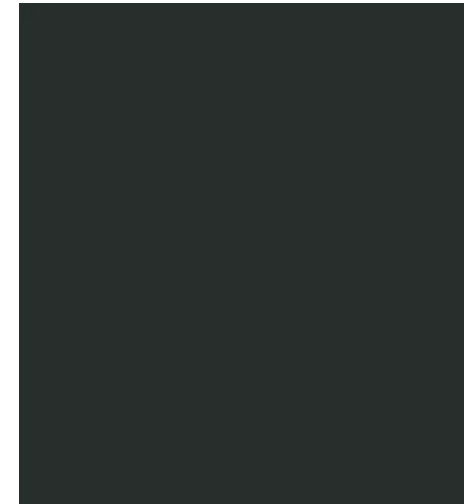
TLF-11



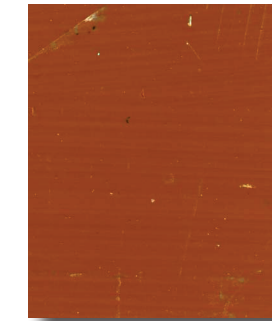
TLF-12



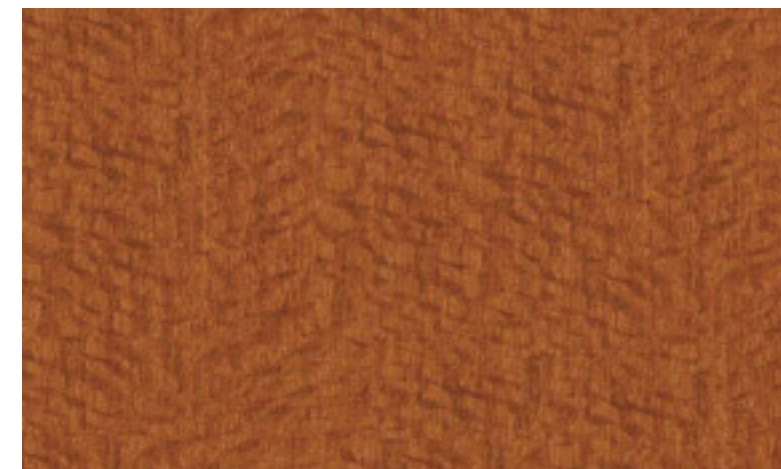
ACT-7



PT-39



PT-16



PL-3



MTC-2

FACILITIES MANAGEMENT OFFICE OF

FACILITIES PLANNING,
DESIGN AND
CONSTRUCTION

INTERIOR FINISH STANDARDS
FOR

7455 Fannin St.
**SOUTH CAMPUS
RESEARCH BUILDING 1
(SCRB1)**

SHEET TITLE:

**SCRB1
TOILETS (TYPICAL)
FLRS 2-4**

LAST UPDATE:

01/15/2014

SHEET NO.:

17 OF **18**

PRINT

BACK TO
T.O.C.

NEXT PAGE

FINISH LEGEND

DOCUMENT REVISION HISTORY			
Issue	Date	Revision Description	Revisor
Rev. 0	10/11/12	Initial Adoption of South Campus Research Building 1 Interior Finishes.	RP
Rev. 1	01/15/2014	Departmental name change	JKT

Important Disclaimer: Colors presented in this file are provided for general color information only. Due to many different monitor settings on individual computers and different light sources - these finishes may appear from actual color. Actual samples are available from the FPDC/FPS library located on the 8th floor of FHB or may be ordered directly from manufacturers.

**FACILITIES
MANAGEMENT
OFFICE OF**

FACILITIES PLANNING,
DESIGN AND
CONSTRUCTION

INTERIOR FINISH STANDARDS
FOR

7455 Fannin St.
**SOUTH CAMPUS
RESEARCH BUILDING 1**
(SCRB1)

SHEET TITLE:

**SCRB1
DOCUMENT REVISION
HISTORY**

LAST UPDATE:

01/15/2014

SHEET NO.:

18 OF 18