

## TABLE OF CONTENTS

### SHEET:

- 1 - TABLE OF CONTENTS
- 2 - FINISH SCHEDULE - 1/11
- 3 - FINISH SCHEDULE - 2/11
- 4 - FINISH SCHEDULE - 3/11
- 5 - FINISH SCHEDULE - 4/11
- 6 - FINISH SCHEDULE - 5/11
- 7 - FINISH SCHEDULE - 6/11
- 8 - FINISH SCHEDULE - 7/11
- 9 - FINISH SCHEDULE - 8/11
- 10 - FINISH SCHEDULE - 9/11
- 11 - FINISH SCHEDULE - 10/11
- 12 - FINISH SCHEDULE - 11/11
- 13 - CONFERENCE, LEVELS 2 & 3  
EDUCATION/ TRAINING RMS.
- 14 - CONF. SPACE,  
LEVEL 3/ MULTIPURPOSE RMS.
- 15 - CONF. SPACE, DPMT'L.,  
LEVELS 4 - 13
- 16 - CONFERENCE SPACE, DPMT'L.,  
LEVELS 14 - 19
- 17 - CONF. SPACE, EVP SUITE
- 18 - CONF. SPACE, LVL 18 & 20
- 19 - CONF. SPACE, WEISS REPLACEMENT,  
LVL 20
- 20 - CONF. SPACE, SHIVERS REPLACEMENT,  
LVL 20
- 21 - SERVING AREA OFF OF SHIVERS
- 22 - PANTRY AREA OFF OF SHIVERS
- 23 - CORRIDORS - PUBLIC LEVELS - 2 & 3
- 24 - CORRIDORS - PUBLIC LEVELS 4 - 19
- 25 - CORRIDORS - SERVICE TENANT FLOORS
- 26 - DINING - LEVEL 2 KITCHEN AREA
- 27 - DINING - LEVEL 3 PUBLIC, LANTERN  
CAFE
- 28 - DINING - LEVEL 3 PUBLIC, LITE BYTES
- 29 - DOCK AND MAINTENANCE, LVL 1
- 30 - ELEVATOR CABS
- 31 - ELEVATOR LOBBIES TENANT FLOORS
- 32 - ENTRY VESTIBULE, LVL 1
- 33 - FITNESS CENTER, LVL 2
- 34 - FITNESS CENTER, LVL 2 - LOCKER RMS
- 35 - LIBRARY, LEVEL 21 - RESEARCH  
MEDICAL
- 36 - LOBBY - MAIN LVL. 1
- 37 - LOBBY - LVLS 2 & 3
- 38 - OFFICE SPACE (TENANT SPACE) LVLS 4  
- 20
- 39 - OFFICE - EVP SUITES, GOV. REL. & PUB.  
AFFAIRS
- 40 - OFFICE - PRESIDENT'S OFFICE
- 41 - RESTROOMS - PUBLIC
- 42 - RESTROOMS - SINGLE USER EVP'S
- 43 - RESTROOMS - PRESIDENT'S
- 44 - SHOWER ROOMS
- 45 - STAIRWELLS
- 46 - STORAGE ROOMS
- 47 - TV STUDIO
- 48 - WORK ROOMS & BREAK ROOMS
- 49 - PAT DOCUMENT REVISION HISTORY

Important Disclaimer: Colors presented in this file are provided for general color information only. Due to many different monitor settings on individual computers and different light sources - these finishes may appear from actual color. Actual samples are available from the FPDC/FPS library located on the 8th floor of FHB or may be ordered directly from manufacturers.



Pickens Academic Tower

## FACILITIES MANAGEMENT OFFICE OF

### FACILITIES PLANNING, DESIGN AND CONSTRUCTION

#### INTERIOR FINISH STANDARDS FOR

1400 Hermann Pressler Dr.  
T.BoonePickensAcademicTower  
(PAT)

#### SHEET TITLE:

## PAT TABLE OF CONTENTS

#### LAST UPDATE:

10/12/12

#### SHEET NO.:

1 OF 49

FILE NAME: ODGECBPATR1.indd

PRINT

EXIT

NEXT PAGE

Interior Finish Standards

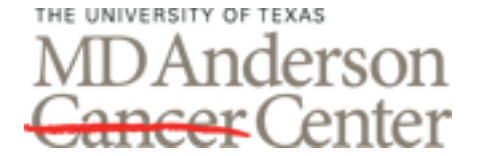
Pickens Academic Tower (PAT)

1400 Pressler

Updated by LCT : 08/09/2012

This schedule is intended to convey the general MDACC "standard" products used in the indicated room types to assist with the **Design Development phase only** of renovation or new construction projects. Finish legends and room finish schedules for construction documents **MUST** be reviewed and approved by the MDACC Planner/Designer assigned to the project. All Planner/Designers are responsible for verifying the information herein for accuracy. Contact Facilities Planning, Design and Construction/Facilities Planning Services (FPS) at ext. 2-2207 to clarify "special" finishes and applications.

Room Type	Flooring	Base	Walls	Wall & Corner Guards	Doors	Door Frame	Ceiling	Millwork / Casework	Misc/Other	Window Treatment
Conference Levels 2 & 3 Education/ Training Rooms & Distance Learning Center (DLC)	<b>CPT-34</b> Interface "Nature Trails" Custom Color #472273 04/2011 Changed Yarn System New #176614	<u>DLC</u> <b>RB-22</b> Roppe 4" Rubber Straight Base Color: #P 100 Black	<u>General Paint Color</u> <b>PT-55</b> Benjamin Moore Brandy Cream OC-4 Finish: Satin	N/A	<b>PL-38</b> Nevamar WA0002E Textured Color: Tangier Anigre	<b>AF-3</b> Raco-Altura Alum Frame-Duranar # UC51568 XL Champagne Gold	<u>Painted Gypboard Clq.</u> <b>PT-79</b> Benjamin Moore Interior Ready Mix White	<u>Vertical Surfaces</u> <b>PL-38</b> Nevamar WA0002E Color: Tangier Anigre	<u>Moveable Partitions</u> Modern Fold <b>FWC-11</b> Wolf Gordon WG3584686	<u>Exterior Windows</u> <b>WS-7</b> Solarfective 5% Window Shade Color: #502 White Beige
	<u>Specific Areas on Level 2</u> <b>VCT-15</b> Mannington "Inspirations" #417 Cream Tones 12"x12" To be used w/ FT-5	<u>Typical</u> <b>RB-6</b> Johnsonite 4" Color: Fawn	<u>Accent Paint</u> <b>PT-59</b> Benjamin Moore #719 Hemlock <b>FWC-8</b> Knoll Textiles Tailor Made Color: Sage #W133/6 -AND- <b>FWC-9</b> Knoll Textiles Tailor Made Color: Muslin #W133/2	<u>Distance Learning Center</u> <b>AWT-15</b> Guilford of Maine Lido #2858 Color: #013 Green Bay			<b>ACT-2</b> Armstrong Cortega 770 2'x2' Color: White Texture: Smooth	<u>ACT-26</u> Armstrong Fine Fissured Tegular Edge Lay-in Acoustical Ceiling Tile 1828 White Texture: Medium	<u>DLC Tech Desk, Stair Table Tops Training Rail &amp; Serving Area Counter Top</u> <b>SSM-23</b> Corian Color: Gravel Finish: Semi-Gloss	<u>Rooms &amp; DLC</u> <b>PL-29</b> Nevamar MR2005T Color: Taupe Matrix
Conference Level 3 Multi Purpose Rooms	<b>CPT-34</b> Interface "Nature Trails" Custom Color #472273 04/2011 Changed Yarn System New #176614	<b>RB-6</b> Johnsonite 4" Color: Fawn	<u>General Paint Color</u> <b>PT-55</b> Benjamin Moore Brandy Cream OC-4 Finish: Satin	N/A	<b>PL-38</b> Nevamar WA0002E Textured Color: Tangier Anigre	<b>AF-3</b> Raco-Altura Alum Frame-Duranar # UC51568 XL Champagne Gold	<u>Painted Gypboard Clq.</u> <b>PT-79</b> Benjamin Moore Interior Ready Mix White	<u>Serving Areas Counter Tops</u> <b>SSM - 9</b> DuPont "Corian" Evergreen	<u>Moveable Partitions</u> Modern Fold <b>FWC-8</b> Knoll Textiles Tailor Made Color: Sage #W133/6 -AND- <b>FWC-9</b> Knoll Textiles Tailor Made Color: Muslin #W133/2	N/A
	<u>Specific Areas In Multi Purpose Rooms</u> <b>VCT-15</b> Mannington "Inspirations" #417 Cream Tones 12"x12" To be used w/ FT-5		<b>FWC-8</b> Knoll Textiles Tailor Made Color: Sage #W133/6 -AND- <b>FWC-9</b> Knoll Textiles Tailor Made Color: Muslin #W133/2				<b>ACT-2</b> Armstrong "Cortega 770" 2'x2' White	<u>Serving Areas Vertical Surfaces</u> <b>PL-38</b> Nevamar WA0002E Color: Tangier Anigre	<u>Circle Lights</u> Prudential #P3940 6T8 WA TMW DC 277 SUR DM 10THD MOD	
									<u>Projector Alcove</u> <b>PL-38</b> Nevamar WA0002E Textured Color: Tangier Anigre	



FACILITIES MANAGEMENT OFFICE OF

FACILITIES PLANNING, DESIGN AND CONSTRUCTION

INTERIOR FINISH STANDARDS FOR

1400 Hermann Pressler Dr.  
T.BoonePickensAcademicTower (PAT)

SHEET TITLE:

PAT FINISH SCHEDULE 1/11

LAST UPDATE:

10/12/12

SHEET NO.:

2 OF 49

FILE NAME: ODGECBPATR1.indd

PRINT

BACK TO T.O.C.

NEXT PAGE

---

FACILITIES  
MANAGEMENT  
OFFICE OF

FACILITIES PLANNING,  
DESIGN AND  
CONSTRUCTION

---

INTERIOR FINISH STANDARDS  
FOR

1400 Hermann Pressler Dr.  
T.BoonePickensAcademicTower  
(PAT)

---

SHEET TITLE:

PAT  
FINISH SCHEDULE  
2/11

---

LAST UPDATE:

10/12/12

---

SHEET NO.:

3 OF 49

FILE NAME: ODGECBPATR1.indd

PRINT

BACK TO  
T.O.C.

NEXT PAGE

FACILITIES  
MANAGEMENT  
OFFICE OF

FACILITIES PLANNING,  
DESIGN AND  
CONSTRUCTION

INTERIOR FINISH STANDARDS  
FOR

1400 Hermann Pressler Dr.  
T.BoonePickensAcademicTower  
(PAT)

SHEET TITLE:

PAT  
FINISH SCHEDULE  
3/11

LAST UPDATE:

10/12/12

SHEET NO.:

4 OF 49

FILE NAME: ODGECBPATR1.indd

PRINT

BACK TO  
T.O.C.

NEXT PAGE

FACILITIES  
MANAGEMENT  
OFFICE OF

FACILITIES PLANNING,  
DESIGN AND  
CONSTRUCTION

INTERIOR FINISH STANDARDS  
FOR

1400 Hermann Pressler Dr.  
T.BoonePickensAcademicTower  
(PAT)

SHEET TITLE:

PAT  
FINISH SCHEDULE  
4/11

LAST UPDATE:

10/12/12

SHEET NO.:

5 OF 49

FILE NAME: ODGECBPATR1.indd

PRINT

BACK TO  
T.O.C.

NEXT PAGE

FACILITIES  
MANAGEMENT  
OFFICE OF

FACILITIES PLANNING,  
DESIGN AND  
CONSTRUCTION

INTERIOR FINISH STANDARDS  
FOR

1400 Hermann Pressler Dr.  
T.BoonePickensAcademicTower  
(PAT)

SHEET TITLE:

PAT  
FINISH SCHEDULE  
5/11

LAST UPDATE:

10/12/12

SHEET NO.:

6 OF 49

FILE NAME: ODGECBPATR1.indd

PRINT

BACK TO  
T.O.C.

NEXT PAGE

FACILITIES  
MANAGEMENT  
OFFICE OF

FACILITIES PLANNING,  
DESIGN AND  
CONSTRUCTION

INTERIOR FINISH STANDARDS  
FOR

1400 Hermann Pressler Dr.  
T.BoonePickensAcademicTower  
(PAT)

SHEET TITLE:

PAT  
FINISH SCHEDULE  
6/11

LAST UPDATE:

10/12/12

SHEET NO.:

7 OF 49

FILE NAME: ODGECBPATR1.indd

PRINT

BACK TO  
T.O.C.

NEXT PAGE

FACILITIES  
MANAGEMENT  
OFFICE OF

FACILITIES PLANNING,  
DESIGN AND  
CONSTRUCTION

INTERIOR FINISH STANDARDS  
FOR

1400 Hermann Pressler Dr.  
T.BoonePickensAcademicTower  
(PAT)

SHEET TITLE:

PAT  
FINISH SCHEDULE  
7/11

LAST UPDATE:

10/12/12

SHEET NO.:

8 OF 49

FILE NAME: ODGECBPATR1.indd

PRINT

BACK TO  
T.O.C.

NEXT PAGE



FACILITIES  
MANAGEMENT  
OFFICE OF

FACILITIES PLANNING,  
DESIGN AND  
CONSTRUCTION

INTERIOR FINISH STANDARDS  
FOR

1400 Hermann Pressler Dr.  
T.BoonePickensAcademicTower  
(PAT)

SHEET TITLE:

PAT  
FINISH SCHEDULE  
8/11

LAST UPDATE:

10/12/12

SHEET NO.:

9 OF 49

FILE NAME: ODGECBPATR1.indd

PRINT

BACK TO  
T.O.C.

NEXT PAGE

**FACILITIES  
MANAGEMENT  
OFFICE OF**

**FACILITIES PLANNING,  
DESIGN AND  
CONSTRUCTION**

**INTERIOR FINISH STANDARDS  
FOR**

**1400 Hermann Pressler Dr.  
T.BoonePickensAcademicTower  
(PAT)**

**SHEET TITLE:**

**PAT  
FINISH SCHEDULE  
9/11**

**LAST UPDATE:**

**10/12/12**

**SHEET NO.:**

**10 OF 49**

FILE NAME: ODGECBPATR1.indd

PRINT

BACK TO  
T.O.C.

NEXT PAGE

FACILITIES  
MANAGEMENT  
OFFICE OF

FACILITIES PLANNING,  
DESIGN AND  
CONSTRUCTION

INTERIOR FINISH STANDARDS  
FOR

1400 Hermann Pressler Dr.  
T.BoonePickensAcademicTower  
(PAT)

SHEET TITLE:

PAT  
FINISH SCHEDULE  
10/11

LAST UPDATE:

10/12/12

SHEET NO.:

11 OF 49

FILE NAME: ODGECBPATR1.indd

PRINT

BACK TO  
T.O.C.

NEXT PAGE

FACILITIES  
MANAGEMENT  
OFFICE OF

FACILITIES PLANNING,  
DESIGN AND  
CONSTRUCTION

INTERIOR FINISH STANDARDS  
FOR

1400 Hermann Pressler Dr.  
T.BoonePickensAcademicTower  
(PAT)

SHEET TITLE:

PAT  
FINISH SCHEDULE  
11/11

LAST UPDATE:

10/12/12

SHEET NO.:

12 OF 49

FILE NAME: ODGECBPATR1.indd

PRINT

BACK TO  
T.O.C.

NEXT PAGE

# FINISH LEGEND

## CEILING

- ACT-2 Armstrong World Industries, Inc.  
No.: 770 Cortega  
Color: White  
Finish: Smooth Texture  
Size: 2'x2'x5/8"
- ACT-26 Armstrong World Industries, Inc. (At DLC)  
No.: 1828 Fine Fissured Tegular  
Color: White  
Finish: Medium Texture  
Size: 2'x2'x5/8"
- PT-79 Benjamin Moore  
Interior Ready Mix White

## DOORS/ FRAMES

- PL-38 Nevamar  
No.: WA0002E, Tangier Anigre
- AF-3 RACO Altura  
Paint: Duranar XL No. UC51568 XL  
Color: Champagne Gold

## WALLS

- PT-55 Benjamin Moore (Field)  
Color: OC-4, Brandy Cream  
Finish: Satin
- PT-59 Benjamin Moore (Accent)  
Color: 719 Hemlock  
Finish: Satin
- FWC-8 Knoll Textiles "Tailor Made"  
Color: W133/6 Sage  
(Fabric Wrap Panels)
- FWC-9 Knoll Textiles "Tailor Made"  
Color: W133/2 Muslin  
(Fabric Wrap Panels)
- AWT-15 Guilford of Maine (At DLC)  
Pattern: Lido #2858  
Color:#013 Green Bay

## FLOORS/ BASE

- CPT-34 Interface "Nature Trails"  
Color: Custom #172273  
04/2011 Changed Yarn System,  
New #176614
- VCT-15 Mannington "Inspirations"  
Color:417 Cream Tones  
Size:12" X 12"
- RB-6 Johnsonite 4" Rubber Cove Base  
Color: Fawn

## WINDOW TREATMENTS

- WS-7 Solarfective  
Color: #502 White Beige  
(Std. Window Shade)

## OPERABLE PARTITIONS

- FWC-11 Wolf Gordon Fabric Wallcovering  
No.: #WG3584686

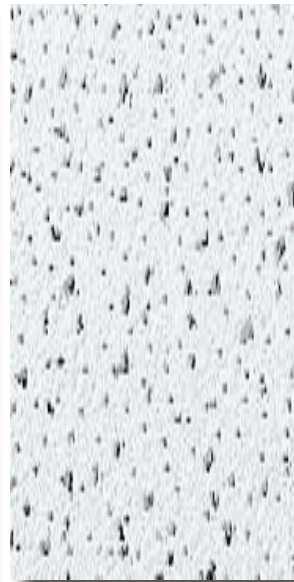
## MILLWORK

- PL-29 Nevamar No. MR2005T, Taupe Matrix  
(Table Tops at DLC)
- SSM-9 Corian, Evergreen
- SSM-23 Corian, Gravel (At DLC)

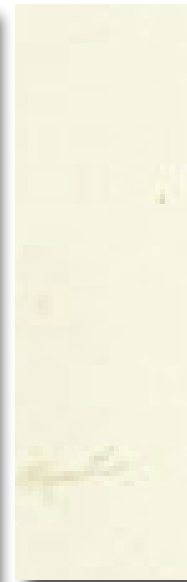
Important Disclaimer: Colors presented in this file are provided for general color information only. Due to many different monitor settings on individual computers and different light sources - these finishes may appear from actual color. Actual samples are available from the FPDC/FPS library located on the 8th floor of FHB or may be ordered directly from manufacturers.



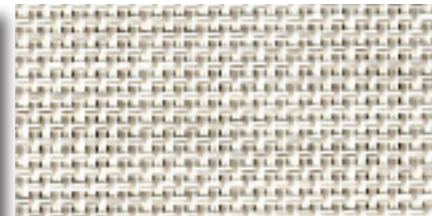
ACT-2



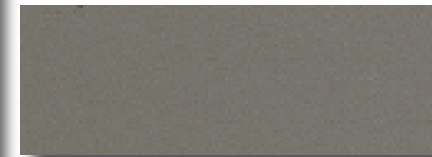
ACT-26



PT-79



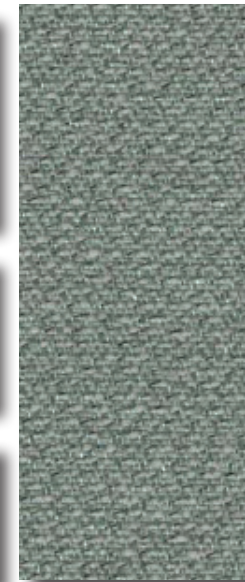
WS-7



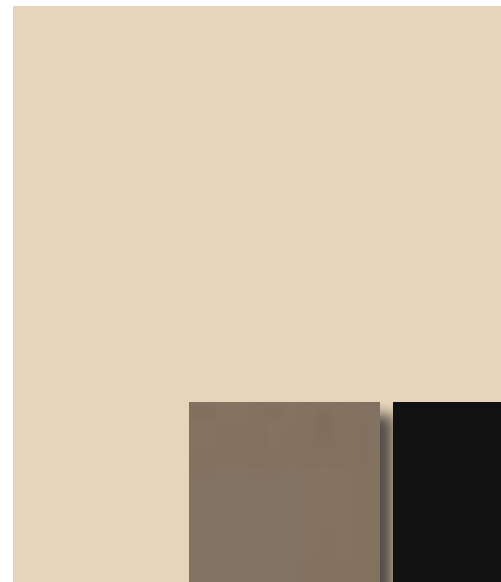
AF-3



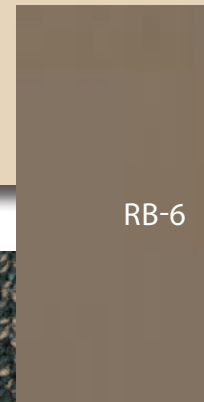
FWC-11



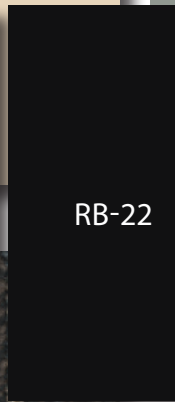
AWT-15



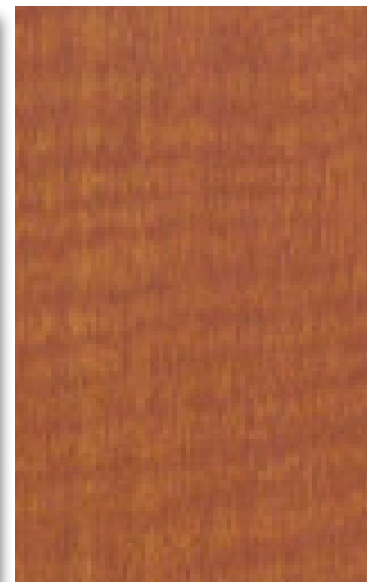
PT-55



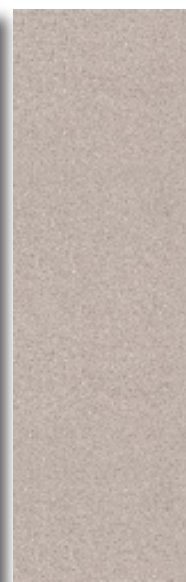
RB-6



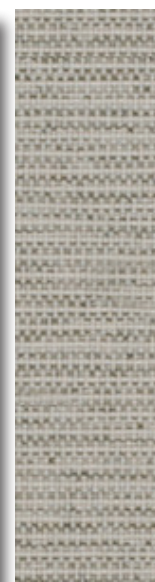
RB-22



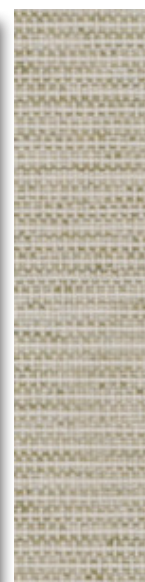
PL-38



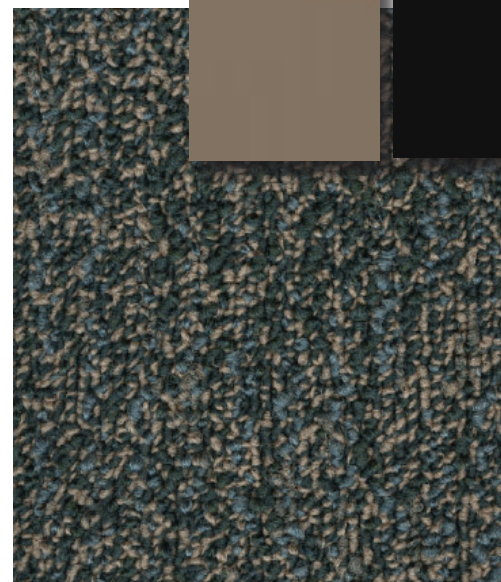
PL-29



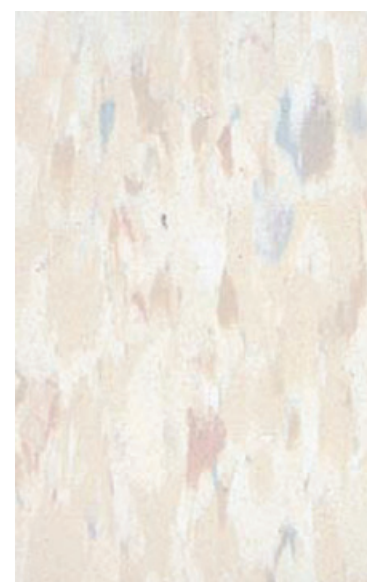
FWC-8



FWC-9



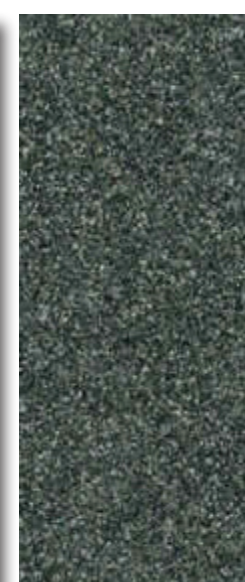
CPT-34



VCT-15



SSM-23



SSM-9

## FACILITIES MANAGEMENT OFFICE OF

FACILITIES PLANNING,  
DESIGN AND  
CONSTRUCTION

INTERIOR FINISH STANDARDS  
FOR

1400 Hermann Pressler Dr.  
T.BoonePickensAcademicTower  
(PAT)

SHEET TITLE:

## PAT CONFERENCE SPACE LEVELS 2 & 3

EDUCATION/TRAINING ROOMS AND  
DISTANCE LEARNING CENTER (DLC)

LAST UPDATE:

10/12/12

SHEET NO.:

13 OF 49

FILE NAME: ODGECBPATR1.indd

PRINT

BACK TO  
T.O.C.

NEXT PAGE

# FINISH LEGEND

## CEILING

- ACT-2 Armstrong World Industries, Inc.  
No.: 770 Cortega  
Color: White  
Finish: Smooth Texture  
Size: 2'x2'x5/8"
- PT-79 Benjamin Moore  
Interior Ready Mix White

## DOORS/ FRAMES

- PL-38 Nevamar  
No.: WA0002E, Tangier Anigre
- AF-3 RACO Altura  
Paint: Duranar XL No. UC51568 XL  
Color: Champagne Gold

## WALLS

- PT-55 Benjamin Moore (Field)  
Color: OC-4, Brandy Cream  
Finish: Satin
- FWC-8 Knoll Textiles "Tailor Made"  
Color: W133/6 Sage  
(Fabric Wrap Panels)
- FWC-9 Knoll Textiles "Tailor Made"  
Color: W133/2 Muslin  
(Fabric Wrap Panels)

## FLOORS/ BASE

- CPT-34 Interface "Nature Trails"  
Color: Custom #172273  
04/2011 Changed Yarn System,  
New #176614
- VCT-15 Mannington "Inspirations"  
Color: 417 Cream Tones  
Size: 12" X 12"
- RB-6 Johnsonite 4" Rubber Cove Base  
Color: Fawn

## OPERABLE PARTITIONS

- FWC-8 Knoll Textiles "Tailor Made"  
Color: W133/6 Sage
- FWC-9 Knoll Textiles "Tailor Made"  
Color: W133/2 Muslin

## MILLWORK

- SSM-9 Corian, Evergreen
- PL-38 Nevamar  
No.: WA0002E, Tangier Anigre

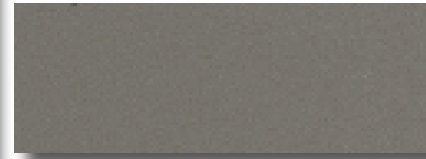
Important Disclaimer: Colors presented in this file are provided for general color information only. Due to many different monitor settings on individual computers and different light sources - these finishes may appear from actual color. Actual samples are available from the FPDC/FPS library located on the 8th floor of FHB or may be ordered directly from manufacturers.



ACT-2



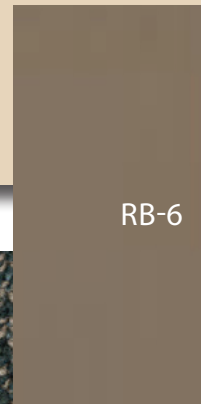
PT-79



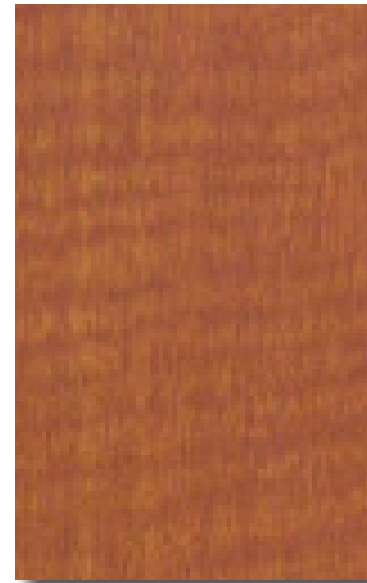
AF-3



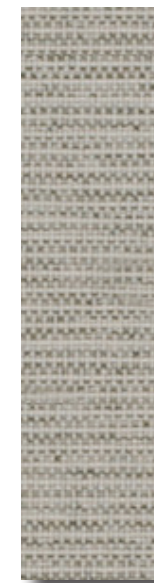
PT-55



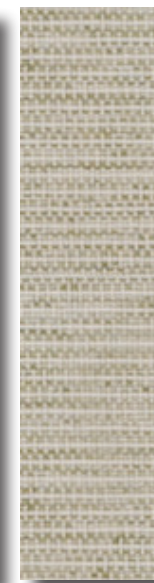
RB-6



PL-38



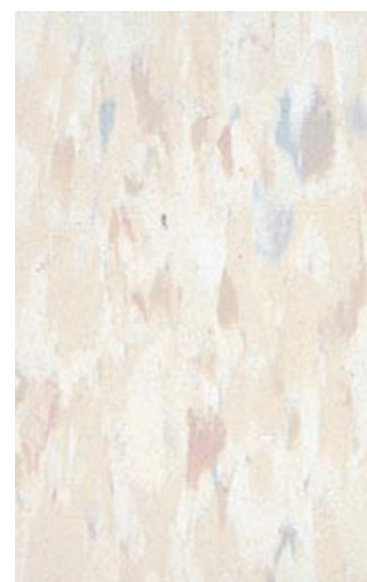
FWC-8



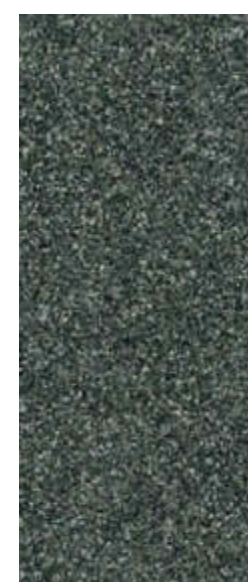
FWC-9



CPT-34



VCT-15



SSM-9

STW-9

## FACILITIES MANAGEMENT OFFICE OF

FACILITIES PLANNING,  
DESIGN AND  
CONSTRUCTION

## INTERIOR FINISH STANDARDS FOR

1400 Hermann Pressler Dr.  
T. Boone Pickens Academic Tower  
(PAT)

SHEET TITLE:

## PAT CONFERENCE SPACE LEVEL 3 MULTI-PURPOSE ROOMS

LAST UPDATE:

10/12/12

SHEET NO.:

14 OF 49

FILE NAME: ODGECBPATR1.indd

PRINT

BACK TO  
T.O.C.

NEXT PAGE

# FINISH LEGEND

## CEILING

ACT-2 Armstrong World Industries, Inc.  
 No.: 770 Cortega  
 Color: White  
 Finish: Medium Texture  
 Size: 2'x2'x5/8"

## DOORS/ FRAMES

PL-38 Nevamar  
 No.: WA0002E, Tangier Anigre

AF-3 RACO Altura  
 Paint: Duranar XL No. UC51568 XL  
 Color: Champagne Gold

## WALLS

PT-55 Benjamin Moore (Field)  
 Color: OC-4, Brandy Cream  
 Finish: Satin

## FLOORS/ BASE

CPT-37 Lees "Heartland", 18"x18" Tile  
 No.: D8442  
 Color: 307, Capri

RB-6 Johnsonite 4"  
 Color: Fawn

## WINDOW TREATMENTS

WS-7 Solarfective  
 Color: #502 White Beige  
 (Std. Window Shade)

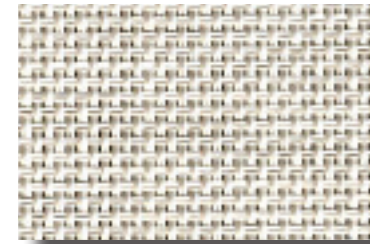
## OPERABLE PARTITIONS

FWC-11 Wolf Gordon Fabric Wallcovering  
 No.: #WG3584686

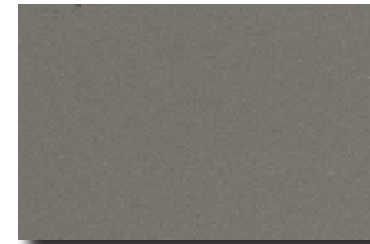
Important Disclaimer: Colors presented in this file are provided for general color information only. Due to many different monitor settings on individual computers and different light sources - these finishes may appear from actual color. Actual samples are available from the FPDC/FPS library located on the 8th floor of FHB or may be ordered directly from manufacturers.



ACT-2



WS-7



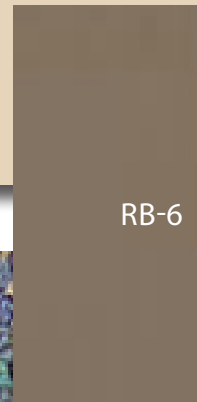
AF-3



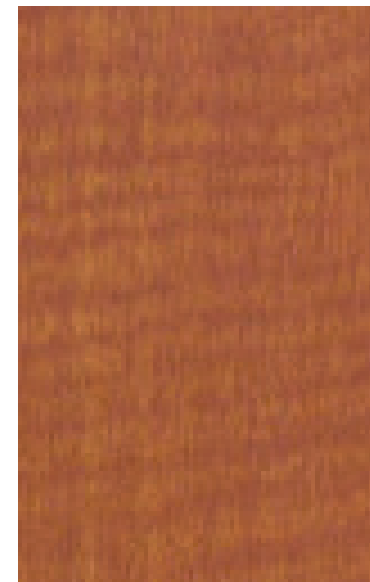
FWC-11



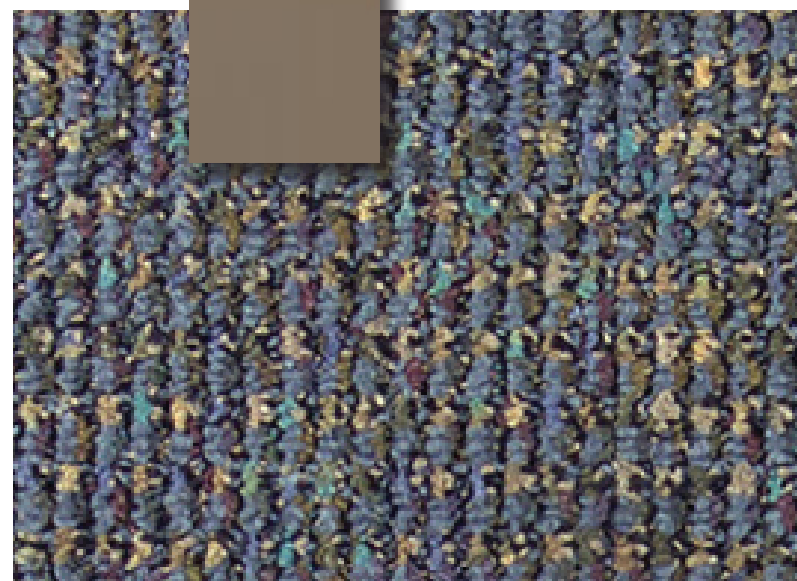
PT-55



RB-6



PL-38



CPT-37

## FACILITIES MANAGEMENT OFFICE OF

FACILITIES PLANNING,  
 DESIGN AND  
 CONSTRUCTION

## INTERIOR FINISH STANDARDS FOR

1400 Hermann Pressler Dr.  
 T.BoonePickensAcademicTower  
 (PAT)

SHEET TITLE:

## PAT CONFERENCE SPACE DEPARTMENTAL LEVELS 4-13

LAST UPDATE:

10/12/12

SHEET NO.:

15 OF 49

FILE NAME: ODGECBPATR1.indd

PRINT

BACK TO  
 T.O.C.

NEXT PAGE

# FINISH LEGEND

## CEILING

ACT-2 Armstrong World Industries, Inc.  
 No.: 770 Cortega  
 Color: White  
 Finish: Medium Texture  
 Size: 2'x2'x5/8"

Replacement for Cortega in some areas:

ACT-24 Armstrong World Industries, Inc.  
 No.: Ceramaguard #607  
 Color: White  
 Finish: Medium Texture  
 Size: 2'x2'x5/8"

## DOORS/ FRAMES

PL-38 Nevamar  
 No.: WA0002E, Tangier Anigre

AF-3 RACO Altura  
 Paint: Duranar XL No. UC51568 XL  
 Color: Champagne Gold

## WALLS

PT-55 Benjamin Moore (Field)  
 Color: OC-4, Brandy Cream  
 Finish: Satin

## FLOORS/ BASE

CPT-37 Lees "Heartland", 18"x18" Tile  
 No.: D8442  
 Color: 307, Capri

RB-6 Johnsonite 4"  
 Color: Fawn

## WINDOW TREATMENTS

WS-7 Solarfective  
 Color: #502 White Beige  
 (Std. Window Shade)

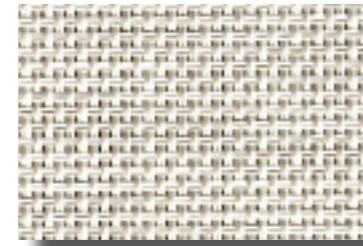
## OPERABLE PARTITIONS

FWC-11 Wolf Gordon Fabric Wallcovering  
 No.: #WG3584686

Important Disclaimer: Colors presented in this file are provided for general color information only. Due to many different monitor settings on individual computers and different light sources - these finishes may appear from actual color. Actual samples are available from the FPDC/FPS library located on the 8th floor of FHB or may be ordered directly from manufacturers.



ACT-2



WS-7



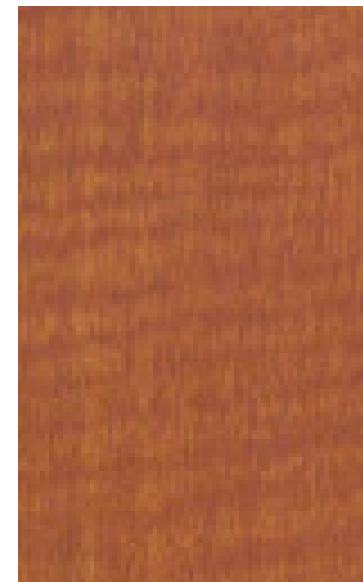
FWC-11



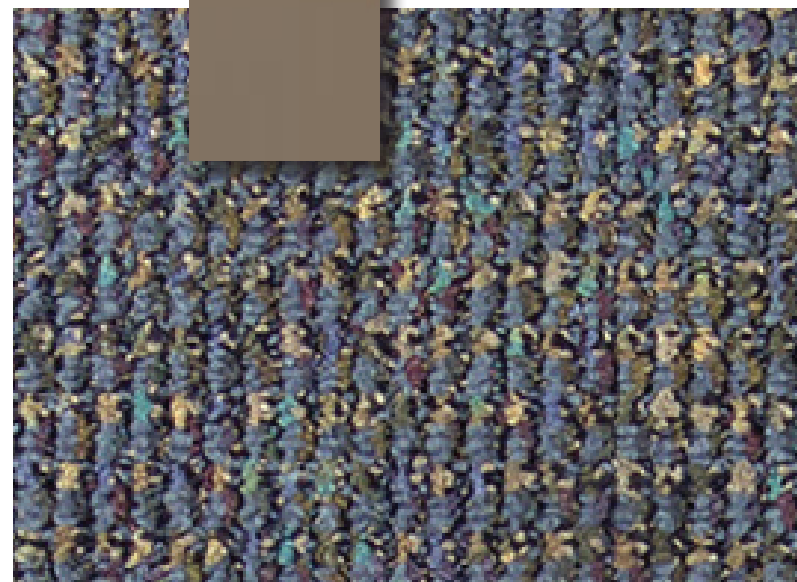
AF-3



PT-55



PL-38



RB-6

CPT-37



ACT-24

## FACILITIES MANAGEMENT OFFICE OF

FACILITIES PLANNING,  
 DESIGN AND  
 CONSTRUCTION

## INTERIOR FINISH STANDARDS FOR

1400 Hermann Pressler Dr.  
 T.BoonePickensAcademicTower  
 (PAT)

SHEET TITLE:

## PAT CONFERENCE SPACE DEPARTMENTAL LEVELS 14-19

LAST UPDATE:

10/12/12

SHEET NO.:

16 OF 49

FILE NAME: ODGECBPATR1.indd

PRINT

BACK TO  
 T.O.C.

NEXT PAGE



# FINISH LEGEND

## CEILING

ACT-2 Armstrong World Industries, Inc.  
 No.: 770 Cortega  
 Color: White  
 Finish: Smooth Texture  
 Size: 2'x2'x5/8"

Replacement for Cortega in some areas:

ACT-24 Armstrong World Industries, Inc.  
 No.: Ceramaguard #607  
 Color: White  
 Finish: Medium Texture  
 Size: 2'x2'x5/8"

## DOORS/ FRAMES

PL-38 Nevamar  
 No.: WA0002E, Tangier Anigre

AF-3 RACO Altura  
 Paint: Duranar XL No. UC51568 XL  
 Color: Champagne Gold

## WALLS

PT-55 Benjamin Moore (Field)  
 Color: OC-4, Brandy Cream  
 Finish: Satin

## FLOORS/ BASE

CPT-34 Interface "Nature Trails"  
 Color: Custom #172273  
 04/2011 Changed Yarn System,  
 New #176614

RB-6 Johnsonite 4"  
 Color: Fawn

## WINDOW TREATMENTS

WS-7 Solarfective  
 Color: #502 White Beige  
 (Std. Window Shade)

## ARCHITECTURAL WOODWORK

PL-38 Nevamar  
 No.: WA0002E, Tangier Anigre  
 SSM-23 Corian, Gravel

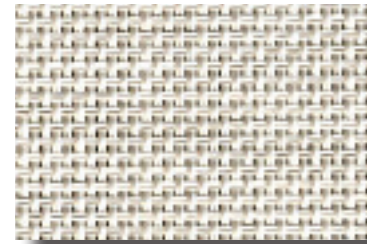
## OPERABLE PARTITIONS

FWC-11 Wolf Gordon Fabric Wallcovering  
 No.: #WG3584686

Important Disclaimer: Colors presented in this file are provided for general color information only. Due to many different monitor settings on individual computers and different light sources - these finishes may appear from actual color. Actual samples are available from the FPDC/FPS library located on the 8th floor of FHB or may be ordered directly from manufacturers.



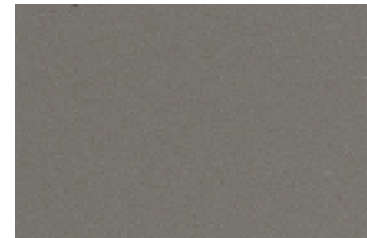
ACT-2



WS-7



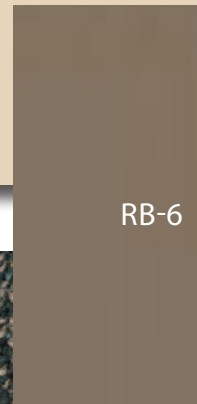
FWC-11



AF-3



PT-55



RB-6



PL-38



SSM-23



CPT-34



ACT-24

## FACILITIES MANAGEMENT OFFICE OF

FACILITIES PLANNING,  
 DESIGN AND  
 CONSTRUCTION

## INTERIOR FINISH STANDARDS FOR

1400 Hermann Pressler Dr.  
 T.BoonePickensAcademicTower  
 (PAT)

SHEET TITLE:

## PAT CONFERENCE SPACE DEPARTMENTAL LEVEL 18 EVP SUITE, LEVEL 20 EVP SUITES & GOVERNMENT RELATIONS

LAST UPDATE:

10/12/12

SHEET NO.:

17 OF 49

FILE NAME: ODGECBPATR1.indd

PRINT

BACK TO  
 T.O.C.

NEXT PAGE

# FINISH LEGEND

## CEILING

ACT-2 Armstrong World Industries, Inc.  
 No.: 770 Cortega  
 Color: White  
 Finish: Smooth Texture  
 Size: 2'x2'x5/8"

Replacement for Cortega in some areas:

ACT-24 Armstrong World Industries, Inc.  
 No.: Ceramaguard #607  
 Color: White  
 Finish: Medium Texture  
 Size: 2'x2'x5/8"

## DOORS/ FRAMES

PL-38 Nevamar  
 No.: WA0002E, Tangier Anigre

AF-3 RACO Altura  
 Paint: Duranar XL No. UC51568 XL  
 Color: Champagne Gold

## WALLS

PT-55 Benjamin Moore (Field)  
 Color: OC-4, Brandy Cream  
 Finish: Satin

## FLOORS/ BASE

CPT-34 Interface "Nature Trails"  
 Color: Custom #172273  
 04/2011 Changed Yarn System,  
 New #176614

RB-6 Johnsonite 4"  
 Color: Fawn

## WINDOW TREATMENTS

WS-7 Solarfective  
 Color: #502 White Beige  
 (Std. Window Shade)

## ARCHITECTURAL WOODWORK

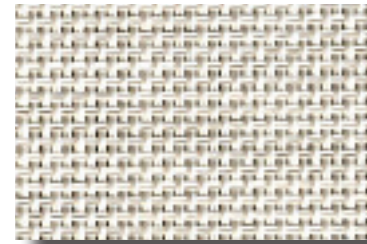
PL-38 Nevamar  
 No.: WA0002E, Tangier Anigre

PL-72 Nevamar  
 No.: W8325T, Sovereign Cherry

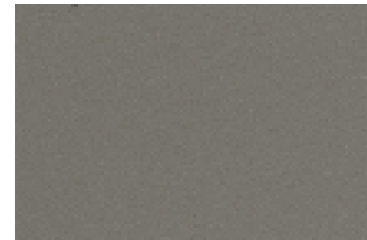
Important Disclaimer: Colors presented in this file are provided for general color information only. Due to many different monitor settings on individual computers and different light sources - these finishes may appear from actual color. Actual samples are available from the FPDC/FPS library located on the 8th floor of FHB or may be ordered directly from manufacturers.



ACT-2



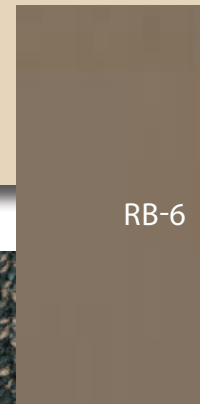
WS-7



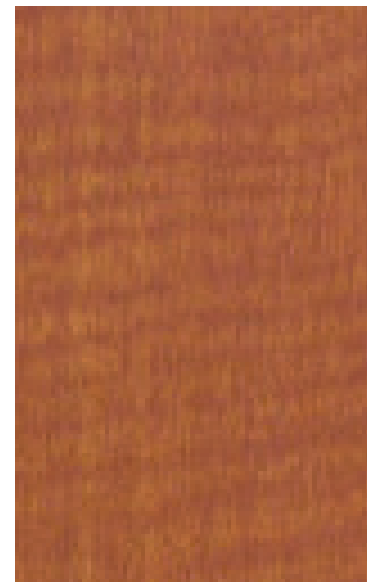
AF-3



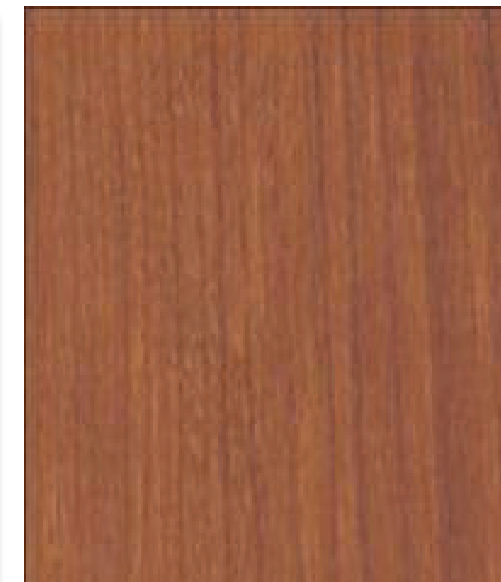
PT-55



RB-6



PL-38



PL-72



CPT-34



ACT-24

## FACILITIES MANAGEMENT OFFICE OF

FACILITIES PLANNING,  
 DESIGN AND  
 CONSTRUCTION

## INTERIOR FINISH STANDARDS FOR

1400 Hermann Pressler Dr.  
 T.BoonePickensAcademicTower  
 (PAT)

SHEET TITLE:

## PAT CONFERENCE SPACE EXECUTIVE LEVELS 18 EVP & 20 EVP SUITES

LAST UPDATE:

10/12/12

SHEET NO.:

18 OF 49

FILE NAME: ODGECBPATR1.indd

PRINT

BACK TO  
 T.O.C.

NEXT PAGE

# FINISH LEGEND

## CEILING

- ACT-2 Armstrong World Industries, Inc.  
No.: 770 Cortega  
Color: White  
Finish: Smooth Texture  
Size: 2'x2'x5/8"
- PT-79 Benjamin Moore  
Interior Ready Mix White

## DOORS/ FRAMES

- PL-38 Nevamar  
No.: WA0002E, Tangier Anigre
- PT-56 Benjamin Moore No. AC-32 Prismo  
Dunes

## WALLS

- PT-55 Benjamin Moore (Field)  
Color: OC-4, Brandy Cream  
Finish: Satin

## AT SOUTH WALL:

- FWC-11 Wolf Gordon Fabric Wallcovering  
No.: #WG3584686

## FLOORS/ BASE

- CPT-34 Interface "Nature Trails" 18"x18"  
Tile  
Color: Custom #172273  
04/2011 Changed Yarn System,  
New #176614
- RB-6 Johnsonite 4"  
Color: Fawn

## ARCHITECTURAL WOODWORK

- PL-38 Nevamar  
No.: WA0002E, Tangier Anigre
- SSM-23 Corian, Gravel

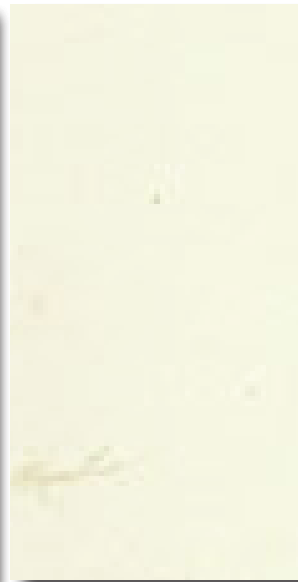
## OPERABLE PARTITIONS

- FWC-11 Wolf Gordon Fabric Wallcovering  
No.: #WG3584686

Important Disclaimer: Colors presented in this file are provided for general color information only. Due to many different monitor settings on individual computers and different light sources - these finishes may appear from actual color. Actual samples are available from the FPDC/FPS library located on the 8Th floor of FHB or may be ordered directly from manufacturers.



ACT-2



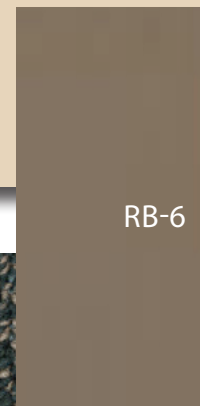
PT-79



FWC-11



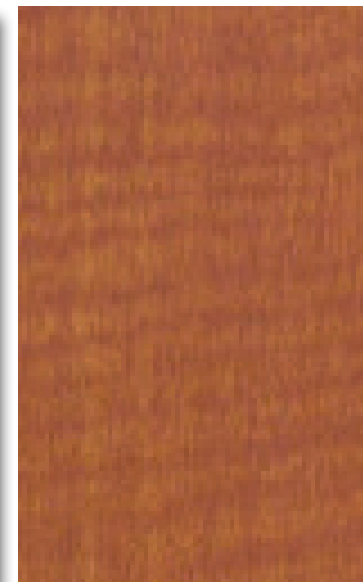
PT-55



RB-6



PT-56



PL-38



SSM-23



CPT-34

## FACILITIES MANAGEMENT OFFICE OF

FACILITIES PLANNING,  
DESIGN AND  
CONSTRUCTION

INTERIOR FINISH STANDARDS  
FOR

1400 Hermann Pressler Dr.  
T.BoonePickensAcademicTower  
(PAT)

SHEET TITLE:

**PAT**  
**CONFERENCE SPACE**  
**WEISS REPLACEMENT**  
**LEVEL 20**

LAST UPDATE:

**10/12/12**

SHEET NO.:

**19** OF **49**

FILE NAME: ODGECBPATR1.indd

PRINT

BACK TO  
T.O.C.

NEXT PAGE

# FINISH LEGEND

## CEILING

- ACT-2 Armstrong World Industries, Inc.  
No.: 770 Cortega  
Color: White  
Finish: Smooth Texture  
Size: 2'x2'x5/8"
- PT-79 Benjamin Moore  
Interior Ready Mix White

## DOORS/ FRAMES

- PL-38 Nevamar  
No.: WA0002E, Tangier Anigre
- PT-56 Benjamin Moore No. AC-32 Prismo  
Dunes

## WALLS

- PT-55 Benjamin Moore (Field)  
Color: OC-4, Brandy Cream  
Finish: Satin
- FWC-11 Wolf Gordon Fabric Wallcovering  
No.: #WG3584686

## FLOORS/ BASE

- CPT-34 Interface "Nature Trails"  
Color: Custom #172273  
04/2011 Changed Yarn System,  
New #176614
- RB-6 Johnsonite 4"  
Color: Fawn

## ARCHITECTURAL WOODWORK

- PL-38 Nevamar  
No.: WA0002E, Tangier Anigre
- SSM-23 Corian, Gravel



ACT-2



PT-79



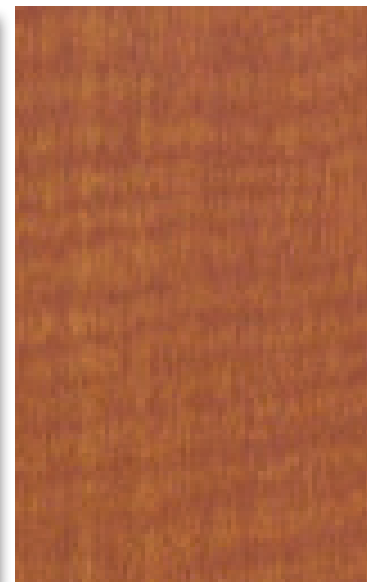
FWC-11



PT-55



PT-56



PL-38



SSM-23



CPT-34

Important Disclaimer: Colors presented in this file are provided for general color information only. Due to many different monitor settings on individual computers and different light sources - these finishes may appear from actual color. Actual samples are available from the FPDC/FPS library located on the 8th floor of FHB or may be ordered directly from manufacturers.

## FACILITIES MANAGEMENT OFFICE OF

FACILITIES PLANNING,  
DESIGN AND  
CONSTRUCTION

INTERIOR FINISH STANDARDS  
FOR  
1400 Hermann Pressler Dr.  
T. Boone Pickens Academic Tower  
(PAT)

SHEET TITLE:

**PAT**  
**CONFERENCE SPACE**  
**SHIVERS REPLACEMENT**  
**LEVEL 20**

LAST UPDATE:

**10/12/12**

SHEET NO.:

**20** OF **49**

FILE NAME: ODGECBPATR1.indd

PRINT

BACK TO  
T.O.C.

NEXT PAGE

# FINISH LEGEND

## CEILING

ACT-2 Armstrong World Industries, Inc.  
 No.: 770 Cortega  
 Color: White  
 Finish: Medium Texture  
 Size: 2'x2'x5/8"

## DOORS/ FRAMES

PL-38 Nevamar  
 No.: WA0002E, Tangier Anigre

AF-3 RACO Altura  
 Paint: Duranar XL No. UC51568 XL  
 Color: Champagne Gold

## WALLS

PT-55 Benjamin Moore (Field)  
 Color: OC-4, Brandy Cream  
 Finish: Satin

PT-57 Benjamin Moore (Accent)  
 Color: 691, Dartmouth Green  
 Finish: Satin

PT-60 Benjamin Moore (Accent)  
 Color: 720, Bella Blue  
 Finish: Satin

PT-63 Benjamin Moore (Accent)  
 Color: 1413, Purple Haze  
 Finish: Satin

PT-81 Benjamin Moore (Accent)  
 Color: 839, Old Blue Jeans  
 Finish: Satin

## FLOORS/ BASE

CPT-37 Lees "Heartland", 18"x18" Tile  
 No.: D8442  
 Color: 307, Capri

RB-6 Johnsonite 4" Rubber Cove Base  
 Color: Fawn

## WALL & CORNER GUARDS

CG-13 Stainless Steel Corner Guard

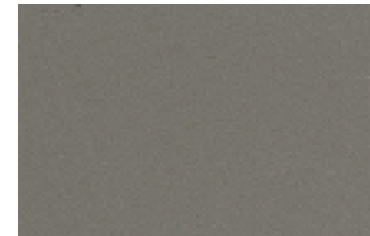
Important Disclaimer: Colors presented in this file are provided for general color information only. Due to many different monitor settings on individual computers and different light sources - these finishes may appear from actual color. Actual samples are available from the FPDC/FPS library located on the 8th floor of FHB or may be ordered directly from manufacturers.



ACT-2



CG - 13



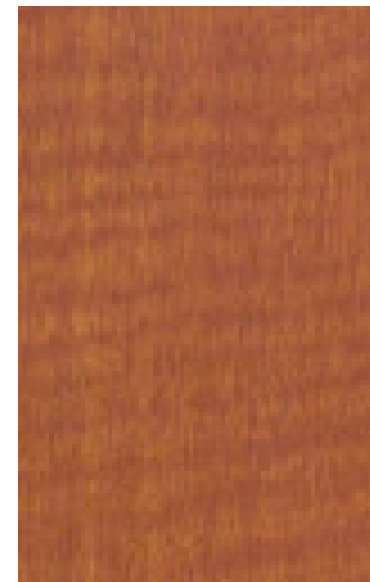
AF-3



PT-57



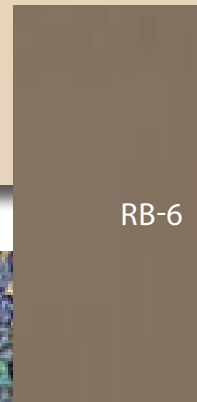
PT-55



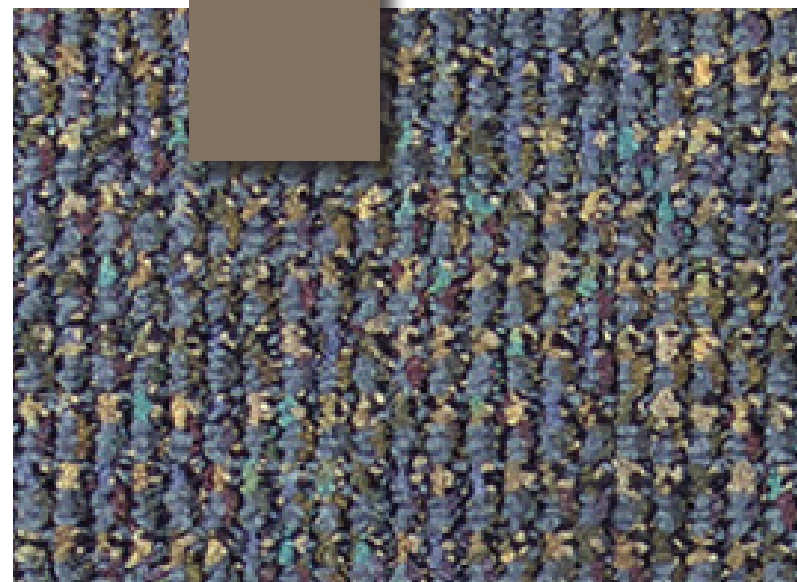
PL-38



PT-60



RB-6



CPT-37



PT-63



PT-81

## FACILITIES MANAGEMENT OFFICE OF

FACILITIES PLANNING,  
 DESIGN AND  
 CONSTRUCTION

## INTERIOR FINISH STANDARDS FOR

1400 Hermann Pressler Dr.  
 T.BoonePickensAcademicTower  
 (PAT)

SHEET TITLE:

## PAT PUBLIC CORRIDORS LEVELS 4 - 19 & 21

LAST UPDATE:

10/12/12

SHEET NO.:

7 OF 49

FILE NAME: ODGECBPATR1.indd

PRINT

BACK TO  
 T.O.C.

NEXT PAGE

# FINISH LEGEND

## CEILING

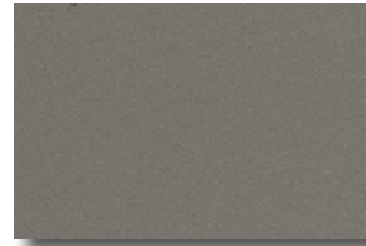
## DOORS/ FRAMES

PL-38 Nevamar  
No.: WA0002E, Tangier Anigre

AF-3 RACO Altura  
Paint: Duranar XL No. UC51568 XL  
Color: Champagne Gold

## WALLS

## FLOORS/ BASE



AF-3

FWC-10

Important Disclaimer: Colors presented in this file are provided for general color information only. Due to many different monitor settings on individual computers and different light sources - these finishes may appear from actual color. Actual samples are available from the FPDC/FPS library located on the 8th floor of FHB or may be ordered directly from manufacturers.

## FACILITIES MANAGEMENT OFFICE OF

FACILITIES PLANNING,  
DESIGN AND  
CONSTRUCTION

INTERIOR FINISH STANDARDS  
FOR

1400 Hermann Pressler Dr.  
T. Boone Pickens Academic Tower  
(PAT)

SHEET TITLE:

**PAT**  
**DINING FACILITIES**

LAST UPDATE:

**10/12/12**

SHEET NO.:

**8** OF **49**

FILE NAME: ODGECBPATR1.indd

PRINT

BACK TO  
T.O.C.

NEXT PAGE

# FINISH LEGEND

## CEILING

ACT-2 Armstrong World Industries, Inc.  
No.: 770 Cortega  
Color: White  
Finish: Medium Texture  
Size: 2'x2'x5/8"

## NOTE:

Also Painted Structure in some areas.

## DOORS/ FRAMES

PL-38 Nevamar  
No.: WA0002E, Tangier Anigre

PT-56 Benjamin Moore No. AC-32 Prismo  
Dunes

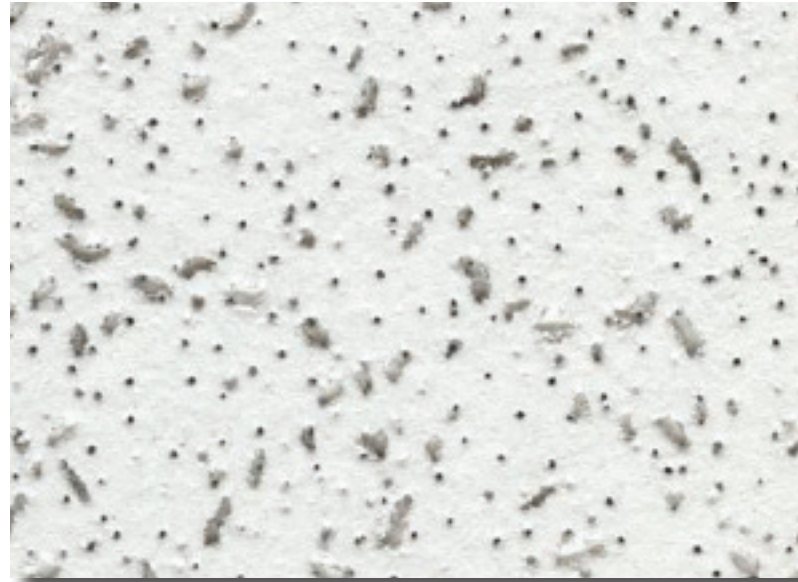
## WALLS

PT-55 Benjamin Moore (Field)  
Color: OC-4, Brandy Cream  
Finish: Satin

## FLOORS/ BASE

CONC-1 Sealed Concrete

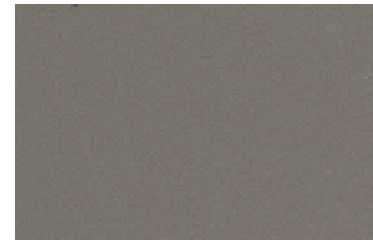
RB-6 Johnsonite 4"  
Color: Fawn



ACT-2



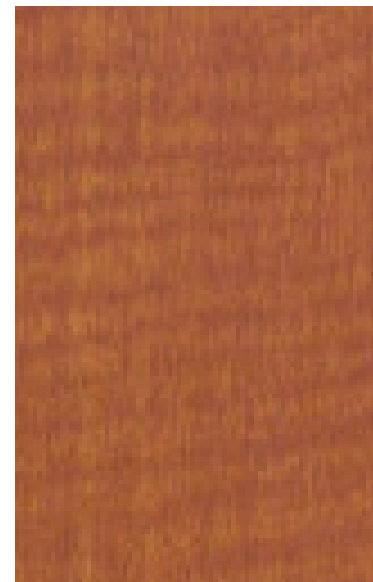
STAINLESS STEEL DOORS



AF-3



PT-55



PL-38



PT-56



RB-6

Important Disclaimer: Colors presented in this file are provided for general color information only. Due to many different monitor settings on individual computers and different light sources - these finishes may appear from actual color. Actual samples are available from the FPDC/FPS library located on the 8th floor of FHB or may be ordered directly from manufacturers.

## FACILITIES MANAGEMENT OFFICE OF

FACILITIES PLANNING,  
DESIGN AND  
CONSTRUCTION

INTERIOR FINISH STANDARDS  
FOR

1400 Hermann Pressler Dr.  
T. Boone Pickens Academic Tower  
(PAT)

SHEET TITLE:

**PAT**  
**DOCK & MAINTENANCE**  
**LEVEL 1**

LAST UPDATE:

**10/12/12**

SHEET NO.:

**9** OF **49**

FILE NAME: ODGECBPATR1.indd

PRINT

BACK TO  
T.O.C.

NEXT PAGE

# FINISH LEGEND

## CEILING

ACT-2 Armstrong World Industries, Inc.  
 No.: 770 Cortega  
 Color: White  
 Finish: Medium Texture  
 Size: 2x2'x5/8"

## DOORS/ FRAMES

PL-38 Nevamar  
 No.: WA0002E, Tangier Anigre

AF-3 Duranar XL No. UC51568 XL  
 Color: Chanpagne Gold

## WALLS

PT-55 Benjamin Moore (Field)  
 Color: OC-4, Brandy Cream  
 Finish: Satin

PT-57 Benjamin Moore (Accent)  
 Color: 691, Dartsmouth Green  
 Finish: Satin

PT-60 Benjamin Moore (Accent)  
 Color: 720, Bella Blue  
 Finish: Satin

PT-63 Benjamin Moore (Accent)  
 Color: 1413, Purple Haze  
 Finish: Satin

PT-66 Benjamin Moore (Accent)  
 Color: 1208, Tuscany  
 Finish: Satin

## FLOORS/ BASE

CPT-37 Lees "Heartland", 18"x18" Tile  
 No.: D8442  
 Color: 307, Capri

RB-6 Johnsonite 4"  
 Color: Fawn

## ARCHITECTURAL WOODWORK

PL-3 Formica (Vertical Surfaces)  
 No.: 744, Lacewood

PL-37 Wilsonart (Horizontal Surfaces)  
 No.: 4797060, Burnished Spruce

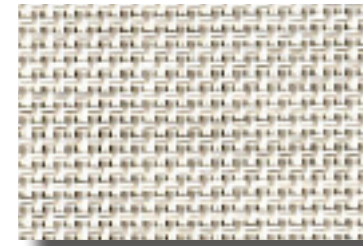
## WINDOW TREATMENTS

WC-9 Hunter Douglas Mini Blinds  
 Color: C065, Brushed Aluminum

Important Disclaimer: Colors presented in this file are provided for general color information only. Due to many different monitor settings on individual computers and different light sources - these finishes may appear from actual color. Actual samples are available from the FPDC/FPS library located on the 8th floor of FHB or may be ordered directly from manufacturers.



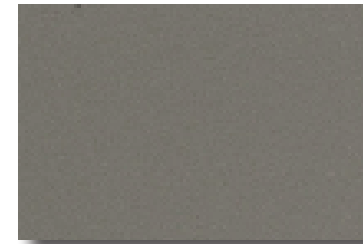
ACT-2



WC-9



PT-57



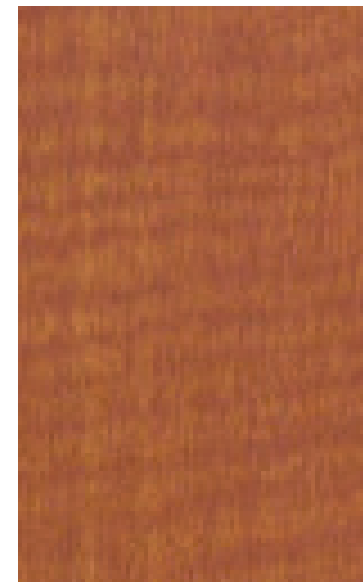
AF-3



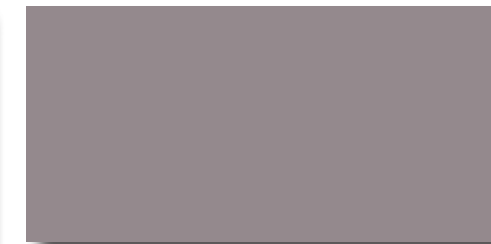
PT-60



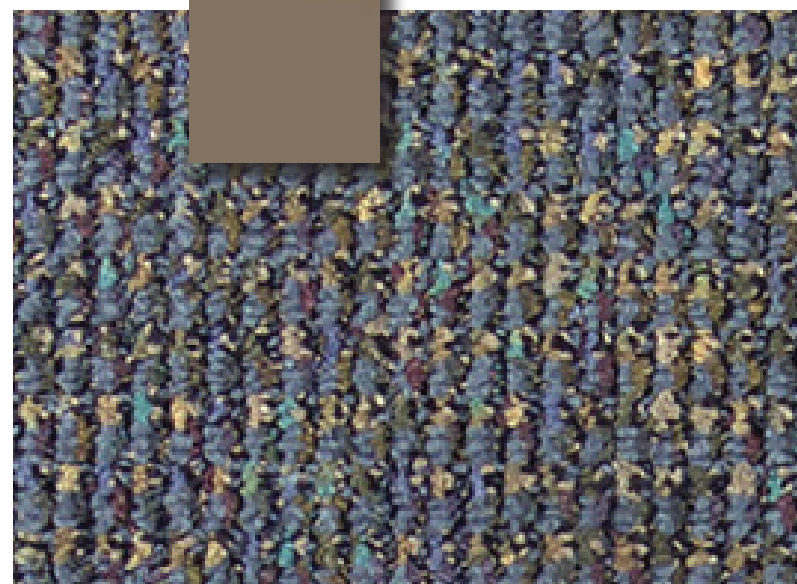
PT-55



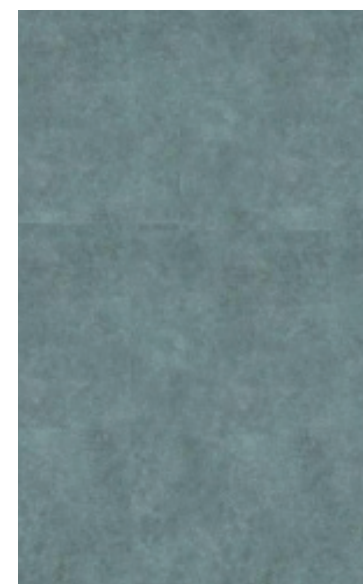
PL-37



PT-63



CPT-37



PL-37



PT-66



PL-3

## FACILITIES MANAGEMENT OFFICE OF

FACILITIES PLANNING,  
 DESIGN AND  
 CONSTRUCTION

INTERIOR FINISH STANDARDS  
 FOR

1400 Hermann Pressler Dr.  
 T.BoonePickensAcademicTower  
 (PAT)

SHEET TITLE:

## PAT RESEARCH MEDICAL LIBRARY LEVEL 21

LAST UPDATE:

10/12/12

SHEET NO.:

10 OF 49

FILE NAME: ODGECBPATR1.indd

PRINT

BACK TO  
 T.O.C.

NEXT PAGE



# FINISH LEGEND

## CEILING

ACT-2 Armstrong World Industries, Inc.  
No.: 770 Cortega  
Color: White  
Finish: Medium Texture  
Size: 2'x2'x5/8"

## DOORS/ FRAMES

PL-38 Nevamar  
No.: WA0002E, Tangier Anigre  
AF-3 RACO Altura  
Paint: Duranar XL No. UC51568 XL  
Color: Champagne Gold

## WALLS

PT-55 Benjamin Moore (Field)  
Color: OC-4, Brandy Cream  
Finish: Satin

## FLOORS/ BASE

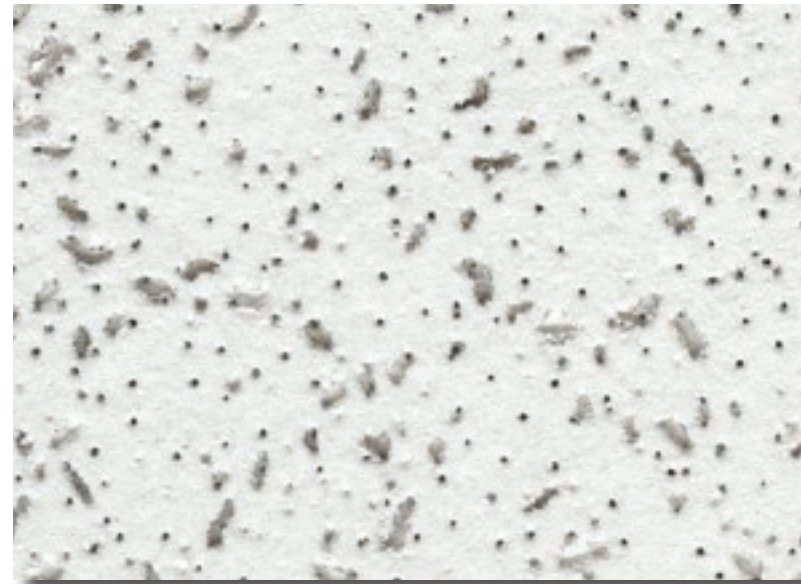
CPT-34 Interface "Nature Trails" 18"x18"  
Tile  
Color: Custom #172273  
RB-6 Johnsonite 4"  
Color: Fawn

## WINDOW TREATMENTS

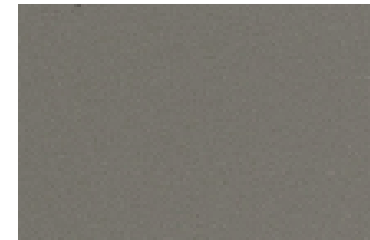
WC-13 Solarfective  
Color: Neutral Black-Out Shade

## ARCHITECTURAL WOODWORK

PL-38 Nevamar  
No.: WA0002E, Tangier Anigre



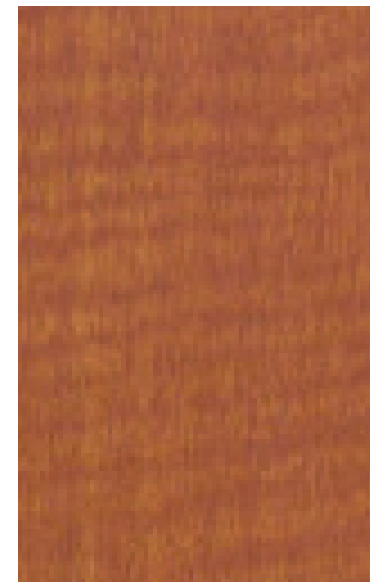
ACT-2



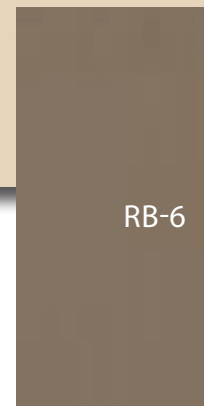
AF-3



PT-55



PL-38



RB-6

Important Disclaimer: Colors presented in this file are provided for general color information only. Due to many different monitor settings on individual computers and different light sources - these finishes may appear from actual color. Actual samples are available from the FPDC/FPS library located on the 8th floor of FHB or may be ordered directly from manufacturers.

## FACILITIES MANAGEMENT OFFICE OF

FACILITIES PLANNING,  
DESIGN AND  
CONSTRUCTION

## INTERIOR FINISH STANDARDS FOR

1400 Hermann Pressler Dr.  
T. Boone Pickens Academic Tower  
(PAT)

SHEET TITLE:

## PAT MAIN LOBBY LEVEL 1

LAST UPDATE:

10/12/12

SHEET NO.:

11 OF 49

FILE NAME: ODGECBPATR1.indd

PRINT

BACK TO  
T.O.C.

NEXT PAGE

# FINISH LEGEND

## CEILING

PT-55 Benjamin Moore  
 Color: OC-4, Brandy Cream  
 Finish: Satin

## DOORS/ FRAMES

PL-38 Nevamar  
 No.: WA0002E, Tangier Anigre

AF-3 RACO Altura  
 Paint: Duranar XL No. UC51568 XL  
 Color: Champagne Gold

## WALLS

PT-55 Benjamin Moore (Field)  
 Color: OC-4 Brandy Cream  
 Finish: Satin

PT-57 Benjamin Moore (Accent)  
 Color: 691, Dartsmouth Green  
 Finish: Satin

PT-60 Benjamin Moore (Accent)  
 Color: 720, Bella Blue  
 Finish: Satin

PT-63 Benjamin Moore (Accent)  
 Color: 1413, Purple Haze  
 Finish: Satin

PT-81 Benjamin Moore (Accent)  
 Color: 839, Old Blue Jeans  
 Finish: Satin

## FLOORS/ BASE

CPT-37 Lees "Heartland", 18"x18" Tile  
 No.: D8442  
 Color: 307, Capri  
 (Levels 4 - 21)

CPT-34 Interface "Nature Trails"  
 Custom Color: #172273  
 (Levels 2, 3, 20)

RB-6 Johnsonite 4" Rubber Cove Base  
 Color: Fawn

## WALL & CORNER GUARDS

CG-18 Stainless Steel Corner Guard

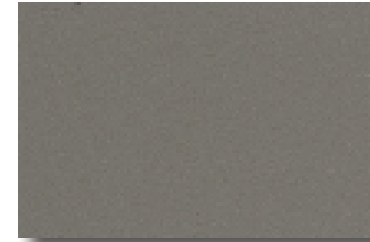
Important Disclaimer: Colors presented in this file are provided for general color information only. Due to many different monitor settings on individual computers and different light sources - these finishes may appear from actual color. Actual samples are available from the FPDC/FPS library located on the 8th floor of FHB or may be ordered directly from manufacturers.



ACT-2



CG-13



AF-3



PT-57



PT-60



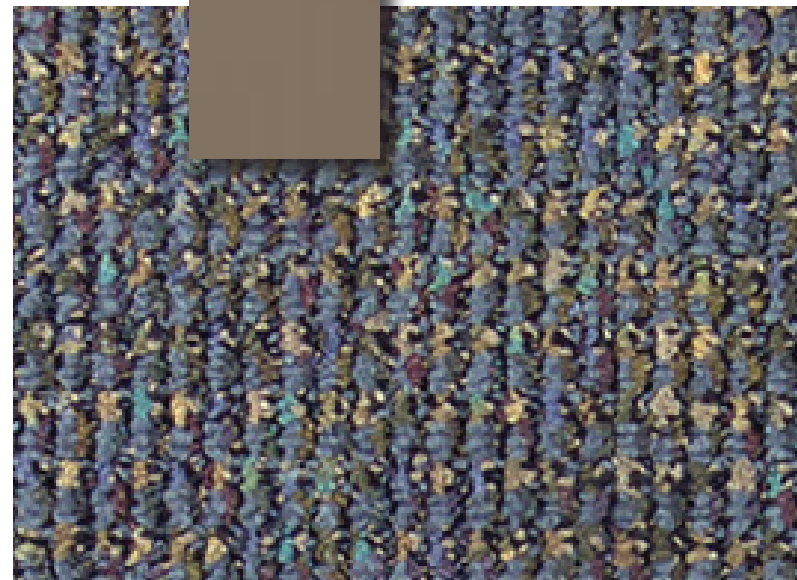
PT-55



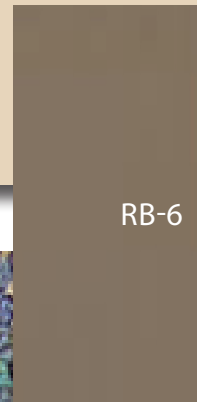
PL-38



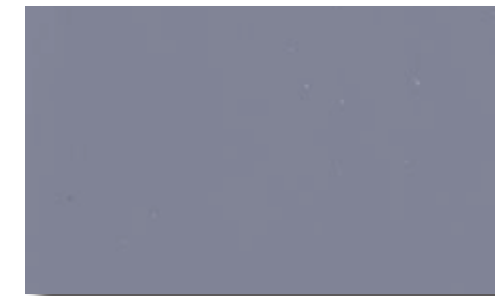
PT-63



CPT-37



RB-6



PT-81

## FACILITIES MANAGEMENT OFFICE OF

FACILITIES PLANNING,  
 DESIGN AND  
 CONSTRUCTION

INTERIOR FINISH STANDARDS  
 FOR

1400 Hermann Pressler Dr.  
 T.BoonePickensAcademicTower  
 (PAT)

SHEET TITLE:

**PAT**  
**ELEVATOR LOBBIES**  
**LEVELS 2-21**

LAST UPDATE:

**10/12/12**

SHEET NO.:

**12** OF **49**

FILE NAME: ODGECBPATR1.indd

PRINT

BACK TO  
 T.O.C.

NEXT PAGE

# FINISH LEGEND

## CEILING

ACT-2 Armstrong World Industries, Inc.  
 No.: 770 Cortega  
 Color: White  
 Finish: Medium Texture  
 Size: 2'x2'x5/8"

## DOORS/ FRAMES

PT-83 Benjamin Moore (Elevator Doors)  
 Color: Shaker Beige #HC-45

AF-3 RACO Altura  
 Paint: Duranar XL No. UC51568 XL  
 Color: Champagne Gold

## WALLS

PT-55 Benjamin Moore (Field)  
 Color: OC-4 Brandy Cream  
 Finish: Satin

PT-57 Benjamin Moore (Accent)  
 Color: 691, Dartmouth Green  
 Finish: Satin

PT-60 Benjamin Moore (Accent)  
 Color: 720, Bella Blue  
 Finish: Satin

PT-63 Benjamin Moore (Accent)  
 Color: 1413, Purple Haze  
 Finish: Satin

PT-81 Benjamin Moore (Accent)  
 Color: 839, Old Blue Jeans  
 Finish: Satin

## FLOORS/ BASE

CPT-37 Lees "Heartland", 18"x18" Tile  
 No.: D8442  
 Color: 307, Capri

RB-6 Johnsonite 4"  
 Color: Fawn

## WINDOW TREATMENTS

WS-7 Solarfective  
 5% Translucence  
 Color: White-Beige #502

### REPLACEMENT SHADE FOR LEVELS 14-19:

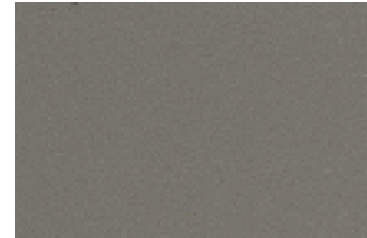
WS-8 Solarfective  
 3% Translucence  
 Color: P13 Oyster/Beige

BWS-4 Solarfective  
 Blackout Window Shade  
 Color: Fawn

Important Disclaimer: Colors presented in this file are provided for general color information only. Due to many different monitor settings on individual computers and different light sources - these finishes may appear from actual color. Actual samples are available from the FPDC/FPS library located on the 8th floor of FHB or may be ordered directly from manufacturers.



ACT-2



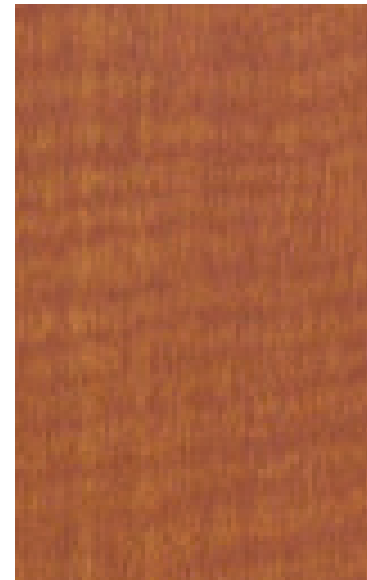
AF-3



PT-57



PT-55



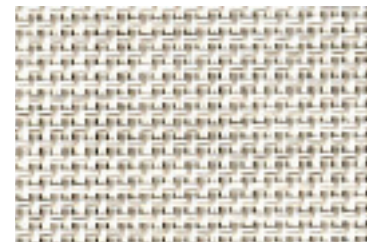
PL-38



PT-60



CPT-37



WC-13



PT-63



PT-81

## FACILITIES MANAGEMENT OFFICE OF

FACILITIES PLANNING,  
 DESIGN AND  
 CONSTRUCTION

INTERIOR FINISH STANDARDS  
 FOR

1400 Hermann Pressler Dr.  
 T.BoonePickensAcademicTower  
 (PAT)

SHEET TITLE:

**PAT**  
**OFFICE SPACE**  
**LEVELS 4-21**  
 (EXCEPT FOR PRESIDENT'S SUITE)

LAST UPDATE:

**10/12/12**

SHEET NO.:

**13** OF **49**

FILE NAME: ODGECBPATR1.indd

PRINT

BACK TO  
 T.O.C.

NEXT PAGE

# FINISH LEGEND

## CEILING

ACT-2 Armstrong World Industries, Inc.  
No.: 770 Cortega  
Color: White  
Finish: Medium Texture  
Size: 2'x2'x5/8"

## NOTE:

Also Painted Structure in some areas.

## DOORS/ FRAMES

PL-38 Nevamar  
No.: WA0002E, Tangier Anigre  
Textured

AF-3 RACO Altura  
Paint: Duranar XL No. UC51568 XL  
Color: Champagne Gold

## WALLS

PT-55 Benjamin Moore (Field)  
Color: OC-4, Brandy Cream  
Finish: Satin

## FLOORS/ BASE

CONC-1 Sealed Concrete

RB-6 Johnsonite 4"  
Color: Fawn



ACT-2



AF-3



PT-55



PL-38



RB-6

Important Disclaimer: Colors presented in this file are provided for general color information only. Due to many different monitor settings on individual computers and different light sources - these finishes may appear from actual color. Actual samples are available from the FPDC/FPS library located on the 8th floor of FHB or may be ordered directly from manufacturers.

## FACILITIES MANAGEMENT OFFICE OF

FACILITIES PLANNING,  
DESIGN AND  
CONSTRUCTION

## INTERIOR FINISH STANDARDS FOR

1400 Hermann Pressler Dr.  
T. Boone Pickens Academic Tower  
(PAT)

SHEET TITLE:

## PAT STAIRWELLS

LAST UPDATE:

10/12/12

SHEET NO.:

14 OF 49

FILE NAME: ODGECBPATR1.indd

PRINT

BACK TO  
T.O.C.

NEXT PAGE

# FINISH LEGEND

## CEILING

ACT-2 Armstrong World Industries, Inc.  
No.: 770 Cortega  
Color: White  
Finish: Medium Texture  
Size: 2x2'x5/8"

## DOORS/ FRAMES

PL-38 Nevamar  
No.: WA0002E, Tangier Anigre

AF-3 Raco "Classic", Anodized Aluminum  
Color: Clear Coat

## WALLS

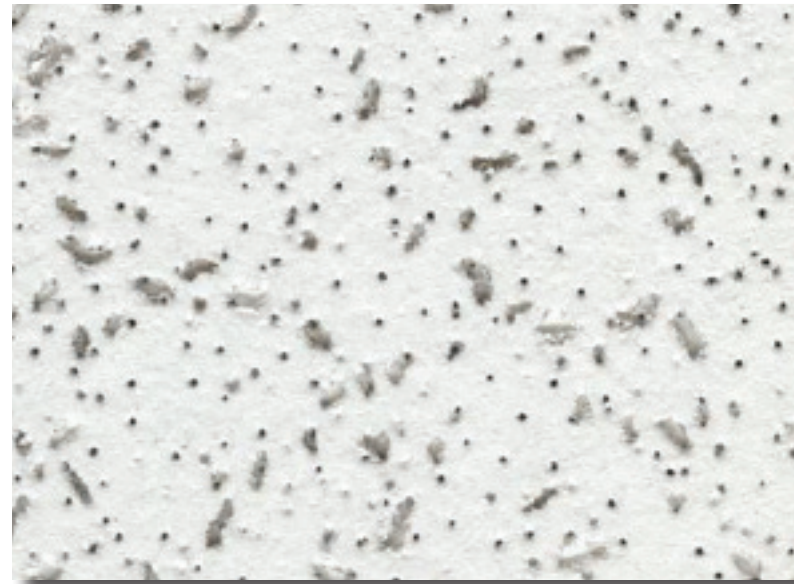
PT-55 Benjamin Moore (Field)  
Color: OC-4, Brandy Cream  
Finish: Satin

## FLOORS/ BASE

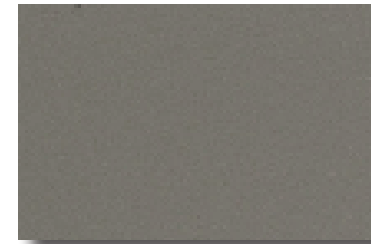
CPT-37 Lees "Heartland", 18"x18" Tile  
No.: D8442  
Color: 307, Capri

RB-6 Johnsonite 4"  
Color: Fawn

Important Disclaimer: Colors presented in this file are provided for general color information only. Due to many different monitor settings on individual computers and different light sources - these finishes may appear from actual color. Actual samples are available from the FPDC/FPS library located on the 8th floor of FHB or may be ordered directly from manufacturers.



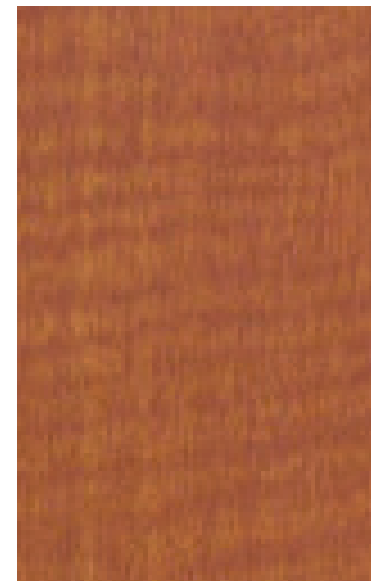
ACT-2



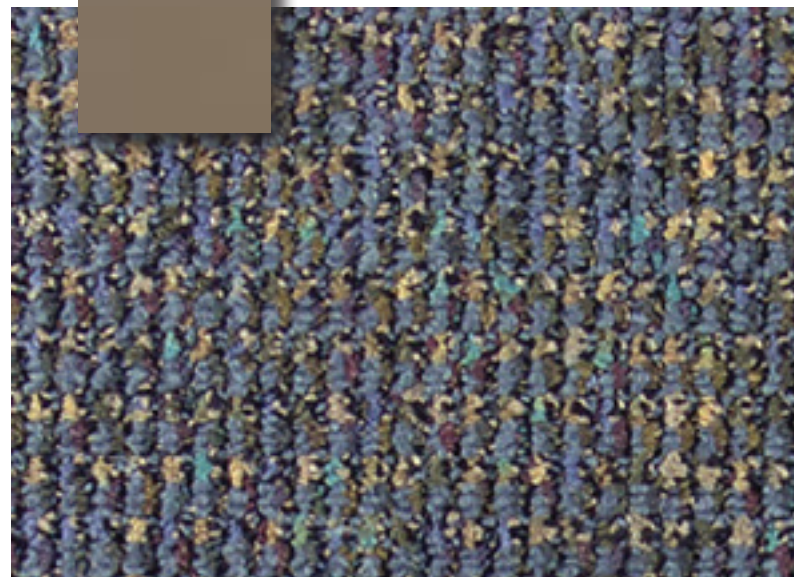
AF-2



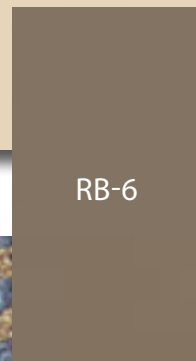
PT-55



PL-38



CPT-37



RB-6

## FACILITIES MANAGEMENT OFFICE OF

FACILITIES PLANNING,  
DESIGN AND  
CONSTRUCTION

INTERIOR FINISH STANDARDS  
FOR

1400 Hermann Pressler Dr.  
T. Boone Pickens Academic Tower  
(PAT)

SHEET TITLE:

## PAT STORAGE ROOMS

LAST UPDATE:

10/12/12

SHEET NO.:

15 OF 49

FILE NAME: ODGECBPATR1.indd

PRINT

BACK TO  
T.O.C.

NEXT PAGE

# FINISH LEGEND

## CEILING

ACT-2 Armstrong World Industries, Inc.  
 No.: 770 Cortega  
 Color: White  
 Finish: Medium Texture  
 Size: 2'x2'x5/8"

## DOORS/ FRAMES

PL-38 Nevamar  
 No.: WA0002E, Tangier Anigre  
 AF-3 Raco "Classic", Anodized Aluminum  
 Color: Clear Coat

## WALLS

PT-55 Benjamin Moore (Field)  
 Color: OC-4, Brandy Cream  
 Finish: Satin  
 TLW-21 American Tile, 12"x12" (Field)  
 Color: CC1-907 (neutral)  
 Finish: Micron Polished  
 TLW-22 American Tile, 12"x12" (Accent)  
 Color: CC1-904 (green).  
 Finish: Micron Polished

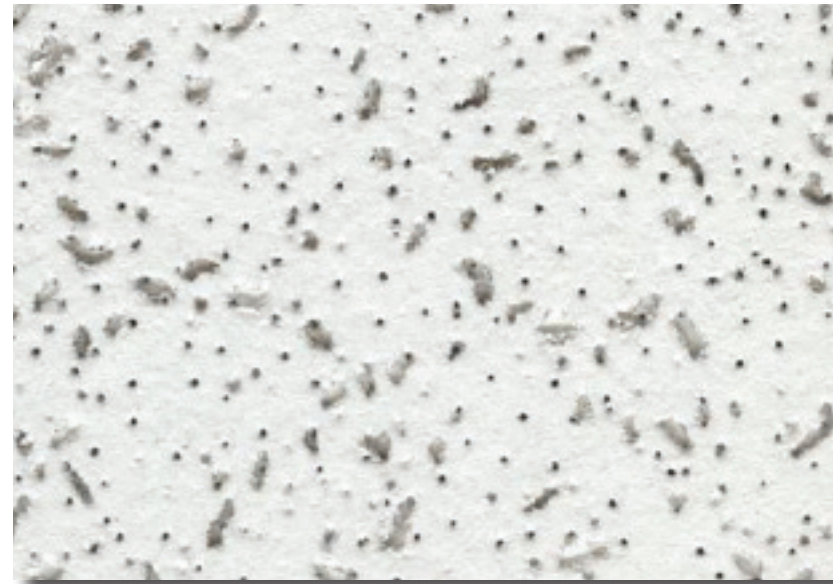
## FLOORS/ BASE

TLF-20 American Tile, 12"x12" (Field)  
 Color: CC1-907 (neutral)  
 Finish: Micron Matte  
 TLW-21 American Tile, 12"x12" (Field)  
 Color: CC1-907 (neutral)  
 Finish: Micron Polished  
 TLW-22 American Tile, 12"x12" (Accent)  
 Color: CC1-904 (green).  
 Finish: Micron Polished

## ARCHITECTURAL WOODWORK

PL-3 Formica  
 (Partitions - over phenolic resin core)  
 Color: #744 Lacewood Matte  
 SSM-8 Dupon, "Corian" (Sink)  
 Color: Bisque  
 (Restrooms)  
 SSM-13 Dupon, "Corian" (Sink Counter)  
 Color: Rainforest  
 (Restrooms)

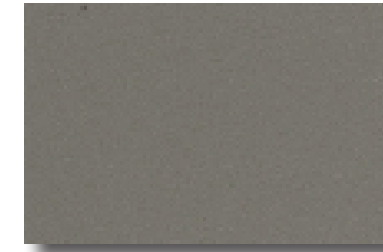
Important Disclaimer: Colors presented in this file are provided for general color information only. Due to many different monitor settings on individual computers and different light sources - these finishes may appear from actual color. Actual samples are available from the FPDC/FPS library located on the 8th floor of FHB or may be ordered directly from manufacturers.



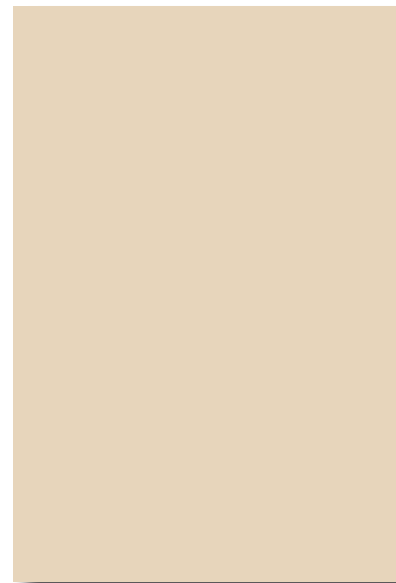
ACT-2



PL-38



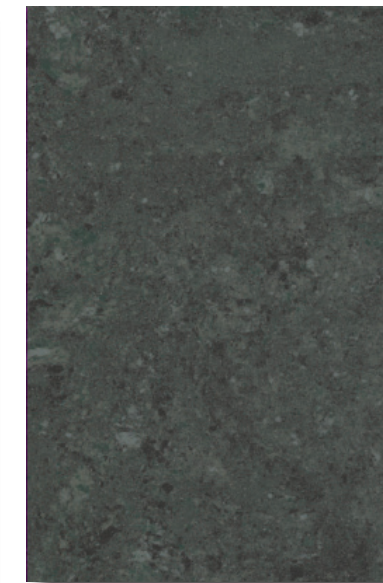
AF-3



PT-55



TLW-21



TLW-22



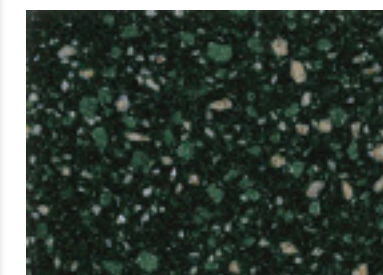
TLF-20



PL-3



SSM-8



SSM-13

## FACILITIES MANAGEMENT OFFICE OF

FACILITIES PLANNING,  
 DESIGN AND  
 CONSTRUCTION

INTERIOR FINISH STANDARDS  
 FOR

1400 Hermann Pressler Dr.  
 T.BoonePickensAcademicTower  
 (PAT)

SHEET TITLE:

## PAT PUBLIC RESTROOMS

LAST UPDATE:

10/12/12

SHEET NO.:

16 OF 49

FILE NAME: ODGECBPATR1.indd

PRINT

BACK TO  
 T.O.C.

NEXT PAGE

# FINISH LEGEND

## CEILING

ACT-2 Armstrong World Industries, Inc.  
No.: 770 Cortega  
Color: White  
Finish: Medium Texture  
Size: 2x2'x5/8"

## DOORS/ FRAMES

PL-38 Nevamar  
No.: WA0002E, Tangier Anigre  
  
AF-3 Raco "Classic", Anodized Aluminum  
Color: Clear Coat

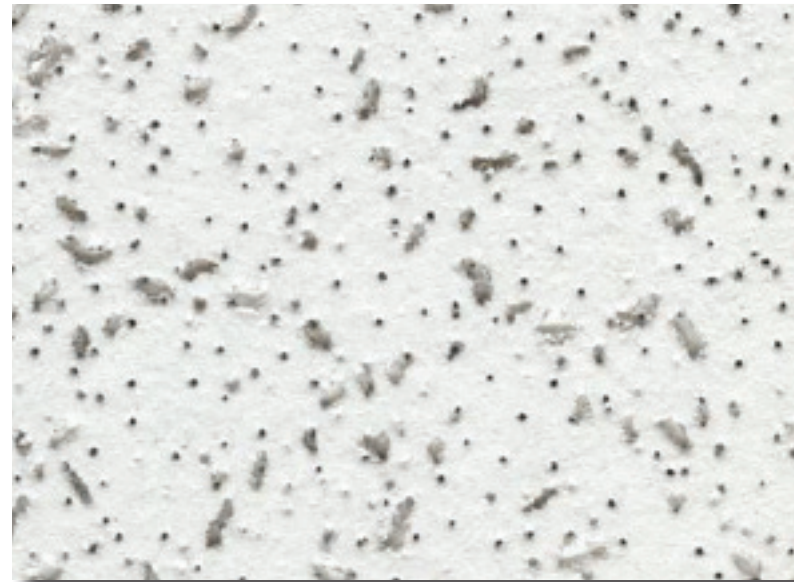
## WALLS

PT-55 Benjamin Moore (Field)  
Color: OC-4, Brandy Cream  
Finish: Satin

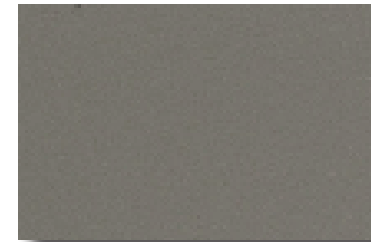
## FLOORS/ BASE

CPT-37 Lees "Heartland", 18"x18" Tile  
No.: D8442  
Color: 307, Capri  
  
RB-6 Johnsonite 4" Rubber Cove Base  
Color: Fawn

Important Disclaimer: Colors presented in this file are provided for general color information only. Due to many different monitor settings on individual computers and different light sources - these finishes may appear from actual color. Actual samples are available from the FPDC/FPS library located on the 8th floor of FHB or may be ordered directly from manufacturers.



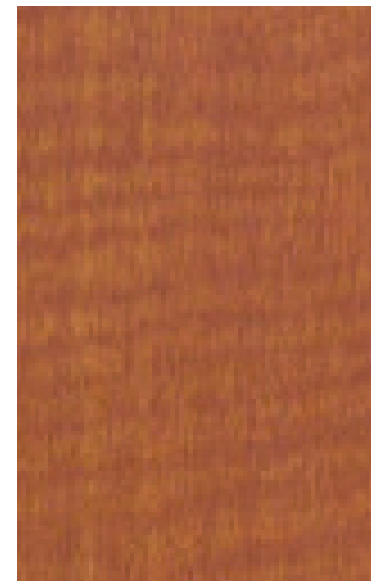
ACT-2



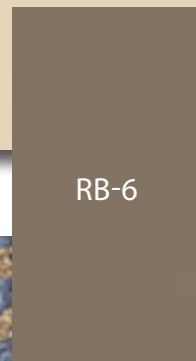
AF-2



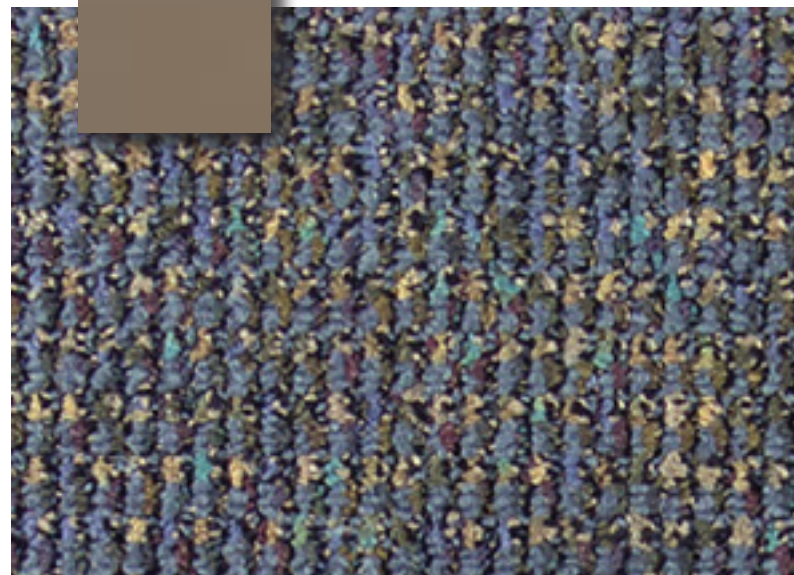
PT-55



PL-38



RB-6



CPT-37

## FACILITIES MANAGEMENT OFFICE OF

FACILITIES PLANNING,  
DESIGN AND  
CONSTRUCTION

INTERIOR FINISH STANDARDS  
FOR

1400 Hermann Pressler Dr.  
T. Boone Pickens Academic Tower  
(PAT)

SHEET TITLE:

**PAT  
TV STUDIO**

LAST UPDATE:

**10/12/12**

SHEET NO.:

**17** OF 49

FILE NAME: ODGECBPATR1.indd

PRINT

BACK TO  
T.O.C.

NEXT PAGE

# FINISH LEGEND

## CEILING

ACT-2 Armstrong World Industries, Inc.  
 No.: 770 Cortega  
 Color: White  
 Finish: Medium Texture  
 Size: 2x2'x5/8"

## DOORS/ FRAMES

PL-38 Nevamar  
 No.: WA0002E, Tangier Anigre

AF-3 Raco "Classic", Anodized Aluminum  
 Color: Clear Coat

## WALLS

PT-55 Benjamin Moore (Field)  
 Color: OC-4, Brandy Cream  
 Finish: Satin

## FLOORS/ BASE

VCT-15 Mannington Commercial  
 "Inspirations" 12" x 12"  
 Color: 417, Cream Tones

RB-6 Johnsonite 4"  
 Color: Fawn

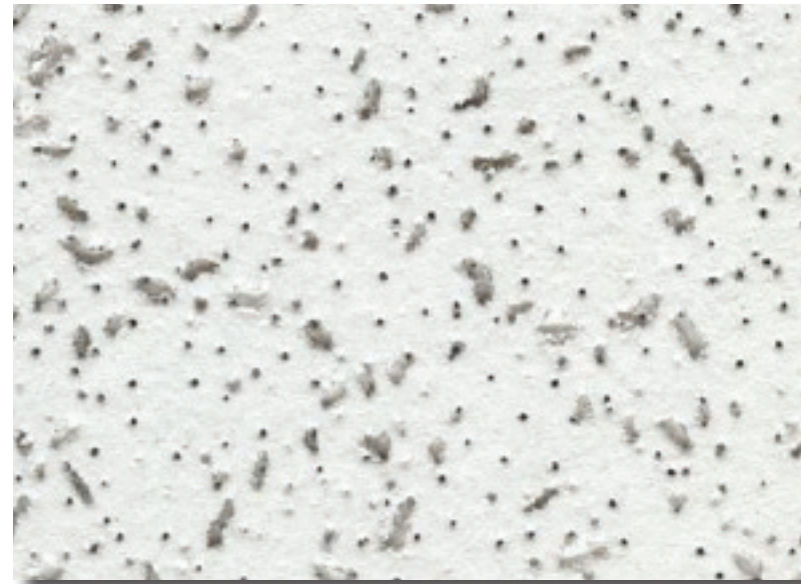
## ARCHITECTURAL WOODWORK

PL-3 Formica (Vertical Surfaces)  
 No.: 744, Lacewood Matte

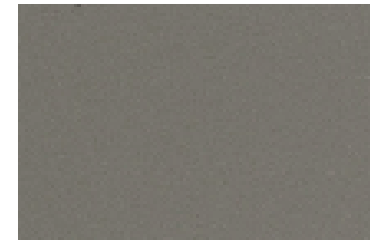
PL-37 Wilsonart (Horizontal Surfaces)  
 No.: 4797060, Burnished Spruce

WT-18 Doellken Wood Tape  
 3mm pvc  
 Color: Teal # 9157

Important Disclaimer: Colors presented in this file are provided for general color information only. Due to many different monitor settings on individual computers and different light sources - these finishes may appear from actual color. Actual samples are available from the FPDC/FPS library located on the 8th floor of FHB or may be ordered directly from manufacturers.



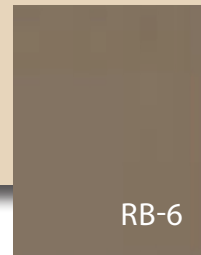
ACT-2



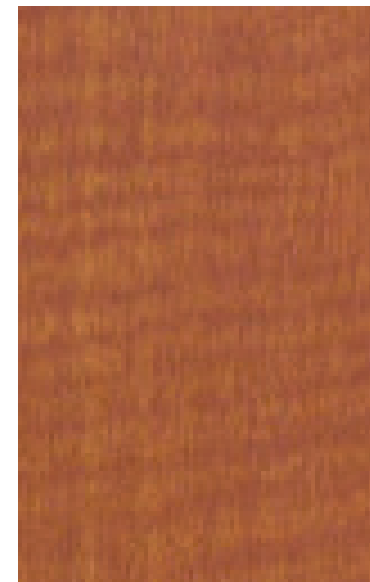
AF-3



PT-55



RB-6



PL-38



PL-37



VCT-15

## FACILITIES MANAGEMENT OFFICE OF

FACILITIES PLANNING,  
 DESIGN AND  
 CONSTRUCTION

INTERIOR FINISH STANDARDS  
 FOR

1400 Hermann Pressler Dr.  
 T.BoonePickensAcademicTower  
 (PAT)

SHEET TITLE:

**PAT**  
**WORK ROOMS/  
 BREAK ROOMS**

LAST UPDATE:

**10/12/12**

SHEET NO.:

**18** OF **49**

FILE NAME: ODGECBPATR1.indd

PRINT

BACK TO  
 T.O.C.

NEXT PAGE



<b>DOCUMENT REVISION HISTORY</b>			
<b>Issue</b>	<b>Date</b>	<b>Revision Description</b>	<b>Revisor</b>
Rev. 0	2/24/09	Initial Adoption of PAT Interior Finishes.	JK, KB, CY
Rev. 1	10/12/12	Revisions to 2009 Document	LCT
Rev. 2	12/04/12	Revisions to October 2012 Document	RP

THE UNIVERSITY OF TEXAS  
**MD Anderson**  
~~Cancer Center~~

---

**FACILITIES  
MANAGEMENT  
OFFICE OF**

FACILITIES PLANNING,  
DESIGN AND  
CONSTRUCTION

---

INTERIOR FINISH STANDARDS  
FOR

1400 Hermann Pressler Dr.  
T. Boone Pickens Academic Tower  
(PAT)

---

SHEET TITLE:

**FHB  
DOCUMENT REVISION  
HISTORY**

---

LAST UPDATE:

**10/12/12**

---

SHEET NO.:

**19** OF **49**

FILE NAME: ODGECBPATR1.indd