

TABLE OF CONTENTS

SHEET:

- 1 - TABLE OF CONTENTS
- 2 - FINISH SCHEDULE - 1/2
- 3 - FINISH SCHEDULE - 2/2
- 4 - CONFERENCE
- 5 - CORRIDORS (Public)
- 6 - CORRIDORS (Interior)
- 7 - OFFICE SPACE (Faculty)
- 8 - OFFICESPACE(Professional&Staff)
- 9 - STORAGE
- 10 - TOILETS
- 11 - LABS (Research)
- 12 - DOCUMENT REVISION HISTORY

Important Disclaimer: Colors presented in this file are provided for general color information only. Due to many different monitor settings on individual computers and different light sources - these finishes may appear from actual color. Actual samples are available from the FPDC/FPS library located on the 8th floor of FHB or may be ordered directly from manufacturers.

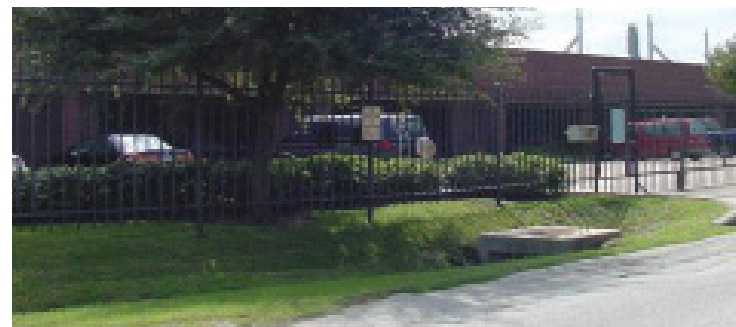
CORDER STREET WAREHOUSE



EL RIO



NAOMI LAB



OFF-CAMPUS LEASED SPACE

THE UNIVERSITY OF TEXAS

MD Anderson
Cancer Center

FACILITIES MANAGEMENT OFFICE OF

FACILITIES PLANNING,
DESIGN AND
CONSTRUCTION

INTERIOR FINISH STANDARDS
FOR
OFF - CAMPUS LEASED SPACE

SHEET TITLE:

OFF-CAMPUS LEASED SPACE
TABLE OF CONTENTS

LAST UPDATE:

01/14/2014

SHEET NO.:

1 OF 12

FILE NAME: ODGECBOCLPR1

PRINT

EXIT

NEXT PAGE

Interior Finish Standards

Off- Campus Leased Space

Updated 06/29/2009

*Interior Finishes in Leased Spaces are subject to building management guidelines and lease building standards.
Where possible, MDACC standard finishes should be used.*

Room Type	Flooring	Base	Walls	Doors	Door Facings	Ceiling	Architectural Woodwork	Trim	Window Treatment
Conference	<p>CPT-37 Lees "Heartland" # D8442 Capri # 307 18"x18" (Carpet Tile / Preferred) or</p> <p>CPB-34 Lees "In Town" LEO26 #401 Paradise (Broadloom / Budgetary)</p>	<p>RB-6 Johnsonite 4" Coved Color: 80, Fawn</p>	<p>PT - 55 Benjamin Moore #OC-4 Brandy Cream</p> <p><i>Accent Walls:</i> PT-54 Benjamin Moore #690 Grenada Villa</p> <p>PT-59 Benjamin Moore #719 Hemlock</p> <p>PT-62 Benjamin Moore #1412 Central Mauve</p> <p>PT-65 Benjamin Moore #1207 San Carlos Tan</p>	<p><i>New Construction</i> PL - 3 Formica Lacewood Matte or <i>Match Existing When Applicable</i></p>	<p>PT-55 Benjamin Moore #OC-4 Brandy Cream</p>	<p>ACT - 5 Armstrong "Cortega " # 769 White Medium Texture 2'x2'x5/8"</p>	<p>PL - 3 Formica #744 Lacewood Matte</p> <p>PL-37 Wilsonart #4797-60 Burnished Spruce (Horizontal Surfaces only)</p>	N/A	<p>WC - 9 Hunter Douglas Mini Blind "Celebrity" Brushed Aluminum # C065 or WC-12 Hunter Douglas Mini Blind "Celebrity" UMBER 0820 or Building Standard</p>
Corridors (public)		N/A	N/A	<p><i>New Construction</i> PL - 3 Formica Lacewood Matte or <i>Match Existing When Applicable</i></p>	N/A	N/A	N/A	N/A	N/A
Corridors (Interior)	<p>CPT-37 Lees "Heartland" # D8442 Capri # 307 18"x18" (Carpet Tile / Preferred) or</p> <p>CPB-34 Lees "In Town" LEO26 #401 Paradise (Broadloom / Budgetary)</p>	<p>RB-6 Johnsonite 4" Coved Color: 80, Fawn</p>	<p>PT - 55 Benjamin Moore #OC-4 Brandy Cream</p> <p><i>Accent Walls:</i> PT-54 Benjamin Moore #690 Grenada Villa</p> <p>PT-59 Benjamin Moore #719 Hemlock</p> <p>PT-62 Benjamin Moore #1412 Central Mauve</p> <p>PT-65 Benjamin Moore #1207 San Carlos Tan</p>	<p><i>New Construction</i> PL - 3 Formica Lacewood Matte or <i>Match Existing When Applicable</i></p>	<p>PT - 55 Benjamin Moore #OC -4 Brandy Cream</p>	<p>ACT - 5 Armstrong "Cortega " # 769 White Medium Texture 2'x2'x5/8"</p>	N/A	N/A	N/A

FACILITIES
MANAGEMENT
OFFICE OF
FACILITIES PLANNING,
DESIGN AND
CONSTRUCTION

INTERIOR FINISH STANDARDS
FOR
OFF - CAMPUS LEASED SPACE

SHEET TITLE:

OFF-CAMPUS LEASED SPACE
FINISH SCHEDULE 1/2

LAST UPDATE:

01/14/2014

SHEET NO.:

2 OF 12

FILE NAME: ODGECBOCLPR1

Interior Finish Standards

Off- Campus Leased Space

Updated 06/29/2009

Interior Finishes in Leased Spaces are subject to building management guidelines and lease building standards.
Where possible, MDACC standard finishes should be used.

Room Type	Flooring	Base	Walls	Doors	Door Facings	Ceiling	Architectural Woodwork	Trim	Window Treatment
Office Space (Faculty)	CPT-37 Lees "Heartland " # D8442 Capri # 307 18"x18" (Carpet Tile / Preferred) or CPB-34 Lees "In Town" LEO26 #401 Paradise (Broadloom / Budgetary)	RB-6 Johnsonite 4" Coved Color: 80, Fawn	PT - 55 Benjamin Moore #OC -4 Brandy Cream	<i>New Construction</i> PL - 3 Formica Lacewood Matte or <i>Match Existing When Applicable</i>	PT - 55 Benjamin Moore #OC -4 Brandy Cream	ACT - 5 Armstrong "Cortega " # 769 White Medium Texture 2'x2'x5/8"	PL - 3 Formica Lacewood Matte	N/A	WC - 9 Hunter Douglas Mini Blind "Celebrity" Brushed Aluminum # C065 or WC-12 Hunter Douglas Mini Blind "Celebrity" Umber 0820 or Building Standard
Office Space (Professional & Staff)	CPT-37 Lees "Heartland" # D8442 Capri # 307 18"x18" (Carpet Tile / Preferred) or CPB-34 Lees "In Town" LEO26 #401 Paradise (Broadloom / Budgetary)	RB-6 Johnsonite 4" Color: Fawn	PT - 55 Benjamin Moore #OC -4 Brandy Cream	<i>New Construction</i> PL - 3 Formica Lacewood Matte or <i>Match Existing When Applicable</i>	PT - 55 Benjamin Moore #OC -4 Brandy Cream	ACT - 5 Armstrong "Cortega " # 769 White Medium Texture 2'x2'x5/8"	PL - 3 Formica #744 Lacewood Matte PL-37 Wilsonart #4797-60 Burnished Spruce (Horizontal Surfaces only)	N/A	WC - 9 Hunter Douglas Mini Blind "Celebrity" Brushed Aluminum # C065 or WC-12 Hunter Douglas Mini Blind "Celebrity" Umber 0820 or Building Standard
Storage	VCT - 15 Mannington Inspirations Cream Tones #417 12x12	RB-6 Johnsonite 4" Coved Color: 80, Fawn	PT - 55 Benjamin Moore #OC -4 Brandy Cream	<i>New Construction</i> PL - 3 Formica Lacewood Matte or <i>Match Existing When Applicable</i>	PT - 55 Benjamin Moore #OC -4 Brandy Cream	ACT - 5 Armstrong "Cortega " # 769 White Medium Texture 2'x2'x5/8"	PL - 29 Nevamar Taupe Matrix # MR-2-5T	N/A	N/A
Toilets	N/A	N/A	N/A	<i>New Construction</i> PL - 3 Formica Lacewood Matte or <i>Match Existing When Applicable</i>	PT - 55 Benjamin Moore #OC -4 Brandy Cream	N/A	N/A	N/A	N/A
Labs (Research)	<i>Field</i> VCT- 2 Armstrong Cool White #51899 <i>Accent Options</i> VCT-3 Armstrong Excelon Teal # 51906 VCT-4 Armstrong Excelon Dutch Delft # 51916 VCT-16 Armstrong Excelon Etruscan Red #51879	RB-2 Roppe Pinnacle 4" Coved Color: RP93, Black-Brown	PT - 33 Benjamin Moore China White # I-74 <i>Accent Wall</i> PT-54 Benjamin Moore #690 Grenada Villa PT-59 Benjamin Moore #719 Hemlock PT-62 Benjamin Moore #1412 Central Mauve PT-65 Benjamin Moore #1207 San Carlos Tan	<i>New Construction</i> PL - 3 Formica Lacewood Matte or <i>Match Existing When Applicable</i>	PT - 39 ICI Forest Black # 578	ACT - 5 Armstrong "Cortega " # 769 White Medium Texture 2'x2'x5/8"	<i>Millwork Counters:</i> PL - 2 Formica, "Chem Top" Antique White # 932-CT or PL - 26 Trespa White # T 03.0.0 <i>Casework:</i> LCW - 1 Fisher Hamilton Eggshell # EL-1377	N/A	WC - 9 Hunter Douglas Mini Blind "Celebrity" Brushed Aluminum # C065 or WC-12 Hunter Douglas Mini Blind "Celebrity" Umber 0820 or Building Standard

FACILITIES
MANAGEMENT
OFFICE OF
FACILITIES PLANNING,
DESIGN AND
CONSTRUCTION

INTERIOR FINISH STANDARDS
FOR
OFF - CAMPUS LEASED SPACE

SHEET TITLE:

OFF-CAMPUS LEASED SPACE
FINISH SCHEDULE 2/2

LAST UPDATE:

01/14/2014

SHEET NO.:

3 OF 12
FILE NAME: ODGECBOCLPR1

FINISH LEGEND

CEILING

ACT-5 Armstrong, "Cortega", 2'x2'x5/8"
 No.: 769, Medium Texture
 Color: White

DOORS/DOOR FACINGS

PL-3 Formica
 No.: 744, Lacewood Matte
 PT-55 Benjamin Moore
 Color: OC-4, Brandy Cream

WALLS

PT-55 Benjamin Moore (Field)
 Color: OC-4, Brandy Cream
 PT-54 Benjamin Moore (Accent)
 Color: 690, Grenada Villa
 PT-59 Benjamin Moore (Accent)
 Color: 719, Hemlock
 PT-62 Benjamin Moore (Accent)
 Color: 1412, Central Mauve
 PT-65 Benjamin Moore (Accent)
 Color: 1207, San Carlos Tan

FLOORS/BASE

CPT-37 Lees, "Heartland", 18"x18" Tile
 No.: D8442
 Color: 307, Capri
 CPB-34 Lees, "In Town", Broadloom
 No.: LEO26
 Color: 401, Paradise
 RB-6 Johnsonite, 4" Coved
 Color: 80, Fawn

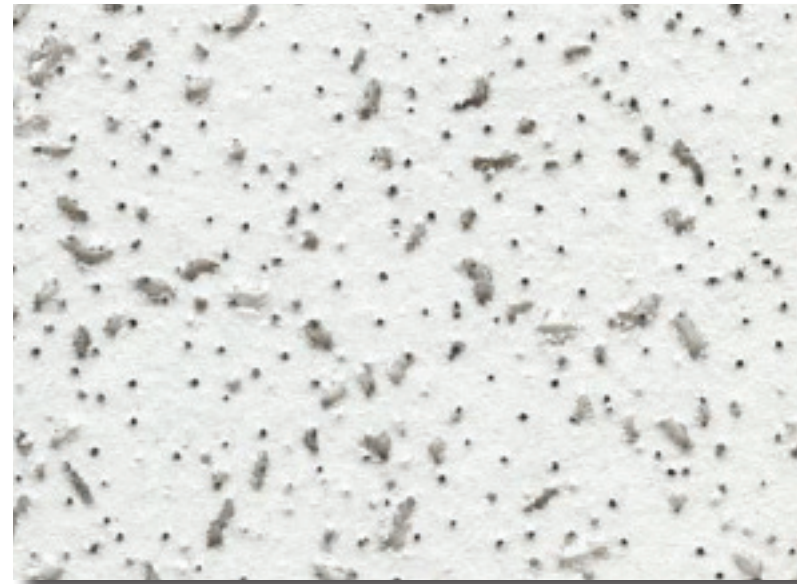
ARCHITECTURAL WOODWORK

PL-3 Formica
 No.: 744, Lacewood Matte
 PL-37 Wilsonart (Horizontal Surfaces only)
 No.: 4797-60, Burnished Spruce

WINDOW TREATMENTS

WC-9 HunterDouglasMiniBlinds, "Celebrity"
 Color: C065, Brushed Aluminum
 WC-12 Hunter Douglas Mini Blinds, "Celebrity"
 Color: 0820, Umber

Important Disclaimer: Colors presented in this file are provided for general color information only. Due to many different monitor settings on individual computers and different light sources - these finishes may appear from actual color. Actual samples are available from the FPDC/FPS library located on the 8th floor of FHB or may be ordered directly from manufacturers.



ACT-5



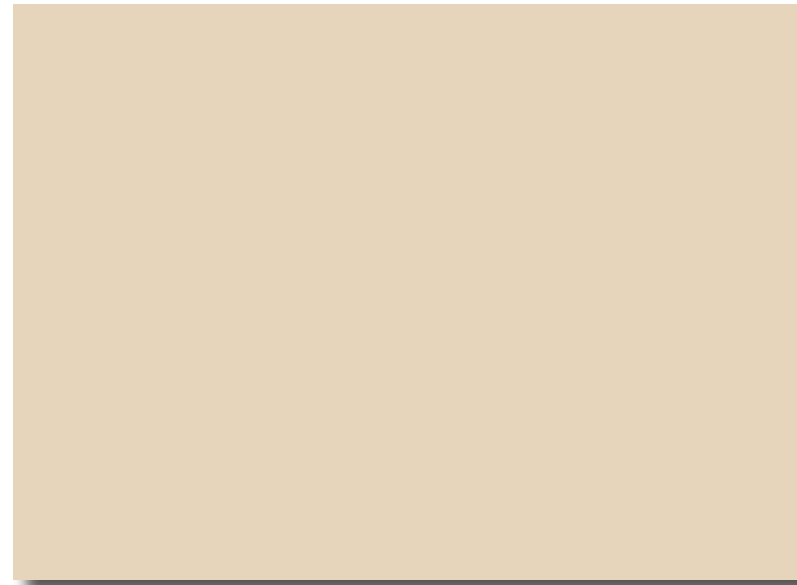
PL-37



PT-54



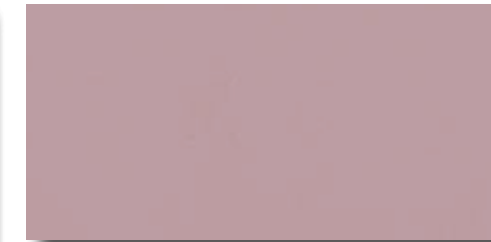
PT-59



PT-55



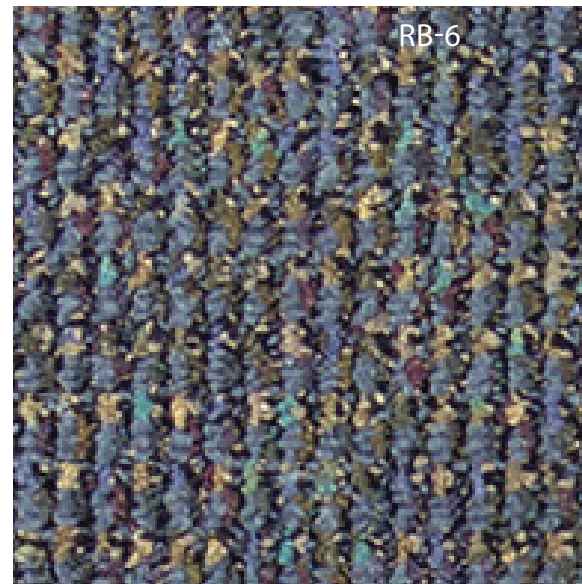
PL-3



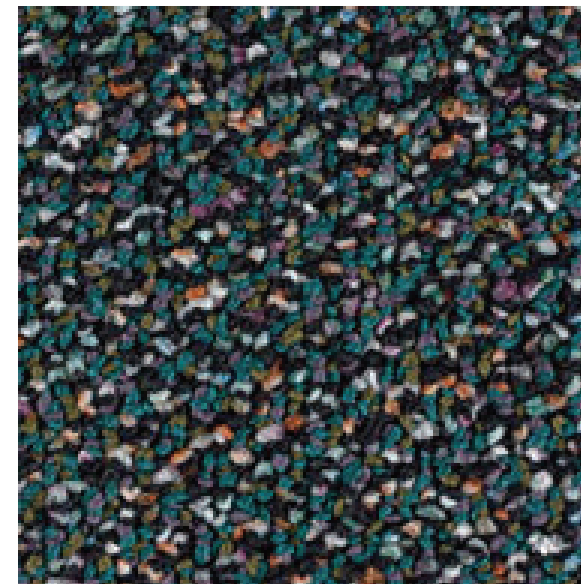
PT-62



PT-65



RB-6



CPB-34



WC-9



WC-12

FACILITIES MANAGEMENT OFFICE OF

FACILITIES PLANNING, DESIGN AND CONSTRUCTION

INTERIOR FINISH STANDARDS FOR OFF - CAMPUS LEASED SPACE

SHEET TITLE:

OFF-CAMPUS LEASED SPACE CONFERENCE

LAST UPDATE:

01/14/2014

SHEET NO.:

4 OF 12

FILE NAME: ODGECBOCLPR1

PRINT

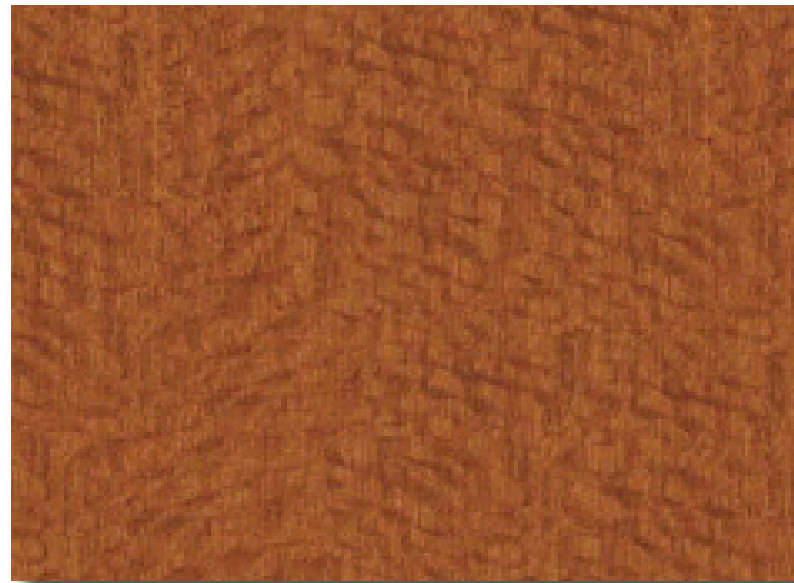
BACK TO
 T.O.C.

NEXT PAGE

FINISH LEGEND

DOORS

PL-3 Formica
No.: 744, Lacewood Matte



PL-3

Important Disclaimer: Colors presented in this file are provided for general color information only. Due to many different monitor settings on individual computers and different light sources - these finishes may appear from actual color. Actual samples are available from the FPDC/FPS library located on the 8th floor of FHB or may be ordered directly from manufacturers.

FACILITIES MANAGEMENT OFFICE OF

FACILITIES PLANNING,
DESIGN AND
CONSTRUCTION

INTERIOR FINISH STANDARDS
FOR
OFF - CAMPUS LEASED SPACE

SHEET TITLE:

OFF-CAMPUS LEASED SPACE
CORRIDORS (Public)

LAST UPDATE:

01/14/2014

SHEET NO.:

5 OF 12

FILE NAME: ODGECBOCLPR1

PRINT

BACK TO
T.O.C.

NEXT PAGE

FINISH LEGEND

CEILING

ACT-5 Armstrong, "Cortega", 2'x2'x5/8"
 No.: 769, Medium Texture
 Color: White

DOORS/DOOR FACINGS

PL-3 Formica
 No.: 744, Lacewood Matte
 PT-55 Benjamin Moore
 Color: OC-4, Brandy Cream

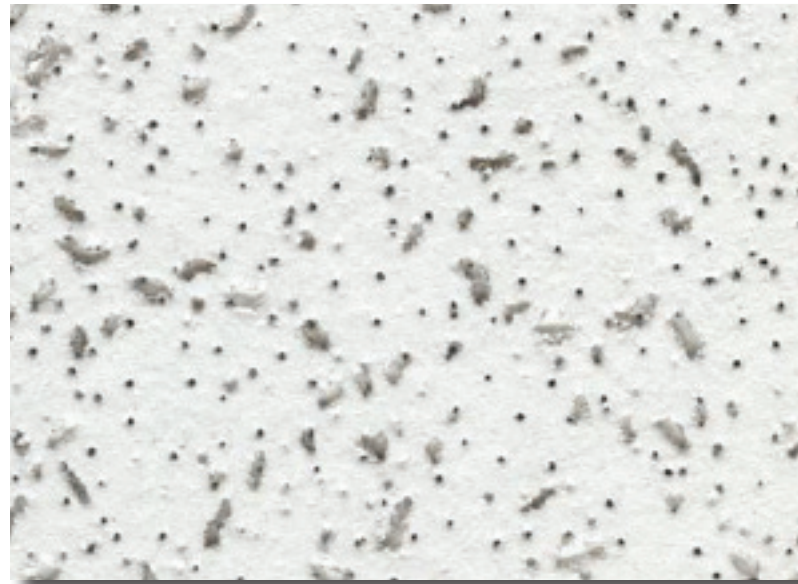
WALLS

PT-55 Benjamin Moore (Field)
 Color: OC-4, Brandy Cream
 PT-54 Benjamin Moore (Accent)
 Color: 690, Grenada Villa
 PT-59 Benjamin Moore (Accent)
 Color: 719, Hemlock
 PT-62 Benjamin Moore (Accent)
 Color: 1412, Central Mauve
 PT-65 Benjamin Moore (Accent)
 Color: 1207, San Carlos Tan

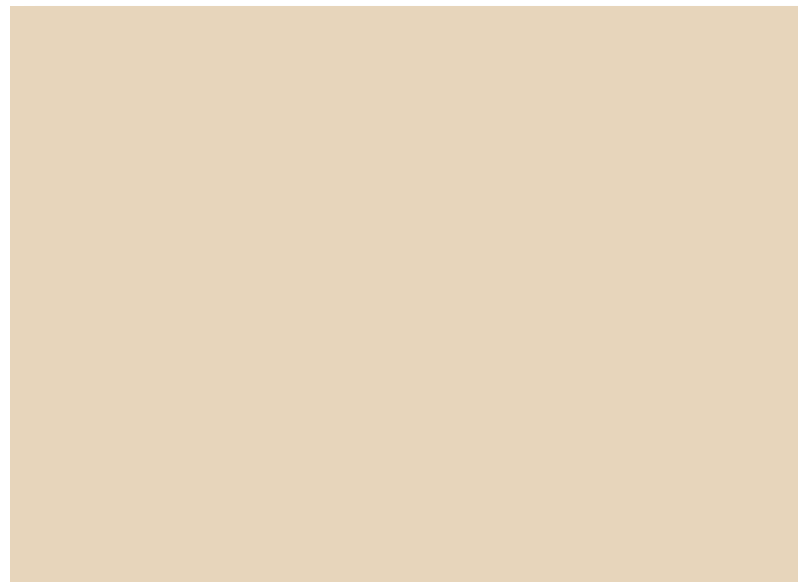
FLOORS/BASE

CPT-37 Lees, "Heartland", 18"x18" Tile
 No.: D8442
 Color: 307, Capri
 CPB-34 Lees, "In Town", Broadloom
 No.: LEO26
 Color: 401, Paradise
 RB-6 Johnsonite, 4" Coved
 Color: 80, Fawn

Important Disclaimer: Colors presented in this file are provided for general color information only. Due to many different monitor settings on individual computers and different light sources - these finishes may appear from actual color. Actual samples are available from the FPDC/FPS library located on the 8th floor of FHB or may be ordered directly from manufacturers.



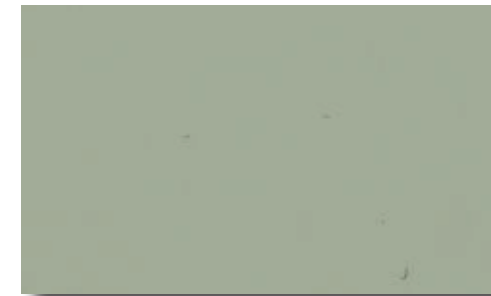
ACT-5



PT-55



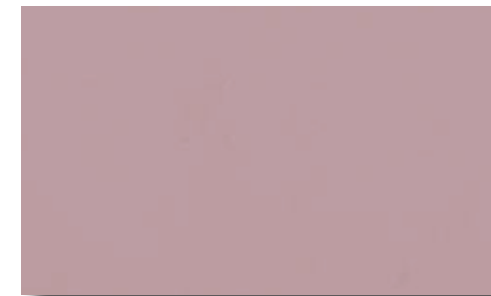
PL-3



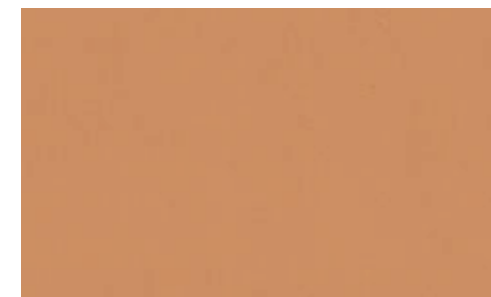
PT-54



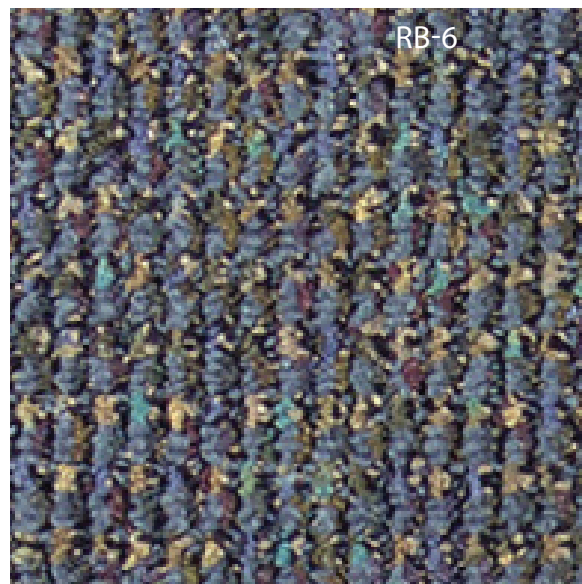
PT-59



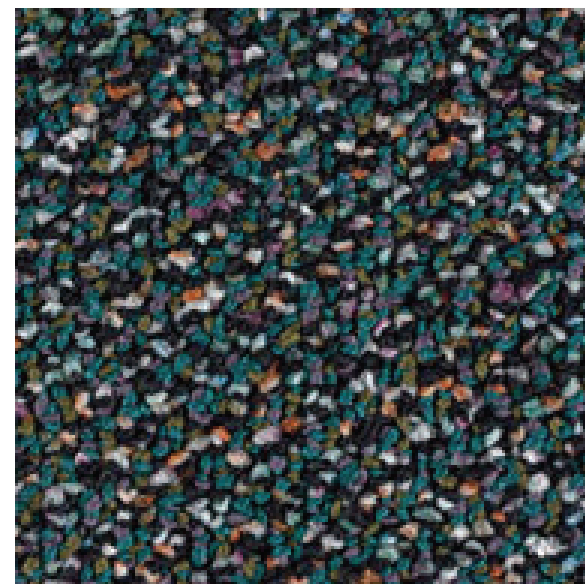
PT-62



PT-65



RB-6



CPB-34

CPT-37

SHEET TITLE:

OFF-CAMPUS LEASED SPACE
 CORRIDORS (interior)

LAST UPDATE:

01/14/2014

SHEET NO.:

6 OF 12

FILE NAME: ODGECBOCLPR1

PRINT

BACK TO
 T.O.C.

NEXT PAGE

FINISH LEGEND

CEILING

ACT-5 Armstrong, "Cortega", 2'x2'x5/8"
 No.: 769, Medium Texture
 Color: White

DOORS/DOOR FACINGS

PL-3 Formica
 No.: 744, Lacewood Matte
 PT-55 Benjamin Moore
 Color: OC-4, Brandy Cream

WALLS

PT-55 Benjamin Moore
 Color: OC-4, Brandy Cream

FLOORS/BASE

CPT-37 Lees, "Heartland", 18"x18" Tile
 No.: D8442
 Color: 307, Capri
 CPB-34 Lees, "In Town", Broadloom
 No.: LEO26
 Color: 401, Paradise
 RB-6 Johnsonite, 4" Coved
 Color: 80, Fawn

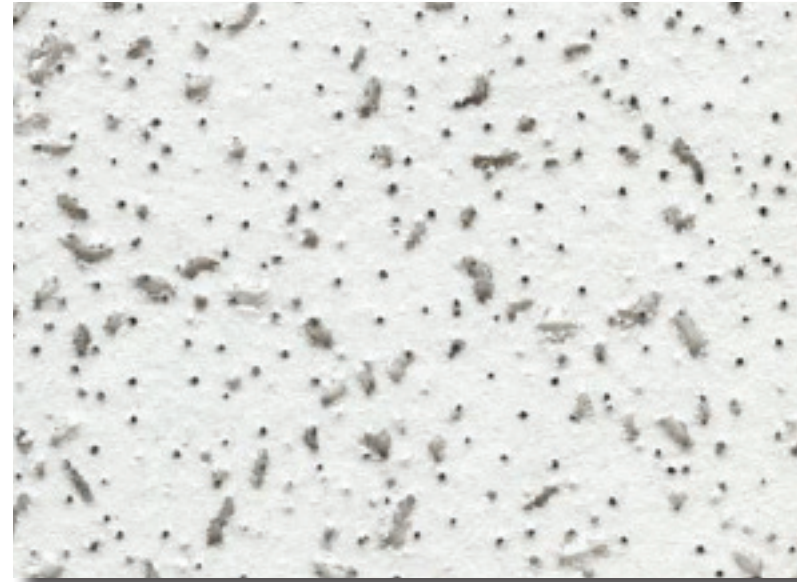
ARCHITECTURAL WOODWORK

PL-3 Formica
 No.: 744, Lacewood Matte

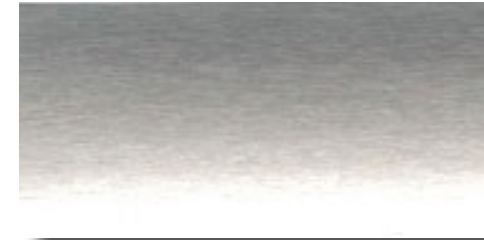
WINDOW TREATMENTS

WC-9 HunterDouglasMiniBlinds, "Celebrity"
 Color: C065, Brushed Aluminum
 WC-12 Hunter Douglas Mini Blinds, "Celebrity"
 Color: 0820, Umber

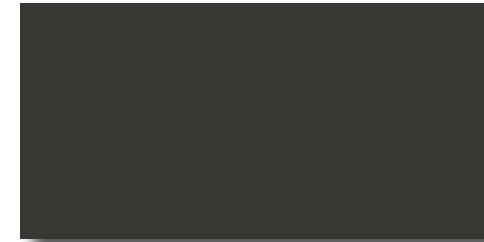
Important Disclaimer: Colors presented in this file are provided for general color information only. Due to many different monitor settings on individual computers and different light sources - these finishes may appear from actual color. Actual samples are available from the FPDC/FPS library located on the 8th floor of FHB or may be ordered directly from manufacturers.



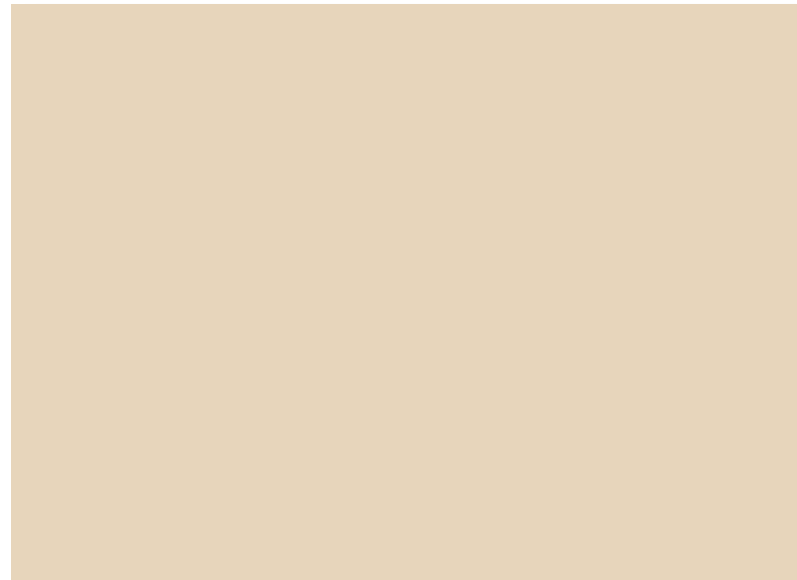
ACT-5



WC-9



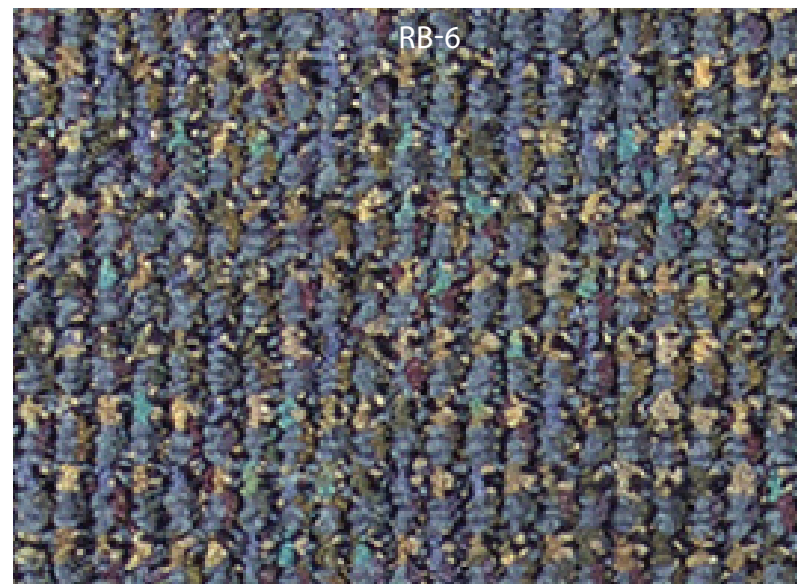
WC-12



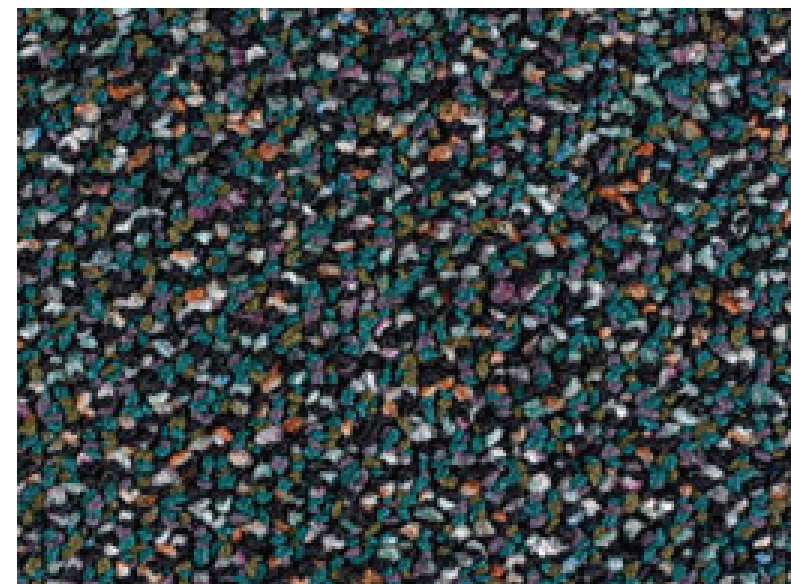
PT-55



PL-3



CPT-37



CPB-34

FACILITIES MANAGEMENT OFFICE OF

FACILITIES PLANNING, DESIGN AND CONSTRUCTION

INTERIOR FINISH STANDARDS FOR OFF - CAMPUS LEASED SPACE

SHEET TITLE:

OFF-CAMPUS LEASED SPACE OFFICE SPACE (Faculty)

LAST UPDATE:

01/14/2014

SHEET NO.:

7 OF 12

FILE NAME: ODGECBOCLPR1

PRINT

BACK TO
 T.O.C.

NEXT PAGE

FINISH LEGEND

CEILING

ACT-5 Armstrong, "Cortega", 2'x2'x5/8"
 No.: 769, Medium Texture
 Color: White

DOORS/DOOR FACINGS

PL-3 Formica
 No.: 744, Lacewood Matte
 PT-55 Benjamin Moore
 Color: OC-4, Brandy Cream

WALLS

PT-55 Benjamin Moore
 Color: OC-4, Brandy Cream

FLOORS/BASE

CPT-37 Lees, "Heartland", 18"x18" Tile
 No.: D8442
 Color: 307, Capri
 CPB-34 Lees, "In Town", Broadloom
 No.: LEO26
 Color: 401, Paradise
 RB-6 Johnsonite, 4" Coved
 Color: 80, Fawn

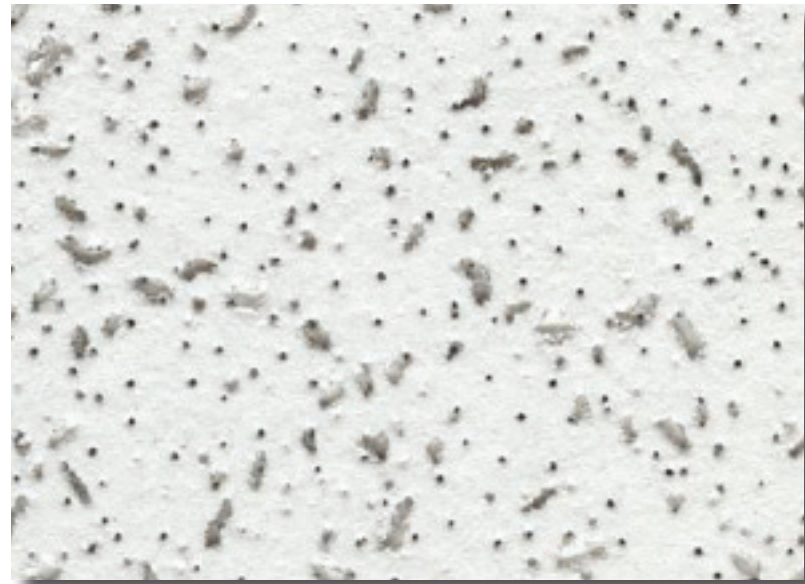
ARCHITECTURAL WOODWORK

PL-3 Formica
 No.: 744, Lacewood Matte
 PL-37 Wilsonart (Horizontal Surfaces only)
 No.: 4797-60, Burnished Spruce

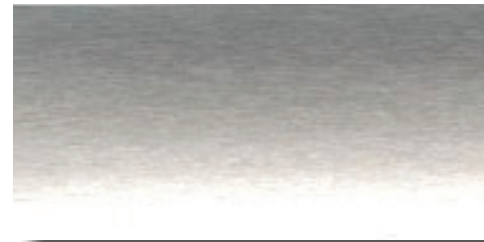
WINDOW TREATMENTS

WC-9 HunterDouglasMiniBlinds,"Celebrity"
 Color: C065, Brushed Aluminum
 WC-12 Hunter Douglas Mini Blinds,"Celebrity"
 Color: 0820, Umber

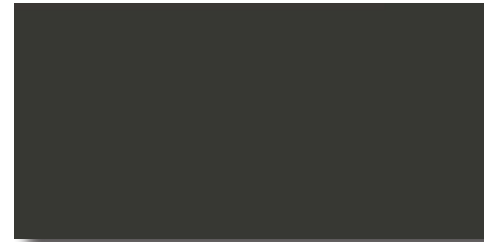
Important Disclaimer: Colors presented in this file are provided for general color information only. Due to many different monitor settings on individual computers and different light sources - these finishes may appear from actual color. Actual samples are available from the FPDC/FPS library located on the 8th floor of FHB or may be ordered directly from manufacturers.



ACT-5



WC-9



WC-12



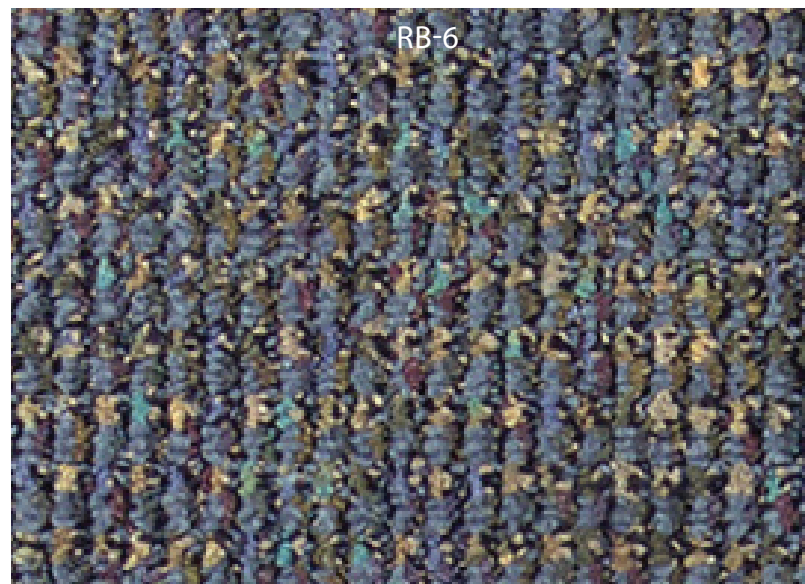
PT-55



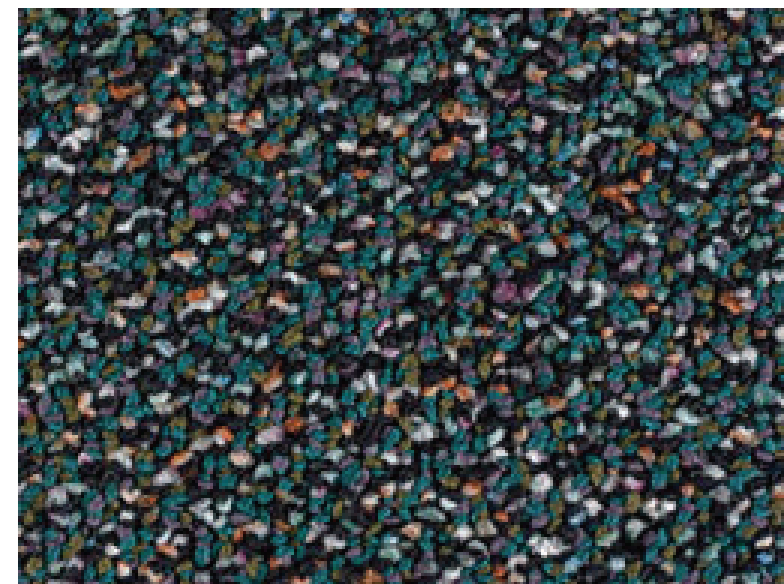
PL-3



PL-37



CPT-37



CPB-34

FACILITIES MANAGEMENT OFFICE OF

FACILITIES PLANNING,
 DESIGN AND
 CONSTRUCTION

INTERIOR FINISH STANDARDS

FOR

OFF - CAMPUS LEASED SPACE

SHEET TITLE:

OFF-CAMPUS LEASED SPACE
OFFICE SPACE
 (Professional & Staff)

LAST UPDATE:

01/14/2014

SHEET NO.:

8 OF 12

FILE NAME: ODGECBOCLPR1

PRINT

BACK TO
 T.O.C.

NEXT PAGE

FINISH LEGEND

CEILING

ACT-5 Armstrong, "Cortega", 2'x2'x5/8"
No.: 769, Medium Texture
Color: White

DOORS/DOOR FACINGS

PL-3 Formica
No.: 744, Lacewood Matte

PT-55 Benjamin Moore
Color: OC-4, Brandy Cream

WALLS

PT-55 Benjamin Moore (Field)
Color: OC-4, Brandy Cream

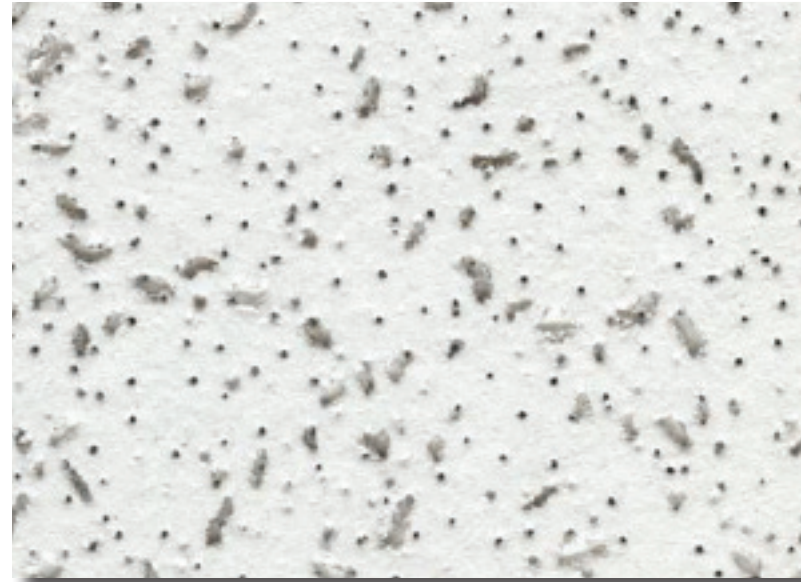
FLOORS/BASE

VCT-15 Mannington Commercial
"Inspirations", 12" x 12"
Color: 417, Cream Tones

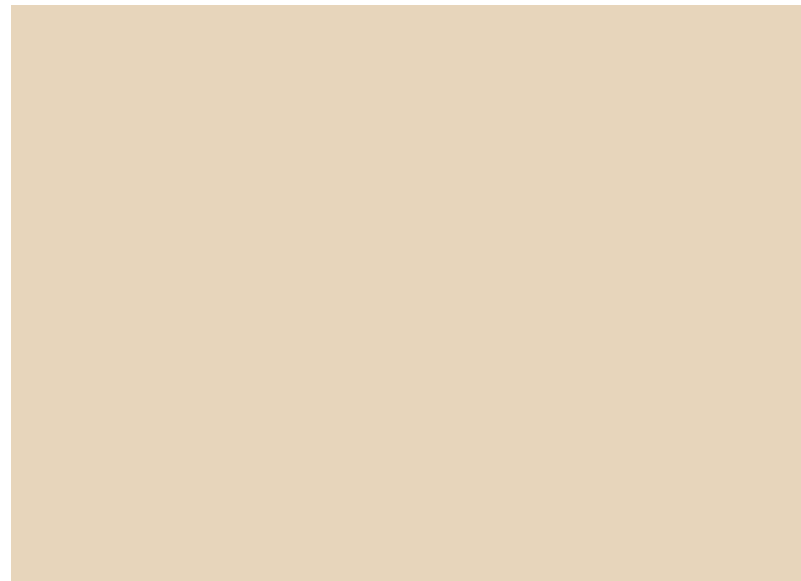
RB-6 Johnsonite, 4" Coved
Color: 80, Fawn

ARCHITECTURAL WOODWORK

PL-29 Nevamar
No.: MR-2-5T, TaupeMatrixTextured



ACT-5



PT-55



VCT-15



PL-3



PL-29

THE UNIVERSITY OF TEXAS

MD Anderson
Cancer Center

FACILITIES
MANAGEMENT
OFFICE OF

FACILITIES PLANNING,
DESIGN AND
CONSTRUCTION

INTERIOR FINISH STANDARDS

FOR

OFF - CAMPUS LEASED SPACE

SHEET TITLE:

OFF-CAMPUS LEASED SPACE
STORAGE

LAST UPDATE:

01/14/2014

SHEET NO.:

9 OF 12

FILE NAME: ODGECBOCLPR1

Important Disclaimer: Colors presented in this file are provided for general color information only. Due to many different monitor settings on individual computers and different light sources - these finishes may appear from actual color. Actual samples are available from the FPDC/FPS library located on the 8th floor of FHB or may be ordered directly from manufacturers.

PRINT

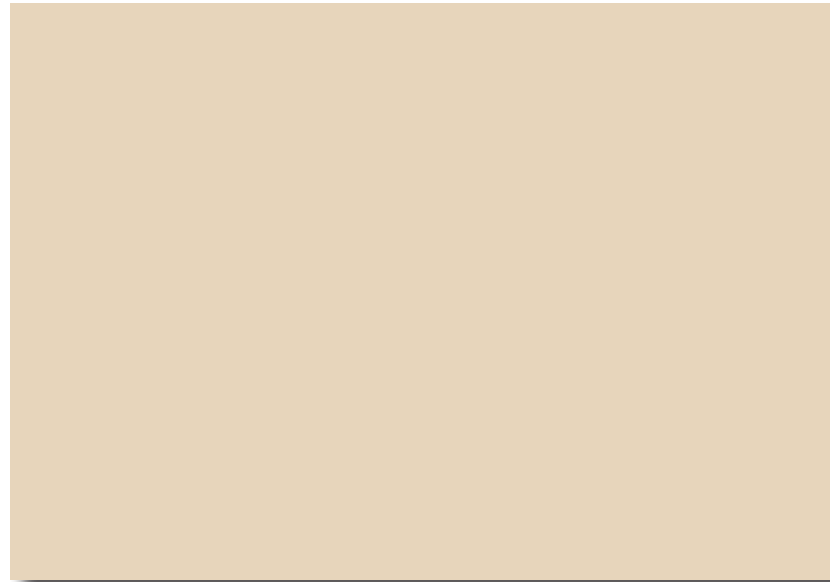
BACK TO
T.O.C.

NEXT PAGE

FINISH LEGEND

DOOR/DOOR FACINGS

- PT-55 Benjamin Moore
Color: OC-4, Brandy Cream
- PL-3 Formica
Color: #744 Lacewood Matte



PT-55



PL-3

Important Disclaimer: Colors presented in this file are provided for general color information only. Due to many different monitor settings on individual computers and different light sources - these finishes may appear from actual color. Actual samples are available from the FPDC/FPS library located on the 8th floor of FHB or may be ordered directly from manufacturers.

FACILITIES MANAGEMENT OFFICE OF

FACILITIES PLANNING,
DESIGN AND
CONSTRUCTION

INTERIOR FINISH STANDARDS
FOR
OFF - CAMPUS LEASED SPACE

SHEET TITLE:

OFF-CAMPUS LEASED SPACE
TOILETS

LAST UPDATE:

01/14/2014

SHEET NO.:

10 OF 12

FILE NAME: ODGECBOCLPR1

PRINT

BACK TO
T.O.C.

NEXT PAGE

FINISH LEGEND

CEILING

ACT-5 Armstrong, "Cortega", 2'x2'x5/8"
 No.: 769, Medium Texture
 Color: White

DOORS/DOOR FACINGS

PL-38 Nevamar
 No.: WA0002E, Tangier Anigre

PT-39 ICI
 Color: 578, Forest Black

WALLS

PT-33 Benjamin Moore (Field)
 Color: I-74, China White

PT-54 Benjamin Moore (Accent)
 Color: 690, Grenada Villa

PT-59 Benjamin Moore (Accent)
 Color: 719, Hemlock

PT-62 Benjamin Moore (Accent)
 Color: 1412, Central Mauve

PT-65 Benjamin Moore (Accent)
 Color: 1207, San Carlos Tan

FLOORS/BASE

VCT-2 Armstrong, "Standard Excelon" (Field)
 Color: 51899, Cool White

VCT-3 Armstrong, "Standard Excelon" (Accent)
 Color: 51906, Teal

VCT-4 Armstrong, "Standard Excelon" (Accent)
 Color: 51916, Dutch Delft

VCT-16 Armstrong, "Standard Excelon" (Accent)
 Color: 51879 Etruscan Red

RB-6 Roppe, "Pinnacle", 4" Coved
 Color: RP93, Black-Brown

ARCHITECTURAL WOODWORK

PL-16 Formica (Chem-Top Surface)
 No.: 932-CT, Antique White

PL-26 Trespa (Millwork Counters)
 No.: T 03.0.0/CR, White

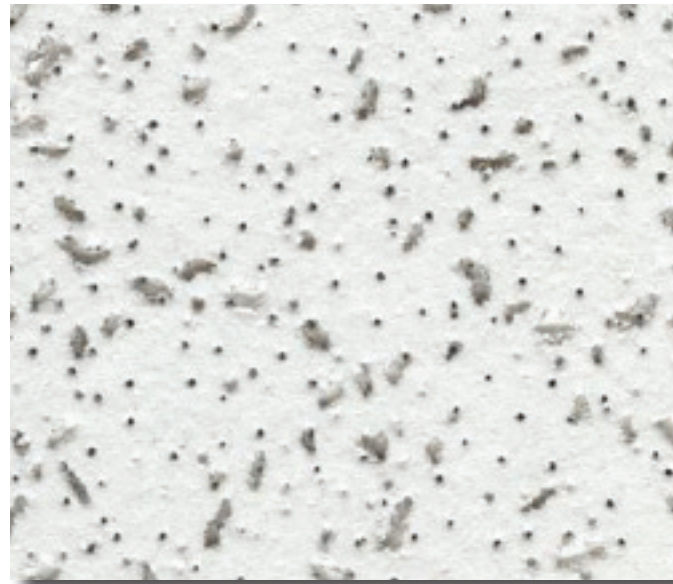
LCW-1 Fisher Hamilton (Casework)
 No.: 1377, Eggshell

WINDOW TREATMENTS

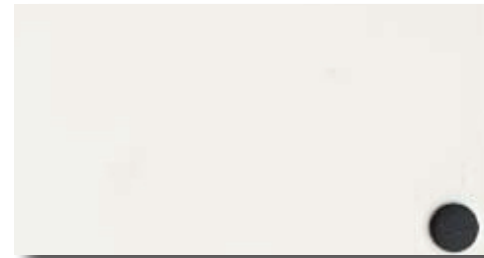
WC-9 Hunter Douglas Mini Blinds, "Celebrity"
 Color: C065, Brushed Aluminum

WC-12 Hunter Douglas Mini Blinds, "Celebrity"
 Color: 0820, Umber

Important Disclaimer: Colors presented in this file are provided for general color information only. Due to many different monitor settings on individual computers and different light sources - these finishes may appear from actual color. Actual samples are available from the FPDC/FPS library located on the 8th floor of FHB or may be ordered directly from manufacturers.



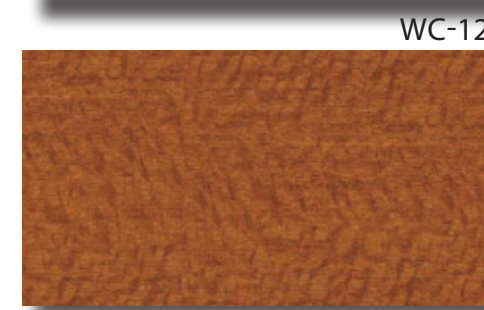
ACT-5



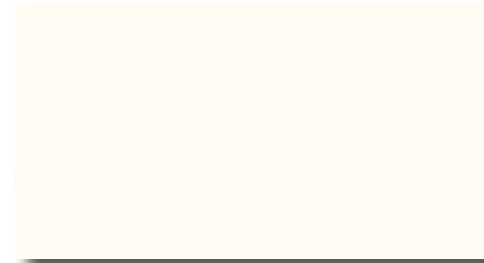
LCW-1



WC-9



WC-12



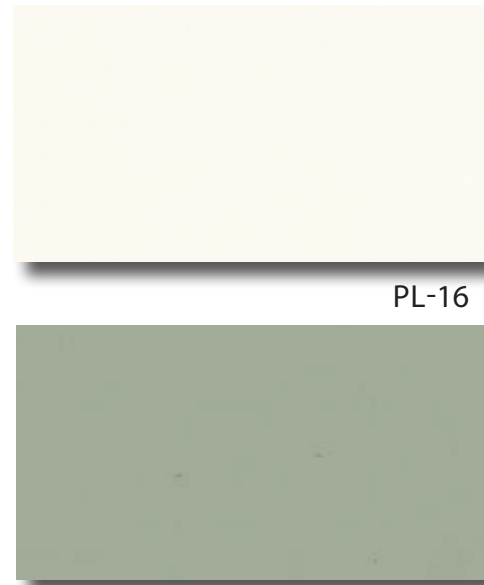
PL-26



PL-3



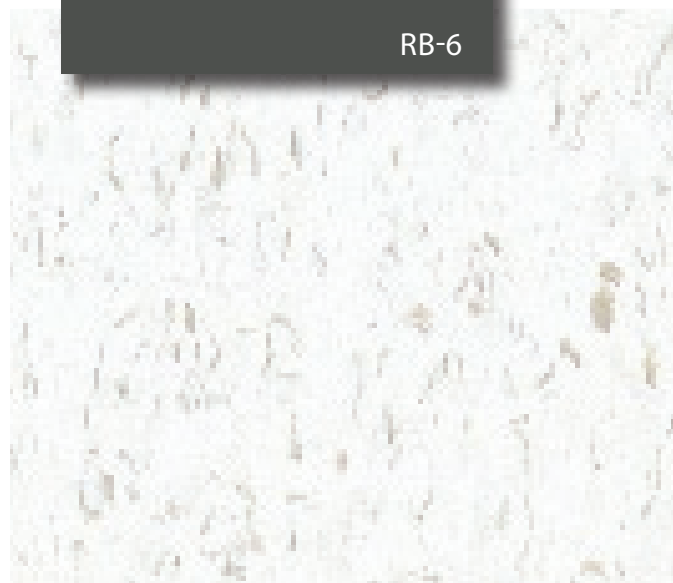
PT-33



PL-16



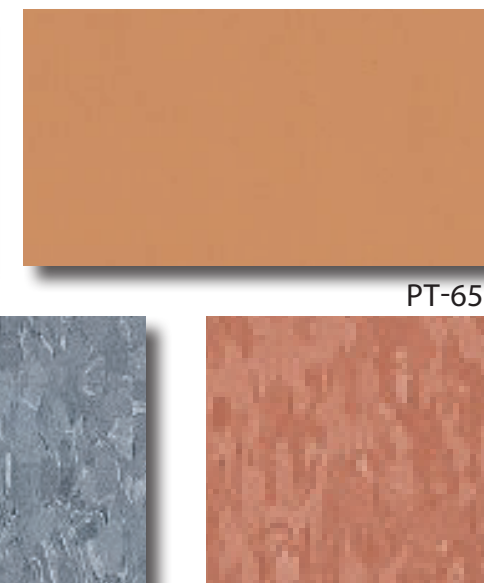
PT-39



RB-6



PT-59



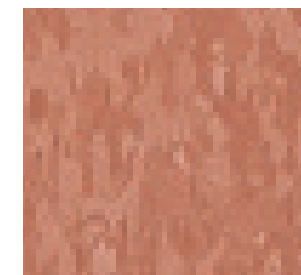
PT-65



VCT-3



VCT-4



VCT-16

THE UNIVERSITY OF TEXAS

MD Anderson
~~Cancer Center~~

FACILITIES
 MANAGEMENT
 OFFICE OF

FACILITIES PLANNING,
 DESIGN AND
 CONSTRUCTION

INTERIOR FINISH STANDARDS

FOR

OFF - CAMPUS LEASED SPACE

SHEET TITLE:

OFF-CAMPUS LEASED SPACE
LABS (Research)

LAST UPDATE:

01/14/2014

SHEET NO.:

11 OF 12

FILE NAME: ODGECBOCLPR1

PRINT

BACK TO
 T.O.C.

NEXT PAGE

FACILITIES
MANAGEMENT
OFFICE OF

FACILITIES PLANNING,
DESIGN AND
CONSTRUCTION

INTERIOR FINISH STANDARDS
FOR
OFF - CAMPUS LEASED SPACE

SHEET TITLE:

OFF-CAMPUS LEASED SPACE
DOCUMENT REVISION
HISTORY

LAST UPDATE:

01/14/2014

SHEET NO.:

12 OF 12

FILE NAME: ODGECBOCLPR1

DOCUMENT REVISION HISTORY			
Issue	Date	Revision Description	Revisor
Rev. 0	5/13 /09	Initial Adoption of Off-Campus Leased Space Interior Finishes.	JK, KB, CY
Rev. 1	7/6/09	VCT-16 Finish Specification	KB
Rev.2	01/14/2014	Changed MDA Logo	JKT