

TABLE OF CONTENTS

SHEET:

- 1 - TABLE OF CONTENTS
- 2 - FINISH SCHEDULE - 1/3
- 3 - FINISH SCHEDULE - 2/3
- 4 - FINISH SCHEDULE - 3/3
- 5 - CONFERENCE SPACE
- 6 - PUBLIC CORRIDORS
- 7 - INTERIOR CORRIDORS
- 8 - ELEVATOR LOBBIES
(FLOORS BASEMENT, 1 & 2)
- 9 - ELEVATOR LOBBIES
(UPPER FLOORS - FLOORS 3-11)
- 10 - OFFICE SPACE
- 11 - STORAGE ROOMS
- 12 - TOILETS
- 13 - WORKROOMS AND BREAKROOMS
- 14 - DOCUMENT REVISION HISTORY

Important Disclaimer: Colors presented in this file are provided for general color information only. Due to many different monitor settings on individual computers and different light sources - these finishes may appear from actual color. Actual samples are available from the FPDC/FPS library located on the 8th floor of FHB or may be ordered directly from manufacturers.



FANNIN / HOLCOMBE BUILDING

THE UNIVERSITY OF TEXAS

MDAnderson
Cancer Center

FACILITIES
MANAGEMENT
OFFICE OF

FACILITIES PLANNING
DESIGN AND
CONSTRUCTION

INTERIOR FINISH STANDARDS
FOR
6900 FANNIN
FANNIN/HOLCOMBE BUILDING
(FHB)

SHEET TITLE:

FHB
TABLE OF CONTENTS

LAST UPDATE:

08/23/2012

SHEET NO.:

1 OF 14

FILE NAME: ODGECBFHBR3.indd

PRINT

EXIT

NEXT PAGE

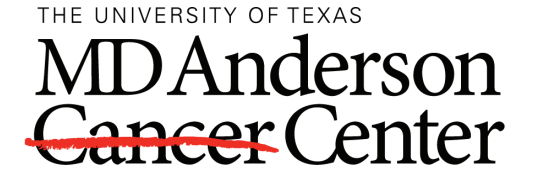
Interior Finish Standards
Fannin / Holcombe Bldg

6900 Fannin

Updated: 06/22/2015 (LCT)

This schedule is intended to convey the general MDACC "standard" products used in the indicated room types to assist with the **Design Development phase only** of renovation or new construction projects. Finish legends and room finish schedules for construction documents **MUST** be reviewed and approved by the MDACC Planner/Designer assigned to the project. All Planner/Designers are responsible for verifying the information herein for accuracy. Contact Facilities Planning, Design and Construction/Facilities Planning Services (FPS) at ext. 2-2207 to clarify "special" finishes and applications.

Room Type	Flooring	Base	Walls	Wallguards	Doors	Door Frames	Ceiling	Architectural Woodwork	Window Treatment	Other
Conference Space	<p>CPT-104 Lees "By the Book" Ingenious 337 24" x 24" Must install quarter-turned</p> <p><u>Historical</u> CPT-37 Lees "Heartland T" # D8442 (MDA# CL423) Capri # 307</p>	<p>RB-2 Roppe 4" High Coved Color: #RP 193-TS Black-Brown</p> <p>06/22/2015 Corrected color # to be RP 193-TS</p>	<p><u>Primary Field</u> PT-55 Benjamin Moore Color: Brandy Cream # OC-4 Satin Finish</p> <p><u>Accent Wall Options</u> PT-57 Benjamin Moore # 691 Dartmouth Green</p> <p>PT-60 Benjamin Moore # 720 BellaBlue</p> <p>PT-63 Benjamin Moore # 1413 Purple Haze</p> <p>PT-66 Benjamin Moore # 1208 Tuscany</p>	N/A	<p>PL-38 Nevamar Tangier Anigre # WA0002E</p> <p><u>Painted Door Applications</u> PT-55 Benjamin Moore # OC-4 Brandy Cream</p>	<p>AF-2 Raco "Classic" Anodized Aluminum Color: Clear Coat</p> <p>Note: Preferred finish. Black finish exist in some areas.</p> <p>PT-55 Benjamin Moore # OC-4 Brandy Cream</p>	<p>ACT-5 Armstrong Cortega # 769 2' x 2' medium texture White</p>	<p><u>Vertical Surfaces</u> PL-3 Formica #744 Lacewood</p> <p><u>Counter Tops</u> PL-10 Formica 7708-58 Flax Gauze <u>Edge Banding</u> WT-11 Doellken Wood Tape 6501 Flax Gauze</p> <p><u>Historical Counter Tops</u> PL-37 Wilsonart Burnished Spruce # 4797060</p>	<p>HLB-3? Hunter Douglas Mini blinds Brushed Aluminum # C065</p>	
Corridors (public)	<p>CPT-104 Lees "By the Book" Ingenious 337 24" x 24" Must install quarter-turned No Accent Carpet</p> <p><u>Historical Field</u> CPT-37 Lees "Heartland" #D8442 (MDA# CL423) 18" x 18" tile Color: Capri # 307</p> <p><u>Historical Accent</u> Lees "Colorbridge" 18" x 18" CPT-21: #537 Mirage CPT-48: #565 Pansy (Accent Carpet design to be approved by FIT)</p>	<p>RB-2 Roppe 4" High Coved Color: #RP 193-TS Black-Brown</p> <p>06/22/2015 Corrected color # to be RP 193-TS</p>	<p><u>Field</u> PT-55 Benjamin Moore Color: Brandy Cream # OC-4 Satin Finish</p>	N/A	<p>PL-38 Nevamar Tangier Anigre # WA0002E</p> <p><u>Painted Door Applications</u> PT-55 Benjamin Moore # OC-4 Brandy Cream</p>	<p>AF-2 Raco "Classic" Anodized Aluminum Color: Clear Coat</p> <p>Note: Preferred finish. Black finish exist in some areas.</p> <p>PT-55 Benjamin Moore # OC-4 Brandy Cream</p>	<p>ACT-5 Armstrong Cortega # 769 2' x 2' medium texture White</p>	N/A	N/A	



FACILITIES
MANAGEMENT
OFFICE OF
FACILITIES PLANNING
DESIGN AND
CONSTRUCTION

INTERIOR FINISH STANDARDS
FOR
6900 FANNIN
FANNIN/HOLCOMBEBUILDING
(FHB)

SHEET TITLE:
**FHB
FINISH SCHEDULE
1/3**

LAST UPDATE:
08/23/2012

SHEET NO.:
2 OF **14**

FILE NAME: ODGECBFHBR3.indd

Interior Finish Standards
Fannin / Holcombe Bldg

6900 Fannin

Updated: 06/22/2015 (LCT)

This schedule is intended to convey the general MDACC "standard" products used in the indicated room types to assist with the **Design Development phase only** of renovation or new construction projects.
 Finish legends and room finish schedules for construction documents **MUST** be reviewed and approved by the MDACC Planner/Designer assigned to the project.
 All Planner/Designers are responsible for verifying the information herein for accuracy.
 Contact Facilities Planning, Design and Construction/Facilities Planning Services (FPS) at ext. 2-2207 to clarify "special" finishes and applications.

Room Type	Flooring	Base	Walls	Wallguards	Doors	Door Frames	Ceiling	Architectural Woodwork	Window Treatment	Other
Elev. Lobby Public Basement Floor 1	Contact FPDC Dept. "Facilities Planning Section"	Contact FPDC Dept. "Facilities Planning Section"	<u>1st Floor Fabric Panels</u> FWC-10 Guilford of Maine Metropolis No. 3578 Color: Park Green #061	N/A	Contact FPDC Dept. "Facilities Planning Section"	N/A	N/A	N/A	N/A	
Elev. Lobby (upper flrs)	CPT-104 Lees "By the Book" Ingenious 337 24" x 24" Must install quarter-turned No Accent Carpet <u>Historical Field</u> CPT-37 Lees "Heartland" #D8442 (MDA# CL423) 18" x 18" tile	RB-2 Roppe 4" High Covered Color: #RP 193-TS Black-Brown 06/22/2015 Corrected color # to be RP 193-TS	<u>Field</u> PT-55 Benjamin Moore Color: Brandy Cream # OC-4 Satin Finish	N/A	<u>Elevator Doors</u> PT-83 Benjamin Moore Color: Shaker Beige #HC-45	<u>At Elevators</u> PT-83 Benjamin Moore Color: Shaker Beige #HC-45	PT-55 Benjamin Moore Color: Brandy Cream #OC-4	N/A	N/A	
Entry Vestibule Level 1	CPT-41 Lees Step Up Modular 24" x 24" Carpet Tile Color: #508 Mineral			N/A				N/A		
Office Space	CPT-104 Lees "By the Book" Ingenious 337 24" x 24" Must install quarter-turned <u>Historical</u> CPT-37 Lees "Heartland T" # D8442 (MDA# CL423) Capri # 307	RB-2 Roppe 4" High Covered Color: #RP 193-TS Black-Brown 06/22/2015 Corrected color # to be RP 193-TS	<u>Primary Field</u> PT-55 Benjamin Moore Color: Brandy Cream # OC-4 Satin Finish <u>Accent Wall Options</u> PT-57 Benjamin Moore # 691 Dartmouth Green PT-60 Benjamin Moore # 720 BellaBlue PT-63 Benjamin Moore # 1413 Purple Haze PT-66 Benjamin Moore # 1208 Tuscany	N/A	PL-38 Nevamar Tangier Anigre # WA0002E	AF-2 Raco "Classic" Anodized Aluminum Color: Clear Coat <i>Note: Preferred finish. Black finish exist in some areas.</i>	ACT-5 Armstrong Cortega # 769 2' x 2' medium texture White	<u>Vertical Surfaces</u> PL-3 Formica #744 Lacewood <u>Counter Tops</u> PL-10 Formica 7708-58 Flax Gauze <u>Edge Banding</u> WT-11 Doellken Wood Tape 6501 Flax Gauze <u>Historical</u> <u>Counter Tops</u> PL-37 Wilsonart Burnished Spruce # 4797060	HLB-3 Hunter Douglas Mini blinds Brushed Aluminum # C065	
Storage Room	VCT-24 Mannington "Essentials" #137 Sandrift 12"x12" Install ties in one direction <u>Historical</u> VCT-15 Mannington "Inspirations" #417 Cream Tones 12"x12" To be used w/ FT-5	RB-2 Roppe 4" High Covered Color: #RP 193-TS Black-Brown 06/22/2015 Corrected color # to be RP 193-TS	PT-55 Benjamin Moore Color: Brandy Cream # OC-4 Satin Finish	N/A	PL-38 Nevamar Tangier Anigre # WA0002E	AF-2 Raco "Classic" Anodized Aluminum Color: Clear Coat <i>Note: Preferred finish. Black finish exist in some areas.</i>	ACT-5 Armstrong Cortega # 769 2' x 2' medium texture White	PL-10 Formica 7708-58 Flax Gauze <u>Edge Banding</u> WT-11 Doellken Wood Tape 6501 Flax Gauze <u>Historical</u> PL-29 Nevamar Taupe Matrix textured # MR-2-5T	N/A	

FACILITIES
 MANAGEMENT
 OFFICE OF

FACILITIES PLANNING
 DESIGN AND
 CONSTRUCTION

INTERIOR FINISH STANDARDS
 FOR
 6900 FANNIN
 FANNIN/HOLCOMBE BUILDING
 (FHB)

SHEET TITLE:

FHB
 FINISH SCHEDULE
 2/3

LAST UPDATE:

08/23/2012

SHEET NO.:

3 OF 14

FILE NAME: ODGECBFHBR3.indd

PRINT

BACK TO
T.O.C.

NEXT PAGE

Interior Finish Standards
Fannin / Holcombe Bldg

6900 Fannin

Updated: 06/22/2015 (LCT)

This schedule is intended to convey the general MDACC "standard" products used in the indicated room types to assist with the **Design Development phase only** of renovation or new construction projects.
 Finish legends and room finish schedules for construction documents **MUST** be reviewed and approved by the MDACC Planner/Designer assigned to the project.
 All Planner/Designers are responsible for verifying the information herein for accuracy.
 Contact Facilities Planning, Design and Construction/Facilities Planning Services (FPS) at ext. 2-2207 to clarify "special" finishes and applications.

Room Type	Flooring	Base	Walls	Wallguards	Doors	Door Frames	Ceiling	Architectural Woodwork	Window Treatment	Other
Toilets	TLF-18 DalTile Diamante, 12"x12 Color: P024 Sabbia, Matte	TLW-11 DalTile Diamante, 4"x12" trim Color: P024 Sabbia Polished finish	TLW-11 DalTile Diamante, 12"x12" Color: P024 Sabbia, Polished <u>Accent Tile</u> TLW-16 DalTile Diamante, 12"x12" Color P031 Verde, Polished <u>Primary Field Paint</u> PT-55 Benjamin Moore Color: Brandy Cream # OC-4 Satin Finish <u>Accent Wall Option Paint</u> PT-82 Benjamin Moore # 700 Enchanted Forest	N/A	PL-38 Nevamar Tangier Anigre # WA0002E	AF-2 Raco "Classic" Anodized Aluminum Color: Clear Coat <i>Note:</i> Preferred finish. Black finish exist in some areas.	ACT-5 Armstrong Cortega # 769 2' x 2' medium texture White	<u>Sink Counter</u> SSM-13 Dupont "Corian" Color: Rainforest <u>Sink</u> SSM-8 Dupont "Corian" Color: Bisque <u>Toilet Compartment</u> PLTC-2 with PL-3 Formica #744 Lacewood (over phenolic resin core)	N/A	
Workroom/ Breakroom	VCT-24 Mannington "Essentials" #137 Sandrift 12"x12" Install tiles in one direction <u>Historical</u> VCT-15 Mannington "Inspirations" #417 Cream Tones 12"x12" To be used w/ FT-5	RB-2 Roppe 4" High Coved Color: #RP 193-TS Black-Brown 06/22/2015 Corrected color # to be RP 193-TS	PT-55 Benjamin Moore Color: Brandy Cream # OC-4 Satin Finish	N/A	PL-38 Nevamar Tangier Anigre # WA0002E	AF-2 Raco "Classic" Anodized Aluminum Color: Clear Coat <i>Note:</i> Preferred finish. Black finish exist in some areas.	ACT-5 Armstrong Cortega # 769 2' x 2' medium texture White	<u>Vertical Surfaces</u> PL-3 Formica #744 Lacewood <u>Counter Tops</u> PL-10 Formica 7708-58 Flax Gauze <u>Edge Banding</u> WT-11 Doellken Wood Tape 6501 Flax Gauze <u>Historical</u> <u>Counter Tops</u> PL-37 Wilsonart Burnished Spruce # 4797060	HLB-3? Hunter Douglas Mini blinds Brushed Aluminum # C065	

FACILITIES
 MANAGEMENT
 OFFICE OF

FACILITIES PLANNING
 DESIGN AND
 CONSTRUCTION

INTERIOR FINISH STANDARDS
 FOR
 6900 FANNIN
 FANNIN/HOLCOMBE BUILDING
 (FHB)

SHEET TITLE:

FHB
 FINISH SCHEDULE
 3/3

LAST UPDATE:

08/23/2012

SHEET NO.:

4 OF 14

FILE NAME: ODGECBFHBR3.indd

PRINT

BACK TO
T.O.C.

NEXT PAGE

FINISH LEGEND

CEILING

ACT-5 Armstrong World Industries, Inc.
 No.: 769 Cortega
 Color: White
 Finish: Medium Texture
 Size: 2'x2'x5/8"

DOORS/ FRAMES

PL-38 Nevamar
 No.: WA0002E, Tangier Anigre

AF-2 Raco "Classic", Anodized Aluminum
 Color: Clear Coat

WALLS

PT-55 Benjamin Moore (Field)
 Color: OC-4, Brandy Cream
 Finish: Satin

PT-57 Benjamin Moore (Accent)
 Color: 691, Dartmouth Green
 Finish: Satin

PT-60 Benjamin Moore (Accent)
 Color: 720, Bella Blue
 Finish: Satin

PT-63 Benjamin Moore (Accent)
 Color: 1413, Purple Haze
 Finish: Satin

PT-66 Benjamin Moore (Accent)
 Color: 1208, Tuscany
 Finish: Satin

FLOORS/ BASE

CPT-37 Lees "Heartland", 18"x18" Tile
 No.: D8442
 Color: 307, Capri

RB-2 Roppe "Pinnacle", 4" Coved
 Color: RP93, Black/Brown

ARCHITECTURAL WOODWORK

PL-3 Formica (Vertical Surfaces)
 No.: 744, Lacewood

PL-37 Wilsonart (Horizontal Surfaces)
 No.: 4797060, Burnished Spruce

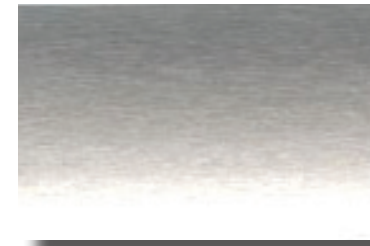
WINDOW TREATMENTS

HLB-3 Hunter Douglas Mini Blinds
 Color: C065, Brushed Aluminum

Important Disclaimer: Colors presented in this file are provided for general color information only. Due to many different monitor settings on individual computers and different light sources - these finishes may appear from actual color. Actual samples are available from the FPDC/FPS library located on the 8th floor of FHB or may be ordered directly from manufacturers.



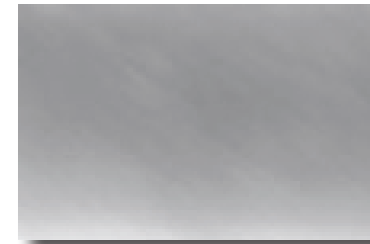
ACT-5



HLB-3



PT-57



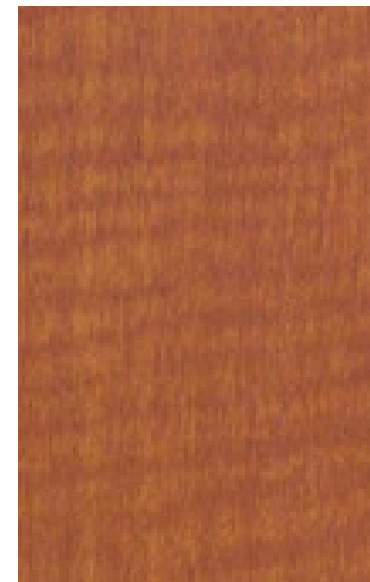
AF-2



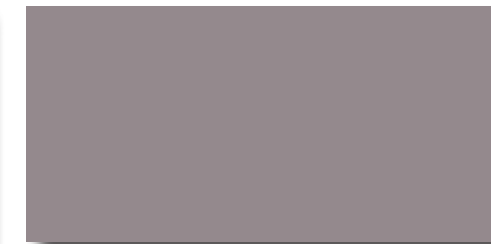
PT-60



PT-55



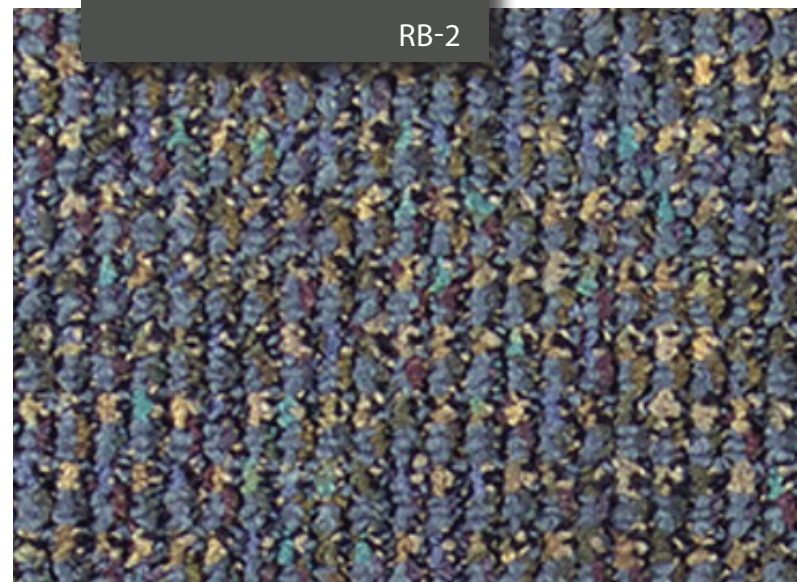
PL-38



PT-63



PT-66



RB-2



PL-37



PL-3

SHEET TITLE:

FHB
 CONFERENCE SPACE

LAST UPDATE:

08/23/2012

SHEET NO.:

5 OF 14

FILE NAME: ODGECBFHBR3.indd

PRINT

BACK TO
 T.O.C.

NEXT PAGE

FINISH LEGEND

CEILING

ACT-5 Armstrong World Industries, Inc.
No.: 769 Cortega
Color: White
Finish: Medium Texture
Size: 2'x2'x5/8"

DOORS/FRAMES

PL-38 Nevamar
No.: WA0002E, Tangier Anigre
PT-55 Benjamin Moore
Color: OC-4, Brandy Cream
AF-2 Raco "Classic", Anodized Aluminum
Color: Clear Coat

WALLS

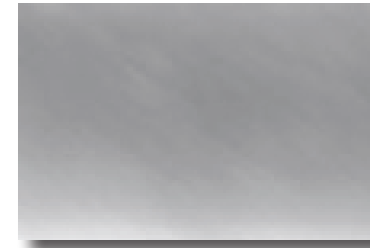
PT-55 Benjamin Moore (Field)
Color: OC-4, Brandy Cream
Finish: Satin

FLOORS/BASE

CPT-37 Lees "Heartland", 18"x18" Tile
No.: D8442
Color: 307, Capri
CPT-21 Lees "Colorbridge", 18" x 18" Tile
Color: 537, Mirage (Accent)
CPT-48 Lees "Colorbridge", 18" x 18" Tile
Color: 565, Pansy (Accent)
RB-2 Roppe "Pinnacle", 4" Coved
Color: RP93, Black/Brown



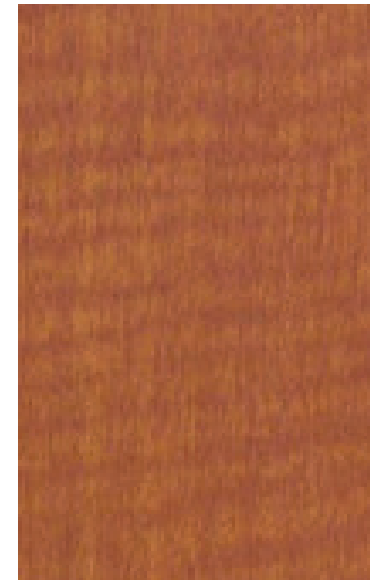
ACT-5



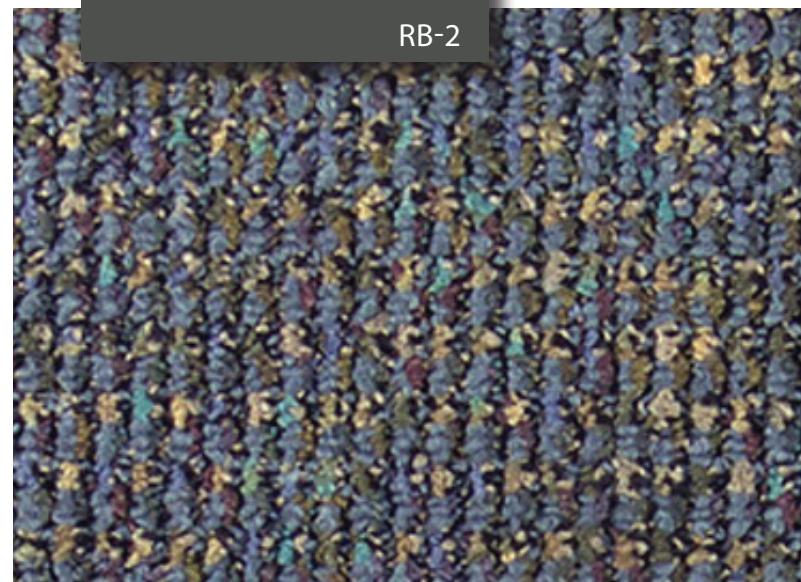
AF-2



PT-55

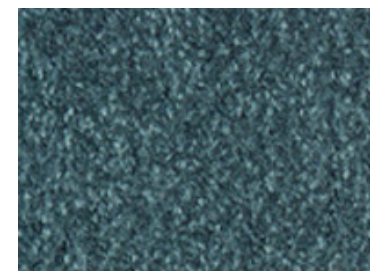


PL-38

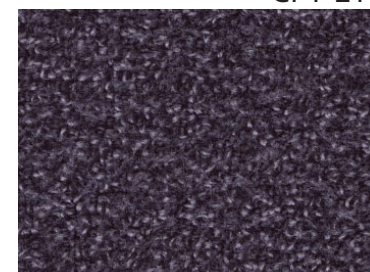


RB-2

CPT-37



CPT-21



CPT-48

Important Disclaimer: Colors presented in this file are provided for general color information only. Due to many different monitor settings on individual computers and different light sources - these finishes may appear from actual color. Actual samples are available from the FPDC/FPS library located on the 8th floor of FHB or may be ordered directly from manufacturers.

THE UNIVERSITY OF TEXAS

MDAnderson
~~Cancer Center~~

FACILITIES
MANAGEMENT
OFFICE OF

FACILITIES PLANNING
DESIGN AND
CONSTRUCTION

INTERIOR FINISH STANDARDS
FOR
6900 FANNIN
FANNIN/HOLCOMB BUILDING
(FHB)

SHEET TITLE:

FHB
PUBLIC CORRIDORS

LAST UPDATE:

08/23/2012

SHEET NO.:

6 OF 14

FILE NAME: ODGECBFHBR3.indd

PRINT

BACK TO
T.O.C.

NEXT PAGE

FINISH LEGEND

CEILING

ACT-5 Armstrong World Industries, Inc.
 No.: 769 Cortega
 Color: White
 Finish: Medium Texture
 Size: 2'x2'x5/8"

DOORS/FRAMES

PL-38 Nevamar
 No.: WA0002E, Tangier Anigre
 AF-2 Raco "Classic", Anodized Aluminum
 Color: Clear Coat

WALLS

PT-55 Benjamin Moore (Field)
 Color: OC-4, Brandy Cream
 Finish: Satin
 PT-57 Benjamin Moore (Accent)
 Color: 691, Dartmouth Green
 Finish: Satin
 PT-60 Benjamin Moore (Accent)
 Color: 720, Bella Blue
 Finish: Satin
 PT-63 Benjamin Moore (Accent)
 Color: 1413, Purple Haze
 Finish: Satin
 PT-66 Benjamin Moore (Accent)
 Color: 1208, Tuscany
 Finish: Satin

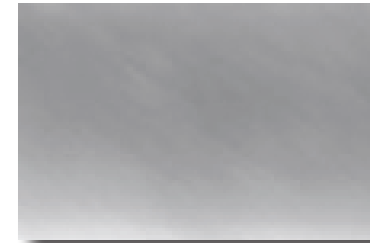
FLOORS/ BASE

CPT-37 Lees "Heartland", 18"x18" Tile
 No.: D8442
 Color: 307, Capri
 CPT-21 Lees "Colorbridge", 18" x 18" Tile
 Color: 537, Mirage (Accent)
 CPT-48 Lees "Colorbridge", 18" x 18" Tile
 Color: 565, Pansy (Accent)
 RB-2 Roppe "Pinnacle", 4" Coved
 Color: RP93, Black/Brown

Important Disclaimer: Colors presented in this file are provided for general color information only. Due to many different monitor settings on individual computers and different light sources - these finishes may appear from actual color. Actual samples are available from the FPDC/FPS library located on the 8th floor of FHB or may be ordered directly from manufacturers.



ACT-5



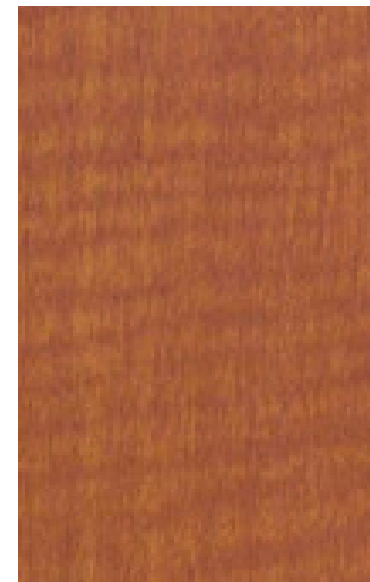
AF-2



PT-57



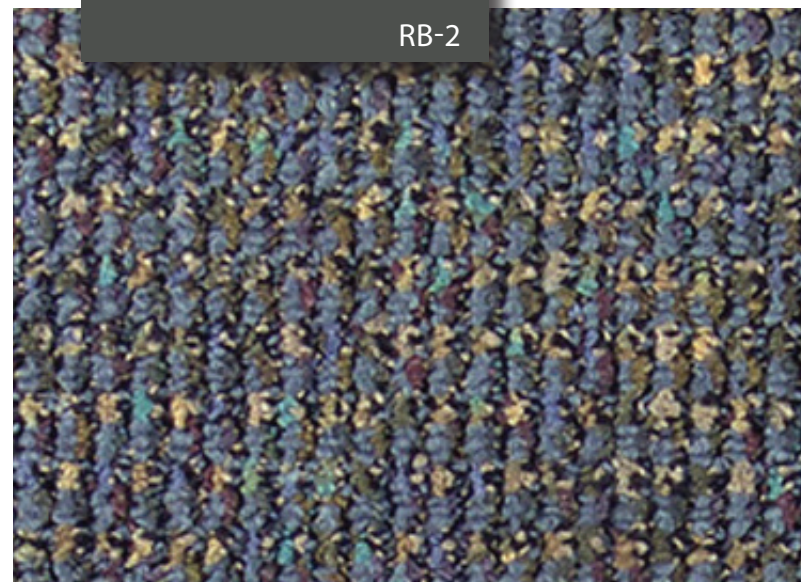
PT-55



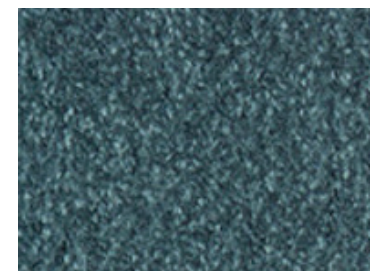
PL-38



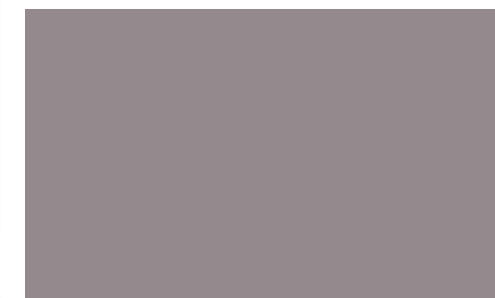
PT-60



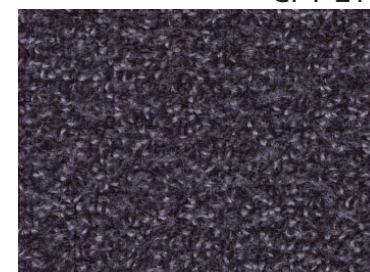
RB-2



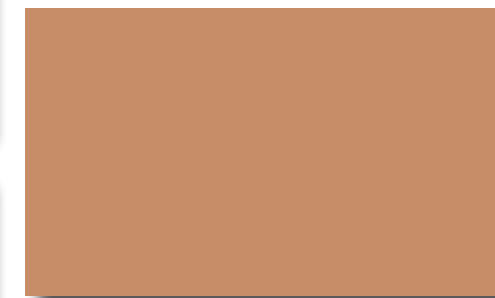
CPT-21



PT-63



CPT-48



PT-66

THE UNIVERSITY OF TEXAS

MD Anderson
~~Cancer Center~~

FACILITIES
 MANAGEMENT
 OFFICE OF

FACILITIES PLANNING
 DESIGN AND
 CONSTRUCTION

INTERIOR FINISH STANDARDS
 FOR
 6900 FANNIN
 FANNIN/HOLCOMB BUILDING
 (FHB)

SHEET TITLE:

FHB
 INTERIOR CORRIDORS

LAST UPDATE:

08/23/2012

SHEET NO.:

7 OF 14

FILE NAME: ODGECBFHBR3.indd

PRINT

BACK TO
 T.O.C.

NEXT PAGE

FINISH LEGEND

CEILING

Contact
FPDC Dept.
"Facilities Planning Section"

DOORS/ FRAMES

Contact
FPDC Dept.
"Facilities Planning Section"

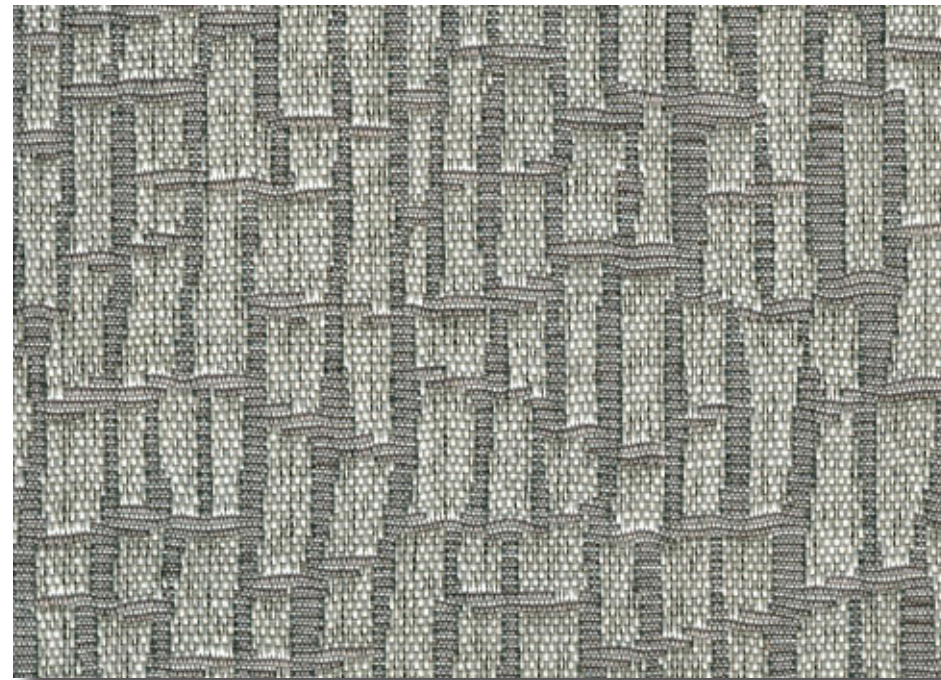
WALLS

Contact
FPDC Dept.
"Facilities Planning Section"

FWC-10 Guilford of Maine (1st. Fl. Fabric Panels)
Metropolis No.: 3578
Color: Park Green #061

FLOORS/ BASE

Contact
FPDC Dept.
"Facilities Planning Section"



FWC-10

Important Disclaimer: Colors presented in this file are provided for general color information only. Due to many different monitor settings on individual computers and different light sources - these finishes may appear from actual color. Actual samples are available from the FPDC/FPS library located on the 8th floor of FHB or may be ordered directly from manufacturers.

THE UNIVERSITY OF TEXAS

MD Anderson
Cancer Center

FACILITIES
MANAGEMENT
OFFICE OF

FACILITIES PLANNING
DESIGN AND
CONSTRUCTION

INTERIOR FINISH STANDARDS
FOR
6900 FANNIN
FANNIN/HOLCOMB BUILDING
(FHB)

SHEET TITLE:

FHB
ELEVATOR LOBBIES
(FLOORS BASEMENT, 1 & 2)

LAST UPDATE:

08/23/2012

SHEET NO.:

8 OF 14

FILE NAME: ODGECBFHBR3.indd

PRINT

BACK TO
T.O.C.

NEXT PAGE

FINISH LEGEND

CEILING

PT-55 Benjamin Moore
Color: OC-4, Brandy Cream
Finish: Satin

DOORS/ FRAMES

PT-83 Benjamin Moore (Elevator Doors)
Color: Shaker Beige #HC-45

WALLS

PT-55 Benjamin Moore (Field)
Color: OC-4 Brandy Cream
Finish: Satin

FLOORS/ BASE

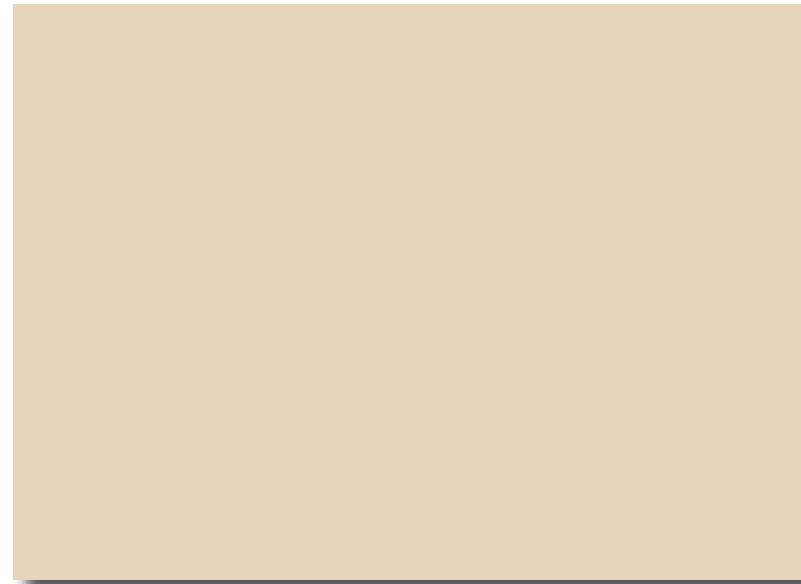
CPT-37 Lees "Heartland", 18"x18" Tile
No.: D8442
Color: 307, Capri

CPT-21 Lees "Colorbridge", 18" x 18" Tile
Color: 537, Mirage (Accent)

CPT-48 Lees "Colorbridge", 18" x 18" Tile
Color: 565, Pansy (Accent)

RB-2 Roppe "Pinnacle", 4" Coved
Color: RP93, Black/Brown

Important Disclaimer: Colors presented in this file are provided for general color information only. Due to many different monitor settings on individual computers and different light sources - these finishes may appear from actual color. Actual samples are available from the FPDC/FPS library located on the 8th floor of FHB or may be ordered directly from manufacturers.



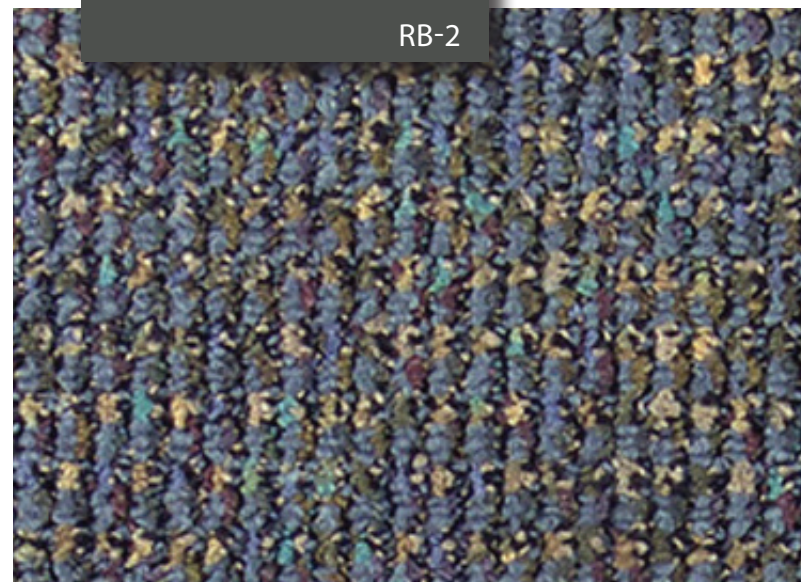
PT-55



PT-55



PT-83

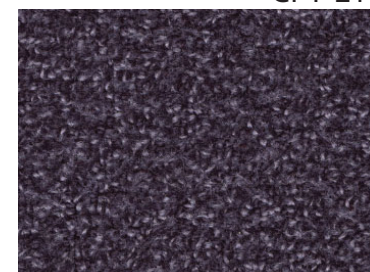


RB-2

CPT-37



CPT-21



CPT-48

THE UNIVERSITY OF TEXAS

MD Anderson Cancer Center

FACILITIES MANAGEMENT OFFICE OF

FACILITIES PLANNING DESIGN AND CONSTRUCTION

INTERIOR FINISH STANDARDS
FOR
6900 FANNIN
FANNIN/HOLCOMB BUILDING
(FHB)

SHEET TITLE:

FHB ELEVATOR LOBBIES (UPPER FLOORS - FLOORS 3-11)

LAST UPDATE:

08/23/2012

SHEET NO.:

9 OF 14

FILE NAME: ODGECBFHBR3.indd

PRINT

BACK TO
T.O.C.

NEXT PAGE

FINISH LEGEND

CEILING

ACT-5 Armstrong World Industries, Inc.
 No.: 769 Cortega
 Color: White
 Finish: Medium Texture
 Size: 2'x2'x5/8"

DOORS/ FRAMES

PL-38 Nevamar
 No.: WA0002E, Tangier Anigre

AF-2 Raco "Classic", Anodized Aluminum
 Color: Clear Coat

WALLS

PT-55 Benjamin Moore (Field)
 Color: OC-4, Brandy Cream
 Finish: Satin

PT-57 Benjamin Moore (Accent)
 Color: 691, Dartmouth Green
 Finish: Satin

PT-60 Benjamin Moore (Accent)
 Color: 720, Bella Blue
 Finish: Satin

PT-63 Benjamin Moore (Accent)
 Color: 1413, Purple Haze
 Finish: Satin

PT-66 Benjamin Moore (Accent)
 Color: 1208, Tuscany
 Finish: Satin

FLOORS/ BASE

CPT-37 Lees "Heartland", 18"x18" Tile
 No.: D8442
 Color: 307, Capri

RB-2 Roppe "Pinnacle", 4" Coved
 Color: RP93, Black/Brown

ARCHITECTURAL WOODWORK

PL-3 Formica (Vertical Surfaces)
 No.: 744, Lacewood

PL-37 Wilsonart (Horizontal Surfaces)
 No.: 4797060, Burnished Spruce

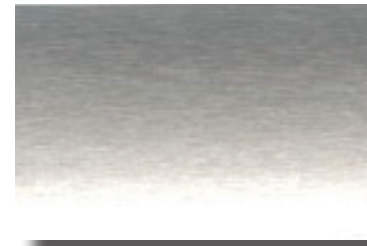
WINDOW TREATMENTS

HLB-3 Hunter Douglas Mini Blinds
 Color: C065, Brushed Aluminum

Important Disclaimer: Colors presented in this file are provided for general color information only. Due to many different monitor settings on individual computers and different light sources - these finishes may appear from actual color. Actual samples are available from the FPDC/FPS library located on the 8th floor of FHB or may be ordered directly from manufacturers.



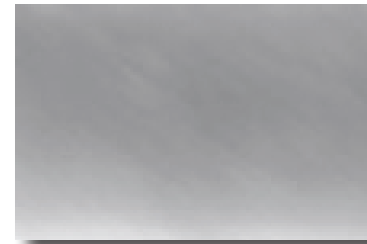
ACT-5



HLB-3



PT-57



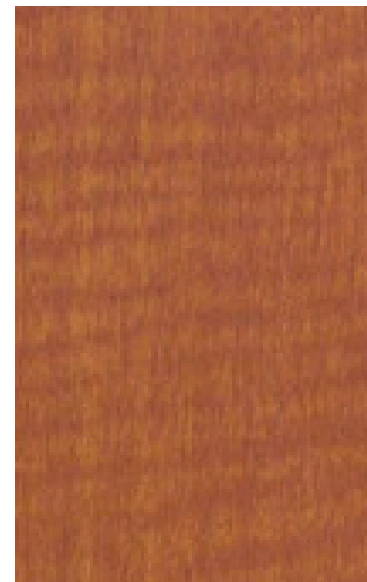
AF-2



PT-60



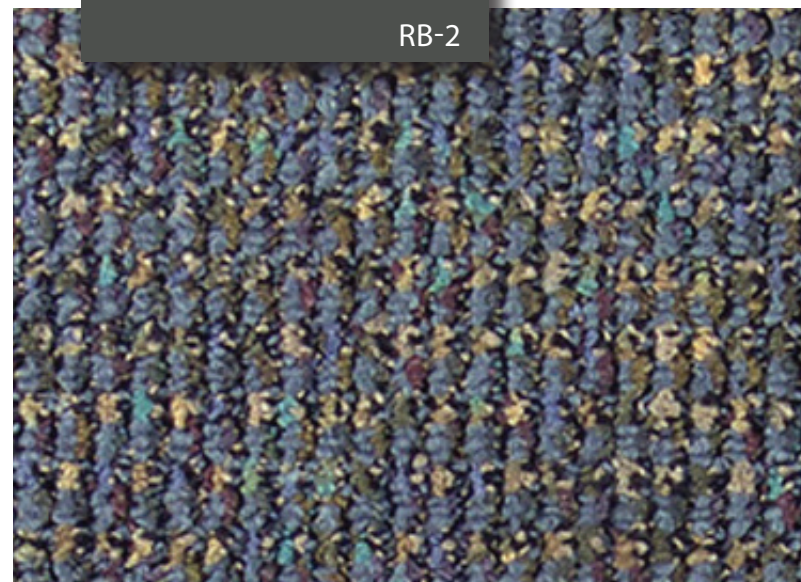
PT-55



PL-38



PT-63



RB-2



PL-37



PL-3

FACILITIES MANAGEMENT OFFICE OF

FACILITIES PLANNING DESIGN AND CONSTRUCTION

INTERIOR FINISH STANDARDS FOR 6900 FANNIN FANNIN/HOLCOMB BUILDING (FHB)

SHEET TITLE:

FHB OFFICE SPACE

LAST UPDATE:

08/23/2012

SHEET NO.:

10 OF 14

FILE NAME: ODGECBFHBR3.indd

PRINT

BACK TO
 T.O.C.

NEXT PAGE

FINISH LEGEND

CEILING

ACT-5 Armstrong World Industries, Inc.
 No.: 769 Cortega
 Color: White
 Finish: Medium Texture
 Size: 2'x2'x5/8"

DOORS/ FRAMES

PL-38 Nevamar
 No.: WA0002E, Tangier Anigre

AF-2 Raco "Classic", Anodized Aluminum
 Color: Clear Coat

WALLS

PT-55 Benjamin Moore (Field)
 Color: OC-4, Brandy Cream
 Finish: Satin

FLOORS/ BASE

VCT-15 Mannington Commercial
 "Inspirations" 12" x 12"
 Color: 417, Cream Tones

RB-2 Roppe "Pinnacle", 4" Coved
 Color: RP93, Black/Brown

ARCHITECTURAL WOODWORK

PL-29 Nevamar
 No.: MR-2-5T, Taupe Matrix Textured

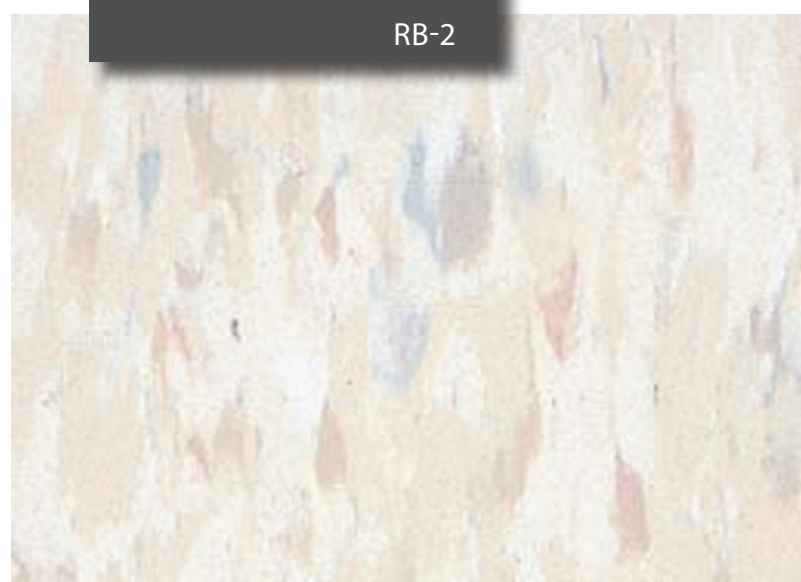
Important Disclaimer: Colors presented in this file are provided for general color information only. Due to many different monitor settings on individual computers and different light sources - these finishes may appear from actual color. Actual samples are available from the FPDC/FPS library located on the 8th floor of FHB or may be ordered directly from manufacturers.



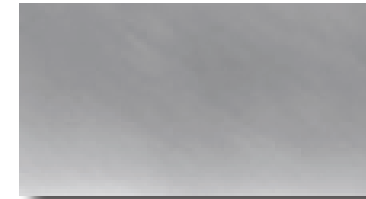
ACT-5



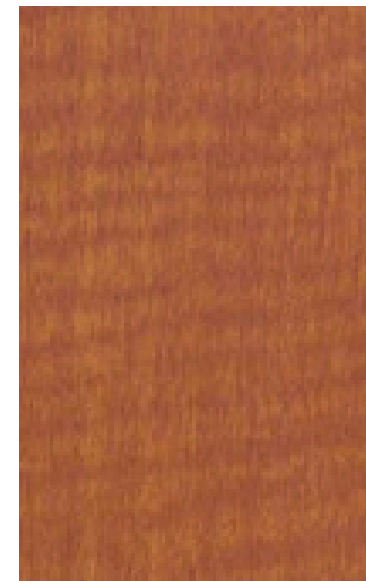
PT-55



VCT-15



AF-2



PL-38



PL-29

THE UNIVERSITY OF TEXAS

MD Anderson
~~Cancer Center~~

FACILITIES
 MANAGEMENT
 OFFICE OF

FACILITIES PLANNING
 DESIGN AND
 CONSTRUCTION

INTERIOR FINISH STANDARDS
 FOR
 6900 FANNIN
 FANNIN/HOLCOMB BUILDING
 (FHB)

SHEET TITLE:

FHB
 STORAGE ROOMS

LAST UPDATE:

08/23/2012

SHEET NO.:

11 OF 14

FILE NAME: ODGECBFHBR3.indd

PRINT

BACK TO
 T.O.C.

NEXT PAGE

FINISH LEGEND

CEILING

ACT-5 Armstrong World Industries, Inc.
 No.: 769 Cortega
 Color: White
 Finish: Medium Texture
 Size: 2'x2'x5/8"

DOORS/ FRAMES

PL-38 Nevamar
 No.: WA0002E, Tangier Anigre
 AF-2 Raco "Classic", Anodized Aluminum
 Color: Clear Coat

WALLS

PT-55 Benjamin Moore (Field)
 Color: OC-4, Brandy Cream
 Finish: Satin
 PT-82 Benjamin Moore (Accent)
 Color: 700, Enchanted Forest
 Finish: Satin
 TLW-11 DalTile, "Diamante", 12"x12" (Field)
 Color: PO24 Sabbia
 Finish: Polished
 TLW-16 DalTile, "Diamante", 12"x12" (Accent)
 Color: PO31 Verde.
 Finish: Polished

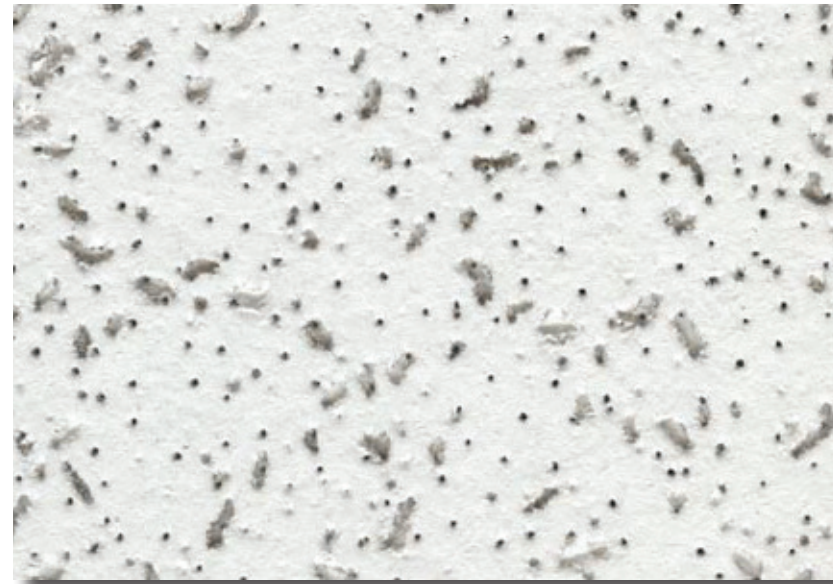
FLOORS/ BASE

TLF-18 DalTile, "Diamante", 12"x12" (Field)
 Color: PO24 Sabbia
 Finish: Matte
 TLW-11 DalTile, "Diamante", 4"x12" Trim
 Color: PO24 Sabbia
 Finish: Polished

ARCHITECTURAL WOODWORK

PL-38 Nevamar
 No.: WA0002E, Tangier Anigre
 PL-3 Formica (Partitions-overphenolicresincore)
 Color: #744 Lacewood
 SSM-8 Dupon, "Corian" (Sink)
 Color: Bisque
 SSM-13 Dupon, "Corian" (Sink Counter)
 Color: Rainforest

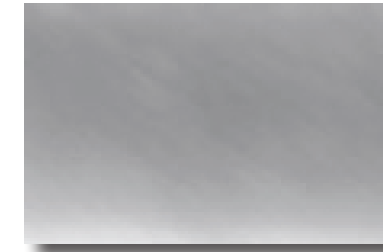
Important Disclaimer: Colors presented in this file are provided for general color information only. Due to many different monitor settings on individual computers and different light sources - these finishes may appear from actual color. Actual samples are available from the FPDC/FPS library located on the 8th floor of FHB or may be ordered directly from manufacturers.



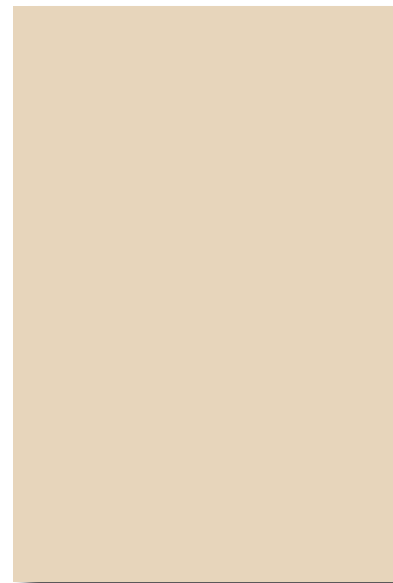
ACT-5



PL-38



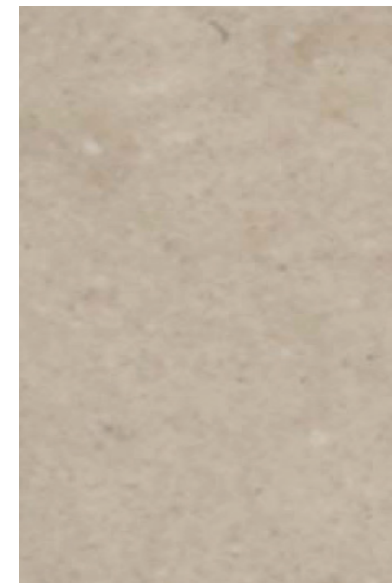
AF-2



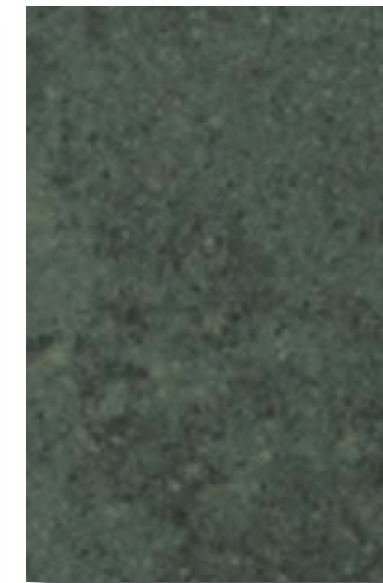
PT-55



PL-82



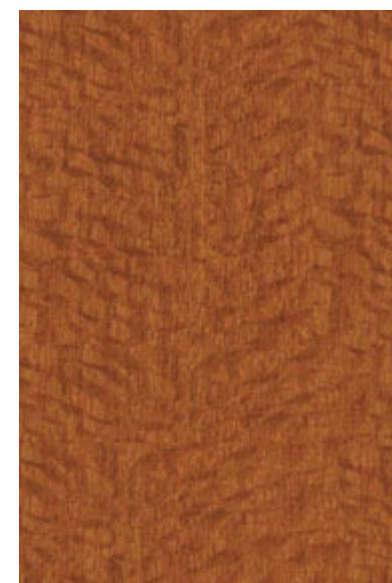
TLW-11



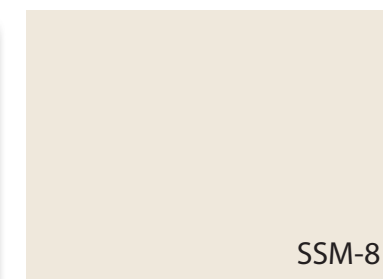
TLW-16



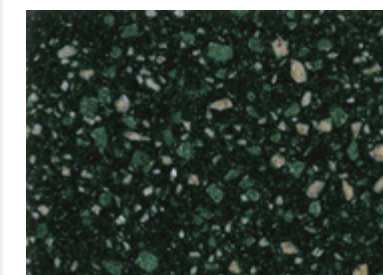
TLF-18



PL-3



SSM-8



SSM-13

SHEET TITLE:

FHB
 TOILETS

LAST UPDATE:

08/23/2012

SHEET NO.:

12 OF 14

FILE NAME: ODGECBFHBR3.indd

PRINT

BACK TO
 T.O.C.

NEXT PAGE

FINISH LEGEND

CEILING

ACT-5 Armstrong World Industries, Inc.
No.: 769 Cortega
Color: White
Finish: Medium Texture
Size: 2'x2'x5/8"

DOORS/ FRAMES

PL-38 Nevamar
No.: WA0002E, Tangier Anigre

AF-2 Raco "Classic", Anodized Aluminum
Color: Clear Coat

WALLS

PT-55 Benjamin Moore (Field)
Color: OC-4, Brandy Cream
Finish: Satin

FLOORS/ BASE

VCT-15 Mannington Commercial
"Inspirations" 12" x 12"
Color: 417, Cream Tones

RB-2 Roppe "Pinnacle", 4" Coved
Color: RP93, Black/Brown

ARCHITECTURAL WOODWORK

PL-3 Formica (Vertical Surfaces)
No.: 744, Lacewood

PL-37 Wilsonart (Horizontal Surfaces)
No.: 4797060, Burnished Spruce

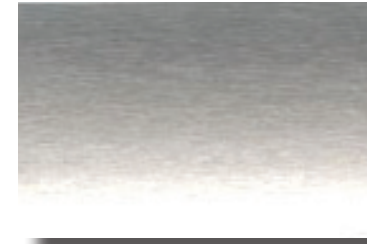
WINDOW TREATMENTS

HLB-3 Hunter Douglas Mini Blinds
Color: C065, Brushed Aluminum

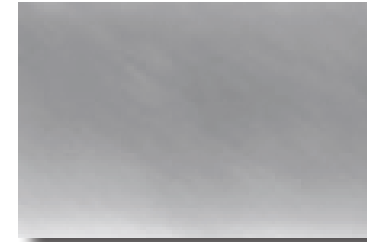
Important Disclaimer: Colors presented in this file are provided for general color information only. Due to many different monitor settings on individual computers and different light sources - these finishes may appear from actual color. Actual samples are available from the FPDC/FPS library located on the 8th floor of FHB or may be ordered directly from manufacturers.



ACT-5



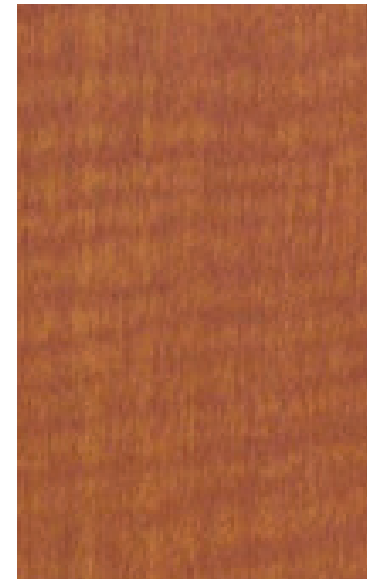
HLB-3



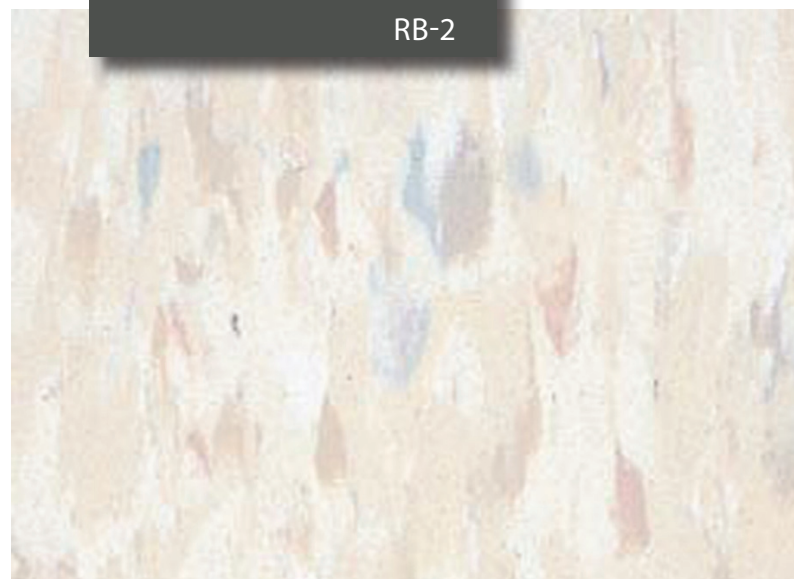
AF-2



PT-55



PL-38



RB-2

VCT-15



PL-37



PL-3

THE UNIVERSITY OF TEXAS

MD Anderson
~~Cancer Center~~

FACILITIES
MANAGEMENT
OFFICE OF

FACILITIES PLANNING
DESIGN AND
CONSTRUCTION

INTERIOR FINISH STANDARDS
FOR
6900 FANNIN
FANNIN/HOLCOMB BUILDING
(FHB)

SHEET TITLE:

FHB
WORKROOMS AND
BREAKROOMS

LAST UPDATE:

08/23/2012

SHEET NO.:

13 OF 14

FILE NAME: ODGECBFHBR3.indd

PRINT

BACK TO
T.O.C.

NEXT PAGE

DOCUMENT REVISION HISTORY			
Issue	Date	Revision Description	Revisor
Rev. 0	2/24/09	Initial Adoption of FHB Interior Finishes.	JK, KB, CY
Rev.1	07/08/2010	Revised MDA logo.	JKT
Rev. 2	08/21/2011	Revised finish schedule and re-linked.	JKT
Rev. 3	08/23/2012	Revised finish schedule and re-linked.	LT/JKT

THE UNIVERSITY OF TEXAS
MD Anderson
~~Cancer Center~~

FACILITIES
MANAGEMENT
OFFICE OF

FACILITIES PLANNING
DESIGN AND
CONSTRUCTION

INTERIOR FINISH STANDARDS
FOR
6900 FANNIN
FANNIN/HOLCOMB BUILDING
(FHB)

SHEET TITLE:

FHB
DOCUMENT REVISION
HISTORY

LAST UPDATE:

08/23/2012

SHEET NO.:

14 OF 14

FILE NAME: ODGECBFHBR3.indd