

TABLE OF CONTENTS

SHEET:

- 1 - TABLE OF CONTENTS
- 2 - FINISH SCHEDULE - 1/6
- 3 - FINISH SCHEDULE - 2/6
- 4 - FINISH SCHEDULE - 3/6
- 5 - FINISH SCHEDULE - 4/6
- 6 - FINISH SCHEDULE - 5/6
- 7 - FINISH SCHEDULE - 6/6
- 8 - BREAKROOM&STAFFLOCKERROOM
- 9 - CONFERENCE(FLOOR8CONF.CENTER)
- 10 - CONFERENCE ROOMS
- 11 - CORRIDOR (PUBLIC)
- 12 - DRESSING ROOM (OUTPATIENT CLINIC)
- 13 - RECEPTION (OUTPATIENT CLINIC)
- 14 - SUB-WAITING (OUTPATIENT CLINIC)
- 15 - EXAM ROOM &
TREATMENTROOM(OUTPATIENTCLINIC)
- 16 - CLEAN/DIRTY LINEN
(OUTPATIENT CLINIC)
- 17 - PUBLIC DINING (Cool Beans Cafe)
- 18 - GENERAL OFFICE AREAS
- 19 - ELEVATOR LOBBY (FLOOR 1)
- 20 - ELEVATOR LOBBY (FLOOR 2)
- 21 - ELEVATOR LOBBY (FLOOR 3-7)
- 22 - ELEVATOR LOBBY (FLOOR 8)
- 23 - STORAGE ROOM
- 24 - PUBLIC TOILETS
- 25 - CPB DOCUMENT REVISION
HISTORY

Important Disclaimer: Colors presented in this file are provided for general color information only. Due to many different monitor settings on individual computers and different light sources - these finishes may appear from actual color. Actual samples are available from the FPDC/FPS library located on the 8th floor of FHB or may be ordered directly from manufacturers.



CANCER PREVENTION BUILDING

THE UNIVERSITY OF TEXAS

MD Anderson
Cancer Center

FACILITIES MANAGEMENT OFFICE OF

FACILITIES PLANNING,
DESIGN AND
CONSTRUCTION

INTERIOR FINISH STANDARDS
FOR
1155 PRESSLER
CANCERPREVENTIONBUILDING
(CPB)

SHEET TITLE:

CPB TABLE OF CONTENTS

LAST UPDATE:

01/05/2016

SHEET NO.:

1 OF 25

FILE NAME: ODGECBCPBR3.indd

PRINT

EXIT

NEXT PAGE

Interior Finish Standards

Cancer Prevention Bldg (CPB)

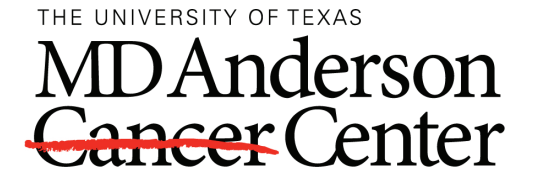
1155 Pressler

Updated : 03/02/2015 (LCT)

This schedule is intended to convey the general MDACC "standard" products used in the indicated room types to assist with the **Design Development phase only** of renovation or new construction projects. Finish legends and room finish schedules for construction documents **MUST** be reviewed and approved by the MDACC Planner/Designer assigned to the project. All Planner/Designers are responsible for verifying the information herein for accuracy. Contact Facilities Planning, Design and Construction/Facilities Planning Services (FPS) at ext. 2-2207 to clarify "special" finishes and applications.

02/16/2015, per Denise Hanley the following paint spec is used throughout CPB on walls: Corotech water based single phase epoxy, eggshell finish.

Room Type	Flooring	Base	Walls (see note about wall finish above)	Wall & Corner Guards	Doors	Door Frame	Ceiling	Millwork / Casework	Misc/Other	Window Treatment
Break Room Staff Locker Rm	VCT-24 Mannington "Essentials" #137 Sandrift 12"x12" Install ties in one direction <i>Historical</i> VCT-15 Mannington "Inspirations" #417 Cream Tones 12"x12"	RB-15 Roppe 4" Resilient Covered Base Color: #140-TS Fawn <i>Historical</i> RB-6 Johnsonite 4" covered Color: Fawn	PT-55 Benjamin Moore Brandy Cream OC-4 Finish: Satin	N/A	PL-38 Nevamar Tangier Anigre WA-0002E	PT-56 Benjamin Moore Pismo Dunes AC-32 SemiGloss	ACT-2 Armstrong "Cortega 770" 2'x2' White	PL-3 Formica Lacewood #744 (Vertical surfaces) PL-37 Wilsonart Burnished Spruce #4797-60		WS-4 MechoShade Thermoveil 1300 Series Dense "Basketweave" Eggshell # 1316
Conference Flr 8 Conf Cntr	CPT-34 Interface "Nature Trails" Custom Color #472273 04/2011 Changed Yarn System NEW #176614	RB-5 Roppe 4" covered Black # RP100	FWC-8 Knoll Textiles Tailor Made Color: Sage #W133/6 FWC-9 Knoll Textiles Tailor Made Color: Muslin #W133/2 <i>Corridors Outside Of Conf. Center Accent Walls</i> PT-63 Benjamin Moore Purple Haze #1413 (purple) PT-54 Benjamin Moore Grenada Villa #690		PL-38 Nevamar Tangier Anigre WA-0002E	PT-72 Benjamin Moore Jet black # 2120-10		PL-38 Nevamar Tangier Anigre WA-0002E		
Conference Rooms	CPT-104 Lees "By the Book" Ingenious 337 24" x 24" Must install quarter- turned <i>Historical</i> CPT-37 Lees "Heartland T" # D8442 (MDA# CL423) Capri # 307	RB-15 Roppe 4" Resilient Covered Base Color: #140-TS Fawn <i>Historical</i> RB-6 Johnsonite 4" covered Color: Fawn	PT-55 Benjamin Moore Brandy Cream OC-4 Finish: Satin	N/A	PL-38 Nevamar Tangier Anigre WA-0002E	PT-56 Benjamin Moore Pismo Dunes AC-32 SemiGloss	ACT-2 Armstrong "Cortega 770" 2'x2' White	PL-38 Nevamar Tangier Anigre WA-0002E		WS-4 MechoShade Thermoveil 1300 Series Dense "Basketweave" Eggshell # 1316
Corridors Public Areas Level 2	CPT-34 Interface "Nature Trails" Custom Color #472273 04/2011 Changed Yarn System NEW #176614									



FACILITIES
MANAGEMENT
OFFICE OF

FACILITIES PLANNING,
DESIGN AND
CONSTRUCTION

INTERIOR FINISH STANDARDS
FOR
1155 PRESSLER
CANCERPREVENTIONBUILDING
(CPB)

SHEET TITLE:

CPB
FINISH SCHEDULE
1/6

LAST UPDATE:

01/05/2016

SHEET NO.:

2 OF 25

FILE NAME: ODGECBCPBR3.indd

PRINT

BACK TO
T.O.C.

NEXT PAGE

Interior Finish Standards

Cancer Prevention Bldg (CPB)

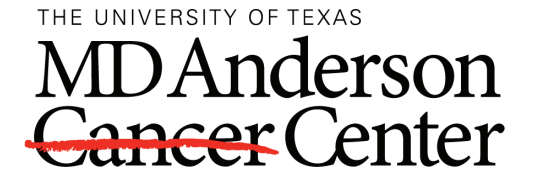
1155 Pressler

Updated : 03/02/2015 (LCT)

This schedule is intended to convey the general MDACC "standard" products used in the indicated room types to assist with the **Design Development phase only** of renovation or new construction projects.
 Finish legends and room finish schedules for construction documents **MUST** be reviewed and approved by the MDACC Planner/Designer assigned to the project.
 All Planner/Designers are responsible for verifying the information herein for accuracy.
 Contact Facilities Planning, Design and Construction/Facilities Planning Services (FPS) at ext. 2-2207 to clarify "special" finishes and applications.

02/16/2015, per Denise Hanley the following paint spec is used throughout CPB on walls: Corotech water based single phase epoxy, eggshell finish.

Room Type	Flooring	Base	Walls (see note about wall finish above)	Wall & Corner Guards	Doors	Door Frame	Ceiling	Millwork / Casework	Misc/Other	Window Treatment
Corridor Public	CPT-104 Lees "By the Book" Ingenious 337 24" x 24" Must install quarter-turned <u>Historical</u> CPT-37 Lees "Heartland T" # D8442 (MDA# CL423) Capri # 307	RB-15 Roppe 4" Resilient Covered Base Color: #140-TS Fawn <u>Historical</u> RB-6 Johnsonite 4" covered Color: Fawn	PT-55 Benjamin Moore Brandy Cream OC-4 Finish: Satin <u>Accent Walls</u> 3rd Floor: PT-59 Benjamin Moore Hemlock #719 4th & 7th Floors: PT-57 Benjamin Moore Dartmouth Green #691 5th Floor: PT-63 Benjamin Moore Purple Haze #1413 (purple) 6th Floor: PT-60 Benjamin Moore Bella Blue #720 8th Floor (8.3201): PT-54 Benjamin Moore Grenada Villa #690	N/A	PL-38 Nevamar Tangier Anigre WA-0002E	PT-56 Benjamin Moore Pismo Dunes AC-32 SemiGloss	ACT-2 Armstrong "Cortega 770" 2'x2' White			WS-4 MechoShade Thermoveil 1300 Series Dense "Basketweave" Eggshell # 1316
OutPatient Clinic Dressing Room	SHV-2 Armstrong Medintech Freesia Pearl #86485 #88485 WR-2 Armstrong Freesia Pearl #96485 #WM485	RB-15 Roppe 4" Resilient Covered Base Color: #140-TS Fawn <u>Historical</u> RB-6 Johnsonite 4" covered Color: Fawn	PT-55 Benjamin Moore Brandy Cream OC-4 Finish: Satin		PL-38 Nevamar Tangier Anigre WA-0002E			PL-38 Nevamar Tangier Anigre WA-0002E		
OutPatient Clinic Reception	CPT-100 Tandus Flooring Liana 04164 Color: Branch 13215 24" x 24" Must install monolithic <u>Historical</u> CPT-44 Interface "Route 66" Holbrook # 2493	RB-15 Roppe 4" Resilient Covered Base Color: #140-TS Fawn <u>Historical</u> RB-6 Johnsonite 4" covered Color: Fawn	VWC-22 Maharam "Honor Weave" 395510 Flax # 012 PT-55 Benjamin Moore Brandy Cream OC-4 Finish: Satin <u>Facia Walls</u> PT-57 Benjamin Moore Dartmouth Green #691 PT-60 Benjamin Moore Bella Blue #720 PT-63 Benjamin Moore Purple Haze #1413 (purple)		PL-38 Nevamar Tangier Anigre WA-0002E	PT-56 Benjamin Moore Pismo Dunes AC-32 SemiGloss	ACT-2 Armstrong "Cortega 770" 2'x2' White	PL-38 Nevamar Tangier Anigre WA-0002E SSM-9 Dupont "Corian" Evergreen SSM-10 Dupont "Corian" Abalone	N/A	N/A



FACILITIES
MANAGEMENT
OFFICE OF
FACILITIES PLANNING,
DESIGN AND
CONSTRUCTION
INTERIOR FINISH STANDARDS
FOR
1155 PRESSLER
CANCERPREVENTIONBUILDING
(CPB)

SHEET TITLE:
**CPB
FINISH SCHEDULE
2/6**
LAST UPDATE:
01/05/2016
SHEET NO.:
3 OF **25**
FILE NAME: ODGECBCPBR3.indd

Interior Finish Standards

Cancer Prevention Bldg (CPB)

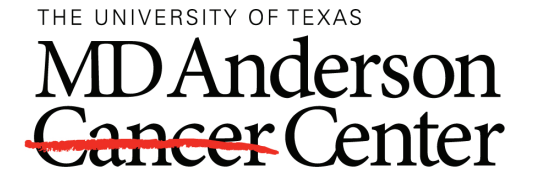
1155 Pressler

Updated : 03/02/2015 (LCT)

This schedule is intended to convey the general MDACC "standard" products used in the indicated room types to assist with the **Design Development phase only** of renovation or new construction projects. Finish legends and room finish schedules for construction documents **MUST** be reviewed and approved by the MDACC Planner/Designer assigned to the project. All Planner/Designers are responsible for verifying the information herein for accuracy. Contact Facilities Planning, Design and Construction/Facilities Planning Services (FPS) at ext. 2-2207 to clarify "special" finishes and applications.

02/16/2015, per Denise Hanley the following paint spec is used throughout CPB on walls: Corotech water based single phase epoxy, eggshell finish.

Room Type	Flooring	Base	Walls (see note about wall finish above)	Wall & Corner Guards	Doors	Door Frame	Ceiling	Millwork / Casework	Misc/Other	Window Treatment
OutPatient Clinic Sub-Waiting	CPT-98 Tandus Flooring Meristem 03310	RB-15 Roppe 4" Resilient Coved								
OutPatient Clinic Exam Room & Trtmt Room	SHV-2 Armstrong Medintech Freesia Pearl # 86485- #88485 WR-2 Armstrong Freesia Pearl # 96485- #WM485	RB-15 Roppe 4" Resilient Coved Base Color: #140-TS Fawn <i>Historical</i> RB-6 Johnsonite 4" coved Color: Fawn	PT-55 Benjamin Moore Brandy Cream OC-4 Finish: Satin <i>Accent Walls</i> PT-53 Benjamin Moore Rhine River #689 PT-58 Benjamin Moore Ocean City Blue #718 PT-61 Benjamin Moore North Cascades #1411	N/A	N/A	PT-56 Benjamin Moore Pismo Dunes AC-32 SemiGloss	ACT-2 Armstrong "Cortega 770" 2'x2' White	PL-38 Nevamar Tangier Anigre WA-0002E SSM-12 Dupont "Corian" Tumbled Glass SSM-8 Dupont "Corian" Bisque	N/A	N/A
OutPatient Clinic Clean/Dirty Linen	SHV-2 Armstrong Medintech Freesia Pearl # 86485- #88485 WR-2 Armstrong Freesia Pearl # 96485- #WM485	<i>Integral Base</i> SHV-2 Armstrong Medintech Freesia Pearl # 86485- #88485 WR-2 Armstrong Freesia Pearl # 96485- #WM485	PT-55 Benjamin Moore Brandy Cream OC-4 Finish: Satin		PL-38 Nevamar Tangier Anigre WA-0002E	PT-56 Benjamin Moore Pismo Dunes AC-32 SemiGloss	<i>Painted Gypboard</i> PT-55 Benjamin Moore Brandy Cream OC-4 Finish: Satin	N/A	N/A	N/A
OutPatient Clinic										
OutPatient Clinic										
OutPatient Clinic										



FACILITIES
MANAGEMENT
OFFICE OF

FACILITIES PLANNING,
DESIGN AND
CONSTRUCTION

INTERIOR FINISH STANDARDS
FOR
1155 PRESSLER
CANCERPREVENTIONBUILDING
(CPB)

SHEET TITLE:

**CPB
FINISH SCHEDULE
3/6**

LAST UPDATE:

01/05/2016

SHEET NO.:

4 OF **25**
FILE NAME: ODGECBCPBR3.indd

Interior Finish Standards

Cancer Prevention Bldg (CPB)

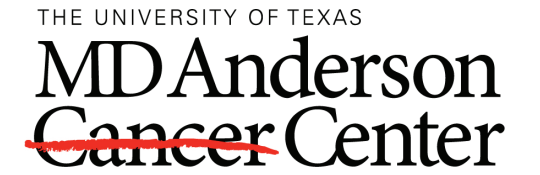
1155 Pressler

Updated : 03/02/2015 (LCT)

This schedule is intended to convey the general MDACC "standard" products used in the indicated room types to assist with the **Design Development phase only** of renovation or new construction projects.
 Finish legends and room finish schedules for construction documents **MUST** be reviewed and approved by the MDACC Planner/Designer assigned to the project.
 All Planner/Designers are responsible for verifying the information herein for accuracy.
 Contact Facilities Planning, Design and Construction/Facilities Planning Services (FPS) at ext. 2-2207 to clarify "special" finishes and applications.

02/16/2015, per Denise Hanley the following paint spec is used throughout CPB on walls: Corotech water based single phase epoxy, eggshell finish.

Room Type	Flooring	Base	Walls (see note about wall finish above)	Wall & Corner Guards	Doors	Door Frame	Ceiling	Millwork / Casework	Misc/Other	Window Treatment
Public Dining Cool Beans Cafe	CPT-45 Collins & Aikman Block Weave Color: #94804 Summer & Winter		<u>Food Services, Condiment Wall & Door Frames</u> PT-74 Benjamin Moore Dijon #193 Finish: Satin Door Frames: Semi-Gloss <u>Food Services & Condiment Wall</u> PT-75 Benjamin Moore Harvest Time #186 Finish: Satin <u>Dining Door Frame at Banquet Wall</u> PT-76 Benjamin Moore Pottery Red #2085-20 Finish: Semi-Gloss? <u>Food Services</u> PT-77 Benjamin Moore French Violet #1427 Finish: Satin							
General Office Areas	CPT-104 Lees "By the Book" Ingenious 337 24" x 24" Must install quarter-turned Historical CPT-37 Lees "Heartland T" # D8442 (MDA# CL423) Capri # 307	RB-15 Roppe 4" Resilient Covered Base Color: #140-TS Fawn Historical RB-6 Johnsonite 4" covered Color: Fawn	PT-55 Benjamin Moore Brandy Cream OC-4 Finish: Satin	N/A	PL-38 Nevamar Tangier Anigre WA-0002E	PT-56 Benjamin Moore Pismo Dunes AC-32 SemiGloss	ACT-2 Armstrong "Cortega 770" 2'x2' White			WS-4 MechoShade Thermoveil 1300 Series Dense "Basketweave" Eggshell # 1316
Elevator Cabs	CPT-34 Interface "Nature Trails" Custom Color #472273 04/2011 Changed Yarn System NEW #176614									
Elevator Lobby Floor 1										
Elevator Lobby Floor 2	CPT-34 Interface "Nature Trails" Custom Color #472273 04/2011 Changed Yarn System NEW #176614									



FACILITIES MANAGEMENT OFFICE OF FACILITIES PLANNING, DESIGN AND CONSTRUCTION

INTERIOR FINISH STANDARDS FOR 1155 PRESSLER CANCERPREVENTIONBUILDING (CPB)

SHEET TITLE:

CPB FINISH SCHEDULE 4/6

LAST UPDATE: 01/05/2016

SHEET NO.: 5 OF 25

FILE NAME: ODGECBCPBR3.indd

Interior Finish Standards

Cancer Prevention Bldg (CPB)

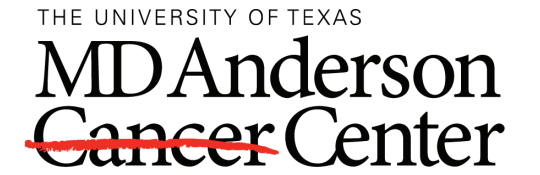
1155 Pressler

Updated : 03/02/2015 (LCT)

This schedule is intended to convey the general MDACC "standard" products used in the indicated room types to assist with the **Design Development phase only** of renovation or new construction projects.
 Finish legends and room finish schedules for construction documents **MUST** be reviewed and approved by the MDACC Planner/Designer assigned to the project.
 All Planner/Designers are responsible for verifying the information herein for accuracy.
 Contact Facilities Planning, Design and Construction/Facilities Planning Services (FPS) at ext. 2-2207 to clarify "special" finishes and applications.

02/16/2015, per Denise Hanley the following paint spec is used throughout CPB on walls: Corotech water based single phase epoxy, eggshell finish.

Room Type	Flooring	Base	Walls (see note about wall finish above)	Wall & Corner Guards	Doors	Door Frame	Ceiling	Millwork / Casework	Misc/Other	Window Treatment
Elevator Lobby Floors 3 - 7	CPT-104 Lees "By the Book" Ingenious 337 24" x 24" Must install quarter-turned <i>Historical</i> CPT-37 Lees "Heartland T" # D8442 (MDA# CL423) Capri # 307									
Elevator Lobby Floor 8	CPT-100 Tandus Flooring Liana 04164 Color: Branch 13215 24" x 24" Must install monolithic <i>Historical</i> CPT-34 Interface "Nature Trails" Custom Color #172273 04/2011 Changed Yarn System NEW #176614	RB-15 Roppe 4" Resilient Coved Base Color: #140-TS Fawn <i>Historical</i> RB-? Roppe 4" coved Black # RP100								
Bridge to ACB Levels 3-7	CPT-104 Lees "By the Book" Ingenious 337 24" x 24" Must install quarter-turned									
Storage Rm.		RB-15 Roppe 4" Resilient Coved Base Color: #140-TS Fawn <i>Historical</i> RB-6 Johnsonite 4" coved Color: Fawn	PT-55 Benjamin Moore Brandy Cream OC-4 Finish: Satin	N/A	PL-38 Nevamar Tangier Anigre WA-0002E	PT-56 Benjamin Moore Pismo Dunes AC-32 SemiGloss				
Public Toilets	TLF-18 Daltile "Diamante" 12" x 12" Sabbia # P024 matte TLS-?? C-Cure	TLW-11 Daltile "Diamante" Sabbia # P024 polished 12" x 12" Cut to 4" x 12"	TLW-11 Daltile "Diamante" 12" x 12" Sabbia # P024 polished TLW-15 Daltile "Diamante" 12" x 12" Ardesia # P027 polished 12" x 12" Sized as per Accent Tile TLW-16 Daltile "Diamante" 12" x 12" Verde # P031 polished 12" x 12" Sized as per Accent Tile	N/A	PL-38 Nevamar Tangier Anigre WA-0002E	PT-56 Benjamin Moore Pismo Dunes AC-32 SemiGloss	ACT-2 Armstrong "Cortega 770" 2'x2' White	<i>Toilet Partitions</i> PLTC-2 w/ PL-22 Nevamar Cognac Birdseye Velvet over phenolic resin core <i>Sink Counter</i> SSM-13 Dupont "Corian" Rainforest <i>Sink Bowl</i> SSM-8 Dupont "Corian" Bisque	N/A	N/A



FACILITIES
MANAGEMENT
OFFICE OF

FACILITIES PLANNING,
DESIGN AND
CONSTRUCTION

INTERIOR FINISH STANDARDS
FOR
1155 PRESSLER
CANCERPREVENTIONBUILDING
(CPB)

SHEET TITLE:

**CPB
FINISH SCHEDULE
5/6**

LAST UPDATE:

01/05/2016

SHEET NO.:

6 OF **25**
FILE NAME: ODGECBCPBR3.indd

Interior Finish Standards

Cancer Prevention Bldg (CPB)

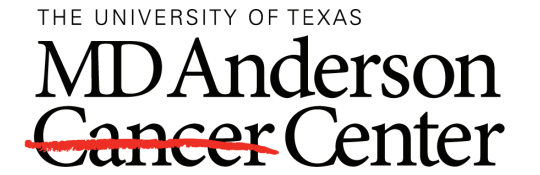
1155 Pressler

Updated : 03/02/2015 (LCT)

This schedule is intended to convey the general MDACC "standard" products used in the indicated room types to assist with the **Design Development phase only** of renovation or new construction projects. Finish legends and room finish schedules for construction documents **MUST** be reviewed and approved by the MDACC Planner/Designer assigned to the project. All Planner/Designers are responsible for verifying the information herein for accuracy. Contact Facilities Planning, Design and Construction/Facilities Planning Services (FPS) at ext. 2-2207 to clarify "special" finishes and applications.

02/16/2015, per Denise Hanley the following paint spec is used throughout CPB on walls: Corotech water based single phase epoxy, eggshell finish.

Room Type	Flooring	Base	Walls (see note about wall finish above)	Wall & Corner Guards	Doors	Door Frame	Ceiling	Millwork / Casework	Misc/Other	Window Treatment
Waiting Rooms Flr 2	CPT-100 Tandus Flooring Liana 04164 Color: Branch 13215 24" x 24" Must install monolithic <u>Historical</u> CPT-34 Interface "Nature Trails" Custom Color #172273 04/2011 Changed Yarn System NEW #176614	RB-15 Roppe 4" Resilient Coved Base Color: #140-TS Fawn <u>Historical</u> RB-6 Johnsonite 4" coved Color: Fawn								



FACILITIES
MANAGEMENT
OFFICE OF

FACILITIES PLANNING,
DESIGN AND
CONSTRUCTION

INTERIOR FINISH STANDARDS
FOR
1155 PRESSLER
CANCERPREVENTIONBUILDING
(CPB)

SHEET TITLE:

CPB
FINISH SCHEDULE
6/6

LAST UPDATE:

01/05/2016

SHEET NO.:

7 OF 25

FILE NAME: ODGECBCPBR3.indd

PRINT

BACK TO
T.O.C.

NEXT PAGE

FINISH LEGEND

CEILING

ACT-2 Armstrong
 No.: 770, Cortega
 Color: White
 Finish: Medium Texture
 Size: 2'x2'x5/8"

DOORS/ FRAMES

PL-38 Nevamar
 No.: WA-0002E, Tangier Anigre

PT-56 Benjamin Moore
 Color: AC-32, Pismo Dunes
 Finish: Semi-Gross

WALLS

PT-55 Benjamin Moore (Field)
 Color: OC-4, Brandy Cream
 Finish: Satin

FLOORS/ BASE

VCT-15 Mannington Commercial, 12"x12"
 Style: Inspirations
 Color: 417, Cream Tones

RB-6 Johnsonite, 4" Coved
 Color: 80, Fawn

ARCHITECTURAL WOODWORK

PL-3 Formica (Vertical Surfaces)
 No.: 744, Lacewood

PL-37 Wilsonart (Horizontal Surfaces)
 No.: 4797-60, Burnished Spruce

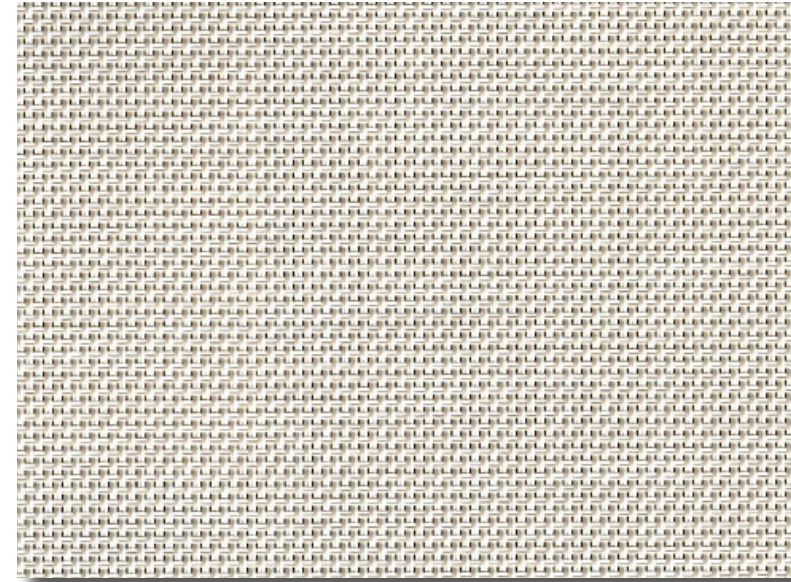
WINDOW TREATMENTS

WC-11 Mechoshade, Thermovail
 1300 Series, Dense Basketweave
 Color: 1316, Eggshell

Important Disclaimer: Colors presented in this file are provided for general color information only. Due to many different monitor settings on individual computers and different light sources - these finishes may appear from actual color. Actual samples are available from the FPDC/FPS library located on the 8th floor of FHB or may be ordered directly from manufacturers.



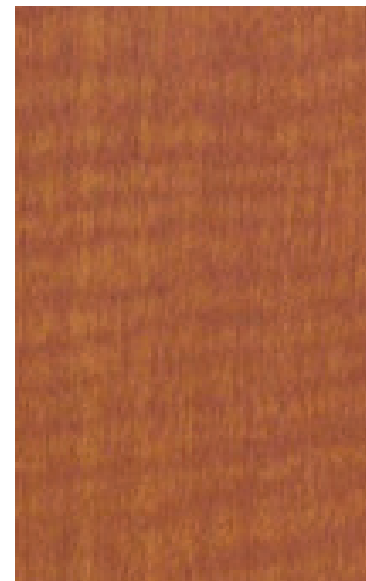
ACT-2



WC-11



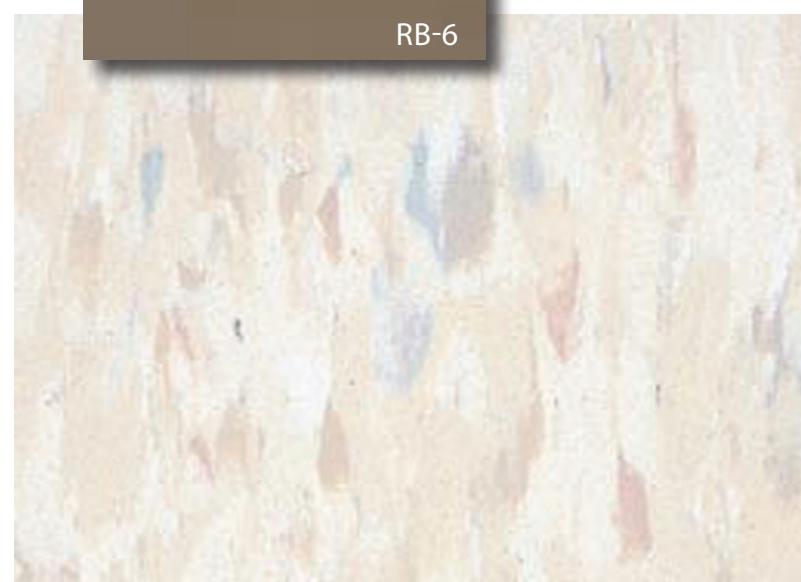
PT-55



PL-38



PT-56



RB-6

VCT-15



PL-37



PL-3

SHEET TITLE:

CPB
 BREAK ROOMS &
 STAFF LOCKER ROOMS

LAST UPDATE:

01/05/2016

SHEET NO.:

8 OF 25

FILE NAME: ODGECBCPBR3.indd

PRINT

BACK TO
 T.O.C.

NEXT PAGE

FINISH LEGEND

CEILING

ACT-2 Armstrong
 No.: 770, Cortega
 Color: White
 Size: 2'x2'x5/8"

DOORS/FRAMES

PL-38 Nevamar
 No.: WA-0002E, Tangier Anigre
 PT-72 Benjamin Moore
 Color: 2120-10, Jet Black

WALLS

FWC-8 Knoll Textiles
 Pattern: W133, Tailer Made
 Color: No. 6, Sage
 FWC-8 Knoll Textiles
 Pattern: W133, Tailer Made
 Color: No. 2, Muslin

FLOORS/BASE

CPT-43 Interface
 Pattern: Nature Trails
 Custom Color: 172273 (Custom)
 RB-5 Roppe, 4" Cove
 Color: RP100, Black

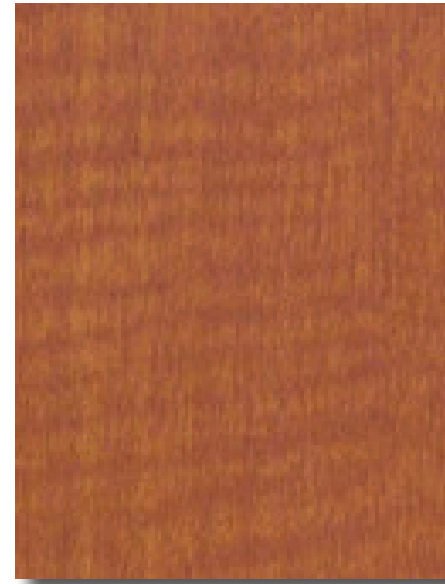
ARCHITECTURAL WOODWORK

PL-38 Nevamar
 No.: WA0002E, Tangier Anigre

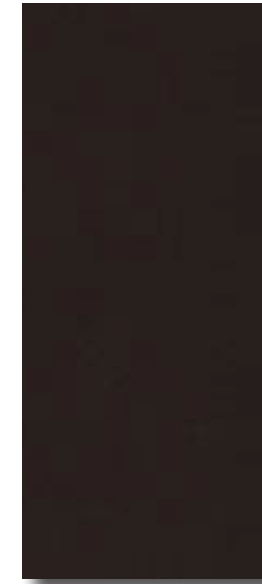
Important Disclaimer: Colors presented in this file are provided for general color information only. Due to many different monitor settings on individual computers and different light sources - these finishes may appear from actual color. Actual samples are available from the FPDC/FPS library located on the 8th floor of FHB or may be ordered directly from manufacturers.



ACT-2



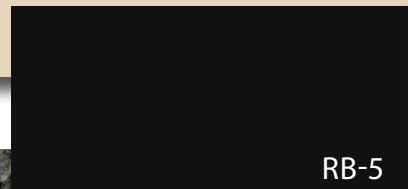
PL-38



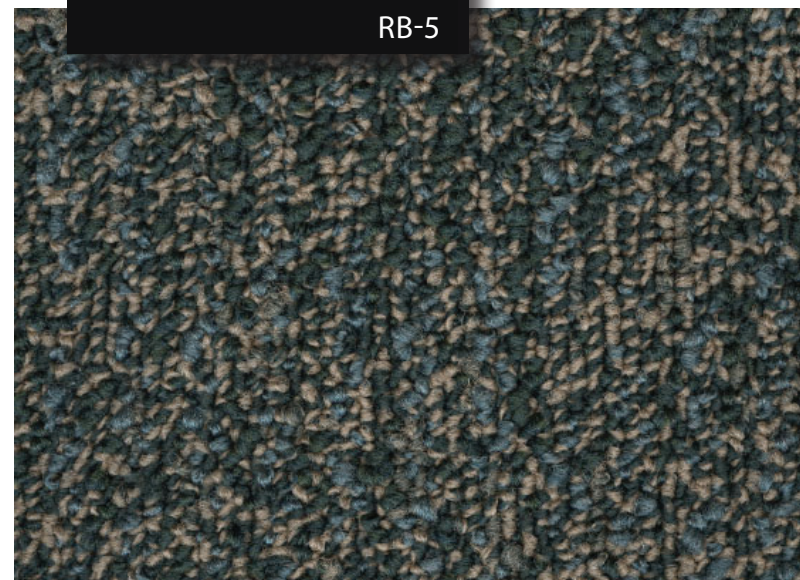
PT-72



PT-55



RB-5



CPT-34



FWC-9



FWC-8

SHEET TITLE:

CPB
 CONFERENCE
 Floor 8 Conference Center

LAST UPDATE:

01/05/2016

SHEET NO.:

9 OF 25

FILE NAME: ODGECBCPBR3.indd

PRINT

BACK TO
 T.O.C.

NEXT PAGE

FINISH LEGEND

CEILING

ACT-2 Armstrong
 No.: 770, Cortega
 Color: White
 Size: 2'x2'x5/8"

DOORS/FRAMES

PL-38 Nevamar
 No.: WA0002E, Tangier Anigre
 PT-56 Benjamin Moore
 Color: AC-32, Pismo Dunes
 Finish: Semi-Gloss

WALLS

PT-55 Benjamin Moore
 Color: OC-4, Brandy Cream
 Finish: Satin

FLOORS/BASE

CPT-37 Lees
 Pattern: D8442, Heartland
 Color: 307, Capri
 Size: 18"x18"
 RB-6 Johnsonite, 4" Cove
 Color: 80, Fawn

ARCHITECTURAL WOODWORK

PL-38 Nevamar
 No.: WA-0002E, Tangier Anigre

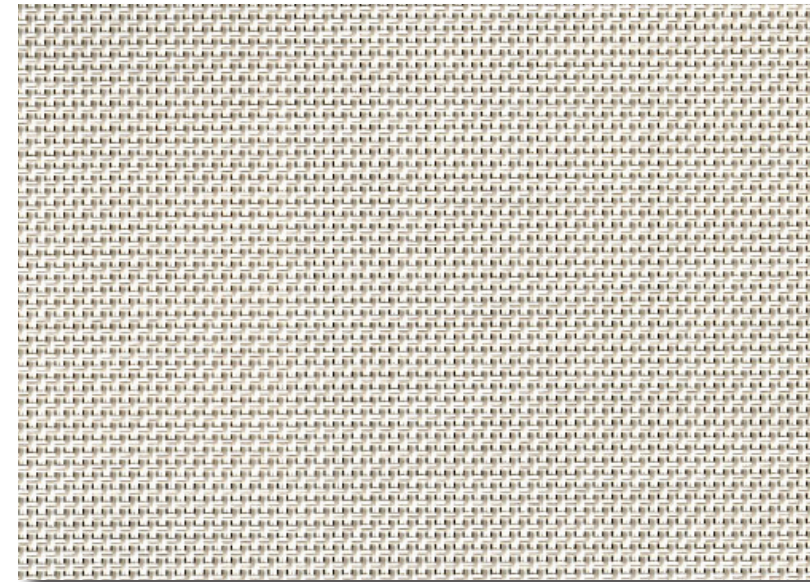
WINDOW TREATMENTS

WC-11 MecoShade, Thermoveil
 Pattern: 1300 Series, Dense Basketweave
 Color: 1316, Eggshell

Important Disclaimer: Colors presented in this file are provided for general color information only. Due to many different monitor settings on individual computers and different light sources - these finishes may appear from actual color. Actual samples are available from the FPDC/FPS library located on the 8th floor of FHB or may be ordered directly from manufacturers.



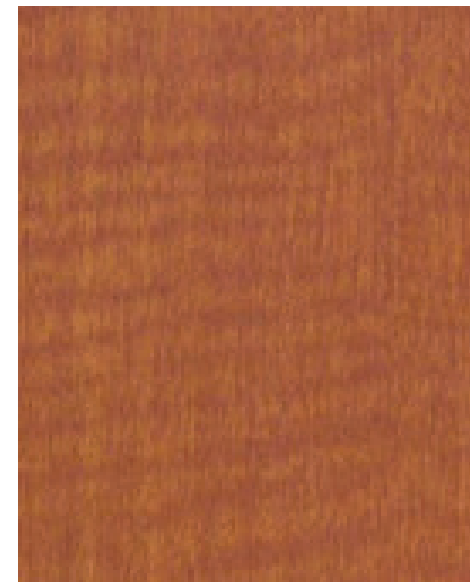
ACT-2



WC-11



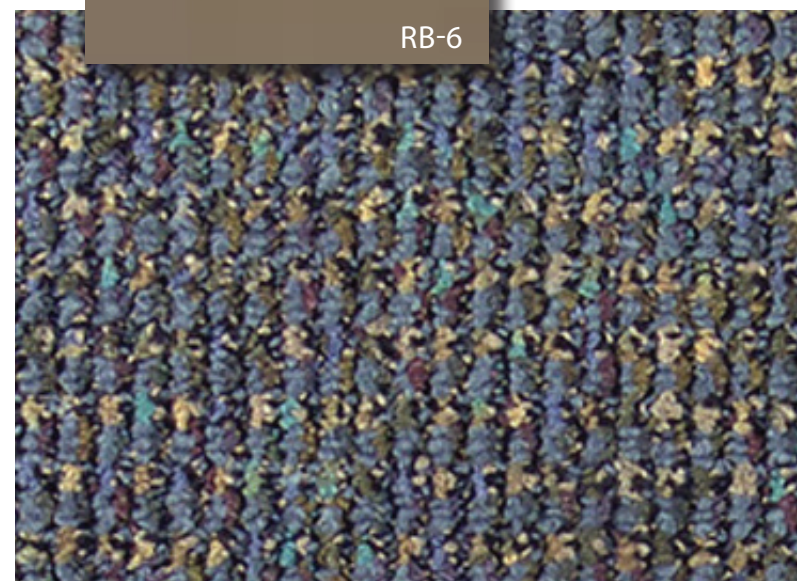
PT-55



PL-38



PT-56



RB-6

CPT-37

SHEET TITLE:

CPB
 CONFERENCE ROOMS

LAST UPDATE:

01/05/2016

SHEET NO.:

10 OF 25

FILE NAME: ODGECBCPBR3.indd

PRINT

BACK TO
 T.O.C.

NEXT PAGE

FINISH LEGEND

CEILING

ACT-2 Armstrong
 No.: 770, Cortega
 Color: White
 Size: 2'x2'x5/8"

DOORS/FRAMES

PL-38 Nevamar
 No.: WA-0002E, Tangier Anigre
 PT-56 Benjamin Moore
 Color: AC-32, Pismo Dunes
 Finish: Semi-Gloss

WALLS

PT-55 Benjamin Moore
 Color: OC-4, Brandy Cream
 Finish: Satin

FLOORS/BASE

CPT-37 Lees "Heartland", 18"x18" Tile
 No.: D8442
 Color: 307, Capri
 RB-6 Johnsonite, 4"
 Color: 80, Fawn

ARCHITECTURAL WOODWORK

PL-38 Nevamar
 No.: WA-0002E, Tangier Anigre

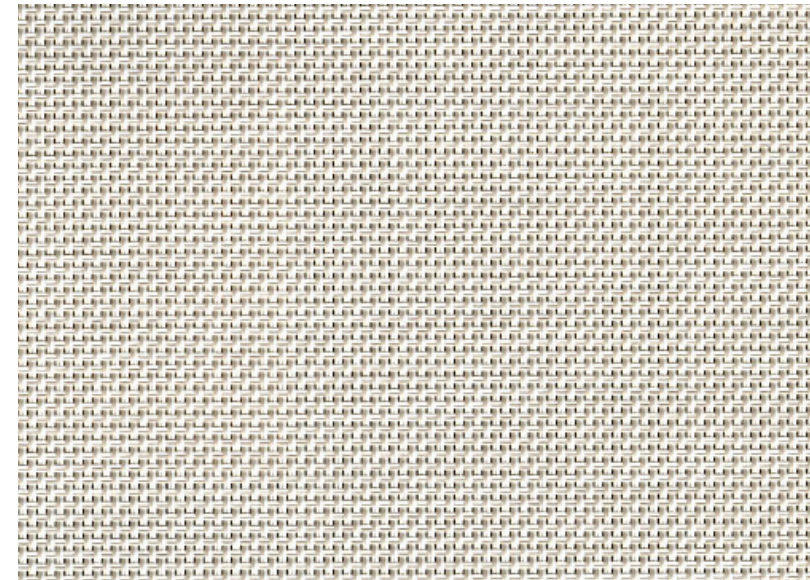
WINDOW TREATMENTS

WC-11 MecoShade, Thermoveil
 Pattern: 1300 Series, Dense Basketweave
 Color: 1316, Eggshell

Important Disclaimer: Colors presented in this file are provided for general color information only. Due to many different monitor settings on individual computers and different light sources - these finishes may appear from actual color. Actual samples are available from the FPDC/FPS library located on the 8th floor of FHB or may be ordered directly from manufacturers.



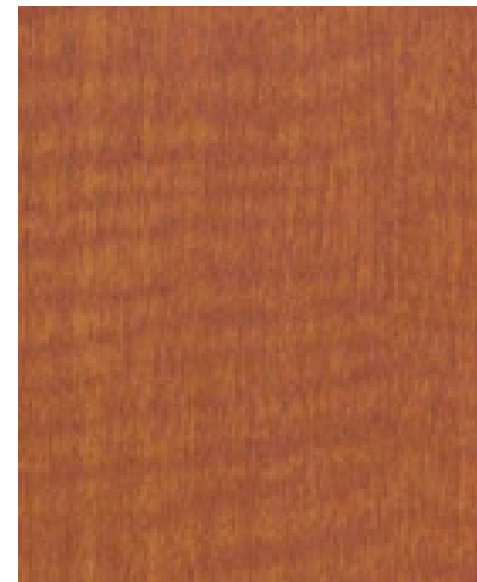
ACT-2



WC-11



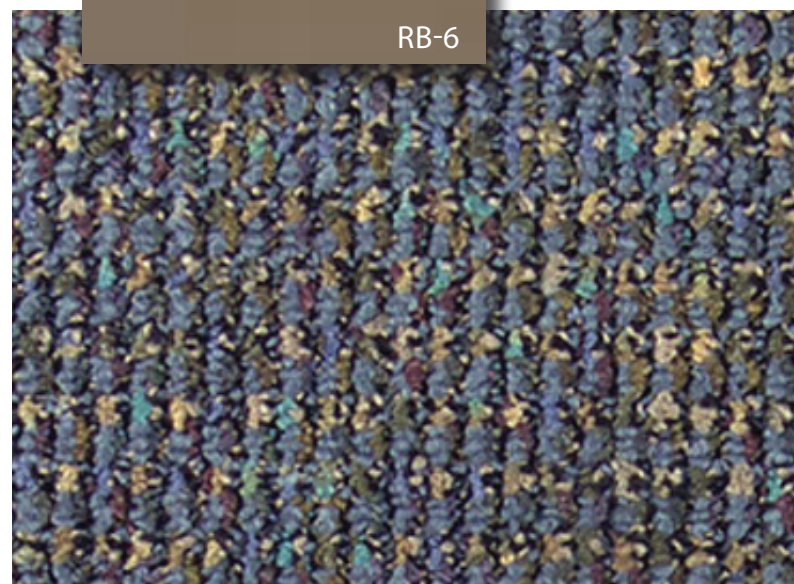
PT-55



PL-38



PT-56



RB-6

CPT-37

SHEET TITLE:

CPB
 PUBLIC CORRIDORS

LAST UPDATE:

01/05/2016

SHEET NO.:

11 OF 25

FILE NAME: ODGECBCPBR3.indd

PRINT

BACK TO
 T.O.C.

NEXT PAGE

FINISH LEGEND

WALLS

PT-55 Benjamin Moore (Field)
Color: OC-4, Brandy Cream
Finish: Satin

FLOORS/BASE

SHV-2 Armstrong
Pattern: Medintech
Custom Color: 86485, Freesia Peal

WR-2 Armstrong (Welding Rod)
Pattern: Medintech
Color: 96485, Freesia Peal

RB-6 Johnsonite, 4" Cove
Color: 80, Fawn

ARCHITECTURAL WOODWORK

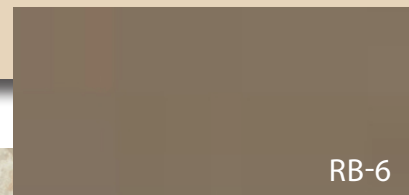
PL-38 Nevamar
No.: WA-0002E, Tangier Anigre



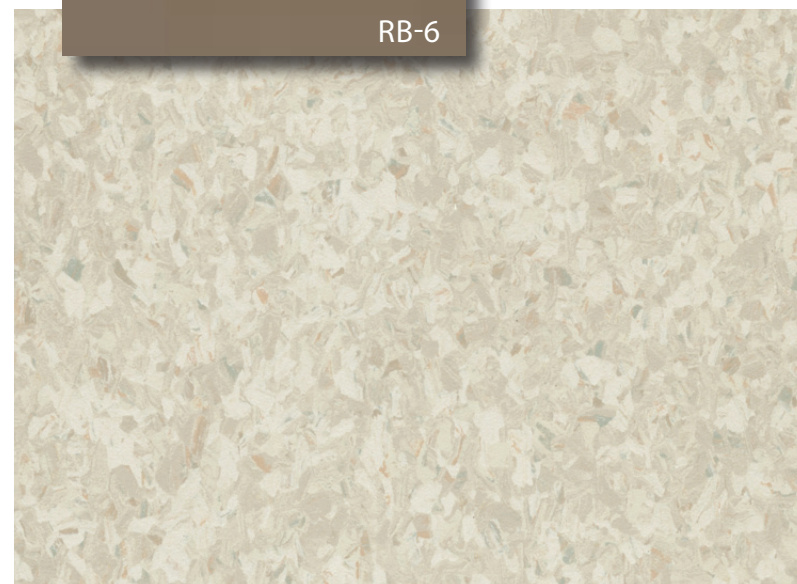
PL-38



PT-55



RB-6



SHV-2 / WR-2

Important Disclaimer: Colors presented in this file are provided for general color information only. Due to many different monitor settings on individual computers and different light sources - these finishes may appear from actual color. Actual samples are available from the FPDC/FPS library located on the 8th floor of FHB or may be ordered directly from manufacturers.

THE UNIVERSITY OF TEXAS

MDAnderson
Cancer Center

FACILITIES
MANAGEMENT
OFFICE OF

FACILITIES PLANNING,
DESIGN AND
CONSTRUCTION

INTERIOR FINISH STANDARDS
FOR
1155 PRESSLER
CANCERPREVENTIONBUILDING
(CPB)

SHEET TITLE:

CPB
OUTPATIENT CLINIC
DRESSING ROOM

LAST UPDATE:

01/05/2016

SHEET NO.:

12 OF 25

FILE NAME: ODGECBCPBR3.indd

PRINT

BACK TO
T.O.C.

NEXT PAGE

FINISH LEGEND

CEILING

ACT-2 Armstrong
 No.: 770, Cortega
 Color: White
 Finish: Medium Texture
 Size: 2'x2'x5/8"

DOORS/ FRAMES

PL-38 Nevamar
 No.: WA-0002E, Tangier Anigre

PT-56 Benjamin Moore
 Color: AC-32, Pismo Dunes
 Finish: Semi-Gross

WALLS

VWC-22 Maharam
 Pattern: 395510, Honor Weave
 Color: No. 012, Flax

PT-55 Benjamin Moore
 Color: OC-4, Brandy Cream
 Finish: Satin

PT-57 Benjamin Moore (Facia Walls)
 Color: BM-691, Dartmouth Green

PT-60 Benjamin Moore (Facia Walls)
 Color: BM-720, Bella Blue

PT-63 Benjamin Moore (Facia Walls)
 Color: BM-1413, Purple Haze

FLOORS/ BASE

CPT-44 Interface
 Pattern: Route 66
 Color: 2493, Holbrook

RB-6 Johnsonite, 4"
 Color: 80, Fawn

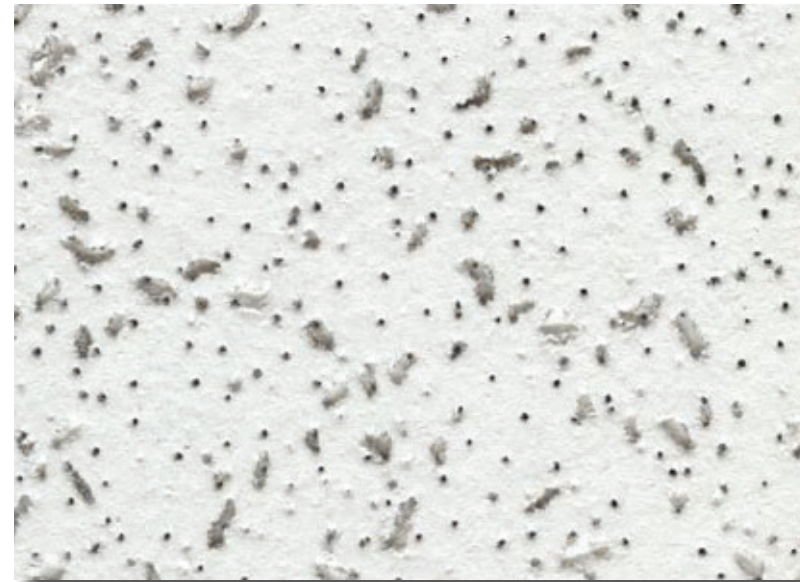
ARCHITECTURAL WOODWORK

PL-38 Nevamar
 No.: WA-0002E, Tangier Anigre

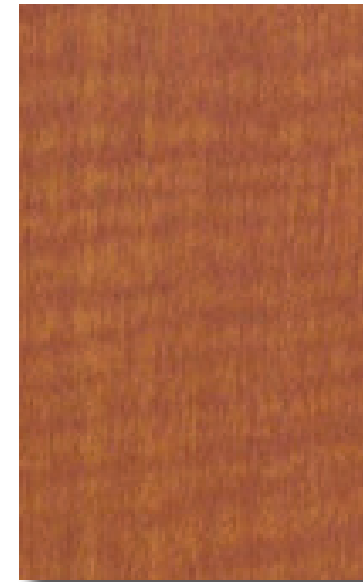
SSM-9 Dupont "Corian"
 Color: Evergreen

SSM-10 Dupont "Corian"
 Color: Abalone

Important Disclaimer: Colors presented in this file are provided for general color information only. Due to many different monitor settings on individual computers and different light sources - these finishes may appear from actual color. Actual samples are available from the FPDC/FPS library located on the 8th floor of FHB or may be ordered directly from manufacturers.



ACT-2



PL-38



PT-56



PT-57



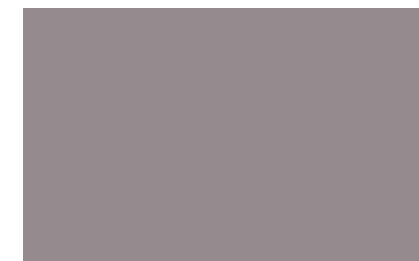
PT-55



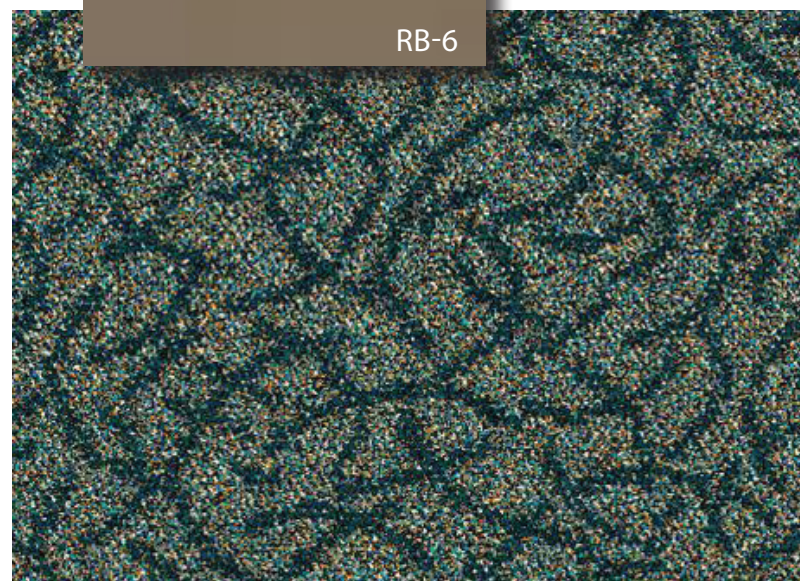
VWC-22



PT-60



PT-63



RB-6



SSM-9



SSM-10

FACILITIES MANAGEMENT OFFICE OF

FACILITIES PLANNING,
 DESIGN AND
 CONSTRUCTION

INTERIOR FINISH STANDARDS
 FOR
 1155 PRESSLER
 CANCERPREVENTIONBUILDING
 (CPB)

SHEET TITLE:

CPB OUTPATIENT CLINIC RECEPTION

LAST UPDATE:

01/05/2016

SHEET NO.:

13 OF 25

FILE NAME: ODGECBCPBR3.indd

PRINT

BACK TO
 T.O.C.

NEXT PAGE

CPT-44

FINISH LEGEND

CEILING

ACT-2 Armstrong
 No.: 770, Cortega
 Color: White
 Finish: Medium Texture
 Size: 2'x2'x5/8"

DOORS/ FRAMES

PL-38 Nevamar
 No.: WA-0002E, Tangier Anigre

PT-56 Benjamin Moore
 Color: AC-32, Pismo Dunes
 Finish: Semi-Gloss

WALLS

VWC-22 Maharam
 Pattern: 395510, Honor Weave
 Color: No. 012, Flax

PT-55 Benjamin Moore
 Color: OC-4, Brandy Cream
 Finish: Satin

PT-57 Benjamin Moore (Facia Walls)
 Color: BM-691, Dartmouth Green

PT-60 Benjamin Moore (Facia Walls)
 Color: PT-60, Bella Blue

PT-63 Benjamin Moore (Facia Walls)
 Color: 1413, Purple Haze

FLOORS/ BASE

CPT-44 Interface
 Pattern: Route 66
 Color: 2493, Holbrook

RB-6 Johnsonite, 4"
 Color: 80, Fawn

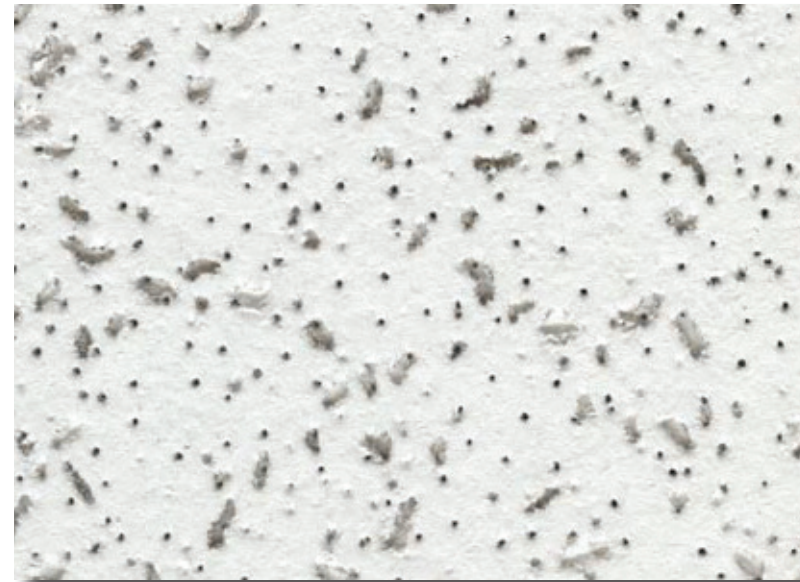
ARCHITECTURAL WOODWORK

PL-38 Nevamar
 No.: WA-0002E, Tangier Anigre

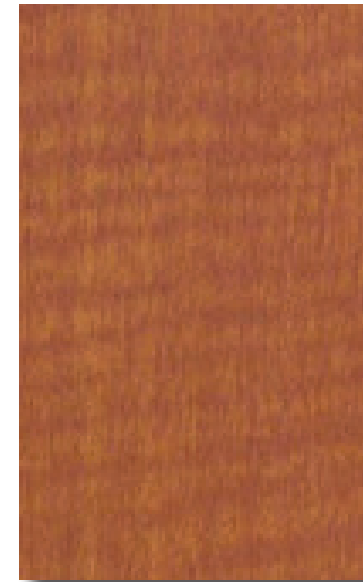
SSM-9 Dupont "Corian"
 Color: Evergreen

SSM-10 Dupont "Corian"
 Color: Abalone

Important Disclaimer: Colors presented in this file are provided for general color information only. Due to many different monitor settings on individual computers and different light sources - these finishes may appear from actual color. Actual samples are available from the FPDC/FPS library located on the 8th floor of FHB or may be ordered directly from manufacturers.



ACT-2



PL-38



PT-56



PT-57



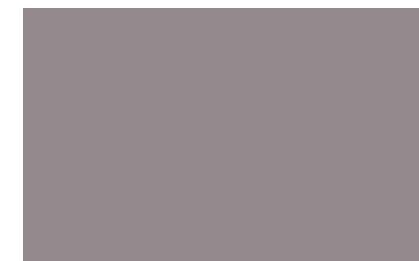
PT-55



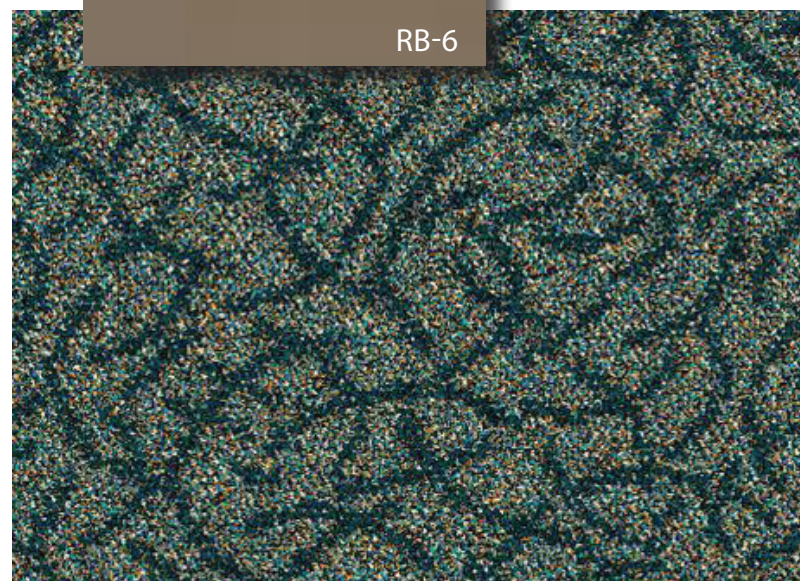
VWC-22



PT-60



PT-63



RB-6



SSM-9



SSM-10

FACILITIES MANAGEMENT OFFICE OF

FACILITIES PLANNING,
 DESIGN AND
 CONSTRUCTION

INTERIOR FINISH STANDARDS
 FOR
 1155 PRESSLER
 CANCERPREVENTIONBUILDING
 (CPB)

SHEET TITLE:

CPB
 SUB-WAITING
 (OUTPATIENT CLINIC)

LAST UPDATE:

01/05/2016

SHEET NO.:

14 OF 25

FILE NAME: ODGECBCPBR3.indd

PRINT

BACK TO
 T.O.C.

NEXT PAGE

CPT-44

FINISH LEGEND

CEILING

ACT-2 Armstrong
 No.: 770, Cortega
 Color: White
 Finish: Medium Texture
 Size: 2'x2'x5/8"

DOORS/FRAMES

PL-38 Nevamar
 No.: WA-0002E, Tangier Anigre
 PT-56 Benjamin Moore
 Color: AC-32, Prismo Dunes
 Finish: Semi-Gloss

WALLS

PT-55 Benjamin Moore (Field)
 Color: OC-4, Brandy Cream
 Finish: Satin
 PT-53 Benjamin Moore (Accent)
 Color: BM-689, Rhine River
 PT58 Benjamin Moore (Accent)
 Color: BM-718, Ocean City Blue
 PT-61 Benjamin Moore (Accent)
 Color: BM-1411, North Cascades

FLOORS/BASE

SHV-2 Armstrong
 Pattern: Medintech
 Color: 86485, Freesia Peal
 WR-2 Armstrong (Welding Rod)
 Pattern: Medintech
 Color: 96485, Freesia Peal
 RB-6 Johnsonite, 4"
 Color: 80, Fawn

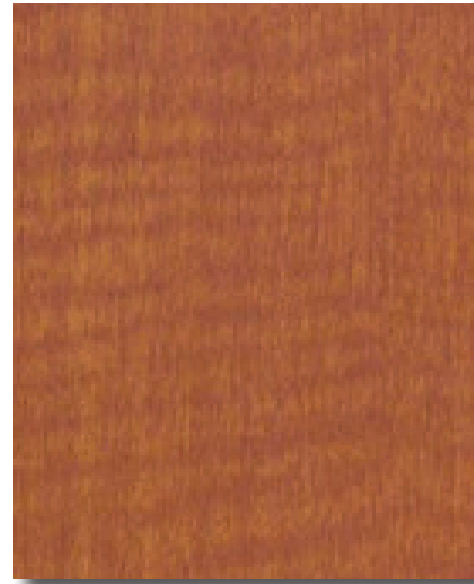
ARCHITECTURAL WOODWORK

PL-38 Nevamar
 No.: WA-0002E, Tangier Anigre
 SSM-8 Dupont, "Corian"
 Color: Bisque
 SSM-12 Dupont, "Corian"
 Color: Tumbled Glass

Important Disclaimer: Colors presented in this file are provided for general color information only. Due to many different monitor settings on individual computers and different light sources - these finishes may appear from actual color. Actual samples are available from the FPDC/FPS library located on the 8th floor of FHB or may be ordered directly from manufacturers.



ACT-2



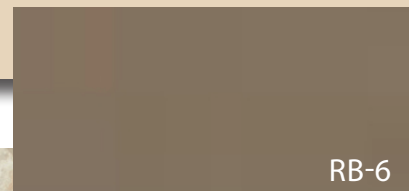
PL-38



PT-56



PT-55



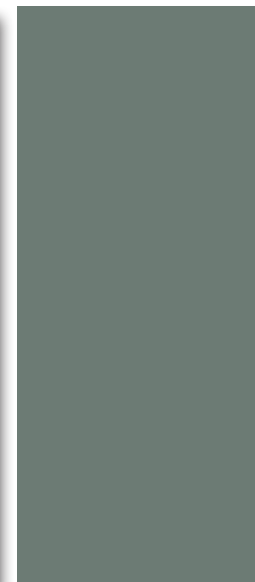
RB-6



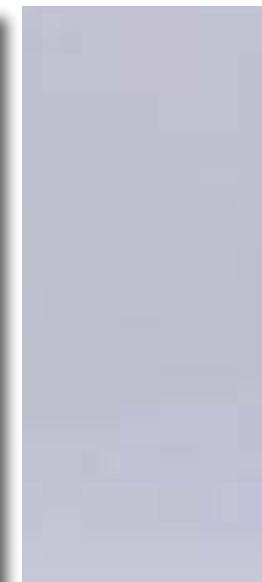
SHV-2 / WR-2



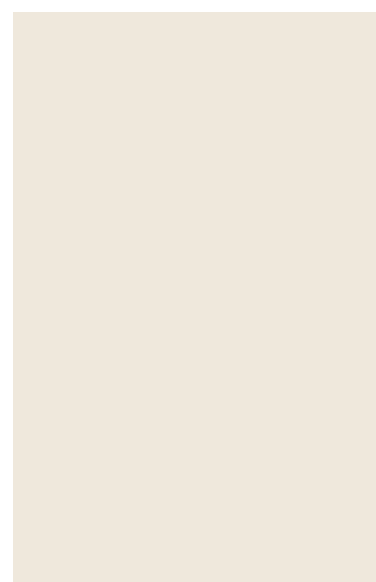
PT-53



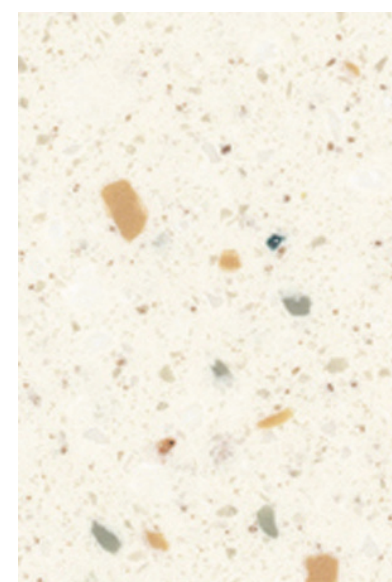
PT-58



PT-61



SSM-8



SSM-12

SHEET TITLE:

CPB
 OUTPATIENT CLINIC
 EXAM ROOM &
 TREATMENT ROOM

LAST UPDATE:

01/05/2016

SHEET NO.:

15 OF 25

FILE NAME: ODGECBCPBR3.indd

PRINT

BACK TO
 T.O.C.

NEXT PAGE

FINISH LEGEND

CEILING

PT-55 Benjamin Moore (Painted Gypboard)
Color: OC-4, Brandy Cream
Finish: Satin

DOORS/FRAMES

PL-38 Nevamar
No.: WA-0002E, Tangier Anigre
PT-56 Benjamin Moore
Color: AC-32, Prismo Dunes
Finish: Semi-Gloss

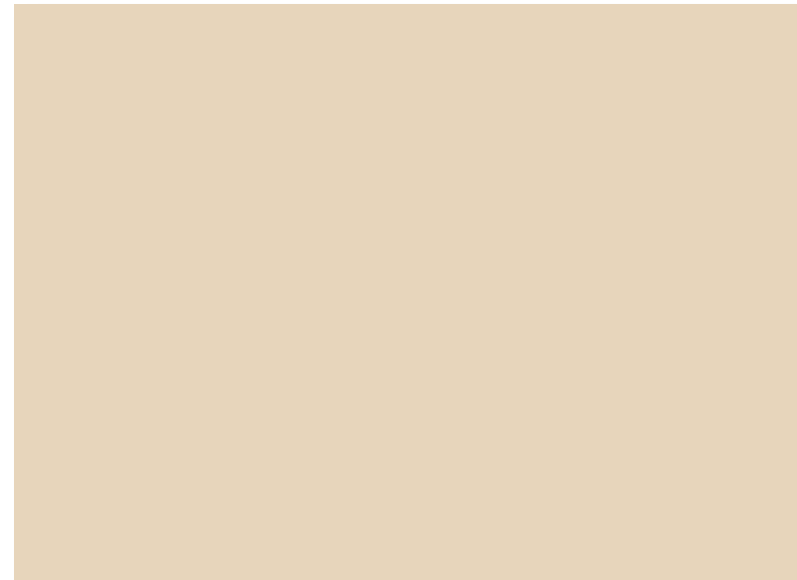
WALLS

PT-55 Benjamin Moore (Field)
Color: OC-4, Brandy Cream
Finish: Satin

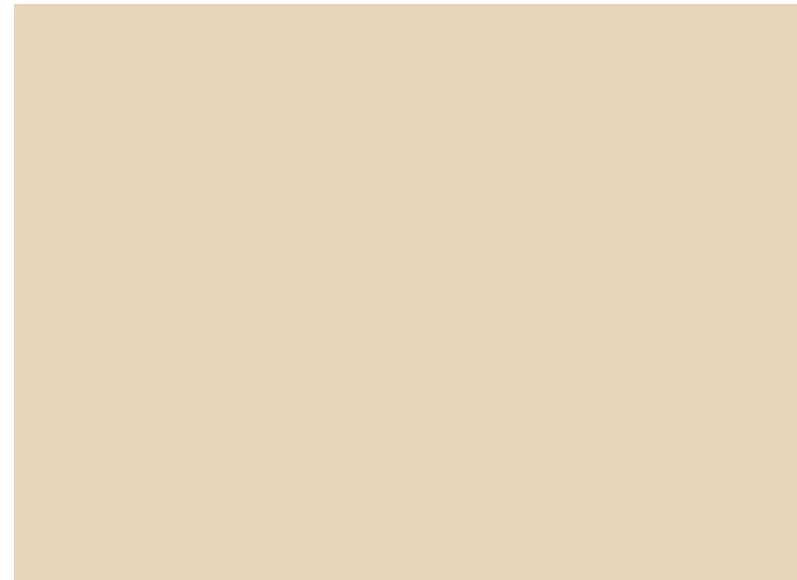
FLOORS/BASE

SHV-2 Armstrong (Floor & Base)
Pattern: Medintech
Color: 86485, Freesia Peal
WR-2 Armstrong (Welding Rod for Floor & Base)
Pattern: Medintech
Color: 96485, Freesia Peal

Important Disclaimer: Colors presented in this file are provided for general color information only. Due to many different monitor settings on individual computers and different light sources - these finishes may appear from actual color. Actual samples are available from the FPDC/FPS library located on the 8th floor of FHB or may be ordered directly from manufacturers.



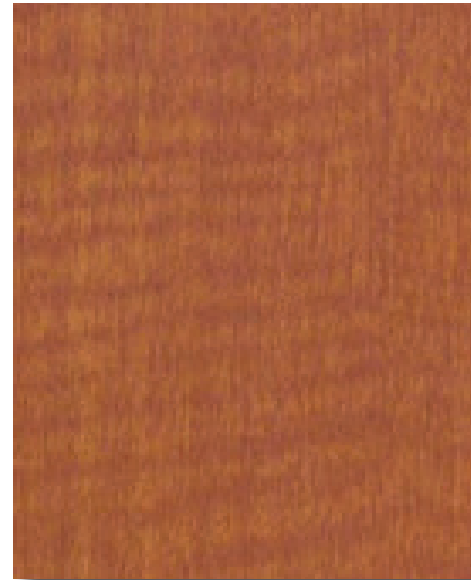
PT-55



PT-55



SHV-2 / WR-2



PL-38



PT-56

THE UNIVERSITY OF TEXAS

MD Anderson
Cancer Center

FACILITIES
MANAGEMENT
OFFICE OF

FACILITIES PLANNING,
DESIGN AND
CONSTRUCTION

INTERIOR FINISH STANDARDS
FOR
1155 PRESSLER
CANCERPREVENTIONBUILDING
(CPB)

SHEET TITLE:

CPB
OUTPATIENT CLINIC
CLEAN/DIRTY LINEN

LAST UPDATE:

01/05/2016

SHEET NO.:

16 OF 25

FILE NAME: ODGECBCPBR3.indd

PRINT

BACK TO
T.O.C.

NEXT PAGE

FINISH LEGEND

FLOORS/BASE

- CPT-34 Collins & Aikman
Pattern: Block Weave
Color: 94804, Summer & Winter
- RB-5 Roppe, 4" Coved
Color: RP-100, Black



CPT-45

Important Disclaimer: Colors presented in this file are provided for general color information only. Due to many different monitor settings on individual computers and different light sources - these finishes may appear from actual color. Actual samples are available from the FPDC/FPS library located on the 8th floor of FHB or may be ordered directly from manufacturers.

THE UNIVERSITY OF TEXAS

MD Anderson
~~Cancer Center~~

FACILITIES
MANAGEMENT
OFFICE OF

FACILITIES PLANNING,
DESIGN AND
CONSTRUCTION

INTERIOR FINISH STANDARDS
FOR
1155 PRESSLER
CANCERPREVENTIONBUILDING
(CPB)

SHEET TITLE:

CPB
Public Dining
Cool Beans Cafe

LAST UPDATE:

01/05/2016

SHEET NO.:

17 OF 25

FILE NAME: ODGECBCPBR3.indd

PRINT

BACK TO
T.O.C.

NEXT PAGE

FINISH LEGEND

CEILING

ACT-2 Armstrong
 No.: 770, Cortega
 Color: White
 Finish: Medium Texture
 Size: 2'x2'x5/8"

DOORS/ FRAMES

PL-38 Nevamar
 No.: WA-0002E, Tangier Anigre

PT-56 Benjamin Moore
 Color: AC-32, Pismo Dunes
 Finish: Semi-Gloss

WALLS

VWC-22 Maharam
 Pattern: 395510, Honor Weave
 Color: 012, Flax

PT-55 Benjamin Moore
 Color: OC-4, Brandy Cream
 Finish: Satin

FLOORS/ BASE

CPT-37 Lees "Heartland", 18"x18" Tile
 No.: D8442
 Color: 307, Capri

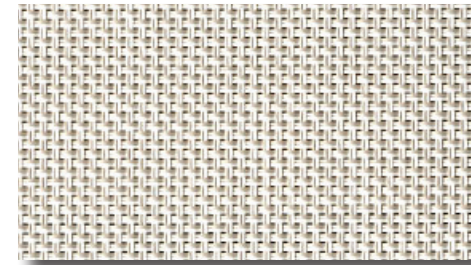
RB-6 Johnsonite, 4"
 Color: 80, Fawn

ARCHITECTURAL WOODWORK

PL-38 Nevamar
 No.: WA-0002E, Tangier Anigre



ACT-2



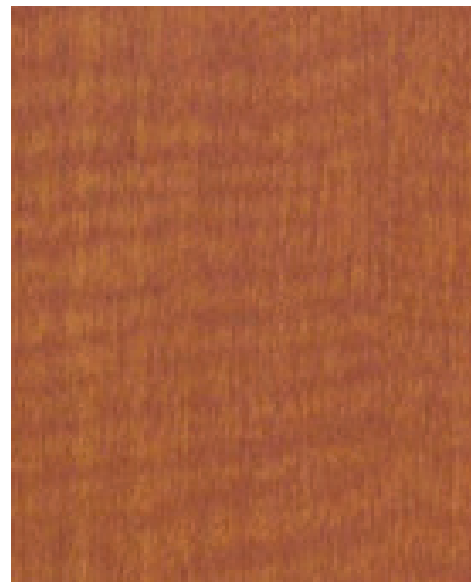
WC-11



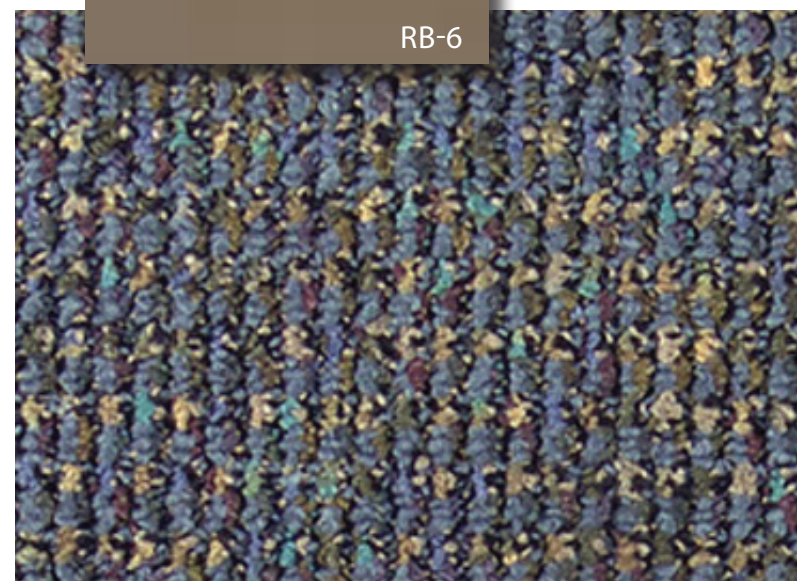
PT-56



PT-55



PL-38



RB-6

CPT-37

Important Disclaimer: Colors presented in this file are provided for general color information only. Due to many different monitor settings on individual computers and different light sources - these finishes may appear from actual color. Actual samples are available from the FPDC/FPS library located on the 8th floor of FHB or may be ordered directly from manufacturers.

SHEET TITLE:

CPB
 GENERAL OFFICE AREAS

LAST UPDATE:

01/05/2016

SHEET NO.:

18 OF 25

FILE NAME: ODGECBCPBR3.indd

PRINT

BACK TO
 T.O.C.

NEXT PAGE

FINISH LEGEND

FLOORS/BASE

CPT-43 Interface

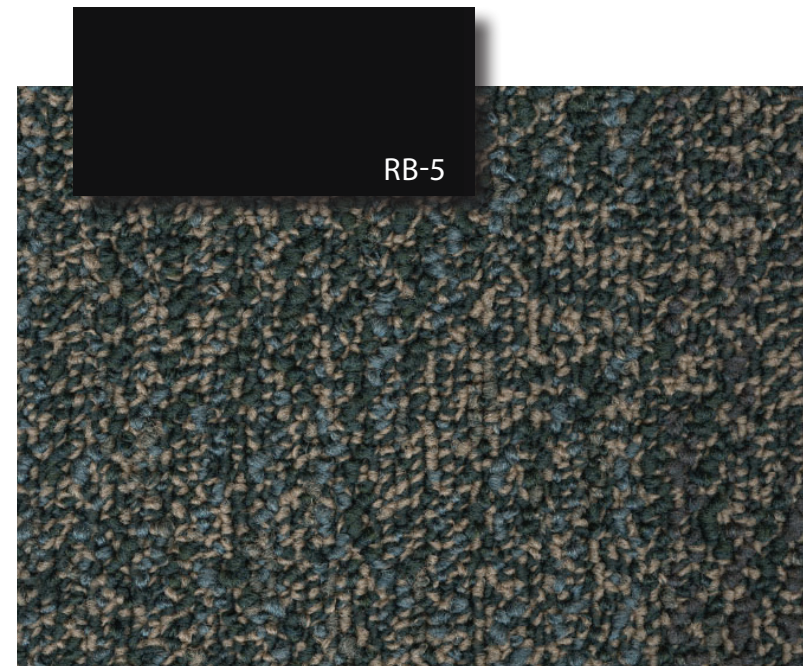
Pattern: Nature Trails

Color: "Heartland", 172273

(Custom)

RB-6 Roppe, 4" Cove

Color: RP100, Black



CPT-34

Important Disclaimer: Colors presented in this file are provided for general color information only. Due to many different monitor settings on individual computers and different light sources - these finishes may appear from actual color. Actual samples are available from the FPDC/FPS library located on the 8th floor of FHB or may be ordered directly from manufacturers.

THE UNIVERSITY OF TEXAS

MDAnderson
~~Cancer Center~~

FACILITIES
MANAGEMENT
OFFICE OF

FACILITIES PLANNING,
DESIGN AND
CONSTRUCTION

INTERIOR FINISH STANDARDS
FOR
1155 PRESSLER
CANCERPREVENTIONBUILDING
(CPB)

SHEET TITLE:

CPB
ELEVATOR LOBBY
FLOOR 1

LAST UPDATE:

01/05/2016

SHEET NO.:

19 OF 25

FILE NAME: ODGECBCPBR3.indd

PRINT

BACK TO
T.O.C.

NEXT PAGE

FINISH LEGEND

FLOORS/BASE

CPT-43 Interface

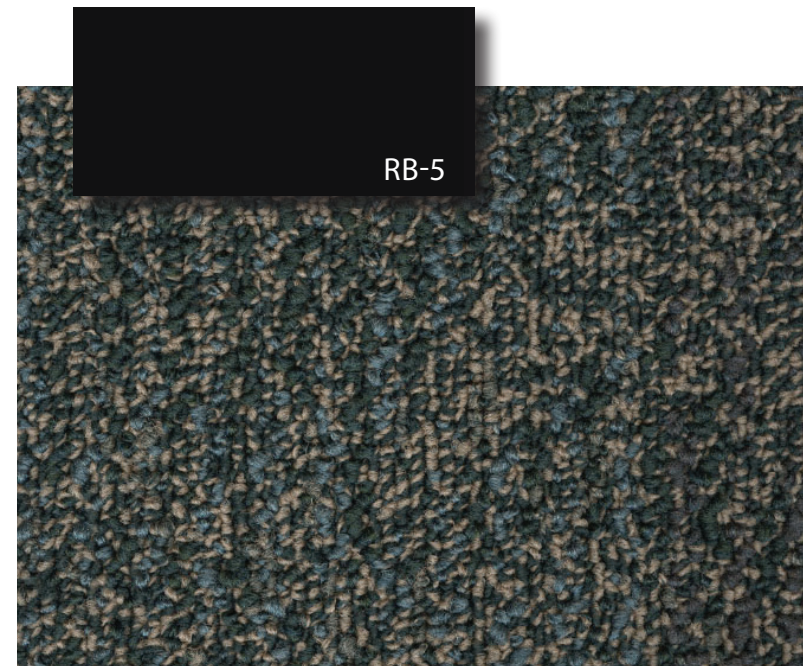
Pattern: Nature Trails

Color: "Heartland", 172273

(Custom)

RB-6 Roppe, 4" Cove

Color: RP100, Black



CPT-34

Important Disclaimer: Colors presented in this file are provided for general color information only. Due to many different monitor settings on individual computers and different light sources - these finishes may appear from actual color. Actual samples are available from the FPDC/FPS library located on the 8th floor of FHB or may be ordered directly from manufacturers.

THE UNIVERSITY OF TEXAS

MD Anderson
Cancer Center

FACILITIES
MANAGEMENT
OFFICE OF

FACILITIES PLANNING,
DESIGN AND
CONSTRUCTION

INTERIOR FINISH STANDARDS
FOR
1155 PRESSLER
CANCERPREVENTIONBUILDING
(CPB)

SHEET TITLE:

CPB
ELEVATOR LOBBY
FLOOR 2

LAST UPDATE:

01/05/2016

SHEET NO.:

20 OF 25

FILE NAME: ODGECBCPBR3.indd

PRINT

BACK TO
T.O.C.

NEXT PAGE

FINISH LEGEND

FLOORS/BASE

CPT-43 Interface

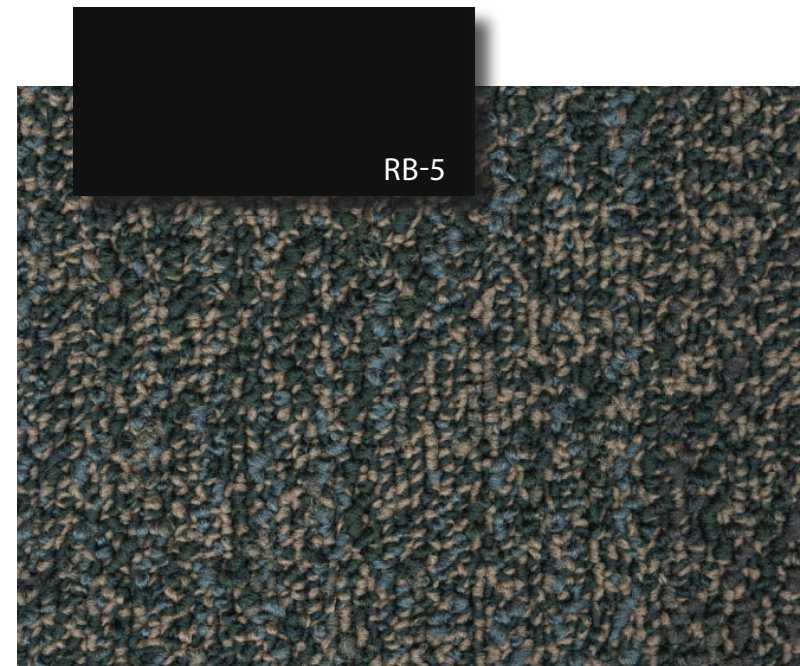
Pattern: Nature Trails

Color: "Heartland", 172273

(Custom)

RB-6 Roppe, 4" Cove

Color: RP100, Black



CPT-34

Important Disclaimer: Colors presented in this file are provided for general color information only. Due to many different monitor settings on individual computers and different light sources - these finishes may appear from actual color. Actual samples are available from the FPDC/FPS library located on the 8th floor of FHB or may be ordered directly from manufacturers.

THE UNIVERSITY OF TEXAS

MDAnderson
~~Cancer Center~~

FACILITIES
MANAGEMENT
OFFICE OF

FACILITIES PLANNING,
DESIGN AND
CONSTRUCTION

INTERIOR FINISH STANDARDS
FOR
1155 PRESSLER
CANCERPREVENTIONBUILDING
(CPB)

SHEET TITLE:

CPB
ELEVATOR LOBBY
FLOORS 3-7

LAST UPDATE:

01/05/2016

SHEET NO.:

21 OF 25

FILE NAME: ODGECBCPBR3.indd

PRINT

BACK TO
T.O.C.

NEXT PAGE

FINISH LEGEND

FLOORS/BASE

CPT-43 Interface

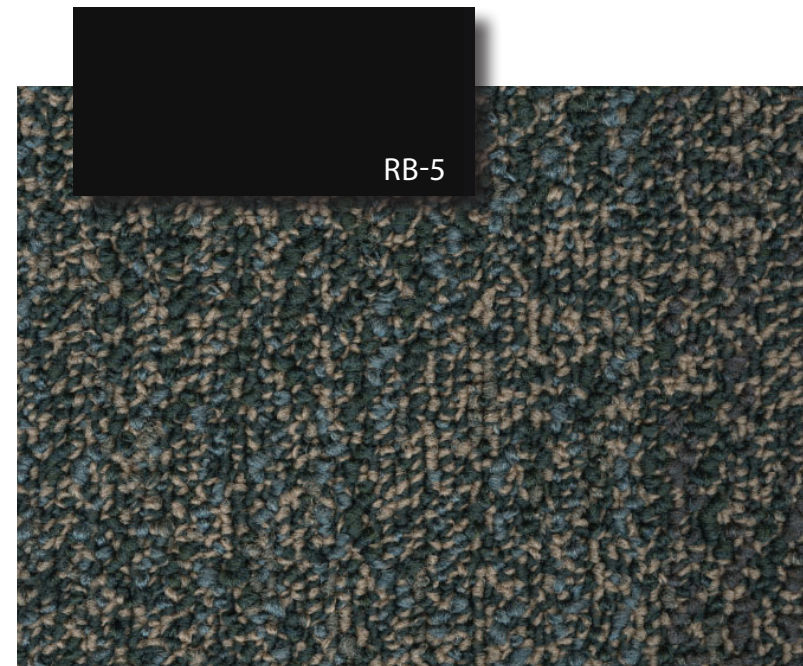
Pattern: Nature Trails

Color: "Heartland", 172273

(Custom)

RB-6 Roppe, 4" Cove

Color: RP100, Black



CPT-34

Important Disclaimer: Colors presented in this file are provided for general color information only. Due to many different monitor settings on individual computers and different light sources - these finishes may appear from actual color. Actual samples are available from the FPDC/FPS library located on the 8th floor of FHB or may be ordered directly from manufacturers.

THE UNIVERSITY OF TEXAS

MDAnderson
~~Cancer Center~~

FACILITIES
MANAGEMENT
OFFICE OF

FACILITIES PLANNING,
DESIGN AND
CONSTRUCTION

INTERIOR FINISH STANDARDS
FOR
1155 PRESSLER
CANCERPREVENTIONBUILDING
(CPB)

SHEET TITLE:

CPB
ELEVATOR LOBBY
FLOOR 8

LAST UPDATE:

01/05/2016

SHEET NO.:

22 OF 25

FILE NAME: ODGECBCPBR3.indd

PRINT

BACK TO
T.O.C.

NEXT PAGE

FINISH LEGEND

DOORS/FRAMES

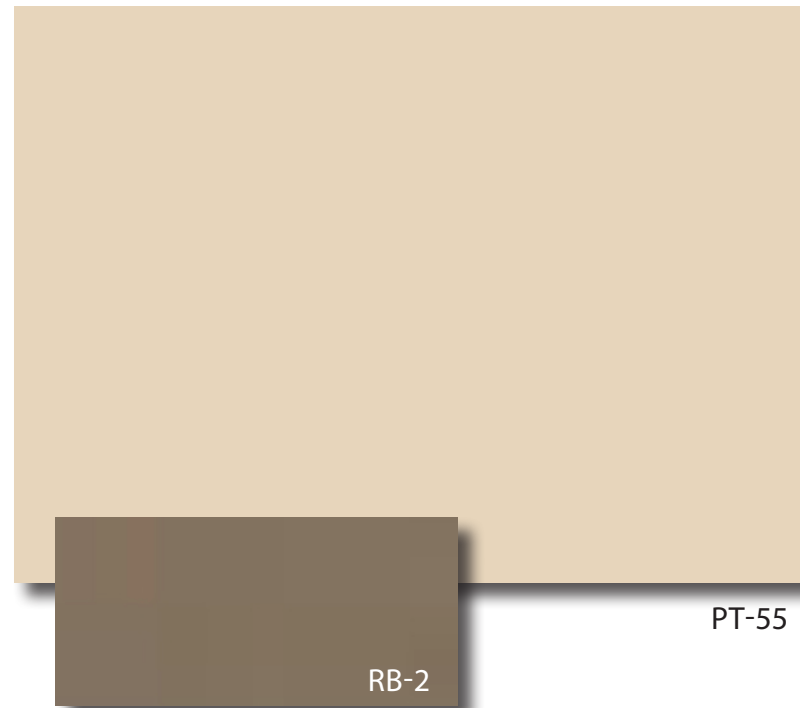
- PL-38 Nevamar
No.: WA-0002E, Tangier Anigre
- PT-56 Benjamin Moore
Color: AC-32, Prismo Dunes
Finish: Semi-Gross

WALLS

- PT-55 Benjamin Moore (Field)
Color: OC-4, Brandy Cream
Finish: Satin

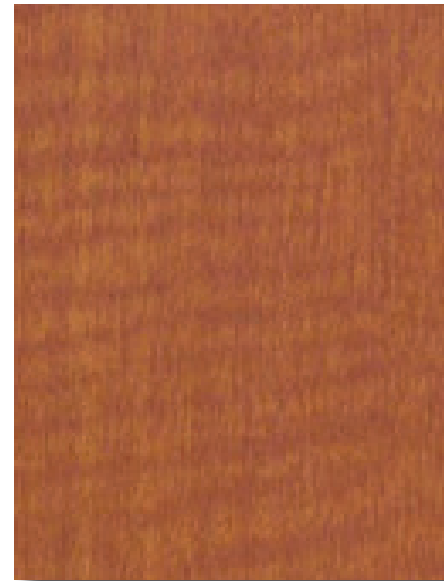
BASE

- RB-6 Roppe, 4" Coved
Color: 80, Fawn



PT-55

RB-2



PL-38



PT-56

Important Disclaimer: Colors presented in this file are provided for general color information only. Due to many different monitor settings on individual computers and different light sources - these finishes may appear from actual color. Actual samples are available from the FPDC/FPS library located on the 8th floor of FHB or may be ordered directly from manufacturers.

THE UNIVERSITY OF TEXAS

MDAnderson
~~Cancer Center~~

FACILITIES
MANAGEMENT
OFFICE OF

FACILITIES PLANNING,
DESIGN AND
CONSTRUCTION

INTERIOR FINISH STANDARDS
FOR
1155 PRESSLER
CANCERPREVENTIONBUILDING
(CPB)

SHEET TITLE:

CPB
STORAGE ROOM

LAST UPDATE:

01/05/2016

SHEET NO.:

23 OF 25

FILE NAME: ODGECBCPBR3.indd

PRINT

BACK TO
T.O.C.

NEXT PAGE

FINISH LEGEND

CEILING

ACT-2 Armstrong
 No.: 770, Cortega
 Color: White
 Finish: Medium Texture
 Size: 2'x2'x5/8"

DOORS/ FRAMES

PL-38 Nevamar
 No.: WA-0002E, Tangier Anigre

PT-56 Benjamin Moore
 Color: AC-32, Prismo Dunes
 Finish: Semi-Gloss

WALLS

TLW-11 DalTile,"Diamante", 12"x12" (Field)
 Color: PO24, Sabbia
 Finish: Polished

TLW-15 DalTile,"Diamante", 12"x12"(Accent)
 Color: PO27, Ardesia
 Finish: Polished

TLW-16 DalTile,"Diamante", 12"x12"(Accent)
 Color: PO31, Verde
 Finish: Polished

FLOORS/ BASE

TLF-18 DalTile,"Diamante",12"x12"(Field)
 Color: PO24, Sabbia
 Finish: Matte

TLW-11 DalTile,"Diamante", 12"x12"Trim
 Color: PO24, Sabbia
 Finish: Polished

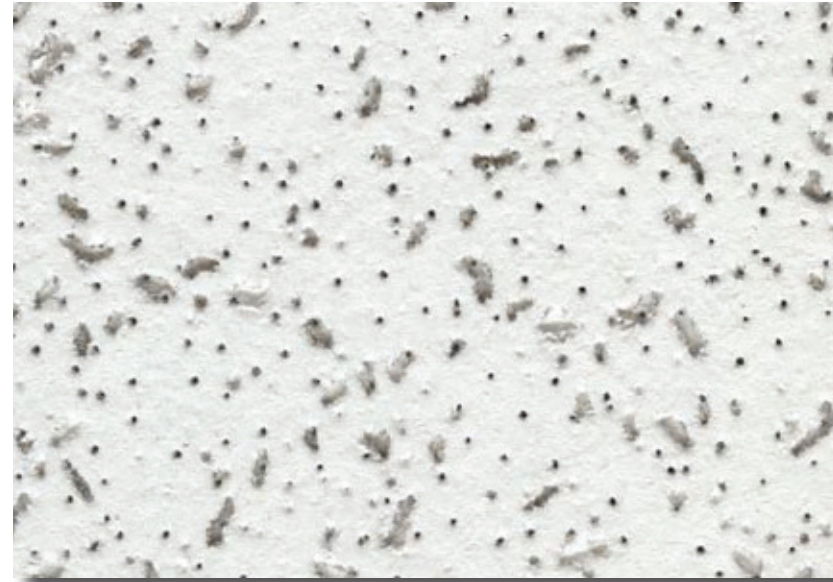
ARCHITECTURAL WOODWORK

PL-3 Nevamar(Partitions-overphenolicresincore)
 Color: #W8348CognacBirdseyeVelvet

SSM-8 Dupon,"Corian" (Sink)
 Color: Bisque

SSM-13 Dupon,"Corian" (Sink Counter)
 Color: Rainforest

Important Disclaimer: Colors presented in this file are provided for general color information only. Due to many different monitor settings on individual computers and different light sources - these finishes may appear from actual color. Actual samples are available from the FPDC/FPS library located on the 8th floor of FHB or may be ordered directly from manufacturers.



ACT-2



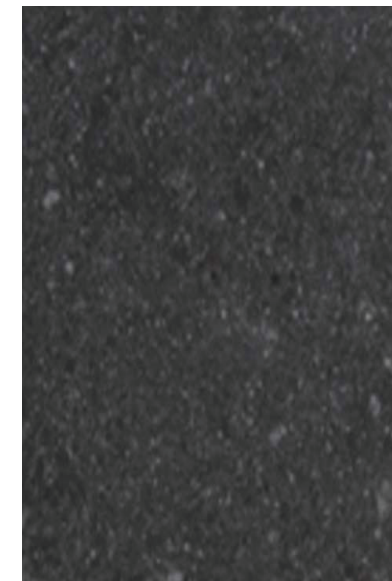
PL-38



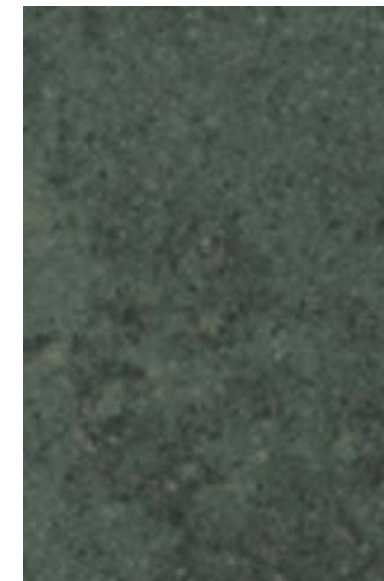
PT-56



TLW-11



TLW-15



TLW-16



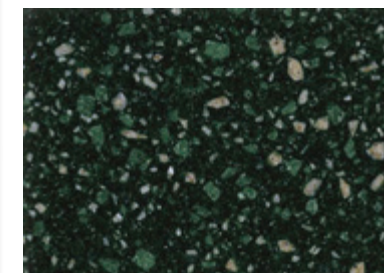
TLF-18



PL-3



SSM-8



SSM-13

SHEET TITLE:

CPB
 PUBLIC TOILETS

LAST UPDATE:

01/05/2016

SHEET NO.:

24 OF 25

FILE NAME: ODGECBCPBR3.indd

PRINT

BACK TO
 T.O.C.

NEXT PAGE

DOCUMENT REVISION HISTORY

Issue	Date	Revision Description	Revisor
Rev. 0	7/06/2010	Initial Adoption of CPB Interior Finishes.	JK, KB, CY
Rev. 1	08/21/2011	Updates/ edits to finish schedule.	JKT/ LT
Rev. 2	01/13/2014	Updates to finish schedule, changed departmental name.	JKT
Rev. 3	01/05/2016	Updates/ edits to finish schedule.	JKT/ LT

**FACILITIES
MANAGEMENT
OFFICE OF**

FACILITIES PLANNING,
DESIGN AND
CONSTRUCTION

INTERIOR FINISH STANDARDS
FOR
1155 PRESSLER
CANCERPREVENTIONBUILDING
(CPB)

SHEET TITLE:

**CPB
DOCUMENT REVISION
HISTORY**

LAST UPDATE:

01/05/2016

SHEET NO.:

25 OF 25

FILE NAME: ODGECBCPBR3.indd