

TABLE OF CONTENTS

SHEET:

- 1 - TABLE OF CONTENTS
- 2 - FINISH SCHEDULE - 1/17
- 3 - FINISH SCHEDULE - 2/17
- 4 - FINISH SCHEDULE - 3/17
- 5 - FINISH SCHEDULE - 4/17
- 6 - FINISH SCHEDULE - 5/17
- 7 - FINISH SCHEDULE - 6/17
- 8 - FINISH SCHEDULE - 7/17
- 9 - FINISH SCHEDULE - 8/17
- 10 - FINISH SCHEDULE - 9/17
- 11 - FINISH SCHEDULE - 10/17
- 12 - FINISH SCHEDULE - 11/17
- 13 - FINISH SCHEDULE - 12/17
- 14 - FINISH SCHEDULE - 13/17
- 15 - FINISH SCHEDULE - 14/17
- 16 - FINISH SCHEDULE - 15/17
- 17 - FINISH SCHEDULE - 16/17
- 18 - FINISH SCHEDULE - 17/17
- 19 - APPEARANCE CENTER
- 20 - BREAK ROOMS OR WORK ROOMS
- 21 - BRIDGE TO CPB (LEVELS 3-7)
- 22 - BRIDGE TO CPB (LEVEL 8)
- 23 - BRIDGE TO PRESSLER GARAGE
- 24 - CHAPEL
- 25 - CONFERENCE RMS (LVLS 4-8)
- 26 - CORRIDORS (CLINIC AREAS)
- 27 - CORRIDORS (PUBLIC FLR. 2)
- 28 - CORRIDORS (STAFF)
- 29 - ELEVATOR LOBBY (LEVEL 2)
- 30 - ELEVATOR LOBBY
(PUBLIC FLRS 3-8)
- 31 - ELEVATOR LOBBY (STAFF)
- 32 - EXAM ROOMS & TREATMENT
ROOMS
- 33 - LOBBIES LEVEL 2 (TREE
SCULPTURE & WEST LOBBY)
- 34 - GENERAL OFFICE AREAS
- 35 - PUBLIC & RETAIL CENTERS
- 36 - STAIRWELLS
- 37 - STORAGE ROOMS
- 38 - TOILETS (PUBLIC)
- 39 - TOILETS (SINGLE USER &
STAFF)
- 40 - UTILITY RMS (CLEAN & SOILED)
- 41 - WAITING ROOMS (OUTPATIENT)
- 42 - DOCUMENT REVISION HISTORY

Important Disclaimer: Colors presented in this file are provided for general color information only. Due to many different monitor settings on individual computers and different light sources - these finishes may appear from actual color. Actual samples are available from the FPDC/FPS library located on the 8th floor of FHB or may be ordered directly from manufacturers.



MAYS CLINIC BUILDING

THE UNIVERSITY OF TEXAS
**MD Anderson
Cancer Center**

FACILITIES MANAGEMENT OFFICE OF

FACILITIES PLANNING,
DESIGN AND
CONSTRUCTION

INTERIOR FINISH STANDARDS
FOR

1220 Holcombe Blvd
Mays Clinic
(ACB)

SHEET TITLE:

ACB TABLE OF CONTENTS

LAST UPDATE:

01/05/2016

SHEET NO.:

1 OF 42

PRINT

EXIT

NEXT PAGE

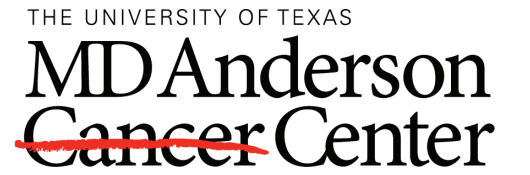
Interior Finish Standards
Mays Clinic Bldg (ACB)

1220 Holcombe
 Updated : 04/16/2015 (LCT)

This schedule is intended to convey the general MDACC "standard" products used in the indicated room types to assist with the **Design Development phase only** of renovation or new construction projects.
 Finish legends and room finish schedules for construction documents **MUST** be reviewed and approved by the MDACC Planner/Designer assigned to the project.
 All Planner/Designers are responsible for verifying the information herein for accuracy.
 Contact Facilities Planning, Design and Construction/Facilities Planning Services (FPS) at ext. 2-2207 to clarify "special" finishes and applications.

02/16/2015, per Denise Hanley the following paint spec is used throughout Mays on walls: Corotech water based single phase epoxy, eggshell finish.

Room Type	Flooring	Base	Walls (see note about wall finish above)	Wall & Corner Guards	Doors	Door Frames	Ceiling	Millwork / Casework	Misc/Other	Window Covering
Appearance Center Level 2	CPT-43 Shaw Paparazzi # EW24 / 59320 ZsaZsa # 20761	RB-15 Roppe 4" Resilient Coved Base Color: #140-TS Fawn <i>Historical</i> RB-6 Johnsonite Resilient Base Style: 4" Cove Base Color: 80 Fawn	PT-55 Benjamin Moore Brandy Cream OC-4 Finish: Satin PL-40 Wilsonart Golden Anigre #10768-60 <i>Appearance Ctr. Display Alcoves</i> FWC-4 Maharam Style: Fabric Wrap Panel Product: Parallel 901180 Color: 002 Argent Location: Appearance Center & Gift Shop at Display Walls	N/A	Entry Door Aluminum Frame w/ Glass Interior Door PL-38 Nevamar Tangier Anigre WA-0002E	PT-56 Benjamin Moore Pismo Dunes AC-32 SemiGloss	ACT-2 Armstrong "Cortega 770" 2'x2' White	PL-40 Wilsonart Color: Golden Anigre #10768-60 PL-22 Nevamar Cognac Birdseye #W8348V Velvet Finish <i>Reception Desk Accent Countertops</i> SSM-9 Dupont "Corian" Style: Cast Plastic Color: Evergreen	<i>Specialty Glass</i> Color: Clear Dimensions: 1/2" Tempered, All Edges to be polished. NO tags <i>Specialty Glass</i> Color: Mirrored Glass Size: 1/8" <i>Specialty Glass</i> Vision Products VP 9.0.3 1/4" Laminated Glass <i>Dressing Room Bench Cushions</i> Arc Com Night Watch AC-65583 Amethyst #4	N/A
Break Rooms and Work Rooms Staff	CPT-99 Tandus Flooring Atoll 03333 Color: Branch 13215 24" x 24" Must install monolithic Reducer / Transition Strip? <i>Historical</i> CPT-39 Interface Southern Plains #2844 Grassland Reducer / Transition Strip 1.5" Johnsonite Fawn SHV-2 Armstrong "Medintech" Freesia Pearl # 86485 Welding Rod WR-2 Armstrong Freesia Pearl # 96485	RB-15 Roppe 4" Resilient Coved Base Color: #140-TS Fawn <i>Historical</i> RB-6 Johnsonite Resilient Base Style: 4" Cove Base Color: 80 Fawn	PT-55 Benjamin Moore Brandy Cream OC-4 Finish: Satin	N/A	PL-38 Nevamar Tangier Anigre WA-0002E	PT-56 Benjamin Moore Pismo Dunes AC-32 SemiGloss	ACT-2 Armstrong "Cortega 770" 2'x2' White	PL-38 Nevamar Tangier Anigre WA-0002E <i>Counter Tops</i> PL-10 Formica 7708-58 Flax Gauze <i>Edge Banding</i> WT-11 Doellken Wood Tape 6501 Flax Gauze <i>Counter Tops</i> <i>Historical</i> PL-37 Wilsonart Color: Burnished Spruce #4797-60 Vinyl Edge: WT-18 Doellken Wood Tape # 9157 Teal 3mm PVC 1/8" for countertops	LKR-7 Lyon Ventilated Lockers Beige	WS-4 Thermoveil Dense Basketweave 1300 Series Eggshell # 1316



FACILITIES
 MANAGEMENT
 OFFICE OF
 FACILITIES PLANNING,
 DESIGN AND
 CONSTRUCTION

INTERIOR FINISH STANDARDS
 FOR
 1220 Holcombe Blvd
Mays Clinic
 (ACB)

SHEET TITLE:

ACB
 FINISH SCHEDULE
 1/17

LAST UPDATE:

01/05/2016

SHEET NO.:

2 OF 42

Interior Finish Standards
Mays Clinic Bldg (ACB)

1220 Holcombe
 Updated : 04/16/2015 (LCT)

This schedule is intended to convey the general MDACC "standard" products used in the indicated room types to assist with the **Design Development phase only** of renovation or new construction projects.
 Finish legends and room finish schedules for construction documents **MUST** be reviewed and approved by the MDACC Planner/Designer assigned to the project.
 All Planner/Designers are responsible for verifying the information herein for accuracy.
 Contact Facilities Planning, Design and Construction/Facilities Planning Services (FPS) at ext. 2-2207 to clarify "special" finishes and applications.

02/16/2015, per Denise Hanley the following paint spec is used throughout Mays on walls: Corotech water based single phase epoxy, eggshell finish.

Room Type	Flooring	Base	Walls (see note about wall finish above)	Wall & Corner Guards	Doors	Door Frames	Ceiling	Millwork / Casework	Misc/Other	Window Covering
Bridge to CPB Level 2	CPT-34 Interface "Nature Trails" Custom Color #172273 04/2011 Changed Yarn System NEW #176614 <u>Access Pathway "Sticks"</u> CPT-36 Interface "Paint Box" 16624 06/08/2011 Interface Changed yarn system from Antron to Universal yarn. NEW #1470002500 Color: Mediterranean # 3533 06/08/2011 NEW COLOR #101917	RB-15 Roppe 4" Resilient Coved Base Color: #140-TS Fawn <u>Historical</u> RB-6 Johnsonite Resilient Base Style: 4" Cove Base Color: 80 Fawn	PT-55 Benjamin Moore Brandy Cream OC-4 Finish: Satin		PT-56 Benjamin Moore Pismo Dunes AC-32 SemiGloss PT-55 Benjamin Moore Brandy Cream OC-4 Finish: Satin	PT-56 Benjamin Moore Pismo Dunes AC-32 SemiGloss PT-55 Benjamin Moore Brandy Cream OC-4 Finish: Satin	ACT-2 Armstrong "Cortega 770" 2'x2' White <u>Painted Gyp Board</u> PT-79 Benjamin Moore Interior Ready Mix White	N/A	N/A	N/A
Bridge to CPB Levels 3-7	CPT-104 Lees "By the Book" Ingenious 337 24" x 24" Must install quarter-turned <u>Historical</u> CPT-37 Lee's "Heartland T" # D8442 (MDA# CL423) Capri # 307 (18" x 18" Special)	RB-15 Roppe 4" Resilient Coved Base Color: #140-TS Fawn <u>Historical</u> RB-6 Johnsonite Resilient Base Style: 4" Cove Base Color: 80 Fawn	PT-55 Benjamin Moore Brandy Cream OC-4 Finish: Satin	N/A	PT-56 Benjamin Moore Pismo Dunes AC-32 SemiGloss PT-55 Benjamin Moore Brandy Cream OC-4 Finish: Satin	PT-56 Benjamin Moore Pismo Dunes AC-32 SemiGloss PT-55 Benjamin Moore Brandy Cream OC-4 Finish: Satin	ACT-2 Armstrong "Cortega 770" 2'x2' White <u>Painted Gyp Board</u> PT-79 Benjamin Moore Interior Ready Mix White	N/A	N/A	N/A
Bridge to CPB Level 8	CPT-34 Interface "Nature Trails" Custom Color #172273 04/2011 Changed Yarn System NEW #176614	RB-5 Roppe 4" coved #RP100 Black	PT-55 Benjamin Moore Brandy Cream OC-4 Finish: Satin	N/A	PT-56 Benjamin Moore Pismo Dunes AC-32 SemiGloss	PT-56 Benjamin Moore Pismo Dunes AC-32 SemiGloss	ACT-2 Armstrong "Cortega 770" 2'x2' White <u>Painted Gyp Board</u> PT-79 Benjamin Moore Interior Ready Mix White	N/A	N/A	N/A

FACILITIES
 MANAGEMENT
 OFFICE OF
 FACILITIES PLANNING,
 DESIGN AND
 CONSTRUCTION

INTERIOR FINISH STANDARDS
 FOR
 1220 Holcombe Blvd
Mays Clinic
 (ACB)

SHEET TITLE:

ACB
 FINISH SCHEDULE
 2/17

LAST UPDATE:

01/05/2016

SHEET NO.:

3 OF 42

Interior Finish Standards

Mays Clinic Bldg (ACB)

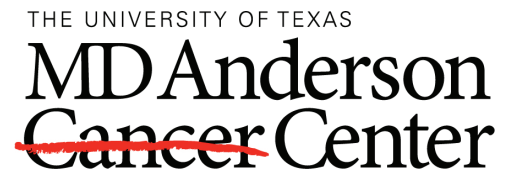
1220 Holcombe

Updated : 04/16/2015 (LCT)

This schedule is intended to convey the general MDACC "standard" products used in the indicated room types to assist with the **Design Development phase only** of renovation or new construction projects. Finish legends and room finish schedules for construction documents **MUST** be reviewed and approved by the MDACC Planner/Designer assigned to the project. All Planner/Designers are responsible for verifying the information herein for accuracy. Contact Facilities Planning, Design and Construction/Facilities Planning Services (FPS) at ext. 2-2207 to clarify "special" finishes and applications.

02/16/2015, per Denise Hanley the following paint spec is used throughout Mays on walls: Corotech water based single phase epoxy, eggshell finish.

Room Type	Flooring	Base	Walls (see note about wall finish above)	Wall & Corner Guards	Doors	Door Frames	Ceiling	Millwork / Casework	Misc/Other	Window Covering
Bridge to Main Campus Level 2	<u>Field Carpet</u> CPT-35 Interface "Adaptations" 50 cm x 50 cm Carpet Tile Custom Color #172277 04/2011 Changed Yarn System NEW #176615 <u>Access Pathway "Sticks"</u> CPT-36 Interface "Paint Box" 16624 NEW #1470002500 Color: Mediterranean # 3533 NEW COLOR #101917	RB-15 Roppe 4" Resilient Coved Base Color: #140-TS Fawn <u>Historical</u> RB-6 <u>Johnsonite</u> <u>Resilient Base</u> Style: 4" Cove Base Color: 80 Fawn	PT-55 Benjamin Moore Brandy Cream OC-4 Finish: Satin	CG-5 Acrovyn Corner Guards CG-20 2" wing #198 Beige Desert	PL-38 Nevamar Tangier Anigre WA-0002E PT-56 Benjamin Moore Pismo Dunes AC-32 SemiGloss	PT-56 Benjamin Moore Pismo Dunes AC-32 SemiGloss	ACT-2 Armstrong "Cortega 770" 2'x2' White <u>Painted Gyp Board</u> PT-79 Benjamin Moore Interior Ready Mix White	<u>Sill/Bench at Pedestrian Bridge</u> PL-37 Wilsonart Burnished Spruce # 4797-60 BG-3 Pawling EBT-30 2" Accent Rail Color: 377 Teal	N/A	N/A
Bridge to Pressler Garage Level 2	CPT-34 Interface "Nature Trails" Custom Color #172273 04/2011 Changed Yarn System NEW #176614	RB-15 Roppe 4" Resilient Coved Base Color: #140-TS Fawn <u>Historical</u> RB-6 <u>Johnsonite</u> <u>Resilient Base</u> Style: 4" Cove Base Color: 80 Fawn	PT-55 Benjamin Moore Brandy Cream OC-4 Finish: Satin	CG-5 Acrovyn Corner Guards CG-20 2" wing #198 Beige Desert	PL-38 Nevamar Tangier Anigre WA-0002E PT-55 Benjamin Moore Brandy Cream OC-4 Finish: Satin	PT-56 Benjamin Moore Pismo Dunes AC-32 SemiGloss PT-55 Benjamin Moore Brandy Cream OC-4 Finish: Satin	ACT-2 Armstrong "Cortega 770" 2'x2' White <u>Painted Gyp Board</u> PT-79 Benjamin Moore Interior Ready Mix White	PL-37 Wilsonart Burnished Spruce # 4797-60 BG-3 Pawling EBT-30 2" Accent Rail Color: 377 Teal	N/A	N/A
Bridge to West Lobby Level 2	<u>Field Carpet</u> CPT-34 Interface "Nature Trails" Custom Color #172273 04/2011 Changed Yarn System NEW #176614 <u>Access Pathway "Sticks"</u> CPT-36 Interface "Paint Box" 16624 NEW #1470002500 Color: Mediterranean # 3533 NEW COLOR #101917	RB-15 Roppe 4" Resilient Coved Base Color: #140-TS Fawn <u>Historical</u> RB-6 <u>Johnsonite</u> <u>Resilient Base</u> Style: 4" Cove Base Color: 80 Fawn (Also used West Lobby to CPB)	PT-55 Benjamin Moore Brandy Cream OC-4 Finish: Satin	N/A	PT-55 Benjamin Moore Brandy Cream OC-4 Finish: Satin	PT-55 Benjamin Moore Brandy Cream OC-4 Finish: Satin	ACT-11 Ceiling Plus OB-19, Custom Perforated Metal Ceiling Color: White 2'x6' Curved Ceiling Panels <u>Painted Gyp Board</u> PT-79 Benjamin Moore Interior Ready Mix White PT-55 Benjamin Moore Brandy Cream OC-4 Finish: Satin	N/A	N/A	N/A



FACILITIES
MANAGEMENT
OFFICE OF
FACILITIES PLANNING,
DESIGN AND
CONSTRUCTION

INTERIOR FINISH STANDARDS
FOR

1220 Holcombe Blvd
Mays Clinic
(ACB)

SHEET TITLE:

ACB
FINISH SCHEDULE
3/17

LAST UPDATE:

01/05/2016

SHEET NO.:

4 OF 42

Interior Finish Standards
Mays Clinic Bldg (ACB)

1220 Holcombe
 Updated : 04/16/2015 (LCT)

This schedule is intended to convey the general MDACC "standard" products used in the indicated room types to assist with the **Design Development phase only** of renovation or new construction projects.
 Finish legends and room finish schedules for construction documents **MUST** be reviewed and approved by the MDACC Planner/Designer assigned to the project.
 All Planner/Designers are responsible for verifying the information herein for accuracy.
 Contact Facilities Planning, Design and Construction/Facilities Planning Services (FPS) at ext. 2-2207 to clarify "special" finishes and applications.

02/16/2015, per Denise Hanley the following paint spec is used throughout Mays on walls: Corotech water based single phase epoxy, eggshell finish.

Room Type	Flooring	Base	Walls (see note about wall finish above)	Wall & Corner Guards	Doors	Door Frames	Ceiling	Millwork / Casework	Misc/Other	Window Covering
Chapel Level 2	CPT-43 Shaw Paparazzi # EW24 / 59320 ZsaZsa # 20761 18" x 18" Quarter turned at Chapel	PT-73 Benjamin Moore Horizon Grey # 2141-50 Finish: Semi Gloss Location: Wood base painted at painted walls <u>Inside Storage Closets</u> RB-15 Roppe 4" Resilient Coved Base Color: #140-TS Fawn <u>Historical</u> RB-6 Johnsonite Resilient Base Style: 4" Cove Base Color: 80 Fawn	FWC-6 Maharam "Parallel" 901180 Fog # 3 <u>Above Windows at Bench Area</u> <u>Used at High Wall Alcoves</u> VWC-25 Anya Larkin Ltd Opaline Leaf Paper Color: 2505 Amber <u>At Window Wall</u> PT-56 Benjamin Moore Pismo Dunes AC-32 SemiGloss <u>Inside Storage Closets</u> PT-55 Benjamin Moore Brandy Cream OC-4 Finish: Satin	N/A	Wood Finished to match PL-38 w/ frosted glass inserts <u>Inside Closet Doors</u> PT-79 Benjamin Moore Interior Ready Mix White	PT-56 Benjamin Moore Pismo Dunes AC-32 SemiGloss <u>Chapel Entry</u> PT-79 Benjamin Moore Interior Ready Mix White	ACT-2 Armstrong "Cortega 770" 2'x2' White <u>Painted Gyp Board</u> PT-79 Benjamin Moore Interior Ready Mix White PT-73 Benjamin Moore Horizon Grey # 2141-50 PT-56 Benjamin Moore Pismo Dunes AC-32	N/A	<u>Glass Inserts at Back Wall with White Frames</u> Vision Products VP 9.0.3 1/4" Laminated Glass No tags	<u>Black-Out Shade</u> BWS-1 MechoShade Oyster # 0706 <u>Filtering Shade</u> WS-4 Thermoveil Dense Basketweave 1300 Series Eggshell # 1316
Child Visitation Level 2	<u>Field Carpet</u> CPT-35 Interface "Adaptations" 50 cm x 50 cm Carpet Tile Custom Color #172277 04/2011 Changed Yarn System NEW #176615 <u>Accent Carpet</u> CPT-46 Interface "Paint Box" 16624 Aquamarine #3523 CPT-38 Interface "Paint Box" 16624 Mallard #3549 CPT-40 Interface "Paint Box" 16624 NEW #147000250024 Eggplant #3527 NEW COLOR #100946 SHV-2 Armstrong : "Medintech" Color: Freesia Pearl #86485 Welding Rod WR-2 Armstrong Freesia Pearl # 96485	RB-4 Johnsonite 4" Color: 07 Wood Violet	PT-77 Benjamin Moore French Violet # 1427 Finish: Satin Location: As Noted on Plan PT-78 Benjamin Moore Color: HC-132 Harrisburg Green Finish: Semi-gloss Description: Medium green-blue Location: As Noted on Plan PT-70 Benjamin Moore Color: 823 Steel Blue Finish: Semi-gloss Description: Medium Blue Location: As Noted on Plan PT-67 Benjamin Moore Color: 2152-40 Golden Tan Finish: Semi-Gloss Description: Medium Golden Yellow Location: As Noted on Plan	N/A	PL-38 Nevamar Tangier Anigre WA-0002E	PT-56 Benjamin Moore Pismo Dunes AC-32 SemiGloss	ACT-2 Armstrong "Cortega 770" 2'x2' White	<u>Base Cabinets Vertical</u> PL-84 Formica 7816-58 Yellow Solidz <u>Base Cabinets Counter & Backsplash</u> PL-85 Abet Laminati 1240 SEI <u>PVC Edgebanding</u> WT-19 Doelken Woodtape 3mm Color: Burgundy # 9027 <u>Upper Cabinets</u> PL-45 Nevamar ALV-004T Royal Allusion Textured	<u>Filtering Shade</u> WS-4 Thermoveil Dense Basketweave 1300 Series Eggshell # 1316	

FACILITIES
 MANAGEMENT
 OFFICE OF
 FACILITIES PLANNING,
 DESIGN AND
 CONSTRUCTION

INTERIOR FINISH STANDARDS
 FOR
 1220 Holcombe Blvd
Mays Clinic
 (ACB)

SHEET TITLE:
**ACB
 FINISH SCHEDULE
 4/17**

LAST UPDATE:
01/05/2016

SHEET NO.:
5 OF 42

Interior Finish Standards
Mays Clinic Bldg (ACB)

1220 Holcombe
 Updated : 04/16/2015 (LCT)

This schedule is intended to convey the general MDACC "standard" products used in the indicated room types to assist with the **Design Development phase only** of renovation or new construction projects.
 Finish legends and room finish schedules for construction documents **MUST** be reviewed and approved by the MDACC Planner/Designer assigned to the project.
 All Planner/Designers are responsible for verifying the information herein for accuracy.
 Contact Facilities Planning, Design and Construction/Facilities Planning Services (FPS) at ext. 2-2207 to clarify "special" finishes and applications.

02/16/2015, per Denise Hanley the following paint spec is used throughout Mays on walls: Corotech water based single phase epoxy, eggshell finish.

Room Type	Flooring	Base	Walls (see note about wall finish above)	Wall & Corner Guards	Doors	Door Frames	Ceiling	Millwork / Casework	Misc/Other	Window Covering
Conference Center Level 1	CPT-100 Tandus Flooring Liana 04164 Color: Branch 13215 24" x 24" Must install monolithic <i>Historical</i> <u>Pre-Conference, Entry Area and Corridors</u> CPT-39 Interface Southern Plains #2844 Grassland <i>Historical</i> <u>Inside Classrooms / Conference Rooms</u> CPT-44 Interface Route 66 II #16711 Color: Holbrook # 5191 Color: #2493	RB-15 Roppe 4" Resilient Coved Base Color: #140-TS Fawn <i>Historical</i> RB-6 Johnsonite Resilient Base Style: 4" Cove Base Color: 80 Fawn	PT-55 Benjamin Moore Brandy Cream OC-4 Finish: Satin <u>Pre-Conference Area</u> VWC-22 Maharam Style: Honor Weave 395510 Color: 012 Flax Description: 21 oz. Type II Vinyl Wall Covering <u>Accent Wall</u> PT-66 Benjamin Moore Tuscany # 1208 Finish: Eggshell <u>Movable partitions</u> FWC-2 Guilford of Maine Style: Fabric Wallcovering Product: Lido 2858 Color: 013 Greenbay <u>Fabric Wrapped Panels</u> AWT-9 Guilford of Maine Fabric: Lido 2858 Color: 013 Green Bay <u>A/V Room at Conf Ctr</u> PT-72 Benjamin Moore Color: 2120-10 Jet Black Finish: Eggshell	CG-5 Acrovyn Corner Guards CG-20 2" wing #198 Beige Desert CG-4 Acrovyn Corner Guards CG-10 3" wing #198 Beige Desert	PL-38 Nevamar Tangier Anigre WA-0002E PT-56 Benjamin Moore Pismo Dunes AC-32 SemiGloss	PT-56 Benjamin Moore Pismo Dunes AC-32 SemiGloss	ACT-13 Capaul Symphony Custom 1' x 4' 1" Thick Revealed Edge Color: White ACT-2 Armstrong "Cortega 770" 2'x2' White <u>Painted Gyp Board</u> PT-79 Benjamin Moore Interior Ready Mix White <u>Pre-Conference Area</u> <u>Ceiling Detail - Ring</u> PT-182 Polomyx Color: P443-C39E Finish: Semi-gloss	PL-38 Nevamar Tangier Anigre WA-0002E SSM-9 Dupont "Corian" Evergreen	<u>Class Room Tables</u> PL-29 Nevamar Color: Taupe Matrix #MR-2-5T (MR-2005T) Textured	
Conference Rooms Levels 4-8 Contact FIT for Teleconference Room finishes.	CPT-99 Tandus Flooring Atoll 03333 Color: Branch 13215 24" x 24" Must install monolithic <i>Historical</i> CPT-39 Interface Southern Plains #2844 Grassland	RB-15 Roppe 4" Resilient Coved Base Color: #140-TS Fawn <i>Historical</i> RB-6 Johnsonite Resilient Base Style: 4" Cove Base Color: 80 Fawn	PT-55 Benjamin Moore Brandy Cream OC-4 Finish: Satin <u>Moveable Wall</u> FWC-11 Wolf Gordon Custom: WG3584686	N/A	PL-38 Nevamar Tangier Anigre WA-0002E	PT-56 Benjamin Moore Pismo Dunes AC-32 SemiGloss	ACT-2 Armstrong "Cortega 770" 2'x2' White	N/A	N/A	<u>Black-Out Shade</u> BWS-1 MechoShade Oyster # 0706 <u>Filtering Shade</u> WS-4 Thermoveil Dense Basketweave 1300 Series Eggshell # 1316

FACILITIES
 MANAGEMENT
 OFFICE OF
 FACILITIES PLANNING,
 DESIGN AND
 CONSTRUCTION

INTERIOR FINISH STANDARDS
 FOR

1220 Holcombe Blvd
Mays Clinic
 (ACB)

SHEET TITLE:

ACB
 FINISH SCHEDULE
 5/17

LAST UPDATE:

01/05/2016

SHEET NO.:

6 OF 42

Interior Finish Standards

Mays Clinic Bldg (ACB)

1220 Holcombe

Updated : 04/16/2015 (LCT)

This schedule is intended to convey the general MDACC "standard" products used in the indicated room types to assist with the **Design Development phase only** of renovation or new construction projects. Finish legends and room finish schedules for construction documents **MUST** be reviewed and approved by the MDACC Planner/Designer assigned to the project. All Planner/Designers are responsible for verifying the information herein for accuracy. Contact Facilities Planning, Design and Construction/Facilities Planning Services (FPS) at ext. 2-2207 to clarify "special" finishes and applications.

02/16/2015, per Denise Hanley the following paint spec is used throughout Mays on walls: Corotech water based single phase epoxy, eggshell finish.

Room Type	Flooring	Base	Walls (see note about wall finish above)	Wall & Corner Guards	Doors	Door Frames	Ceiling	Millwork / Casework	Misc/Other	Window Covering
Corridors Clinic Areas	<u>Field</u> SHV-2 Armstrong "Medintech" Freesia Pearl # 86485 WR-2 Armstrong Freesia Pearl # 96485 <u>Accent Stripe</u> SHV-23 Armstrong "Medintech" Viburnam Green #86492 WR-3 Armstrong # 96492 Viburnam Green	RB-15 Roppe 4" Resilient Coved Base Color: #140-TS Fawn <u>Historical</u> RB-6 Johnsonite <u>Resilient Base</u> Style: 4" Cove Base Color: 80 Fawn	<u>Staff Corridor</u> VWC- 21 Maharam Style: Lush Color: 12 Tourmaline Description: Green Vinyl Wall Covering <u>Patient Corridor</u> VWC-23 Maharam Style: Lush Color: 10 Whimsy Description: Beige Pink, Type II Vinyl Wall Covering	HR-1 Pawling Handrail BR-400 Beige Desert BG-2 Pawling 8" Bumper Beige Desert #385 BG-4 Pawling 6" Crash Rail Beige Desert	PL-38 Nevamar Tangier Anigre WA-0002E <u>Door Lite Trim</u> PT-16 Benjamin Moore semi gloss Cinnamon Stick #MO2-1275	PT-56 Benjamin Moore Pismo Dunes AC-32 SemiGloss	ACT-2 Armstrong "Cortega 770" 2'x2' White <u>Painted Gyp Board</u> PT-79 Benjamin Moore Interior Ready Mix White	PL-38 Nevamar Tangier Anigre WA-0002E PL-37 Wilsonart Burnished Spruce # 4797-60 <i>PL-37 Disc. Replacement needs to be assessed at time of renovation to the area</i> <u>PVC Edgebanding:</u> WT-18 Doelken Woodtape 3mm Color: Teal #9157	Rain Glass <u>Film at Entrance to Corridors</u> GF-1 Solyx Infinite Optiks #3 "Clear Hammered Sheet of Ice"	
Corridors Public Level 2	CPT-34 Interface "Nature Trails" Custom Color #172273 04/2011 Changed Yarn System NEW #176614 <u>Level 2</u> <u>Access Pathway "Sticks"</u> CPT-36 Interface "Paint Box" 46624 NEW #1470002500 Color: Mediterranean #- 3533 NEW COLOR #101917	STW-4 National Tile & Terrazo 18" Marble Heveleun Green (polished) STW-5 National Tile & Terrazo 6" Marble Heveleun Green (polished)	PT-55 Benjamin Moore Brandy Cream OC-4 Finish: Satin	Stainless Steel	PL-38 Nevamar Tangier Anigre WA-0002E	PT-56 Benjamin Moore Pismo Dunes AC-32 SemiGloss	ACT-2 Armstrong "Cortega 770" 2'x2' White <u>Painted Gyp Board</u> PT-79 Benjamin Moore Interior Ready Mix White PT-55 Benjamin Moore Brandy Cream OC-4 Finish: Satin	<u>Vertical Surfaces</u> PL-38 Nevamar Tangier Anigre WA-0002E <u>Vertical Accents</u> PL-40 Wilsonart Color: Golden Anigre #10768-60 <u>Transaction Top Accents & Base</u> SSM-9 Dupont "Corian" Evergreen <u>Work Surface</u> SSM-10 Dupont "Corian" Abalone <u>Tackboard</u>	<u>Recessed Display Cases</u> PL-38 Nevamar Tangier Anigre WA-0002E Brushes Stainless Steel <u>Tackboard</u>	WS-4 Thermoveil Dense Basketweave 1300 Series Eggshell # 1316
Corridors Public Levels 3-8	CPT-34 Interface "Nature Trails" Custom Color ———— 04/2011 Changed Yarn System NEW #176614 <u>Accent border upper floors</u> CPT-21 Lees Colorbridge S7202 537 Mirage 18" x 18" Green Solid	RB-15 Roppe 4" Resilient Coved Base Color: #140-TS Fawn <u>Historical</u> RB-6 Johnsonite <u>Resilient Base</u> Style: 4" Cove Base Color: 80 Fawn	PT-55 Benjamin Moore Brandy Cream OC-4 Finish: Satin	BG-2 Pawlings Style 8" Bumper Guard Color: Beige Desert #385 Location: Bottom mounted above scheduled base	PL-38 Nevamar Tangier Anigre WA-0002E	PT-56 Benjamin Moore Pismo Dunes AC-32 SemiGloss	ACT-2 Armstrong Cortega 770 Color: White 2'x2'x5/8" Square Edge lay-in tiles			

FACILITIES
MANAGEMENT
OFFICE OF
FACILITIES PLANNING,
DESIGN AND
CONSTRUCTION

INTERIOR FINISH STANDARDS
FOR

1220 Holcombe Blvd
Mays Clinic
(ACB)

SHEET TITLE:

**ACB
FINISH SCHEDULE
6/17**

LAST UPDATE:

01/05/2016

SHEET NO.:

7 OF 42

PRINT

BACK TO
T.O.C.

NEXT PAGE

Interior Finish Standards

Mays Clinic Bldg (ACB)

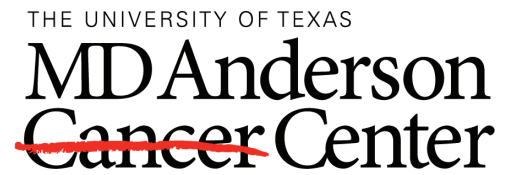
1220 Holcombe

Updated : 04/16/2015 (LCT)

*This schedule is intended to convey the general MDACC "standard" products used in the indicated room types to assist with the **Design Development phase only** of renovation or new construction projects.
 Finish legends and room finish schedules for construction documents **MUST** be reviewed and approved by the MDACC Planner/Designer as assigned to the project.
 All Planner/Designers are responsible for verifying the information herein for accuracy.
 Contact Facilities Planning, Design and Construction/Facilities Planning Services (FPS) at ext. 2-2207 to clarify "special" finishes and applications.*

02/16/2015, per Denise Hanley the following paint spec is used throughout Mays on walls: Corotech water based single phase epoxy, eggshell finish.

Room Type	Flooring	Base	Walls (see note about wall finish above)	Wall & Corner Guards	Doors	Door Frames	Ceiling	Millwork / Casework	Misc/Other	Window Covering	
Corridors Staff (Outside of Clinic Spaces)	SHV-2 Armstrong : "Medintech" Color: Freesia Pearl #86485 Location: Upper Floors Patient/ Staff Corridors. <u>Welding Rod</u> WR-2 Armstrong Freesia Pearl # 96485	RB-15 Roppe 4" Resilient Coved Base Color: #140-TS Fawn <u>Historical</u> RB-6 Johnsonite Resilient Base Style: 4" Cove Base Color: 80 Fawn	PT-55 Benjamin Moore Brandy Cream OC-4 Finish: Satin <u>Accent Walls</u> PT-54 Benjamin Moore #690 Grenada Villa PT-59 Benjamin Moore # 719 Hemlock PT-62 Benjamin Moore #1412 Central Mauve	HR-1 Pawling Handrail BR-400 Beige Desert BG-2 Pawling 8" Bumper Beige Desert #385 BG-4 Pawling 6" Crash Rail Beige Desert	PL-38 Nevamar Tangier Anigre WA-0002E <u>Door Lite Trim</u> PT-16 Benjamin Moore semi gloss Cinnamon Stick #MO2-1275	PT-56 Benjamin Moore Pismo Dunes AC-32 SemiGloss	ACT-2 Armstrong Cortega 770 Color: White 2'x2'x5/8" Square Edge lay-in tiles	N/A	N/A	WS-4 Thermoveil Dense Basketweave 1300 Series Eggshell # 1316	
Dark Room Level 4			PT-72 Benjamin Moore Color 2120-10 Jet Black Finish: Flat								
Dining Area Level 2	GPT-42 Shaw/Style Acadia SQ-59434- 59434- Finish: Echoes 31330 48" x 48" Tile Quarter Turned at Dining CPT-56 Replacement Carpet Tiles Interface Patten: M0424 Sample #: 249225-035		PT-67 Benjamin Moore Color: 2152-40 Golden Tan Finish: Eggshell PT-68 Benjamin Moore Color: 756 Varsity Blues Finish: Eggshell PT-69 Benjamin Moore Color:2067-40 Blue Lapis Finish: Eggshell PT-70 Benjamin Moore Color: 823 Steel Blue Finish: Eggshell PT-71 Benjamin Moore Color: 641 Everglades Finish: Eggshell				ACT-15 Wall Technology Duraspan, Custom Color: White "Clouds" <u>Dining Ceiling Tiles</u> <u>as Noted on Plans</u> PT-69 Benjamin Moore Color:2067-40 Blue Lapis Finish: Flat Description: Black	<u>Banquettes</u> <u>New Seat Fabric</u> Design Tex Kalahari 2486-804 Typhoon <u>Banquettes</u> <u>New Back Fabric</u> Architex Seabed 95006 Honolulu Beach	<u>Glass at Banquette</u> GL-3 Joel Berman Onda Cast Glass Vision Glass 3/8" Tempered Glass Pattern to run vertically <u>Dining Wall System</u> GL-4 Vision Products VP 9.0.3 1/4" Laminated Glass GLT-3 Daltile Product: Glass Reflections Color: Ultimate Blue GR06 Dimensions: 2"x2" Grout: C-Cure #35 Catalina Jade GLT-4 Daltile Product: Glass Reflections Color: Almost Aqua GR05 GLT-5 Daltile Product: Glass Reflections Color: Blue Lagoon GR11 2"x2" Grout: C-Cure #35 Catalina Jane		



FACILITIES
MANAGEMENT
OFFICE OF
FACILITIES PLANNING,
DESIGN AND
CONSTRUCTION

INTERIOR FINISH STANDARDS
FOR
1220 Holcombe Blvd
Mays Clinic
(ACB)

SHEET TITLE:

ACB
FINISH SCHEDULE
7/17

LAST UPDATE:

01/05/2016

SHEET NO.:

8 OF 42

PRINT

BACK TO
T.O.C.

NEXT PAGE

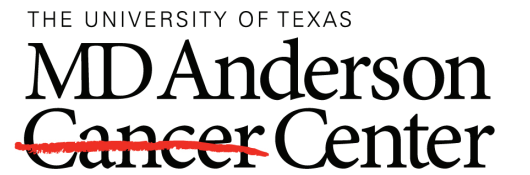
Interior Finish Standards
Mays Clinic Bldg (ACB)

1220 Holcombe
 Updated : 04/16/2015 (LCT)

This schedule is intended to convey the general MDACC "standard" products used in the indicated room types to assist with the Design Development phase only of renovation or new construction projects. Finish legends and room finish schedules for construction documents MUST be reviewed and approved by the MDACC Planner/Designer assigned to the project. All Planner/Designers are responsible for verifying the information herein for accuracy. Contact Facilities Planning, Design and Construction/Facilities Planning Services (FPS) at ext. 2-2207 to clarify "special" finishes and applications.

02/16/2015, per Denise Hanley the following paint spec is used throughout Mays on walls: Corotech water based single phase epoxy, eggshell finish.

Room Type	Flooring	Base	Walls (see note about wall finish above)	Wall & Corner Guards	Doors	Door Frames	Ceiling	Millwork / Casework	Misc/Other	Window Covering
Elevator Cabs Patient Elevators (P, R & S)	TRZ-6 American Marble Mosaic Co. Custom Color: 26 Description: 3 Parts Red, 3 Parts Black & 2 Parts Brown Chips		STW-2 National Tile & Terrazzo Style: Granite Color: Texas Pink Granite Finish: Polished		<u>Elevator Doors</u> Brushed Stainless Steel	<u>Elevator Door Trim</u> Brushed Stainless Steel	PL-41 Wilsonart Color: Pearl Silver LS #D487-07 Ceiling at patient elevator cabs			
Elevator Cabs Patient Elevators (T & U)	CPT-34 Interface "Nature Trails" Custom Color #172273 04/2011 Changed Yarn System NEW #176614		PL-38 Nevamar Tangier Anigre WA-0002E Brushed Stainless Steel Accents		<u>Elevator Doors</u> Brushed Stainless Steel	<u>Elevator Door Trim</u> Brushed Stainless Steel	PL-41 Wilsonart Color: Pearl Silver LS #D487-07 Ceiling at patient elevator cabs			
Elevator Cabs Staff Elevators	SHV-2 Armstrong : "Medintech" Color: Freesia Pearl #86485 Location: Upper Floors Patient/ Staff Corridors. <u>Welding Rod</u> WR-2 Armstrong Freesia Pearl # 96485		PL-38 Nevamar Tangier Anigre WA-0002E Brushed Stainless Steel Accents		<u>Elevator Doors</u> Brushed Stainless Steel	<u>Elevator Door Trim</u> Brushed Stainless Steel	PL-41 Wilsonart Color: Pearl Silver LS #D487-07 Ceiling at patient elevator cabs			
Elevator Lobby Levels P1, P2 & P3	CPT-99 Tandus Flooring Atoll 03333 Color: Branch 13215 24" x 24" Must install monolithic <u>Historical P1</u> CPT-44 Interface Route 66 II #16744- Color: Holbrook #5194 Color: #2493 <u>P2 & P3</u> CPT-41 Lees Set Up Modular #DD763 Finish: 508 Mineral 18" x 18" Walk off carpet tile Quarter tured at all exterior entry doors	<u>P1, P2 & P3</u> RB-35 Roppe 6" Resilient Coved Base Color: #140-TS Fawn <u>Historical RB-7</u> <u>Johnsonite Resilient Base</u> Style: 6" Cove Base Color: Fawn	<u>P1, P2 & P3</u> <u>Garage Elevator Lobby Walls</u> STW-1 National Tile & Terrazzo Style: Granite Color: Texas Pink Granite Finish: Honed Material: 3/4" Slab Grout: C-Cure #257 "Hot Chocolate" <u>P1, P2 & P3</u> <u>Garage Elevator Base & Door Surrounds</u> STW-2 National Tile & Terrazzo Style: Granite Color: Texas Pink Granite Finish: Polished <u>P1, P2 & P3</u> PT-55 Benjamin Moore Product: OC-4 Brandy Cream Finish: Eggshell		<u>Elevator Doors</u> Brushed Stainless Steel	<u>Elevator Door Trim</u> Brushed Stainless Steel	<u>P1, P2 & P3</u> ACT-2 Armstrong Cortega 770 Color: White 2'x2'x5/8" Square Edge lay-in tiles <u>P2 & P3</u> <u>Painted Gypboard</u> PT-79 Benjamin Moore Interior Ready Mix White			



FACILITIES
 MANAGEMENT
 OFFICE OF
 FACILITIES PLANNING,
 DESIGN AND
 CONSTRUCTION

INTERIOR FINISH STANDARDS
 FOR
 1220 Holcombe Blvd
Mays Clinic
 (ACB)

SHEET TITLE:

ACB
 FINISH SCHEDULE
 8/17

LAST UPDATE:

01/05/2016

SHEET NO.:

9 OF 42

PRINT

BACK TO
 T.O.C.

NEXT PAGE

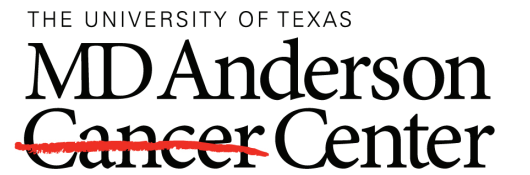
Interior Finish Standards
Mays Clinic Bldg (ACB)

1220 Holcombe
 Updated : 04/16/2015 (LCT)

This schedule is intended to convey the general MDACC "standard" products used in the indicated room types to assist with the **Design Development phase only** of renovation or new construction projects.
 Finish legends and room finish schedules for construction documents **MUST** be reviewed and approved by the MDACC Planner/Designer assigned to the project.
 All Planner/Designers are responsible for verifying the information herein for accuracy.
 Contact Facilities Planning, Design and Construction/Facilities Planning Services (FPS) at ext. 2-2207 to clarify "special" finishes and applications.

02/16/2015, per Denise Hanley the following paint spec is used throughout Mays on walls: Corotech water based single phase epoxy, eggshell finish.

Room Type	Flooring	Base	Walls (see note about wall finish above)	Wall & Corner Guards	Doors	Door Frames	Ceiling	Millwork / Casework	Misc/Other	Window Covering
Elevator Lobby Level 1	Field TRZ-6 American Marble Mosaic Co. Custom Color: 26 Description: 3 Parts Red, 3 Parts Black & 2 Parts Brown Chips Accents TRZ-7 American Marble Mosaic Co. Product: Custom Color: Custom Sample 2-B Description: Medium Grey Matrix with 8 Parts Red, 1 Part Black & 2 Parts Brown Chips.	RB-35 Roppe 6" Resilient Coved Base Color: #140-TS Fawn Historical RB-7 <i>Johnsonite Resilient Base</i> Style: 6" Cove Base Color: Fawn STW-4 National Tile & Terrazo 18" Marble Heveleun Green (polished) Location: 1st & 2nd Floor Public Spaces	PT-55 Benjamin Moore Product: OC-4 Brandy Cream Finish: Eggshell Wood Veneer to match PL-38		Elevator Doors Brushed Stainless Steel	Elevator Door Trim Brushed Stainless Steel	ACT-2 Armstrong Cortega 770 Color: White 2'x2'x5/8" Square Edge lay-in tiles Painted Gypboard PT-79 Benjamin Moore Interior Ready Mix White PT-56 Benjamin Moore Pismo Dunes AC-32 SemiGloss		DGG-6 Vision Products Color: Milk Glass ALL Elevator Lobby Laterns	
Elevator Lobby Level 2	CPT-34 Interface "Nature Trails" Custom Color #472273 04/2011 Changed Yarn System NEW #176614	STW-4 National Tile & Terrazo 18" Marble Heveleun Green (polished) Location: 1st & 2nd Floor Public Spaces	Wood Veneer to match PL-38		Elevator Doors Brushed Stainless Steel	Elevator Door Trim Brushed Stainless Steel			DGG-6 Vision Products Color: Milk Glass ALL Elevator Lobby Laterns	
Elevator Lobby Public Levels 3-8	CPT-100 Tandus Flooring Liana 04164 Color: Branch 13215 24" x 24" Must install monolithic Historical CPT-44 <i>Interface</i> Route 66 II #16744 Color: Holbrook # 5194 Color: #2493	18" Base at Upper Floor Elevators Lobbies SSM-9 DuPont "Corian" Style: Cast Plastic Color: Evergreen	PL-38 Nevamar Tangier Anigre WA-0002E		Elevator Doors Brushed Stainless Steel	Elevator Door Trim Brushed Stainless Steel	Painted Gypboard PT-79 Benjamin Moore Interior Ready Mix White		DGG-6 Vision Products Color: Milk Glass ALL Elevator Lobby Laterns	
Elevator Lobby Staff Levels 2-8	SHV-2 Armstrong Medintech Freesia Pearl # 86485 WR-2 Armstrong Freesia Pearl # 96485	RB-15 Roppe 4" Resilient Coved Base Color: #140-TS Fawn Historical RB-6 <i>Johnsonite Resilient Base</i> Style: 4" Cove Base Color: 80 Fawn	PT-55 Benjamin Moore Brandy Cream OC-4 Finish: Satin VWC-23 Maharam Style: Lush Color: 10 Whimsy Description: Beige Pink, Type II Vinyl Wall Covering		PL-38 Nevamar Tangier Anigre WA-0002E Elevator Doors Brushed Stainless Steel	PT-56 Benjamin Moore Pismo Dunes AC-32 SemiGloss Elevator Door Trim Brushed Stainless Steel	ACT-2 Armstrong "Cortega 770" 2'x2' White Painted Gyp Board PT-79 Benjamin Moore Interior Ready Mix White			
Escalator Surrounds									DGG-5 Vision Products Custom Color: Clear w/ Etched Pattern 1/4" Tempered Laminated Glass	



FACILITIES
 MANAGEMENT
 OFFICE OF
 FACILITIES PLANNING,
 DESIGN AND
 CONSTRUCTION

INTERIOR FINISH STANDARDS
 FOR
 1220 Holcombe Blvd
Mays Clinic
 (ACB)

SHEET TITLE:

ACB
 FINISH SCHEDULE
 9/17

LAST UPDATE:

01/05/2016

SHEET NO.:

10 OF 42

PRINT

BACK TO
 T.O.C.

NEXT PAGE

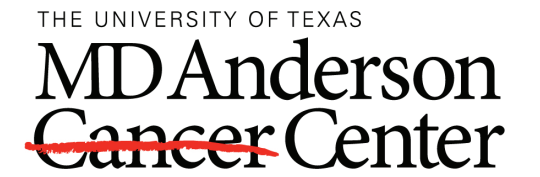
Interior Finish Standards
Mays Clinic Bldg (ACB)

1220 Holcombe
 Updated : 04/16/2015 (LCT)

This schedule is intended to convey the general MDACC "standard" products used in the indicated room types to assist with the **Design Development phase only** of renovation or new construction projects.
 Finish legends and room finish schedules for construction documents **MUST** be reviewed and approved by the MDACC Planner/Designer assigned to the project.
 All Planner/Designers are responsible for verifying the information herein for accuracy.
 Contact Facilities Planning, Design and Construction/Facilities Planning Services (FPS) at ext. 2-2207 to clarify "special" finishes and applications.

02/16/2015, per Denise Hanley the following paint spec is used throughout Mays on walls: Corotech water based single phase epoxy, eggshell finish.

Room Type	Flooring	Base	Walls (see note about wall finish above)	Wall & Corner Guards	Doors	Door Frames	Ceiling	Millwork / Casework	Misc/Other	Window Covering
Exam Rooms/ Treatment Rms	SHV-2 Armstrong Medintech Freesia Pearl # 86485 WR-2 Armstrong Freesia Pearl # 96485	RB-15 Roppe 4" Resilient Coved Base Color: #140-TS Fawn <i>Historical</i> RB-6 Johnsonite Resilient Base Style: 4" Cove Base Color: 80 Fawn	PT-55 Benjamin Moore Brandy Cream OC-4 Finish: Satin <i>Accent Walls</i> PT-53 Benjamin Moore # 689 Rhine River PT-58 Benjamin Moore # 718 Ocean City Blue PT-61 Benjamin Moore # 1411 North Cascades	N/A	PL-38 Nevamar Tangier Anigre WA-0002E	PT-56 Benjamin Moore Pismo Dunes AC-32 SemiGloss	ACT-2 Armstrong Cortega 770 Color: White 2'x2'x5/8" Square Edge lay-in tiles	PL-38 Nevamar Tangier Anigre WA-0002E <i>Countertops at Exam/ Treatment rooms</i> SSM-12 DuPont "Corian" Color: Tumbled Glass Description: Neutral Background with Colored Specs <i>Sink Bowl</i> SSM-8 Dupont "Corian" Bisque	N/A	N/A
Exterior Entry Walk off carpet tile	CPT-41 Lees Set Up Modular #DD763 Finish: 508 Mineral 18" x 18" Walk off carpet tile Quarter tureded at all exterior entry doors		<i>1st Floor Bertner Ave. Side</i> PT-55 Benjamin Moore Brandy Cream OC-4 Finish: Satin <i>Accent Wall</i> PT-66 Benjamin Moore Tuscany # 1208 Finish:Eggshell				ACT-2 Armstrong Cortega 770 Color: White 2'x2'x5/8" Square Edge lay-in tiles <i>1st Floor Bertner Ave. Side Ceiling Detail - Ring</i> PT-182 Polomyx Color: P443-C39E Finish: Semi-gloss			
Food Service	TRZ-8 American Marble Mosaic Co. Product: Custom Color: White Epoxy Matrix with 5 Parts White & 5 Parts Blue Chips Description: Light Matrix with Blue, White & Grey Chips TRZ-9 American Marble Mosaic Co Product: Custon Color: Sample #5 Description: Light/Medium Blue Matrix with Blue, White & Grey Chips TRZ-10 American Marble Mosaic Co. Product: Custon Color: Sample #6 Description: Medium Blue Matrix with Blue, White & Grey Chips	QT-2 Daltile Size: 6" x 8" Finish/Color: Q44 Grout: Tex-Rite Natural Gray	WCG-23 Kemlite Product#: Fire-X Glasboard w/ Embossed Skin Color: 85 White Dimension: 0.09 Thickness X 4'x9' (Full Height) PT-70 Benjamin Moore Color: 823 Steel Blue Finish: Satin Description: Epoxy Paint Location: Salad Bar Soffitt TLW-13 Daltile Ceramic Wall Tile Style: Glazed Walltile Color: K175-6 Biscuit Size: 6"x6" Finish: Semi-Gloss Grout: C-Cure #25 White Location: Food Service Back Wall QT-2 Daltile Quarry Tile Color: Q44 D26 Size: 8"x8" Grout: Tex Rite - Natural Gray Green	QT-2 Daltile Quarry Tile Color: Q44 Size 8"x8" Grout: Tex Rite - Natural Gray Green Location: Food Service Behind Serving Counter			ACT-14 USG Ceilings Clean Room Climate Plus Class 10M-100M Color: White 2'x2'x5/8"	<i>Food Service Check-Out Counters & Tray Slides</i> SSM-8 DuPont "Corian" Color: Bisque Description: Off White		



FACILITIES
 MANAGEMENT
 OFFICE OF
 FACILITIES PLANNING,
 DESIGN AND
 CONSTRUCTION

INTERIOR FINISH STANDARDS
 FOR

1220 Holcombe Blvd
Mays Clinic
 (ACB)

SHEET TITLE:

ACB
 FINISH SCHEDULE
 10/17

LAST UPDATE:

01/05/2016

SHEET NO.:

11 OF 42

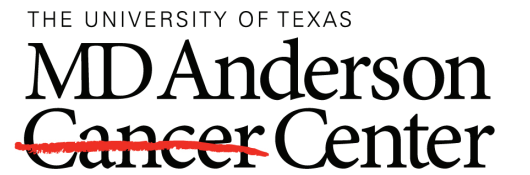
Interior Finish Standards
Mays Clinic Bldg (ACB)

1220 Holcombe
 Updated : 04/16/2015 (LCT)

This schedule is intended to convey the general MDACC "standard" products used in the indicated room types to assist with the **Design Development phase only** of renovation or new construction projects.
 Finish legends and room finish schedules for construction documents **MUST** be reviewed and approved by the MDACC Planner/Designer assigned to the project.
 All Planner/Designers are responsible for verifying the information herein for accuracy.
 Contact Facilities Planning, Design and Construction/Facilities Planning Services (FPS) at ext. 2-2207 to clarify "special" finishes and applications.

02/16/2015, per Denise Hanley the following paint spec is used throughout Mays on walls: Corotech water based single phase epoxy, eggshell finish.

Room Type	Flooring	Base	Walls (see note about wall finish above)	Wall & Corner Guards	Doors	Door Frames	Ceiling	Millwork / Casework	Misc/Other	Window Covering
Gift Shop	CPT-34 Interface "Nature Trails" Custom Color #172273 04/2011 Changed Yarn System NEW #176614	RB-15 Roppe 4" Resilient Coved Base Color: #140-TS Fawn <i>Historical</i> RB-6 Johnsonite Resilient Base Style: 4" Cove Base Color: 80 Fawn	PT-55 Benjamin Moore Brandy Cream OC-4 Finish: Satin <u>Display Areas</u> PL-40 Wilsonart Golden Anigre #10768-60 <u>Slat Wall</u> PL-22 Nevamar Cognac Birdseye #W8348V Velvet Finish <u>Gift Shop Display Alcoves</u> FWC-4 Maharam Style: Fabric Wrap Panel Product: Parallel 901180 Color: 002 Argent	N/A	PL-38 Nevamar Tangier Anigre WA-0002E New	PT-56 Benjamin Moore Pismo Dunes AC-32 SemiGloss Aluminum Frame at Entry	ACT-2 Armstrong Cortega 770 Color: White 2'x2'x5/8" Square Edge lay-in tiles	PL-40 Wilsonart Golden Anigre #10768-60 PL-22 Nevamar Cognac Birdseye #W8348V Velvet Finish <u>Counter Tops</u> SSM-9 Dupont "Corian" Style: Cast Plastic Color: Evergreen	<u>Specialty Glass</u> Color: Clear Dimensions: 1/2" Tempered, All edges to be polished. NO tags	
Lobby Level 1 East Lobby & West Lobby	<u>Field</u> TRZ-6 American Marble Mosaic Co. Custom Color: 26 Description: 3 Parts Red, 3 Parts Black & 2 Parts Brown Chips <u>Accents</u> TRZ-7 American Marble Mosaic Co. Product: Custom Color: Custom Sample 2-B Description: Medium Grey Matrix with 8 Parts Red, 1 Part Black & 2 Parts Brown Chips.	STW-4 National Tile & Terrazo 18" Marble Heveleun Green (polished) Grout: C-Cure # 140 Black Jade Location: 1st & 2nd Floor Public Spaces STW-5 National Tile & Terrazo 6" Marble Heveleun Green (polished) Grout: C-Cure # 140 Black Jade Location: 1st & 2nd Floor Public Spaces					ACT-2 Armstrong Cortega 770 Color: White 2'x2'x5/8" <u>Painted Gyp Board</u> PT-79 Benjamin Moore Interior Ready Mix White PT-55 Benjamin Moore Brandy Cream OC-4 Finish: Satin <u>Ceiling Detail - Ring</u> PT-182 Polomyx Color: P443-C39E Finish: Semi-gloss			



FACILITIES
 MANAGEMENT
 OFFICE OF
 FACILITIES PLANNING,
 DESIGN AND
 CONSTRUCTION

INTERIOR FINISH STANDARDS
 FOR
 1220 Holcombe Blvd
Mays Clinic
 (ACB)

SHEET TITLE:

ACB
 FINISH SCHEDULE
 11/17

LAST UPDATE:

01/05/2016

SHEET NO.:

12 OF 42

Interior Finish Standards

Mays Clinic Bldg (ACB)

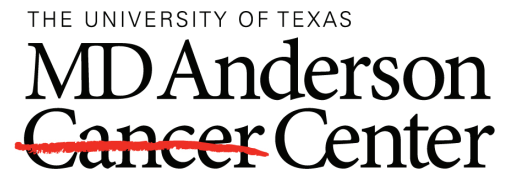
1220 Holcombe

Updated : 04/16/2015 (LCT)

This schedule is intended to convey the general MDACC "standard" products used in the indicated room types to assist with the **Design Development phase only** of renovation or new construction projects. Finish legends and room finish schedules for construction documents **MUST** be reviewed and approved by the MDACC Planner/Designer assigned to the project. All Planner/Designers are responsible for verifying the information herein for accuracy. Contact Facilities Planning, Design and Construction/Facilities Planning Services (FPS) at ext. 2-2207 to clarify "special" finishes and applications.

02/16/2015, per Denise Hanley the following paint spec is used throughout Mays on walls: Corotech water based single phase epoxy, eggshell finish.

Room Type	Flooring	Base	Walls (see note about wall finish above)	Wall & Corner Guards	Doors	Door Frames	Ceiling	Millwork / Casework	Misc/Other	Window Covering
Lobbies Level 2 East Lobby (Tree Sculpture) and West Lobby	CPT-34 Interface "Nature Trails" Custom Color #172273 04/2011 Changed Yarn System NEW #176614	STW-4 National Tile & Terrazo 18" Marble Heveleun Green (polished) Grout: C-Cure # 140 Black Jade Location: 1st & 2nd Floor Public Spaces STW-5 National Tile & Terrazo 6" Marble Heveleun Green (polished) Grout: C-Cure # 140 Black Jade Location: 1st & 2nd Floor Public Spaces	PT-55 Benjamin Moore Brandy Cream OC-4 Finish: Satin Wood veneer to match PL-38 <u>Water Wall</u> STW-1 National Tile & Terrazzo Style: Granite Color: Texas Pink Granite Finish: Honed Material: 3/4" Slab Grout: C-Cure #257 "Hot Chocolate" STW-2 National Tile & Terrazzo Style: Granite Color: Texas Pink Granite Finish: Polished STW-3 National Tile & Terrazzo Style: Granite Color: Texas Pink Granite Finish: Split-faced	N/A	PL-38 Nevamar Tangier Anigre WA-0002E New	PT-56 Benjamin Moore Pismo Dunes AC-32 SemiGloss	<u>Over West Lobby Escalators</u> ACT-10 Ceiling Plus OB-19, Custom Perforated Metal Ceiling Color: White 2'x2' Flat Ceiling Panels <u>Over West Lobby & Bridge to East Lobby</u> ACT-11 Ceiling Plus OB-19, Custom Perforated Metal Ceiling Color: White 2'x6' Curved Ceiling Panels <u>Painted Gyp Board</u> PT-79 Benjamin Moore Interior Ready Mix White PT-55 Benjamin Moore Brandy Cream OC-4 Finish: Satin ACT-2 Armstrong Cortega 770 Color: White 2'x2'x5/8" <u>Ceiling Detail - Ring</u> PT-182 Polomyx Color: P443-C39E Finish: Semi-gloss	<u>Vertical Surfaces</u> PL-38 Nevamar Tangier Anigre WA-0002E <u>Vertical Accents</u> PL-40 Wilsonart Color: Golden Anigre #10768-60 <u>Transaction Top, Accents & Base</u> SSM-9 Dupont "Corian" Evergreen <u>Work Surface</u> SSM-10 Dupont "Corian" Abalone <u>Tackboard</u> <u>Patterned Glass</u>	<u>Columns at Info Desk</u> Metal Finish	
Office Spaces	CPT-99 Tandus Flooring Atoll 03333 Color: Branch 13215 24" x 24" Must install monolithic <u>Historical</u> CPT-39 Interface Southern Plains #2844 Grassland	RB-15 Roppe 4" Resilient Covered Base Color: #140-TS Fawn <u>Historical</u> RB-6 Johnsonite Resilient Base Style: 4" Cove Base Color: 80 Fawn	PT-55 Benjamin Moore Brandy Cream OC-4 Finish: Satin <u>Accent Paint</u> PT-53 Benjamin Moore Color: Rhine River Finish: Eggshell	N/A	PL-38 Nevamar Tangier Anigre WA-0002E	PT-56 Benjamin Moore Pismo Dunes AC-32 SemiGloss	ACT-2 Armstrong Cortega 770 Color: White 2'x2'x5/8" Square Edge lay-in tiles			WS-4 Thermoveil Dense Basketweave 1300 Series Eggshell # 1316



FACILITIES
MANAGEMENT
OFFICE OF
FACILITIES PLANNING,
DESIGN AND
CONSTRUCTION

INTERIOR FINISH STANDARDS
FOR

1220 Holcombe Blvd
Mays Clinic
(ACB)

SHEET TITLE:

ACB
FINISH SCHEDULE
12/17

LAST UPDATE:

01/05/2016

SHEET NO.:

13 OF 42

PRINT

BACK TO
T.O.C.

NEXT PAGE

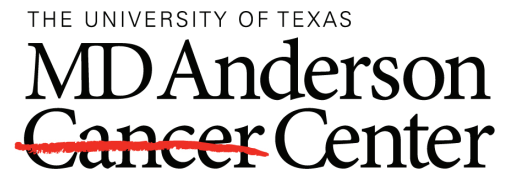
Interior Finish Standards
Mays Clinic Bldg (ACB)

1220 Holcombe
 Updated : 04/16/2015 (LCT)

This schedule is intended to convey the general MDACC "standard" products used in the indicated room types to assist with the **Design Development phase only** of renovation or new construction projects. Finish legends and room finish schedules for construction documents **MUST** be reviewed and approved by the MDACC Planner/Designer assigned to the project. All Planner/Designers are responsible for verifying the information herein for accuracy. Contact Facilities Planning, Design and Construction/Facilities Planning Services (FPS) at ext. 2-2207 to clarify "special" finishes and applications.

02/16/2015, per Denise Hanley the following paint spec is used throughout Mays on walls: Corotech water based single phase epoxy, eggshell finish.

Room Type	Flooring	Base	Walls (see note about wall finish above)	Wall & Corner Guards	Doors	Door Frames	Ceiling	Millwork / Casework	Misc/Other	Window Covering
Operating Rooms	<u>Operating Rooms</u> SHV-25 Armstrong "Medintech" Color Black Granite #86463 Location: Operating Rooms <u>Scrub Sink and Corridor</u> <u>in OR Suites</u> SHV-27 Mannington Style: Assurance 16014 Color: Glacier Sterling Blue									
Physician Work Rooms								<u>Tackboard Between Upper Cabinets & Worksurface</u> FWC-5 Maharam Paradigm, Fabric Wallcovering 395640 Color:004 Jojoba		
Pressler Garage	<u>Elevator Lobby</u> CPT-41 Lees Set Up Modular #DD763 Finish: 508 Mineral 18" x 18" Walk off carpet tile Quarter tureded <u>Reception Area</u> CPT-34 Interface "Nature Trails" Custom Color #472273 04/2011 Changed Yarn System NEW #176614 <u>Historical</u> CPT-19 Lees Flamestitch II # DH333 Delta Green # 401 18" x 18" Special <u>Behind Reception Desk</u> CPT-99 Tandus Flooring Atoll 03333 Color: Branch 13215 24" x 24" Must install monolithic <u>Historical</u> CPT-20 Lee's "Heartland T" # D8442 (MDA# CL423) 18" x 18" Special Delta Green # 401	RB-2 Roppe Pinnacle 4" Covered Base Black-Brown No. RP93	Painted Concrete Blocks		<u>Store Front Glass Entry</u> <u>Reception Area</u> PL-22 Nevamar Cognac Birdseye #W8348V Velvet Finish	Dark Gray PT		PL-22 Nevamar Cognac Birdseye #W8348V Velvet Finish PL- Simulated Green Marble Look		



FACILITIES
 MANAGEMENT
 OFFICE OF
 FACILITIES PLANNING,
 DESIGN AND
 CONSTRUCTION

INTERIOR FINISH STANDARDS
 FOR
 1220 Holcombe Blvd
Mays Clinic
 (ACB)

SHEET TITLE:

ACB
 FINISH SCHEDULE
 13/17

LAST UPDATE:

01/05/2016

SHEET NO.:

14 OF 42

Interior Finish Standards
Mays Clinic Bldg (ACB)

1220 Holcombe
 Updated : 04/16/2015 (LCT)

This schedule is intended to convey the general MDACC "standard" products used in the indicated room types to assist with the **Design Development phase only** of renovation or new construction projects. Finish legends and room finish schedules for construction documents **MUST** be reviewed and approved by the MDACC Planner/Designer assigned to the project. All Planner/Designers are responsible for verifying the information herein for accuracy. Contact Facilities Planning, Design and Construction/Facilities Planning Services (FPS) at ext. 2-2207 to clarify "special" finishes and applications.

02/16/2015, per Denise Hanley the following paint spec is used throughout Mays on walls: Corotech water based single phase epoxy, eggshell finish.

Room Type	Flooring	Base	Walls (see note about wall finish above)	Wall & Corner Guards	Doors	Door Frames	Ceiling	Millwork / Casework	Misc/Other	Window Covering
Public & Retail Centers Level 2 Int'l Patient Cntr Diagnostic Cntr Patient Affairs Learning Cntr Admin Services Pharmacy	CPT-34 Interface "Nature Trails" Custom Color #172273 04/2011 Changed Yarn System NEW #176614 <u>Back of House Spaces & Break Rooms</u> SHV-2 Armstrong Medintech Freesia Pearl # 86485 WR-2 Armstrong Freesia Pearl # 96485	RB-15 Roppe 4" Resilient Coved Base Color: #140-TS Fawn <u>Historical</u> RB-6 Johnsonite Resilient Base Style: 4" Cove Base Color: 80 Fawn	PT-55 Benjamin Moore Brandy Cream OC-4 Finish: Satin VWC-22 (when applicable) Maharam Style: Honor Weave 395510 Color: 012 Flax Description: 21 oz. Type II Vinyl Wall Covering <u>Accent Wall at Learning Center</u> PT-66 Benjamin Moore Tuscany # 1208 Finish:Eggshell		PL-38 Nevamar Tangier Anigre WA-0002E Rainglass inserts when applicable <u>Entrys</u> Storefront glass	PT-56 Benjamin Moore Pismo Dunes AC-32 SemiGloss	ACT-2 Armstrong Cortega 770 Color: White 2'x2'x5/8" Square Edge lay-in tiles	PL-38 Nevamar Tangier Anigre WA-0002E <u>Transaction & Accents</u> SSM-9 Dupont "Corian" Evergreen <u>Work Surface</u> SSM-10 Dupont "Corian" Abalone		WS-4 Thermoveil Dense Basketweave 1300 Series Eggshell # 1316
Stairwells	<u>Stairwell Treads & Risers</u> RF-1 Roppe "Vantage Profile" # 168 Deep Water <u>Stairwell Landings</u> RF-2 Roppe "Vantage Profile" #454 Helecho	RB-23 Roppe 4" Coved # 168 Deep Water	PT-55 Benjamin Moore Brandy Cream OC-4 Finish: Satin	<u>Handrails</u> PT-57 BM # 691 Dartmouth Green	PT-56 Benjamin Moore Pismo Dunes AC-32 SemiGloss	PT-56 Benjamin Moore Pismo Dunes AC-32 SemiGloss	ACT-2 Armstrong Cortega 770 Color: White 2'x2'x5/8" Square Edge lay-in tiles <u>Painted Gypboard</u> PT-55 Benjamin Moore Brandy Cream OC-4 Finish: Satin	N/A	N/A	
Storage Room	SHV-2 Armstrong Medintech Freesia Pearl # 86485 WR-2 Armstrong Freesia Pearl # 96485	RB-15 Roppe 4" Resilient Coved Base Color: #140-TS Fawn <u>Historical</u> RB-6 Johnsonite Resilient Base Style: 4" Cove Base Color: 80 Fawn	PT-55 Benjamin Moore Brandy Cream OC-4 Finish: Satin	N/A	PT-56 Benjamin Moore Pismo Dunes AC-32 SemiGloss	PT-56 Benjamin Moore Pismo Dunes AC-32 SemiGloss	ACT-2 Armstrong Cortega 770 Color: White 2'x2'x5/8" Square Edge lay-in tiles	N/A	N/A	N/A
Toilets Public Restrooms	TLF-18 Daltile "Diamante" Sabbia # P024 matte 12" x 12" <u>Threshold</u> SSM-11 DuPont "Corian" Color: Beach	TLW-11 Daltile "Diamante" Sabbia # P024 polished 12" x 12" Cut to 4" x 12" TLW-16 Daltile "Diamante" 12" Verde # P031 polished 12" x 12" Cut to 4" x 12"	TLW-11 Daltile "Diamante" Sabbia # P024 polished 12" x 12" TLW-15 Daltile "Diamante" Ardesia # P027 polished 12" x 12" Sized as per Accent Tile TLW-16 Daltile "Diamante" Verde # P031 polished 12" x 12" Sized as per Accent Tile	N/A	PL-38 Nevamar Tangier Anigre WA-0002E	PT-56 Benjamin Moore Pismo Dunes AC-32 SemiGloss	ACT-2 Armstrong Cortega 770 Color: White 2'x2'x5/8" Square Edge lay-in tiles <u>Painted Gypboard</u> PT-79 Benjamin Moore Interior Ready Mix White	<u>Toilet Partitions</u> PLTC-2 w/ PL-22 Nevamar Cognac Birdseye Velvet Over Phenolic Resin Core <u>Sink Counter</u> SSM- 13 Dupont "Corian" Rainforest <u>Sink Bowl</u> SSM-8 Dupont "Corian" Bisque	N/A	N/A

FACILITIES
 MANAGEMENT
 OFFICE OF
 FACILITIES PLANNING,
 DESIGN AND
 CONSTRUCTION

INTERIOR FINISH STANDARDS
 FOR

1220 Holcombe Blvd
Mays Clinic
 (ACB)

SHEET TITLE:

ACB
FINISH SCHEDULE
14/17

LAST UPDATE:

01/05/2016

SHEET NO.:

15 OF **42**

PRINT

BACK TO
T.O.C.

NEXT PAGE

Interior Finish Standards

Mays Clinic Bldg (ACB)

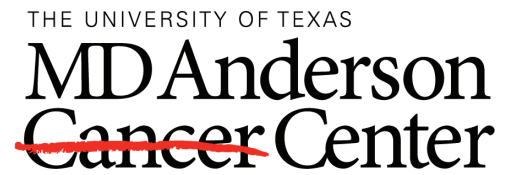
1220 Holcombe

Updated : 04/16/2015 (LCT)

This schedule is intended to convey the general MDACC "standard" products used in the indicated room types to assist with the **Design Development phase only** of renovation or new construction projects. Finish legends and room finish schedules for construction documents **MUST** be reviewed and approved by the MDACC Planner/Designer assigned to the project. All Planner/Designers are responsible for verifying the information herein for accuracy. Contact Facilities Planning, Design and Construction/Facilities Planning Services (FPS) at ext. 2-2207 to clarify "special" finishes and applications.

02/16/2015, per Denise Hanley the following paint spec is used throughout Mays on walls: Corotech water based single phase epoxy, eggshell finish.

Room Type	Flooring	Base	Walls (see note about wall finish above)	Wall & Corner Guards	Doors	Door Frames	Ceiling	Millwork / Casework	Misc/Other	Window Covering
Toilets Single Toilet Restrooms	TLF-11 Daltile Ceramic Floor Tile Style: Porcealto Color: CD 58 Bianco Sardo Size 12"x12" Finish: Matte Grout: Laticrete #27 Hemp <u>Threshold</u> SSM-11 DuPont "Corian" Color: Beach	TLF-12 Porcelain Coved Tile Base Style: Porcealto #S3689T (Matches Bianco Sardo CD-58) Size: 8"w x 6"h Finish: Polished Grout: Laticrete #27 Hemp	TLW-12 Daltile Ceramic Wall Tile Style: Porcealto Color: CD 58 Bianco Sardo Size: 12"x12" Finish: Polished Grout:Laticrete #27 Hemp	N/A	PL-38 Nevamar Tangier Anigre WA-0002E	PT-56 Benjamin Moore Pismo Dunes AC-32 SemiGloss	ACT-2 Armstrong Cortega 770 Color: White 2'x2'x5/8" Square Edge lay-in tiles		N/A	N/A
Toilets Staff	TLF-11 Daltile Ceramic Floor Tile Style: Porcealto Color: CD 58 Bianco Sardo Size 12"x12" Finish: Matte Grout: Laticrete #27 Hemp <u>Threshold</u> SSM-11 DuPont "Corian" Color: Beach	TLF-12 Porcelain Coved Tile Base Style: Porcealto #S3689T (Matches Bianco Sardo CD-58) Size: 8"w x 6"h Finish: Polished Grout: Laticrete #27 Hemp	TLW-12 Daltile Ceramic Wall Tile Style: Porcealto Color: CD 58 Bianco Sardo Size: 12"x12" Finish: Polished Grout:Laticrete #27 Hemp	N/A	PL-38 Nevamar Tangier Anigre WA-0002E	PT-56 Benjamin Moore Pismo Dunes AC-32 SemiGloss	ACT-2 Armstrong Cortega 770 Color: White 2'x2'x5/8" Square Edge lay-in tiles	N/A	N/A	N/A
Utility Rooms Clean & Soiled	SHV-2 Armstrong Medintech Freesia Pearl # 86485 WR-2 Armstrong Freesia Pearl # 96485	<u>Clean Utility Rooms</u> RB-15 Roppe 4" Resilient Coved Base Color: #140-TS Fawn <u>Historical</u> RB-6 Johnsonite Resilient Base Style: 4" Cove Base Color: 80 Fawn <u>Integral Base at Soiled Utility Rooms</u> SHV-2 Armstrong Medintech Freesia Pearl # 86485	PT-55 Benjamin Moore Brandy Cream OC-4 Finish: Satin	N/A	PL-38 Nevamar Tangier Anigre WA-0002E	PT-56 Benjamin Moore Pismo Dunes AC-32 SemiGloss	<u>Clean Utility Rooms</u> ACT-2 Armstrong Cortega 770 Color: White 2'x2'x5/8" Square Edge lay-in tiles <u>Painted Gypboard at Soiled Utility Rooms</u> PT-79 Benjamin Moore Interior Ready Mix White	N/A	N/A	N/A
Vending Area Level 2	VCT-24 Mannington "Essentials" #137 Sandrift 12"x12" Install ties in one direction <u>Historical</u> VCT-15 Mannington "Inspirations" #417 Cream Tones 12"x12" To be used w/ FT-5	RB-15 Roppe 4" Resilient Coved Base Color: #140-TS Fawn <u>Historical</u> RB-6 Johnsonite Resilient Base Style: 4" Cove Base Color: 80 Fawn	PT-55 Benjamin Moore Brandy Cream OC-4 Finish: Satin <u>Accent Paint</u> PT-67 Benjamin Moore Golden Tan # 2152-40	N/A	PL-38 Nevamar Tangier Anigre WA-0002E	PT-56 Benjamin Moore Pismo Dunes AC-32 SemiGloss		PL-38 Nevamar Tangier Anigre WA-0002E PL-37 Wilsonart Burnished Spruce # 4797-60 <u>Accents</u> PL-86 Formica Brushed Pewter #2032		



FACILITIES
MANAGEMENT
OFFICE OF
FACILITIES PLANNING,
DESIGN AND
CONSTRUCTION

INTERIOR FINISH STANDARDS
FOR

1220 Holcombe Blvd
Mays Clinic
(ACB)

SHEET TITLE:

ACB
FINISH SCHEDULE
15/17

LAST UPDATE:

01/05/2016

SHEET NO.:

16 OF 42

Interior Finish Standards
Mays Clinic Bldg (ACB)

1220 Holcombe
 Updated : 04/16/2015 (LCT)

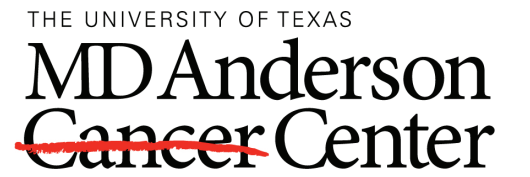
This schedule is intended to convey the general MDACC "standard" products used in the indicated room types to assist with the **Design Development phase only** of renovation or new construction projects.
 Finish legends and room finish schedules for construction documents **MUST** be reviewed and approved by the MDACC Planner/Designer assigned to the project.
 All Planner/Designers are responsible for verifying the information herein for accuracy.
 Contact Facilities Planning, Design and Construction/Facilities Planning Services (FPS) at ext. 2-2207 to clarify "special" finishes and applications.

02/16/2015, per Denise Hanley the following paint spec is used throughout Mays on walls: Corotech water based single phase epoxy, eggshell finish.

Room Type	Flooring	Base	Walls (see note about wall finish above)	Wall & Corner Guards	Doors	Door Frames	Ceiling	Millwork / Casework	Misc/Other	Window Covering
-----------	----------	------	---	----------------------	-------	-------------	---------	---------------------	------------	-----------------

Waiting Rooms Level 1 Public Waiting Areas	CPT-100 Tandus Flooring Liana 04164 Color: Branch 13215 24" x 24" Must install monolithic <i>Historical</i> CPT-44 Interface Route 66 II #16744- Color: Holbrook #5194 Color: #2493 <i>Public Areas off of Waiting</i> CPT-39 Interface Southern Plains #2844 Grassland	RB-15 Roppe 4" Resilient Coved Base Color: #140-TS Fawn <i>Historical</i> RB-6 Johnsonite Resilient Base Style: 4" Cove Base Color: 80 Fawn	PT-55 Benjamin Moore Brandy Cream OC-4 Finish: Satin <i>Waiting Areas on ALL Floors</i> VWC-22 Maharam Style: Honor Weave 395510 Color: 012 Flax Description: 21 oz Type II Vinyl Wall Covering		PL-38 Nevamar Tangier Anigre WA-0002E	PT-56 Benjamin Moore Pismo Dunes AC-32 SemiGloss	ACT-2 Armstrong Cortega 770 Color: White 2'x2'x5/8" Square Edge lay-in tiles	<i>Vertical Surfaces</i> PL-38 Nevamar Tangier Anigre WA-0002E <i>Vertical Accents</i> PL-40 Wilsonart Golden Anigre #10768-60 <i>Transaction & Accents</i> SSM-9 Dupont "Corian" Evergreen <i>Work Surface</i> SSM-10 Dupont "Corian" Abalone	<i>Specialty Glass</i> Color: Frosted 1/4" Tempered Laminated	
--	--	--	---	--	---	---	--	---	---	--

Waiting Rooms Upper Levels Public Waiting Areas	CPT-100 Tandus Flooring Liana 04164 Color: Branch 13215 24" x 24" Must install monolithic <i>Historical</i> CPT-44 Interface Route 66 II #16744- Color: Holbrook #5194 Color: #2493 <i>Public Areas off of Waiting</i> CPT-39 Interface Southern Plains #2844 Grassland	RB-15 Roppe 4" Resilient Coved Base Color: #140-TS Fawn <i>Historical</i> RB-6 Johnsonite Resilient Base Style: 4" Cove Base Color: 80 Fawn	PT-55 Benjamin Moore Brandy Cream OC-4 Finish: Satin <i>Waiting Areas on ALL Floors</i> VWC-22 Maharam Style: Honor Weave 395510 Color: 012 Flax Description: 21 oz Type II Vinyl Wall Covering <i>Accent Walls</i> PT-57 Benjamin Moore # 691 Dartmouth Green PT-60 Benjamin Moore # 720 Bella Blue PT-63 Benjamin Moore # 1413 Purple Haze <i>Wall behind Bubble Columns</i> Levels 4 - 7 VWC-24 Tri-kes Style: Symphony Staccato AZ50743ST Color: Chiton Description: 54"W, 20 oz. Type II Vinyl Wall Covering	<i>When Used Against</i> VWC-22 <i>Mnfctr: Pawling</i> Style: Color: Matches Acrovyn #187 Tanbark	PL-38 Nevamar Tangier Anigre WA-0002E PT-56 Benjamin Moore Pismo Dunes AC-32 SemiGloss	PT-56 Benjamin Moore Pismo Dunes AC-32 SemiGloss	ACT-9 Decoustics Custom Finish: White Claro finish on Ceiling System ACT-2 Armstrong Cortega 770 Color: White 2'x2'x5/8" Square Edge lay-in tiles <i>Painted Gypboard</i> PT-79 Benjamin Moore Interior Ready Mix White	<i>Vertical Surfaces</i> PL-38 Nevamar Tangier Anigre WA-0002E <i>Vertical Accents</i> PL-40 Wilsonart Golden Anigre #10768-60 <i>Base, Transaction & Accents</i> SSM-9 Dupont "Corian" Evergreen <i>Work Surface</i> SSM-10 Dupont "Corian" Abalone <i>Coffee Bars in Upper Floor Waiting Areas</i> SSM-12 DuPont "Corian" Color: Tumbled Glass Description: Neutral Background with Colored Specs	GL-2 Sumiglass Product: FT200 Color: Original Fiber Dimensions: 1/4" Tempered Safety Glass	WS-4 Thermoveil Dense Basketweave 1300 Series Eggshell # 1316
---	--	--	--	--	--	---	---	--	--	---



FACILITIES
 MANAGEMENT
 OFFICE OF
 FACILITIES PLANNING,
 DESIGN AND
 CONSTRUCTION

INTERIOR FINISH STANDARDS
 FOR
 1220 Holcombe Blvd
Mays Clinic
 (ACB)

SHEET TITLE:

ACB
 FINISH SCHEDULE
 16/17

LAST UPDATE:

01/05/2016

SHEET NO.:

17 OF 42

PRINT

BACK TO
 T.O.C.

NEXT PAGE

FACILITIES
MANAGEMENT
OFFICE OF

FACILITIES PLANNING,
DESIGN AND
CONSTRUCTION

INTERIOR FINISH STANDARDS
FOR

1220 Holcombe Blvd

Mays Clinic

(ACB)

SHEET TITLE:

ACB
FINISH SCHEDULE
17/17

LAST UPDATE:

01/05/2016

SHEET NO.:

18 OF 42

PAGE LEFT BLANK

PRINT

BACK TO
T.O.C.

NEXT PAGE

FINISH LEGEND

CEILING

ACT-2 Armstrong
 No.: 770, Cortega
 Color: White
 Finish: Medium Texture
 Size: 2'x2'x5/8"

DOORS/ FRAMES

PL-38 Nevamar
 No. WA-0002E, Tangier Anigre

PT-56 Benjamin Moore
 Color: AC-32, Pismo Dunes
 Finish: Semi-Gross

WALLS

PT-55 Benjamin Moore (Field)
 Color: OC-4, Brandy Cream
 Finish: Satin

FWC-4 Maharam
 Pattern: Parallel
 Color: Argent #002

FLOORS/ BASE

CPT-43 Shaw
 Style: Paparazzi
 Color: ZsaZsa #20761

RB-6 Johnsonite, 4" Coved
 Color: 80, Fawn

ARCHITECTURAL WOODWORK

PL-40 Wilsonart
 Color: Golden Anigre

PL-22 Nevamar
 Color: Cognac Birdseye

SSM-9 Dupont "Corian"
 Color: Evergreen

Important Disclaimer: Colors presented in this file are provided for general color information only. Due to many different monitor settings on individual computers and different light sources - these finishes may appear from actual color. Actual samples are available from the FPDC/FPS library located on the 8th floor of FHB or may be ordered directly from manufacturers.



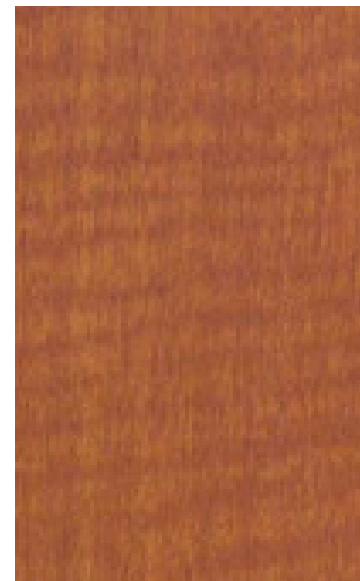
ACT-2



FWC-4



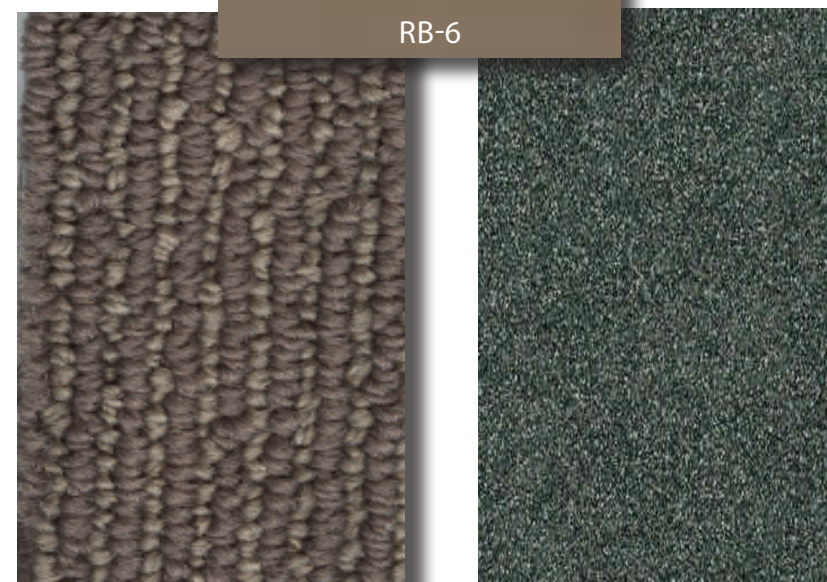
PT-55



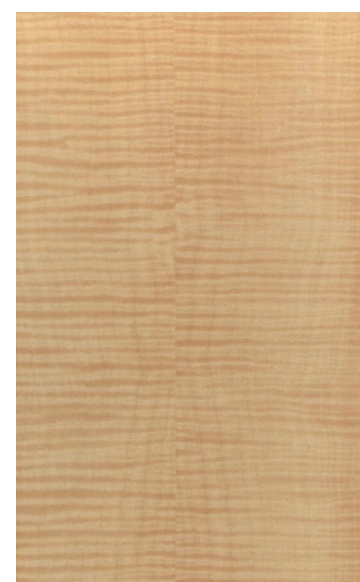
PL-38



PT-56



RB-6



PL-40



PL-22

CPT-43

SSM-9

SHEET TITLE:

ACB
 APPEARANCE CENTER

LAST UPDATE:

01/05/2016

SHEET NO.:

19 OF 42

PRINT

BACK TO
 T.O.C.

NEXT PAGE

FINISH LEGEND

CEILING

ACT-2 Armstrong
 No.: 770, Cortega
 Color: White
 Finish: Medium Texture
 Size: 2'x2'x5/8"

DOORS/ FRAMES

PL-38 Nevamar
 No. WA-0002E, Tangier Anigre

PT-56 Benjamin Moore
 Color: AC-32, Pismo Dunes
 Finish: Semi-Gross

WALLS

PT-55 Benjamin Moore (Field)
 Color: OC-4, Brandy Cream
 Finish: Satin

FLOORS/ BASE

SHV-2 Armstrong
 Style: "Medintech"
 Color: 86485 Freesia Pearl

WR-2 Armstrong (Welding Rod)
 Pattern: Medintech
 Color: 96485, Freesia Pearl

CPT-39 Interface
 Style: Southern Plains
 Color: 2844 Grassland

RB-6 Johnsonite, 4" Coved
 Color: 80, Fawn

ARCHITECTURAL WOODWORK

PL-38 Nevamar (Vertical Surfaces)
 No.: WA-0002E Tangier Anigre

PL-37 Wilsonart (Horizontal Surfaces)
 No.: 4797-60, Burnished Spruce

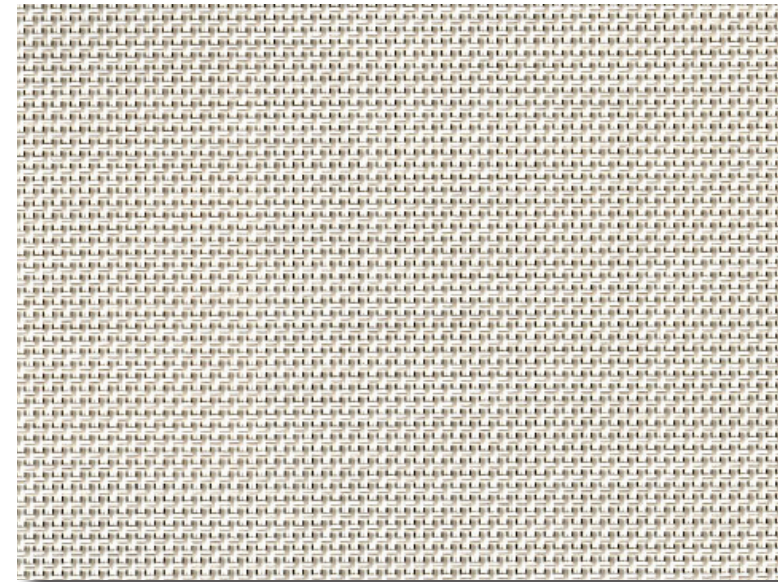
WINDOW TREATMENTS

WS-4 Mechoshade, Thermovail
 1300 Series, Dense Basketweave
 Color: 1316, Eggshell

Important Disclaimer: Colors presented in this file are provided for general color information only. Due to many different monitor settings on individual computers and different light sources - these finishes may appear from actual color. Actual samples are available from the FPDC/FPS library located on the 8th floor of FHB or may be ordered directly from manufacturers.



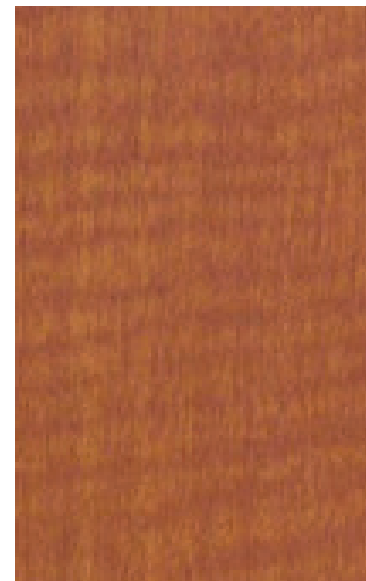
ACT-2



WS-4



PT-55



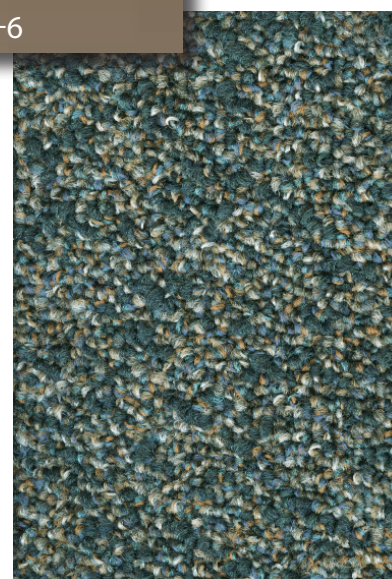
PL-38



PT-56



SHV-2/WR-2



CPT-39



PL-37



PL-38

SHEET TITLE:

ACB
 BREAK ROOMS OR
 WORK ROOMS

LAST UPDATE:

01/05/2016

SHEET NO.:

20 OF 42

PRINT

BACK TO
 T.O.C.

NEXT PAGE

FINISH LEGEND

CEILING

ACT-2 Armstrong
No.: 770, Cortega
Color: White
Finish: Medium Texture
Size: 2'x2'x5/8"

DOORS/ FRAMES

PT-56 Benjamin Moore
Color: AC-32, Pismo Dunes
Finish: Semi-Gloss

WALLS

PT-55 Benjamin Moore (Field)
Color: OC-4, Brandy Cream
Finish: Satin

FLOORS/ BASE

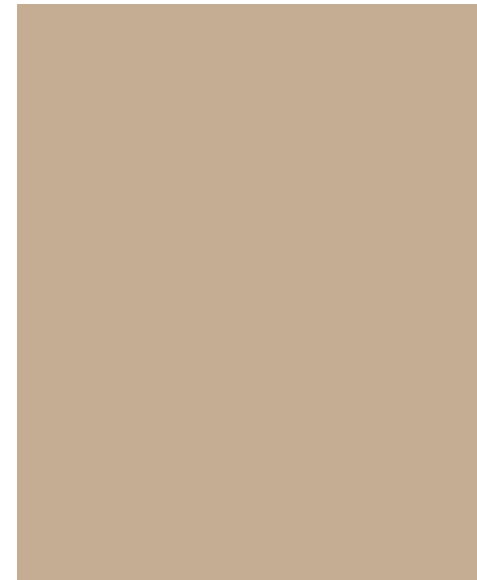
CPT-37 Lees "Heartland", 18"x18" Tile
No.: D8442
Color: 307, Capri
RB-6 Johnsonite, 4" Coved
Color: 80, Fawn



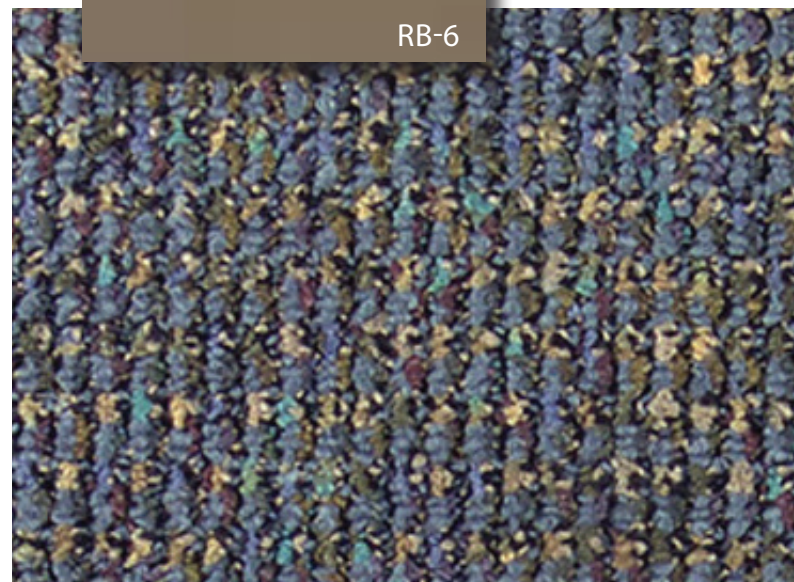
ACT-2



PT-56



PT-55



CPT-37

Important Disclaimer: Colors presented in this file are provided for general color information only. Due to many different monitor settings on individual computers and different light sources - these finishes may appear from actual color. Actual samples are available from the FPDC/FPS library located on the 8th floor of FHB or may be ordered directly from manufacturers.

FACILITIES MANAGEMENT OFFICE OF

FACILITIES PLANNING,
DESIGN AND
CONSTRUCTION

INTERIOR FINISH STANDARDS FOR

1220 Holcombe Blvd
Mays Clinic
(ACB)

SHEET TITLE:

ACB
BRIDGE TO CPB
(LEVELS 3-7)

LAST UPDATE:

01/05/2016

SHEET NO.:

21 OF 42

PRINT

BACK TO
T.O.C.

NEXT PAGE

FINISH LEGEND

CEILING

ACT-2 Armstrong
No.: 770, Cortega
Color: White
Finish: Medium Texture
Size: 2'x2'x5/8"

DOORS/ FRAMES

PT-56 Benjamin Moore
Color: AC-32, Pismo Dunes
Finish: Semi-Gloss

WALLS

PT-55 Benjamin Moore (Field)
Color: OC-4, Brandy Cream
Finish: Satin

FLOORS/ BASE

CPT-34 Interface
Pattern: Nature Trails
Custom Color: 176614 (Custom)

RB-5 Roppe, 4" Coved
Color: RP100 Black



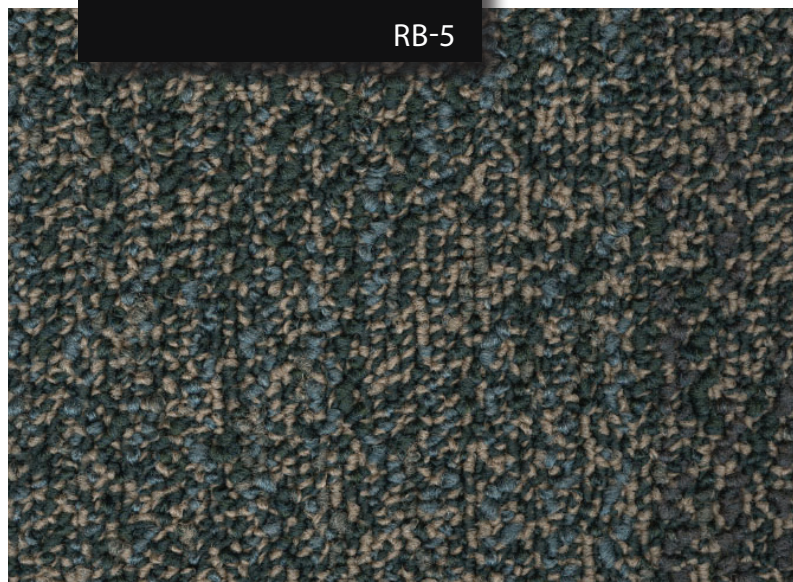
ACT-2



PT-55



PT-56



RB-5

CPT-34

Important Disclaimer: Colors presented in this file are provided for general color information only. Due to many different monitor settings on individual computers and different light sources - these finishes may appear from actual color. Actual samples are available from the FPDC/FPS library located on the 8th floor of FHB or may be ordered directly from manufacturers.

FACILITIES MANAGEMENT OFFICE OF

FACILITIES PLANNING,
DESIGN AND
CONSTRUCTION

INTERIOR FINISH STANDARDS FOR

1220 Holcombe Blvd
Mays Clinic
(ACB)

SHEET TITLE:

ACB
BRIDGE TO CPB
(LEVEL 8)

LAST UPDATE:

01/05/2016

SHEET NO.:

22 OF 42

PRINT

BACK TO
T.O.C.

NEXT PAGE

FINISH LEGEND

CEILING

ACT-2 Armstrong
No.: 770, Cortega
Color: White
Finish: Medium Texture
Size: 2'x2'x5/8"

DOORS/ FRAMES

PL-38 Nevamar
No. WA-0002E, Tangier Anigre

PT-56 Benjamin Moore
Color: AC-32, Pismo Dunes
Finish: Semi-Gloss

PT-55 Benjamin Moore
Color: OC-4, Brandy Cream
Finish: Satin

WALLS

PT-55 Benjamin Moore (Field)
Color: OC-4, Brandy Cream
Finish: Satin

FLOORS/ BASE

CPT-34 Interface
Pattern: Nature Trails
Custom Color: 176614 (Custom)

RB-6 Johnsonite, 4" Coved
Color: 80, Fawn

ARCHITECTURAL WOODWORK

PL-37 Wilsonart (Horizontal Surfaces)
No.: 4797-60, Burnished Spruce

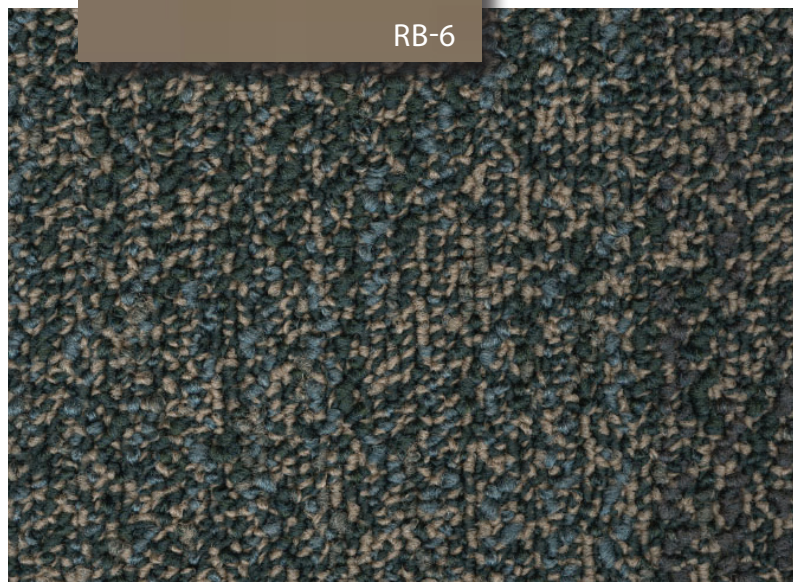
Important Disclaimer: Colors presented in this file are provided for general color information only. Due to many different monitor settings on individual computers and different light sources - these finishes may appear from actual color. Actual samples are available from the FPDC/FPS library located on the 8th floor of FHB or may be ordered directly from manufacturers.



ACT-2



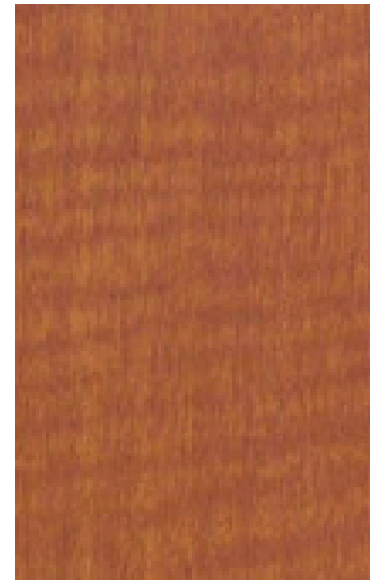
PT-55



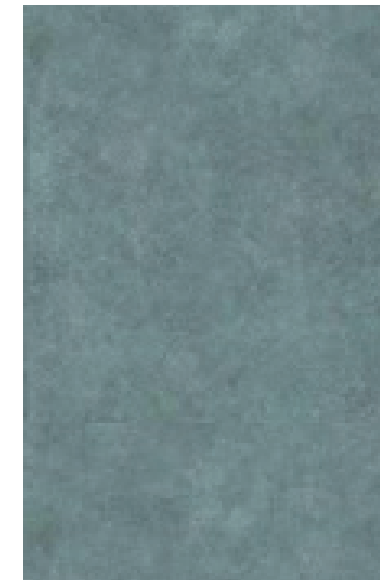
CPT-34



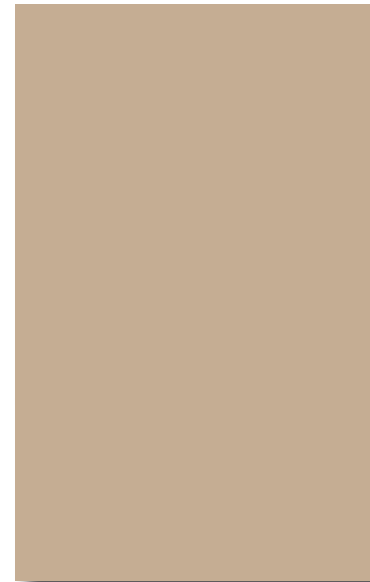
RB-6



PL-38



PL-37



PT-56

FACILITIES MANAGEMENT OFFICE OF

FACILITIES PLANNING,
DESIGN AND
CONSTRUCTION

INTERIOR FINISH STANDARDS FOR

1220 Holcombe Blvd
Mays Clinic
(ACB)

SHEET TITLE:

ACB BRIDGE TO PRESSLER GARAGE

LAST UPDATE:

01/05/2016

SHEET NO.:

23 OF 42

PRINT

BACK TO
T.O.C.

NEXT PAGE

FINISH LEGEND

CEILING

ACT-2 Armstrong
 No.: 770, Cortega
 Color: White
 Finish: Medium Texture
 Size: 2'x2'x5/8"

DOORS/ FRAMES

Wood to match:
 PL-38 Nevamar
 No. WA-0002E, Tangier Anigre

PT-56 Benjamin Moore
 Color: AC-32, Pismo Dunes
 Finish: Semi-Gloss

WALLS

PT-55 Benjamin Moore (Field)
 Color: OC-4, Brandy Cream
 Finish: Satin

FWC-6 Maharam
 Pattern: Parallel
 Color: Fog # 003

VWC-25 Anya Larkin Ltd.
 Pattern: Opaline Leaf Paper
 Color: 2505 Amber

FLOORS/ BASE

CPT-43 Shaw
 Style: Paparazzi
 Color: ZsaZsa #20761

PT-73 Benjamin Moore Semi Gloss
 Color: 2141-50 Horizon Grey

WINDOW TREATMENTS

WS-4 Mechoshade, Thermovail
 1300 Series, Dense Basketweave
 Color: 1316, Eggshell

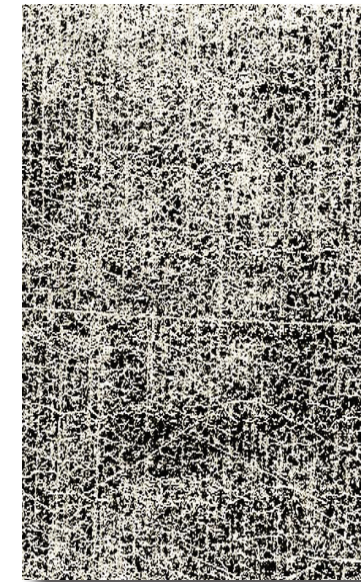
Important Disclaimer: Colors presented in this file are provided for general color information only. Due to many different monitor settings on individual computers and different light sources - these finishes may appear from actual color. Actual samples are available from the FPDC/FPS library located on the 8th floor of FHB or may be ordered directly from manufacturers.



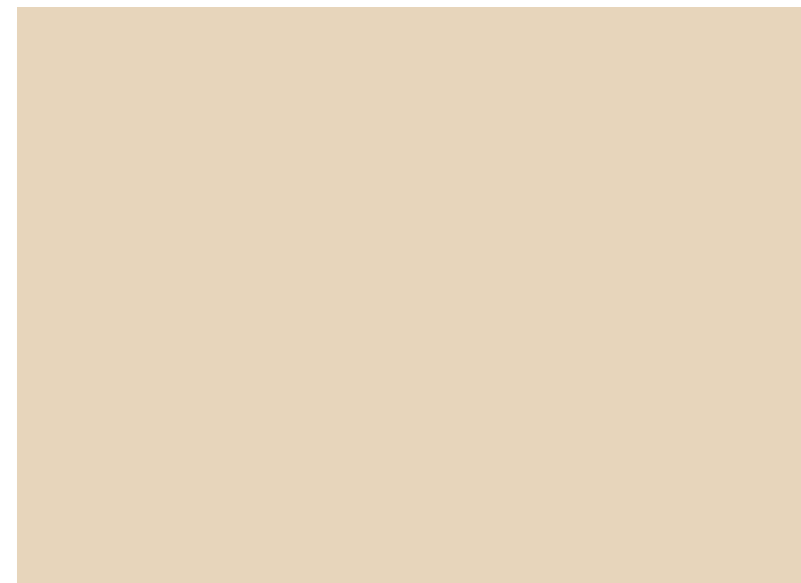
ACT-2



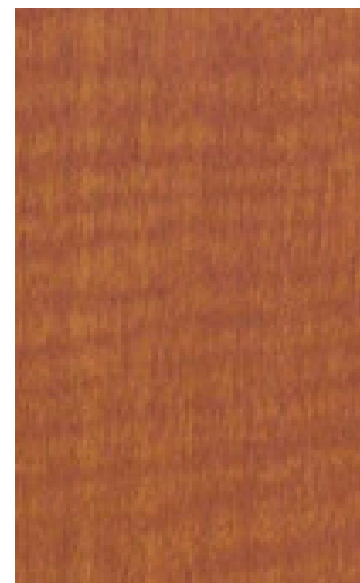
FWC-6



VWC-25



PT-55



WOOD TO MATCH PL-38



PT-56



CPT-43



PT-73



WS-4

SHEET TITLE:

ACB
 CHAPEL

LAST UPDATE:

01/05/2016

SHEET NO.:

24 OF 42

PRINT

BACK TO
 T.O.C.

NEXT PAGE

FINISH LEGEND

CEILING

ACT-2 Armstrong
 No.: 770, Cortega
 Color: White
 Finish: Medium Texture
 Size: 2'x2'x5/8"

DOORS/FRAMES

PL-38 Nevamar
 No.: WA-0002E, Tangier Anigre
 PT-56 Benjamin Moore
 Color: AC-32, Pismo Dunes
 Finish: Semi-Gloss

WALLS

PT-55 Benjamin Moore
 Color: OC-4, Brandy Cream
 Finish: Satin

MOVEABLE WALLS

FWC-11 Wolf Gordon
 Pattern: Custom WG3584686
 Color: Custom 031104-06

FLOORS/BASE

CPT-39 Interface
 Style: Southern Plains
 Color: 2844 Grassland
 RB-6 Johnsonite, 4" Cove
 Color: 80, Fawn

ARCHITECTURAL WOODWORK

PL-38 Nevamar
 No.: WA-0002E, Tangier Anigre

WINDOW TREATMENTS

WS-4 MeccoShade, Thermoveil
 Pattern: 1300 Series, Dense Basketweave
 Color: 1316, Eggshell

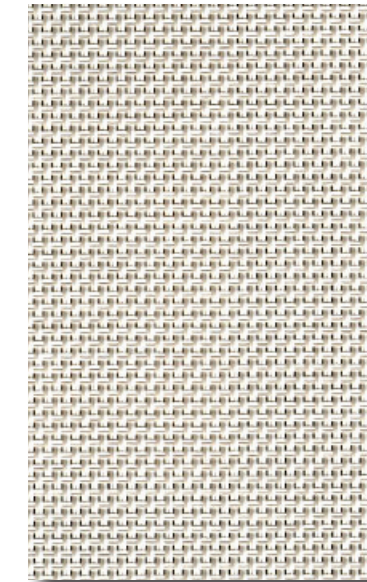
Important Disclaimer: Colors presented in this file are provided for general color information only. Due to many different monitor settings on individual computers and different light sources - these finishes may appear from actual color. Actual samples are available from the FPDC/FPS library located on the 8th floor of FHB or may be ordered directly from manufacturers.



ACT-2



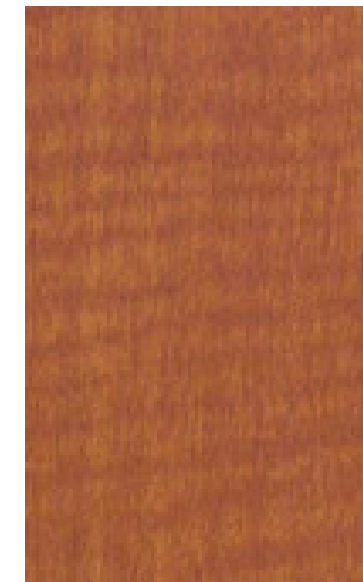
PT-56



WS-4



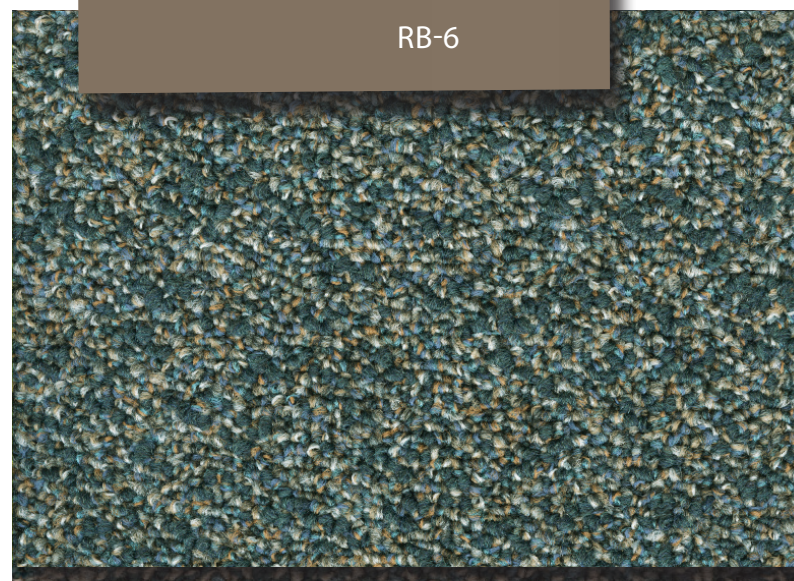
PT-55



PL-38



FWC-11



RB-6

CPT-39

SHEET TITLE:

ACB
 CONFERENCE ROOMS
 (LEVELS 4-8)

LAST UPDATE:

01/05/2016

SHEET NO.:

25 OF 42

PRINT

BACK TO
 T.O.C.

NEXT PAGE

FINISH LEGEND

CEILING

ACT-2 Armstrong
 No.: 770, Cortega
 Color: White
 Finish: Medium Texture
 Size: 2'x2'x5/8"

WALLS

VWC-21 Maharam
 Pattern: "Lush"
 Color: Tourmaline #12

VWC-23 Maharam
 Pattern: "Lush"
 Color: Whimsy #10

DOORS/FRAMES

PL-38 Nevamar
 No.: WA-0002E, Tangier Anigre

PT-56 Benjamin Moore
 Color: AC-32, Pismo Dunes
 Finish: Semi-Gloss

PT-16 Benjamin Moore
 Color: Cinnamon Stick
 Finish:

FLOORS/BASE

SHV-2 Armstrong
 Pattern: Medintech
 Color: 86485, Freesia Pearl

WR-2 Armstrong (Welding Rod)
 Pattern: Medintech
 Color: 96485, Freesia Pearl

SHV-23 Armstrong
 Pattern: Medintech
 Color: 86492 Viburnam Green

WR-3 Armstrong (Welding Rod)
 Pattern: Medintech
 Color: 96492, Viburnam Green

RB-6 Johnsonite, 4" Cove
 Color: 80, Fawn

ARCHITECTURAL WOODWORK

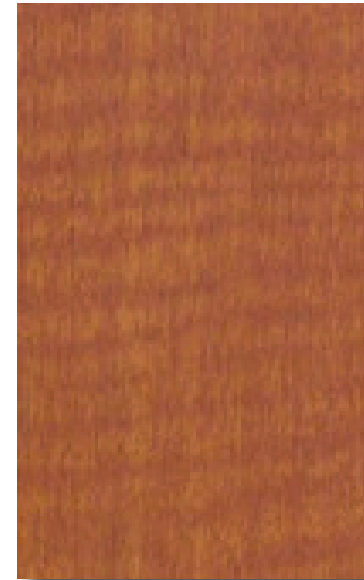
PL-38 Nevamar
 No.: WA-0002E, Tangier Anigre

PL-37 Wilsonart (Horizontal Surfaces)
 No.: 4797-60, Burnished
 Spruce

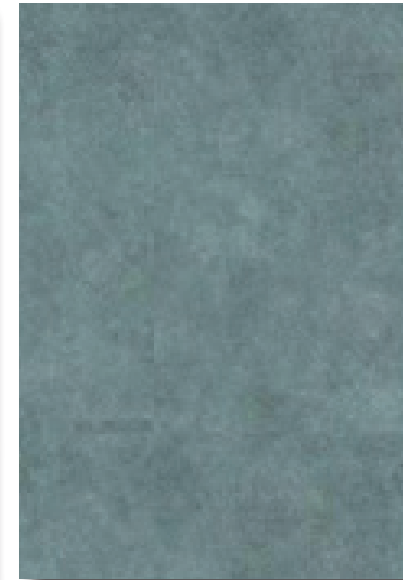
Important Disclaimer: Colors presented in this file are provided for general color information only. Due to many different monitor settings on individual computers and different light sources - these finishes may appear from actual color. Actual samples are available from the FPDC/FPS library located on the 8th floor of FHB or may be ordered directly from manufacturers.



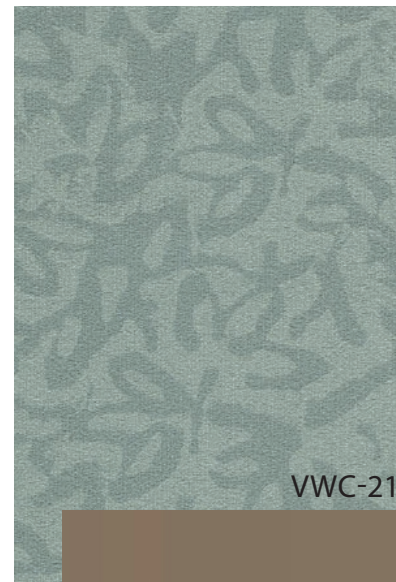
ACT-2



PL-38



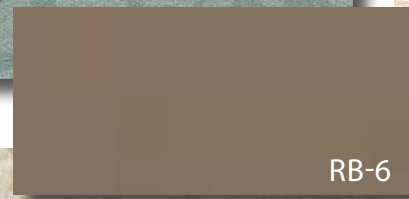
PL-37



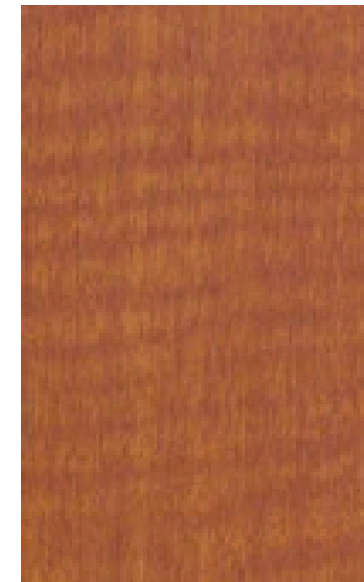
VWC-21



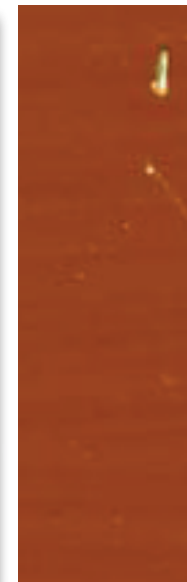
VWC-23



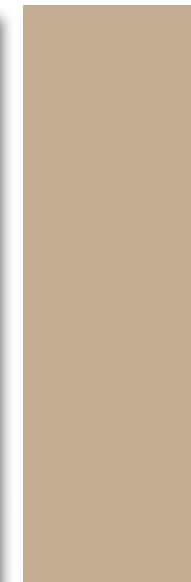
RB-6



PL-38



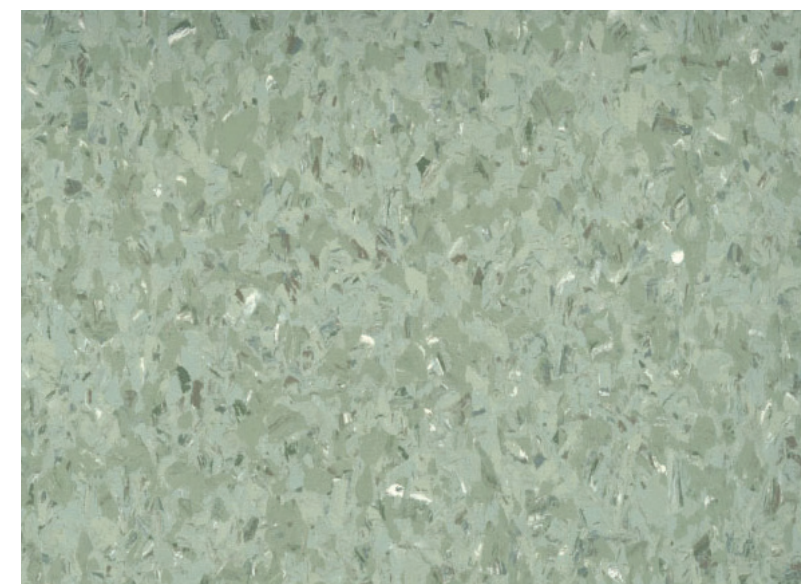
PT-16



PT-56



SHV-2 / WR-2



SHV-23 / WR-3

SHEET TITLE:

ACB
 CORRIDORS
 (CLINIC AREAS)

LAST UPDATE:

01/05/2016

SHEET NO.:

26 OF 42

PRINT

BACK TO
 T.O.C.

NEXT PAGE

FINISH LEGEND

CEILING

ACT-2 Armstrong
 No.: 770, Cortega
 Color: White
 Finish: Medium Texture
 Size: 2'x2'x5/8"

DOORS/FRAMES

PL-38 Nevamar
 No.: WA-0002E, Tangier Anigre
 PT-56 Benjamin Moore
 Color: AC-32, Pismo Dunes
 Finish: Semi-Gloss

WALLS

PT-55 Benjamin Moore
 Color: OC-4, Brandy Cream
 Finish: Satin

FLOORS/BASE

CPT-34 Interface
 Pattern: Nature Trails
 Custom Color: 176614
 STW-4 National Tile & Terrazo
 Color: Heveleun Green Marble
 Size: 18" Marble
 STW-5 National Tile & Terrazo
 Color: Heveleun Green Marble
 Size: 6" Marble

ARCHITECTURAL WOODWORK

PL-38 Nevamar
 No.: WA-0002E, Tangier Anigre
 PL-40 Wilson Art
 No.: 10768-60, Golden Anigre
 SSM-9 Dupont "Corian"
 Color: Evergreen
 SSM-10 Dupont "Corian"
 Color: Abalone

WINDOW TREATMENTS

WS-4 MecoShade, Thermoveil
 Pattern: 1300 Series, Dense Basketweave
 Color: 1316, Eggshell

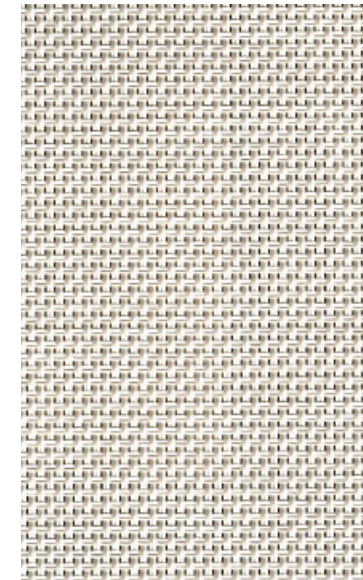
Important Disclaimer: Colors presented in this file are provided for general color information only. Due to many different monitor settings on individual computers and different light sources - these finishes may appear from actual color. Actual samples are available from the FPDC/FPS library located on the 8th floor of FHB or may be ordered directly from manufacturers.



ACT-2



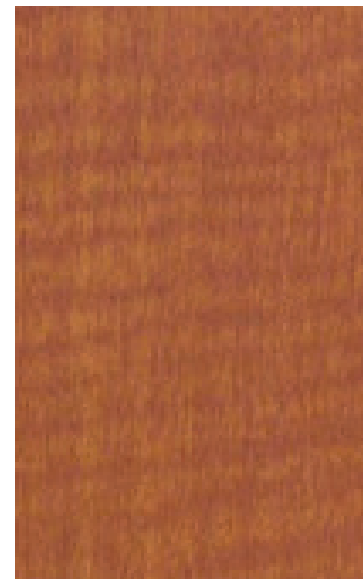
PT-56



WS-4



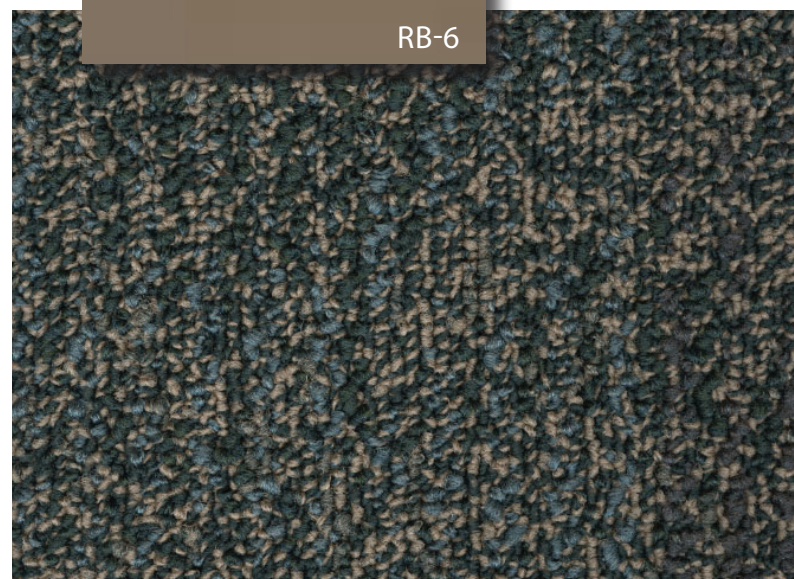
PT-55



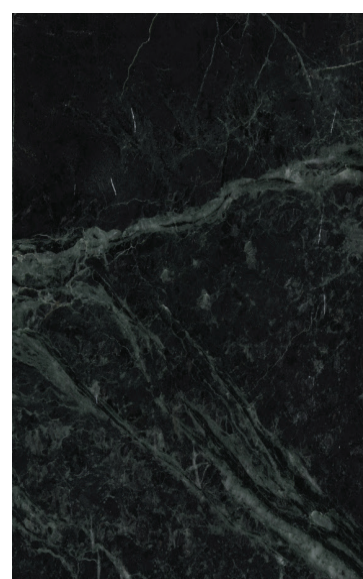
PL-38



SSM-9



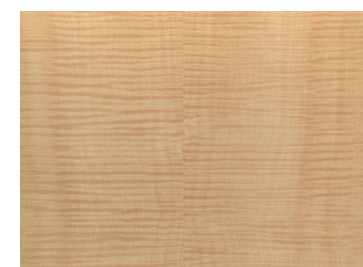
CPT-34



STW-4 STW-5



SSM-10



PL-40

SHEET TITLE:

ACB
 CORRIDORS
 (PUBLIC FLOOR 2)

LAST UPDATE:

01/05/2016

SHEET NO.:

27 OF 42

PRINT

BACK TO
 T.O.C.

NEXT PAGE

FINISH LEGEND

CEILING

ACT-2 Armstrong
 No.: 770, Cortega
 Color: White
 Finish: Medium Texture
 Size: 2'x2'x5/8"

DOORS/ FRAMES

PL-38 Nevamar
 No.: WA-0002E, Tangier Anigre

PT-56 Benjamin Moore
 Color: AC-32, Pismo Dunes
 Finish: Semi-Gloss

PT-16 Benjamin Moore
 Color: MO2-1275 Cinnamon Stick
 Finish: Semi-Gloss

WALLS

PT-55 Benjamin Moore (Field)
 Color: OC-4, Brandy Cream
 Finish: Satin

PT-54 Benjamin Moore (Accent)
 Color: #690, Grenada Villa
 Finish: Satin

PT-59 Benjamin Moore (Accent)
 Color: #719, Hemlock
 Finish: Satin

PT-62 Benjamin Moore (Accent)
 Color: #1412, Central Mauve
 Finish: Satin

FLOORS/ BASE

SHV-2 Armstrong
 Pattern: Medintech
 Color: 86485, Freesia Pearl

WR-2 Armstrong (Welding Rod)
 Pattern: Medintech
 Color: 96485, Freesia Pearl

RB-6 Johnsonite, 4" Coved
 Color: 80, Fawn

WINDOW TREATMENTS

WS-4 MecoShade, Thermoveil
 Pattern: 1300 Series, Dense Basketweave
 Color: 1316, Eggshell

Important Disclaimer: Colors presented in this file are provided for general color information only. Due to many different monitor settings on individual computers and different light sources - these finishes may appear from actual color. Actual samples are available from the FPDC/FPS library located on the 8th floor of FHB or may be ordered directly from manufacturers.



ACT-2



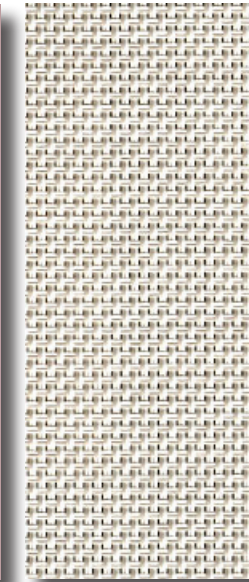
PT-54



PT-59



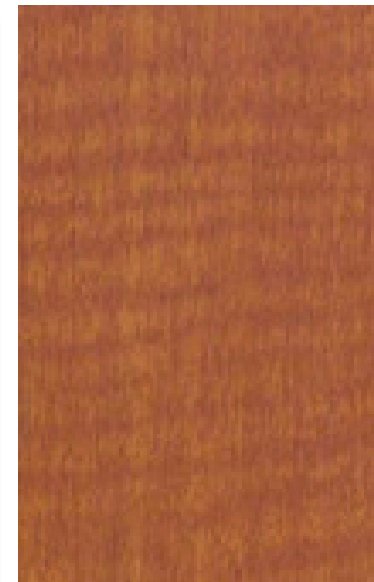
PT-62



WS-4



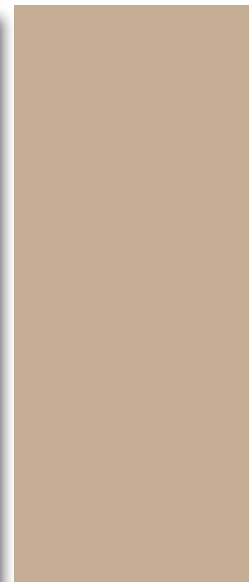
PT-55



PL-38



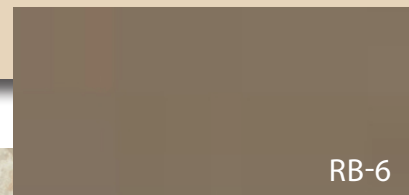
PT-16



PT-56



SHV-2 / WR-2



RB-6

SHEET TITLE:

ACB
 CORRIDORS
 (STAFF)

LAST UPDATE:

01/05/2016

SHEET NO.:

28 OF 42

PRINT

BACK TO
 T.O.C.

NEXT PAGE

FINISH LEGEND

CEILING

ACT-2 Armstrong
No.: 770, Cortega
Color: White
Finish: Medium Texture
Size: 2'x2'x5/8"

ELEVATOR DOORS/ FRAMES

BRUSHED STAINLESS STEEL

WALLS

WOOD VENEER TO MATCH PL-38

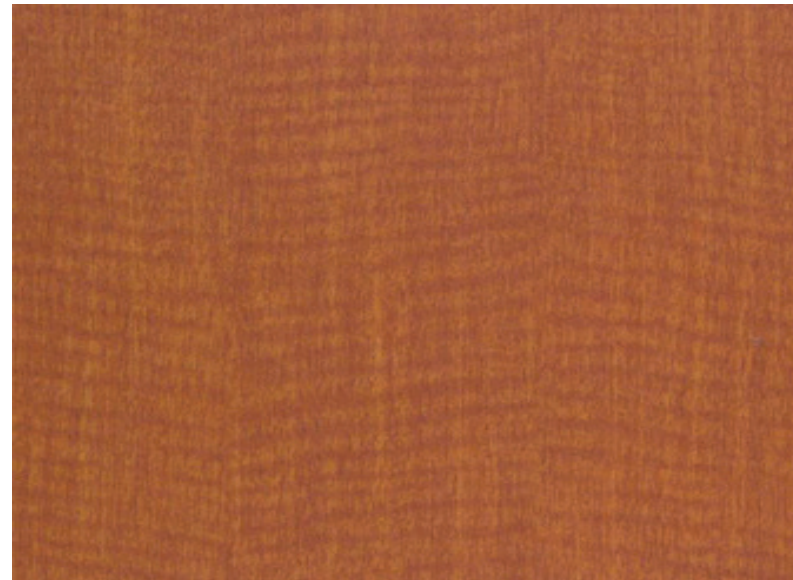
FLOORS/ BASE

CPT-34 Interface
Pattern: Nature Trails
Custom Color: 176614 (Custom)

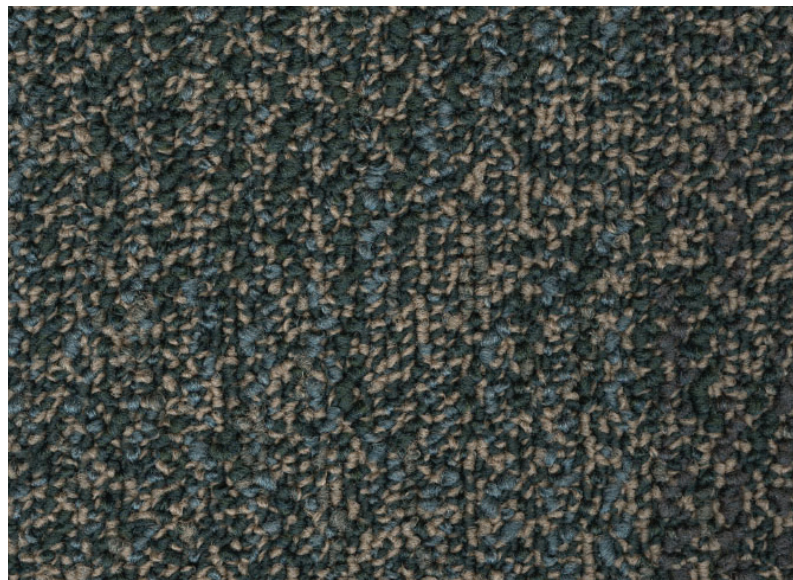
STW-4 National Tile & Terrazo
Color: Heveleun Green Marble
Size: 18" Marble



ACT-2



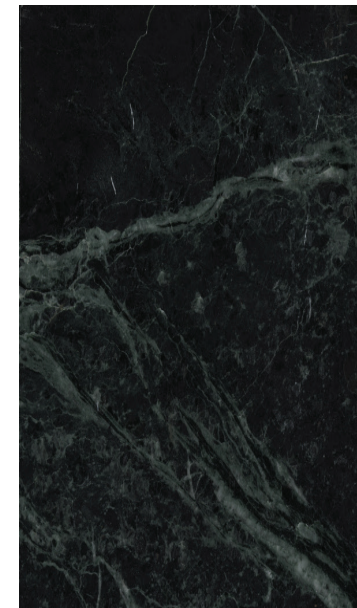
WOOD VENEER TO MATCH PL-38



CPT-34



BRUSHED STAINLESS STEEL



STW-4

FACILITIES MANAGEMENT OFFICE OF

FACILITIES PLANNING,
DESIGN AND
CONSTRUCTION

INTERIOR FINISH STANDARDS FOR

1220 Holcombe Blvd
Mays Clinic
(ACB)

SHEET TITLE:

ACB
ELEVATOR LOBBY
LEVEL 2

LAST UPDATE:

01/05/2016

SHEET NO.:

29 OF 42

Important Disclaimer: Colors presented in this file are provided for general color information only. Due to many different monitor settings on individual computers and different light sources - these finishes may appear from actual color. Actual samples are available from the FPDC/FPS library located on the 8th floor of FHB or may be ordered directly from manufacturers.

PRINT

BACK TO
T.O.C.

NEXT PAGE

FINISH LEGEND

CEILING

ACT-2 Armstrong
No.: 770, Cortega
Color: White
Finish: Medium Texture
Size: 2'x2'x5/8"

ELEVATOR DOORS/ FRAMES

BRUSHED STAINLESS STEEL DOOR

WALLS

PT-55 Benjamin Moore
Color: OC-4, Brandy Cream
Finish: Satin

PL-38 Nevamar
No.: WA-0002E, Tangier Anigre

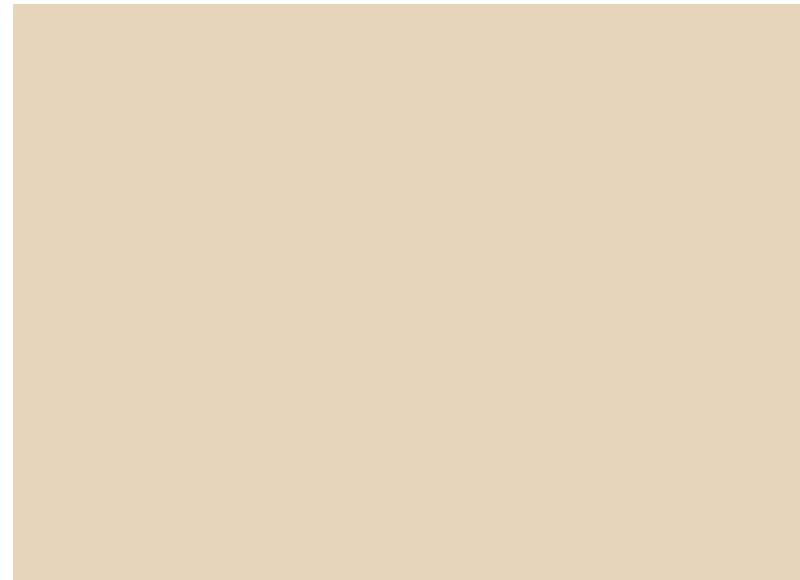
FLOORS/ BASE

CPT-44 Interface
Pattern: Route 66
Color: #5191, Holbrook

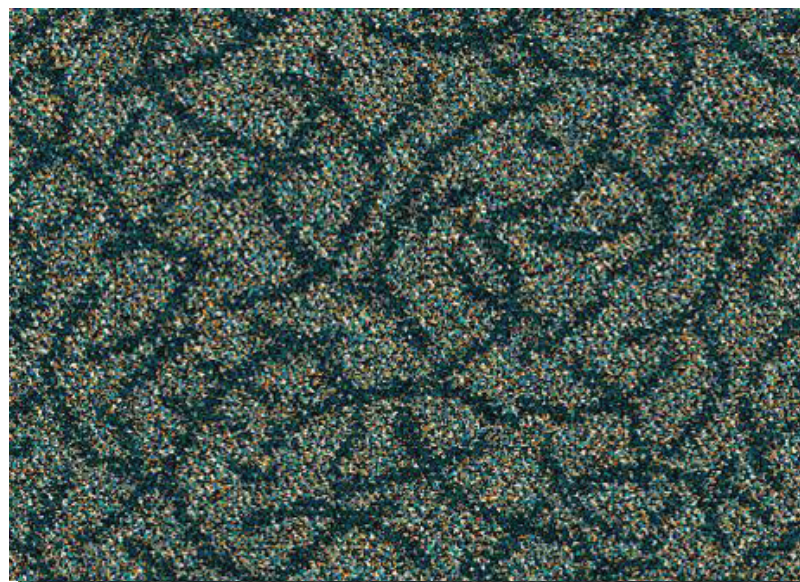
SSM-9 Dupont "Corian"
Color: Evergreen



ACT-2



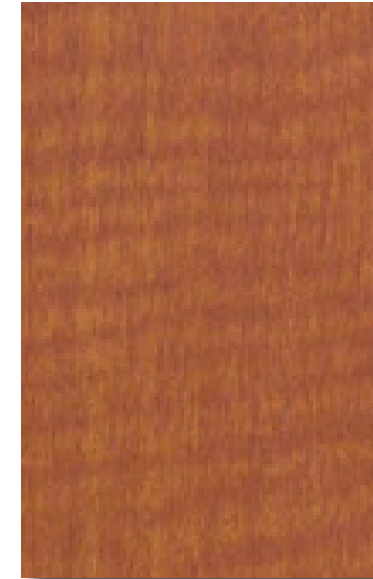
PT-55



CPT-44



SSM-9



PL-38

Important Disclaimer: Colors presented in this file are provided for general color information only. Due to many different monitor settings on individual computers and different light sources - these finishes may appear from actual color. Actual samples are available from the FPDC/FPS library located on the 8th floor of FHB or may be ordered directly from manufacturers.

FACILITIES MANAGEMENT OFFICE OF

FACILITIES PLANNING,
DESIGN AND
CONSTRUCTION

INTERIOR FINISH STANDARDS FOR

1220 Holcombe Blvd
Mays Clinic
(ACB)

SHEET TITLE:

ACB
ELEVATOR LOBBY
(PUBLIC FLRS 3-8)

LAST UPDATE:

01/05/2016

SHEET NO.:

30 OF 42

PRINT

BACK TO
T.O.C.

NEXT PAGE

FINISH LEGEND

CEILING

ACT-2 Armstrong
No.: 770, Cortega
Color: White
Finish: Medium Texture
Size: 2'x2'x5/8"

WALLS

VWC-23 Maharam
Pattern: "Lush"
Color: Whimsy #10

ELEVATOR DOORS/ FRAMES

BRUSHED STAINLESS STEEL DOOR

PT-56 Benjamin Moore
Color: AC-32, Pismo Dunes
Finish: Semi-Gloss

FLOORS/BASE

SHV-2 Armstrong
Pattern: Medintech
Color: 86485, Freesia Pearl

WR-2 Armstrong (Welding Rod)
Pattern: Medintech
Color: 96485, Freesia Pearl

RB-6 Johnsonite, 4" Cove
Color: 80, Fawn



ACT-2



VWC-23



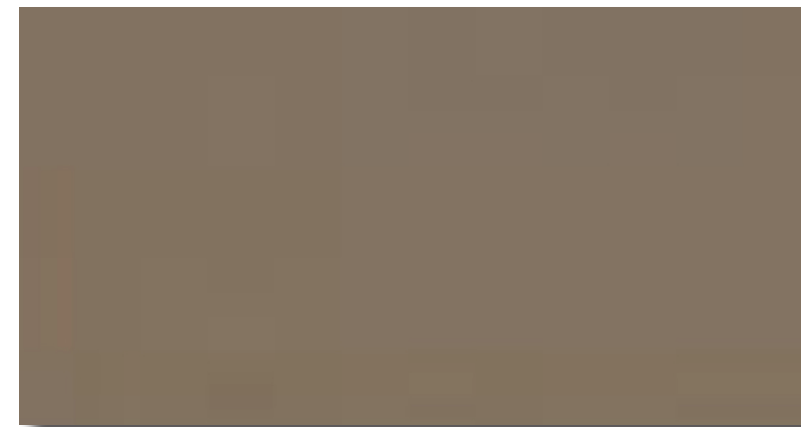
SHV-2 / WR-2



BRUSHED STAINLESS STEEL



PT-56



RB-6

FACILITIES MANAGEMENT OFFICE OF

FACILITIES PLANNING,
DESIGN AND
CONSTRUCTION

INTERIOR FINISH STANDARDS
FOR

1220 Holcombe Blvd
Mays Clinic
(ACB)

SHEET TITLE:

ACB
ELEVATOR LOBBY
(STAFF)

LAST UPDATE:

01/05/2016

SHEET NO.:

31 OF **42**

Important Disclaimer: Colors presented in this file are provided for general color information only. Due to many different monitor settings on individual computers and different light sources - these finishes may appear from actual color. Actual samples are available from the FPDC/FPS library located on the 8th floor of FHB or may be ordered directly from manufacturers.

PRINT

BACK TO
T.O.C.

NEXT PAGE

FINISH LEGEND

CEILING

ACT-2 Armstrong
 No.: 770, Cortega
 Color: White
 Finish: Medium Texture
 Size: 2'x2'x5/8"

DOORS/FRAMES

PL-38 Nevamar
 No.: WA-0002E, Tangier Anigre
 PT-56 Benjamin Moore
 Color: AC-32, Pismo Dunes
 Finish: Semi-Gloss

WALLS

PT-55 Benjamin Moore (Field)
 Color: OC-4, Brandy Cream
 Finish: Satin
 PT-53 Benjamin Moore (Accent)
 Color: BM-689, Rhine River
 PT-58 Benjamin Moore (Accent)
 Color: BM-718, Ocean City Blue
 PT-61 Benjamin Moore (Accent)
 Color: BM-1411, North Cascades

FLOORS/BASE

SHV-2 Armstrong
 Pattern: Medintech
 Color: 86485, Freesia Pearl
 WR-2 Armstrong (Welding Rod)
 Pattern: Medintech
 Color: 96485, Freesia Pearl
 RB-6 Johnsonite, 4"
 Color: 80, Fawn

ARCHITECTURAL WOODWORK

PL-38 Nevamar
 No.: WA-0002E, Tangier Anigre
 SSM-8 Dupont, "Corian"
 Color: Bisque
 SSM-12 Dupont, "Corian"
 Color: Tumbled Glass

Important Disclaimer: Colors presented in this file are provided for general color information only. Due to many different monitor settings on individual computers and different light sources - these finishes may appear from actual color. Actual samples are available from the FPDC/FPS library located on the 8th floor of FHB or may be ordered directly from manufacturers.



ACT-2



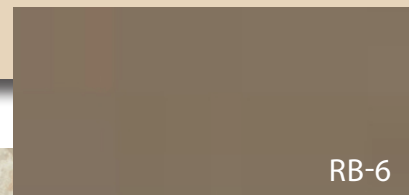
PL-38



PT-56



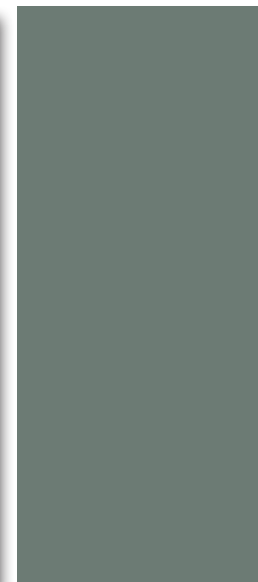
PT-55



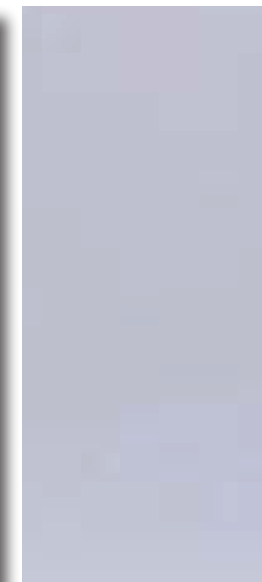
RB-6



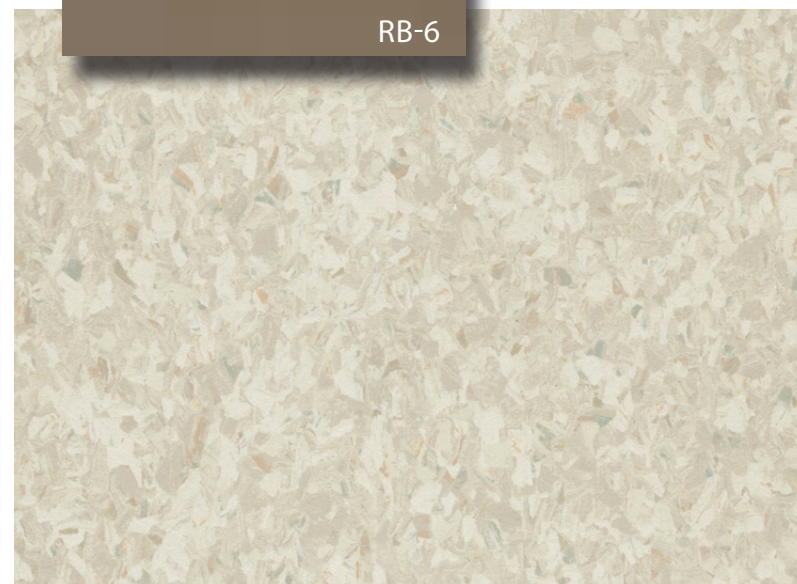
PT-53



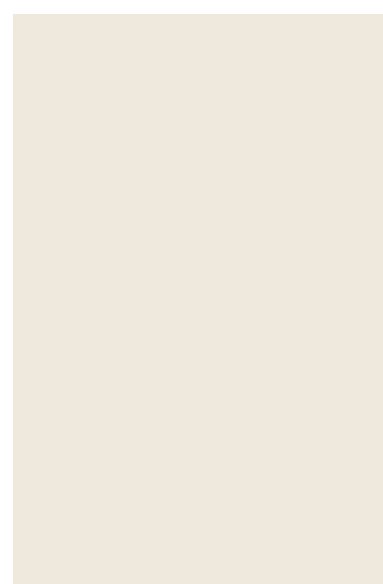
PT-58



PT-61



SHV-2 / WR-2



SSM-8



SSM-12

SHEET TITLE:

ACB
 EXAM ROOMS &
 TREATMENT ROOMS

LAST UPDATE:

01/05/2016

SHEET NO.:

32 OF 42

PRINT

BACK TO
 T.O.C.

NEXT PAGE

FINISH LEGEND

DOOR FRAMES

PT-56 Benjamin Moore
 Color: AC-32, Pismo Dunes
 Finish: Semi-Gloss

WALLS

PT-55 Benjamin Moore (Field)
 Color: OC-4, Brandy Cream
 Finish: Satin

STW-1 National Tile & Terrazo
 Color: Texas Pink Granite
 Finish: Honed

STW-2 National Tile & Terrazo
 Color: Texas Pink Granite
 Finish: Polished

STW-3 National Tile & Terrazo
 Color: Texas Pink Granite
 Finish: Split Faced

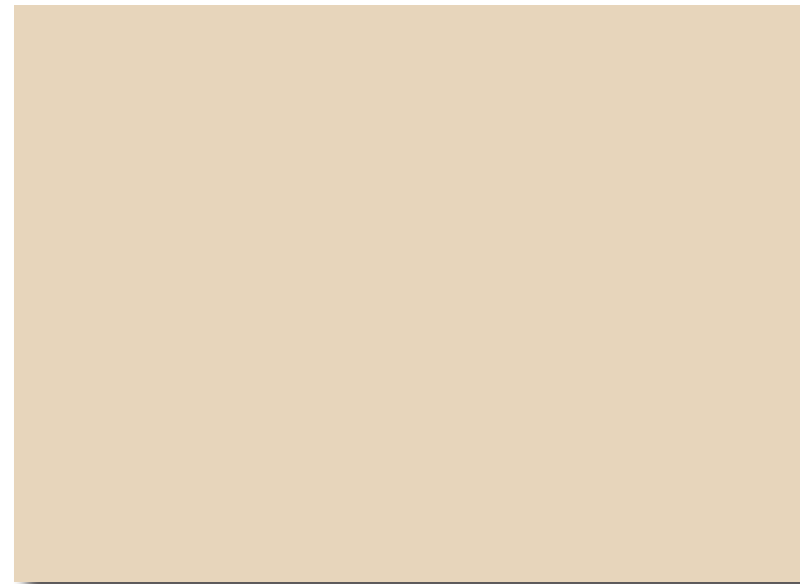
FLOORS/BASE

CPT-34 Interface
 Pattern: Nature Trails
 Custom Color: 176614 (Custom)

STW-4 National Tile & Terrazo
 Color: Heveleun Green Marble
 Size: 18" Marble

STW-5 National Tile & Terrazo
 Color: Heveleun Green Marble
 Size: 6" Marble

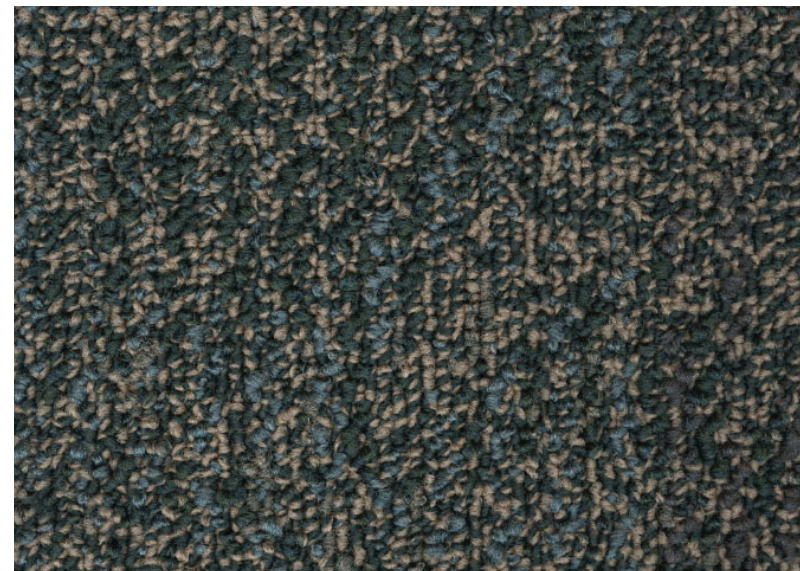
Important Disclaimer: Colors presented in this file are provided for general color information only. Due to many different monitor settings on individual computers and different light sources - these finishes may appear from actual color. Actual samples are available from the FPDC/FPS library located on the 8th floor of FHB or may be ordered directly from manufacturers.



PT-55



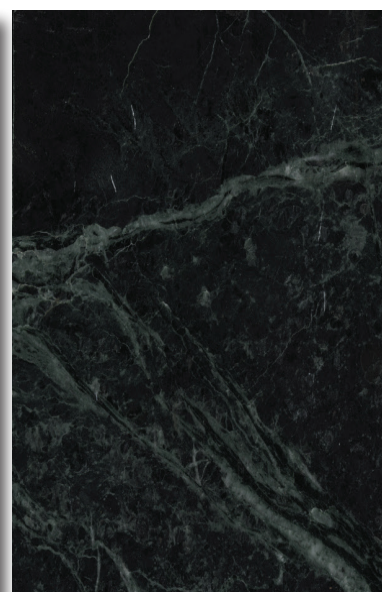
PT-56



CPT-34



STW-1, STW-2 & STW-3



STW-4 & STW-5



FACILITIES MANAGEMENT OFFICE OF

FACILITIES PLANNING,
 DESIGN AND
 CONSTRUCTION

INTERIOR FINISH STANDARDS
 FOR

1220 Holcombe Blvd
Mays Clinic
 (ACB)

SHEET TITLE:

ACB
 LOBBIES LEVEL 2
 TREE SCULPTURE &
 WEST LOBBY

LAST UPDATE:

01/05/2016

SHEET NO.:

33 OF 42

PRINT

BACK TO
 T.O.C.

NEXT PAGE

FINISH LEGEND

CEILING

ACT-2 Armstrong
 No.: 770, Cortega
 Color: White
 Finish: Medium Texture
 Size: 2'x2'x5/8"

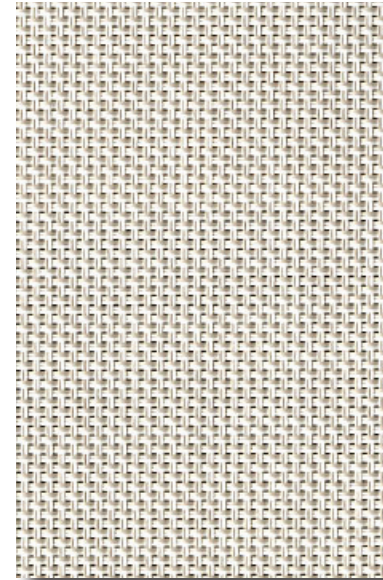


ACT-2

DOORS/ FRAMES

PL-38 Nevamar
 No.: WA-0002E, Tangier Anigre

PT-56 Benjamin Moore
 Color: AC-32, Pismo Dunes
 Finish: Semi-Gloss



WS-4

WALLS

PT-55 Benjamin Moore
 Color: OC-4, Brandy Cream
 Finish: Satin

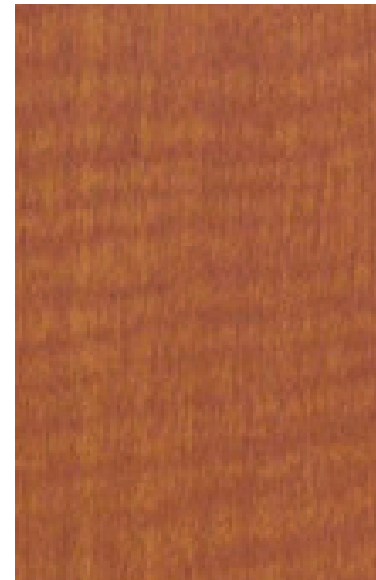


PT-55

FLOORS/ BASE

CPT-39 Interface
 Style: Southern Plains
 Color: 2844 Grassland

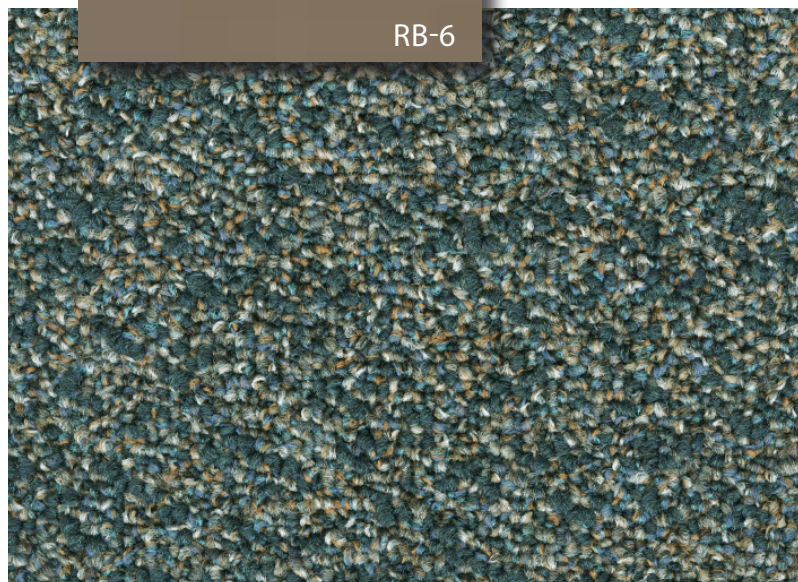
RB-6 Johnsonite, 4" Cove
 Color: 80, Fawn



PL-38



PT-56



RB-6

CPT-39

Important Disclaimer: Colors presented in this file are provided for general color information only. Due to many different monitor settings on individual computers and different light sources - these finishes may appear from actual color. Actual samples are available from the FPDC/FPS library located on the 8th floor of FHB or may be ordered directly from manufacturers.

FACILITIES MANAGEMENT OFFICE OF

FACILITIES PLANNING,
 DESIGN AND
 CONSTRUCTION

INTERIOR FINISH STANDARDS FOR

1220 Holcombe Blvd
Mays Clinic
 (ACB)

SHEET TITLE:

ACB GENERAL OFFICE AREAS

LAST UPDATE:

01/05/2016

SHEET NO.:

34 OF 42

PRINT

BACK TO
 T.O.C.

NEXT PAGE

FINISH LEGEND

CEILING

ACT-2 Armstrong
 No.: 770, Cortega
 Color: White
 Finish: Medium Texture
 Size: 2'x2'x5/8"

DOORS/ FRAMES

PL-38 Nevamar
 No.: WA-0002E, Tangier Anigre

PT-56 Benjamin Moore
 Color: AC-32, Pismo Dunes
 Finish: Semi-Gloss

WALLS

PT-55 Benjamin Moore
 Color: OC-4, Brandy Cream
 Finish: Satin

VWC-22 Maharam
 Pattern: "Honor Weave"
 Color: Flax #012

FLOORS/ BASE

CPT-34 Interface
 Pattern: Nature Trails
 Custom Color: 176614

RB-6 Johnsonite, 4"
 Color: 80, Fawn

ARCHITECTURAL WOODWORK

PL-38 Nevamar
 No.: WA-0002E, Tangier Anigre

SSM-9 Dupont "Corian"
 Color: Evergreen

SSM-10 Dupont "Corian"
 Color: Abalone

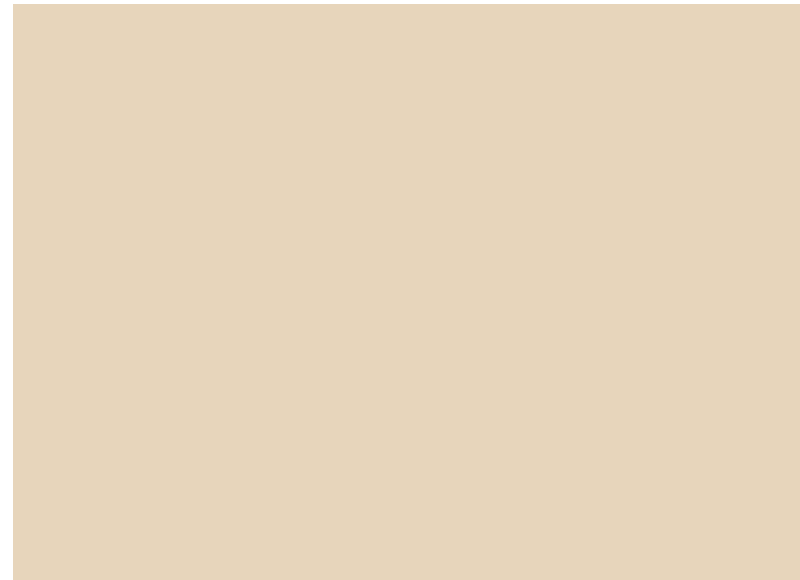
WINDOW TREATMENTS

WS-4 Mecoshade, Thermoveil
 Pattern: 1300 Series, Dense Basketweave
 Color: 1316, Eggshell

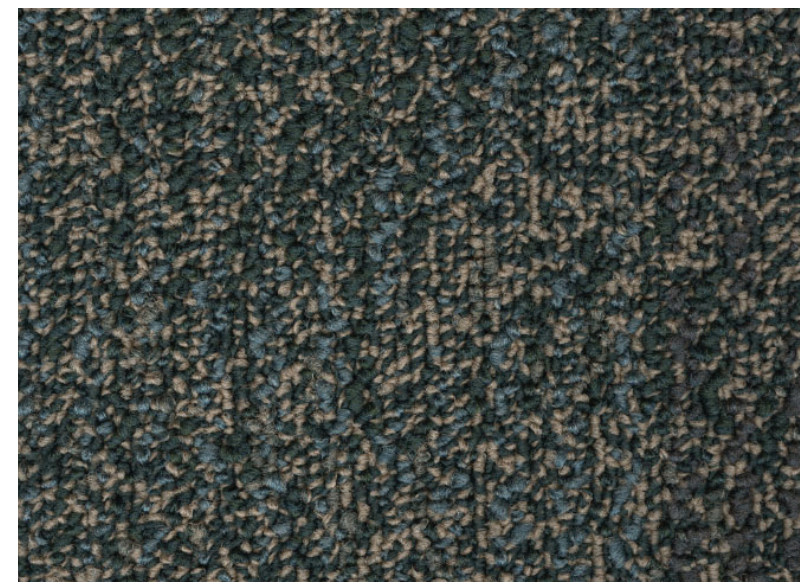
Important Disclaimer: Colors presented in this file are provided for general color information only. Due to many different monitor settings on individual computers and different light sources - these finishes may appear from actual color. Actual samples are available from the FPDC/FPS library located on the 8th floor of FHB or may be ordered directly from manufacturers.



ACT-2



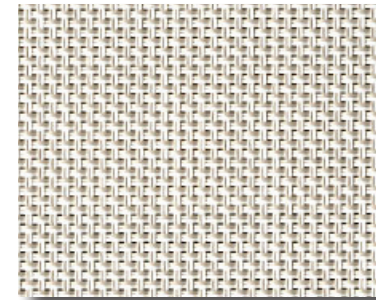
PT-55



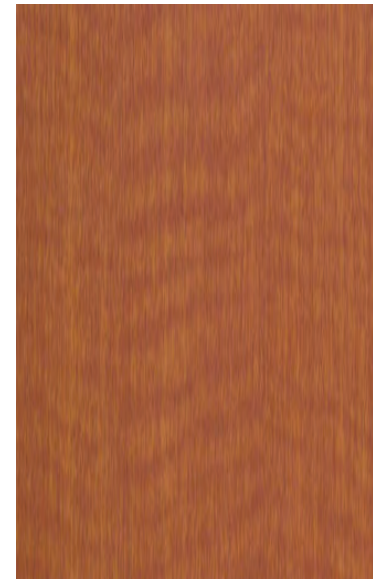
CPT-34



VWC-22



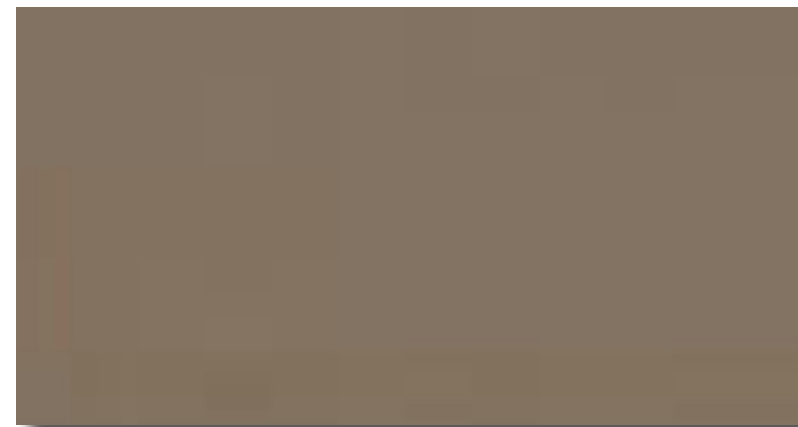
WS-4



PL-38



PT-56



RB-6



PL-38



SSM-9



SSM-10

SHEET TITLE:

ACB
 PUBLIC & RETAIL
 CENTERS

LAST UPDATE:

01/05/2016

SHEET NO.:

35 OF 42

PRINT

BACK TO
 T.O.C.

NEXT PAGE

FINISH LEGEND

CEILING

PT-55 Benjamin Moore
Color: OC-4, Brandy Cream
Finish: Satin

DOORS/ FRAMES

PT-56 Benjamin Moore
Color: AC-32, Pismo Dunes
Finish: Semi-Gloss

WALLS

PT-55 Benjamin Moore
Color: OC-4, Brandy Cream
Finish: Satin

FLOORS/ BASE

RF-1 Roppe #96 Vantage Profile
Color: #168 Deep Water
(Stair Treads/Risers)

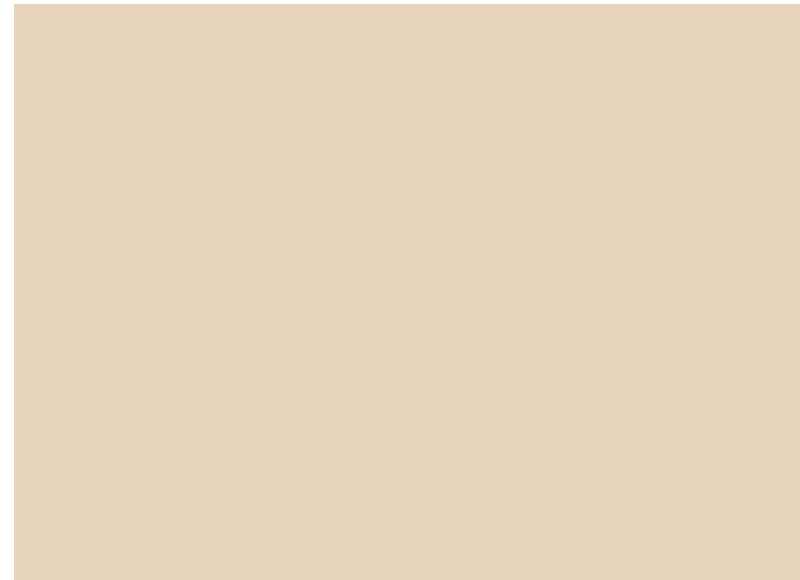
RF-2 Roppe #96 Vantage Profile
Color: #454 Helecho
(Landing)

RB-23 Roppe, 4" Cove
Color: 168 Deep Water

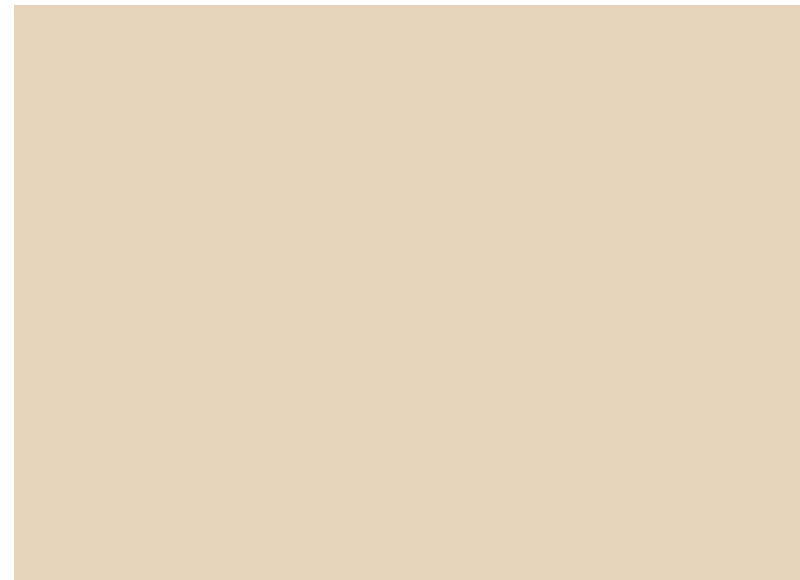
HANDRAILS

PT-57 Benjamin Moore
Color: 691, Dartmouth Green
Finish: Semi-Gloss

Important Disclaimer: Colors presented in this file are provided for general color information only. Due to many different monitor settings on individual computers and different light sources - these finishes may appear from actual color. Actual samples are available from the FPDC/FPS library located on the 8th floor of FHB or may be ordered directly from manufacturers.



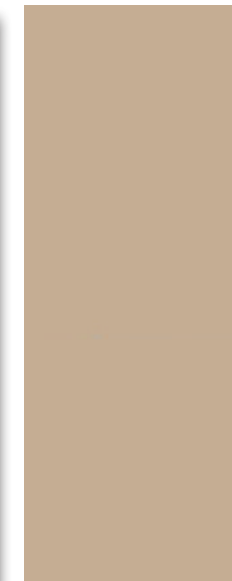
PT-55



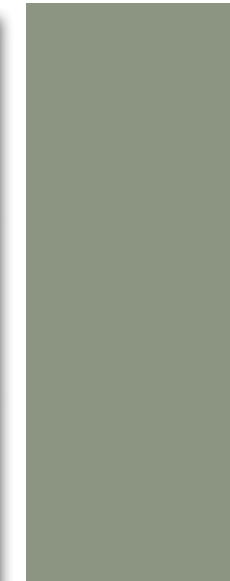
PT-55



RB-23



PT-56



PT-57



RF-2



RF-1

FACILITIES MANAGEMENT OFFICE OF

FACILITIES PLANNING,
DESIGN AND
CONSTRUCTION

INTERIOR FINISH STANDARDS
FOR

1220 Holcombe Blvd
Mays Clinic
(ACB)

SHEET TITLE:

ACB
STAIRWELLS

LAST UPDATE:

01/05/2016

SHEET NO.:

36 OF 42

PRINT

BACK TO
T.O.C.

NEXT PAGE

FINISH LEGEND

CEILING

ACT-2 Armstrong
No.: 770, Cortega
Color: White
Finish: Medium Texture
Size: 2'x2'x5/8"

DOORS/FRAMES

PT-56 Benjamin Moore
Color: AC-32, Pismo Dunes
Finish: Semi-Gloss

WALLS

PT-55 Benjamin Moore (Field)
Color: OC-4, Brandy Cream
Finish: Satin

FLOORS/BASE

SHV-2 Armstrong
Pattern: Medintech
Color: 86485, Freesia Pearl

WR-2 Armstrong (Welding Rod)
Pattern: Medintech
Color: 96485, Freesia Pearl

RB-6 Johnsonite, 4"
Color: 80, Fawn



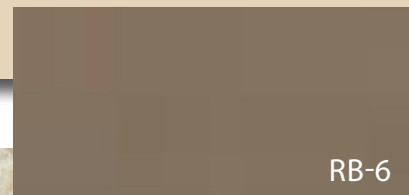
ACT-2



PT-55



PT-56



RB-6



SHV-2 / WR-2

Important Disclaimer: Colors presented in this file are provided for general color information only. Due to many different monitor settings on individual computers and different light sources - these finishes may appear from actual color. Actual samples are available from the FPDC/FPS library located on the 8th floor of FHB or may be ordered directly from manufacturers.

FACILITIES MANAGEMENT OFFICE OF

FACILITIES PLANNING,
DESIGN AND
CONSTRUCTION

INTERIOR FINISH STANDARDS FOR

1220 Holcombe Blvd
Mays Clinic
(ACB)

SHEET TITLE:

ACB STORAGE ROOMS

LAST UPDATE:

01/05/2016

SHEET NO.:

37 OF 42

PRINT

BACK TO
T.O.C.

NEXT PAGE

FINISH LEGEND

CEILING

ACT-2 Armstrong
 No.: 770, Cortega
 Color: White
 Finish: Medium Texture
 Size: 2'x2'x5/8"

DOORS/ FRAMES

PL-38 Nevamar
 No.: WA-0002E, Tangier Anigre

PT-56 Benjamin Moore
 Color: AC-32, Pismo Dunes
 Finish: Semi-Gloss

WALLS

TLW-11 DalTile,"Diamante", 12"x12" (Field)
 Color: P024, Sabbia
 Finish: Polished

TLW-15 DalTile,"Diamante", (Accent)
 Color: P027, Ardesia
 Finish: Polished
 Size: As Noted

TLW-16 DalTile,"Diamante", (Accent)
 Color: P031, Verde
 Finish: Polished
 Size: As Noted

FLOORS/ BASE

TLF-18 DalTile,"Diamante",12"x12"(Field)
 Color: P024, Sabbia
 Finish: Matte

TLW-11 DalTile,"Diamante", Trim
 Color: P024, Sabbia
 Finish: Polished
 Size: As Noted

TLW-16 DalTile,"Diamante", Trim
 Color: P031, Verde
 Finish: Polished
 Size: As Noted

ARCHITECTURAL WOODWORK

PL-22 Nevamar(Partitions-overphenolicresin core)
 Color: #W8348CognacBirdseyeVelvet

SSM-8 Dupon,"Corian" (Sink)
 Color: Bisque

SSM-13 Dupon,"Corian" (Sink Counter)
 Color: Rainforest

Important Disclaimer: Colors presented in this file are provided for general color information only. Due to many different monitor settings on individual computers and different light sources - these finishes may appear from actual color. Actual samples are available from the FPDC/FPS library located on the 8th floor of FHB or may be ordered directly from manufacturers.



ACT-2



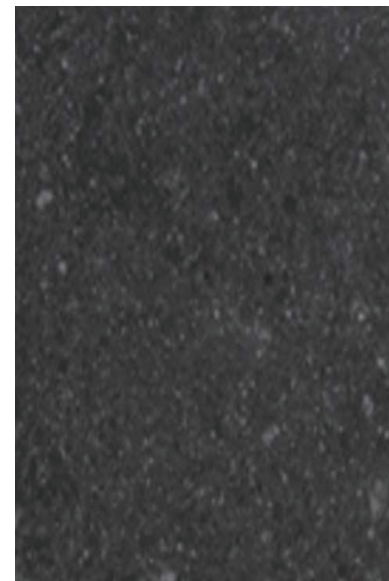
PL-38



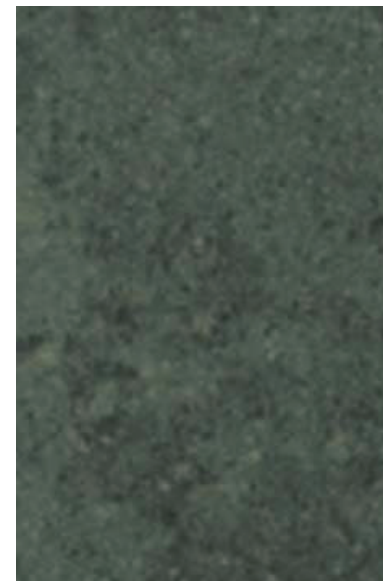
PT-56



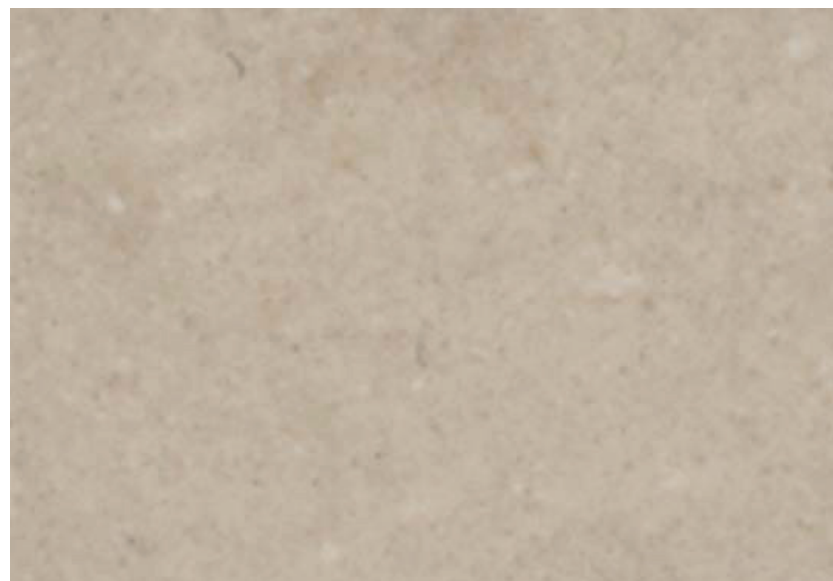
TLW-11



TLW-15



TLW-16



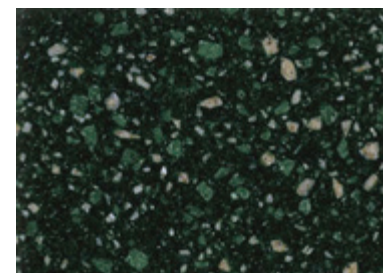
TLF-18



PL-22



SSM-8



SSM-13

SHEET TITLE:

ACB
 TOILETS
 (PUBLIC)

LAST UPDATE:

01/05/2016

SHEET NO.:

38 OF 42

PRINT

BACK TO
 T.O.C.

NEXT PAGE

FINISH LEGEND

CEILING

ACT-2 Armstrong
No.: 770, Cortega
Color: White
Finish: Medium Texture
Size: 2'x2'x5/8"

DOORS/ FRAMES

PL-38 Nevamar
No.: WA-0002E, Tangier Anigre

PT-56 Benjamin Moore
Color: AC-32, Pismo Dunes
Finish: Semi-Gloss

WALLS

TLW-12 DalTile,"Porcealto", 12"x12" (Field)
Color: CD-58 Bianco Sardo
Finish: Polished

FLOORS/ BASE

TLF-11 DalTile,"Porcealto", 12"x12" (Field)
Color: CD-58 Bianco Sardo
Finish: Matte

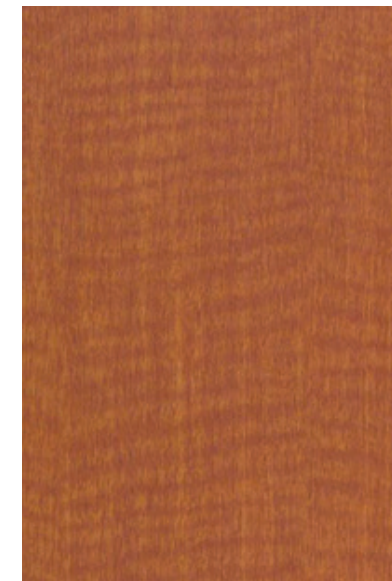
TLF-12 DalTile,"Porcealto",
Style: #S3689T Porcelain
Tile Coved Base
Color: Matches CD-58
Bianco Sardo
Finish: Polished



ACT-2



TLW-12



PL-38



PT-56



TLF-11

Important Disclaimer: Colors presented in this file are provided for general color information only. Due to many different monitor settings on individual computers and different light sources - these finishes may appear from actual color. Actual samples are available from the FPDC/FPS library located on the 8th floor of FHB or may be ordered directly from manufacturers.

SHEET TITLE:

ACB
TOILETS
(SINGLE USER & STAFF)

LAST UPDATE:

01/05/2016

SHEET NO.:

39 OF 42

PRINT

BACK TO
T.O.C.

NEXT PAGE

FINISH LEGEND

CEILING

Soiled - Gyp Board
 PT-55 Benjamin Moore (Painted Gypboard)
 Color: OC-4, Brandy Cream
 Finish: Satin

Clean
 ACT-2 Armstrong
 No.: 770, Cortega
 Color: White
 Finish: Medium Texture
 Size: 2'x2'x5/8"

DOORS/FRAMES

PL-38 Nevamar
 No.: WA-0002E, Tangier Anigre

PT-56 Benjamin Moore
 Color: AC-32, Pismo Dunes
 Finish: Semi-Gloss

WALLS

PT-55 Benjamin Moore (Field)
 Color: OC-4, Brandy Cream
 Finish: Satin

FLOORS/BASE

SHV-2 Armstrong (Floor & Base)
 Pattern: Medintech
 Color: 86485, Freesia Pearl

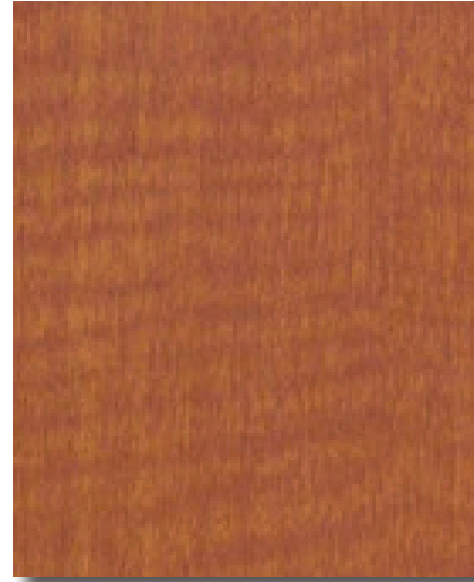
WR-2 Armstrong (Welding Rod for Floor & Base)
 Pattern: Medintech
 Color: 96485, Freesia Pearl

Soiled - Integral Base

Clean -
 RB-6 Johnsonite, 4"
 Color: 80, Fawn



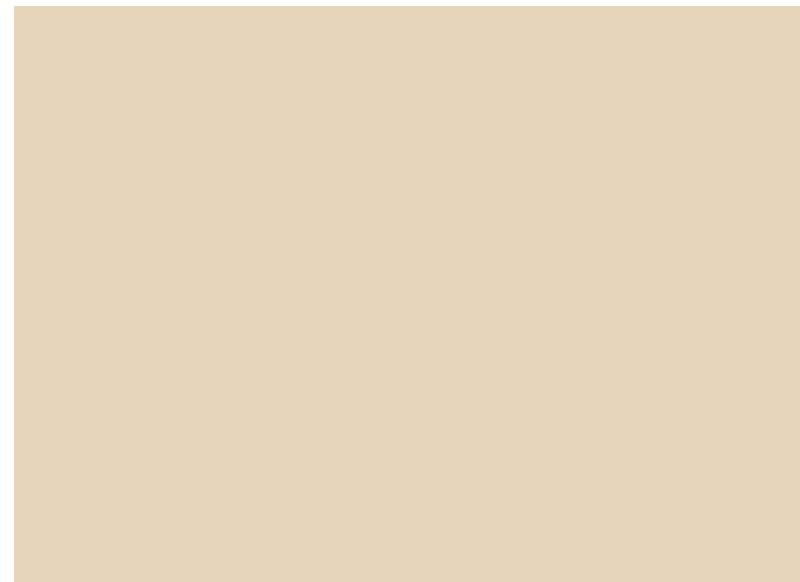
ACT-2



PL-38



PT-56



PT-55



RB-6



SHV-2 / WR-2

Important Disclaimer: Colors presented in this file are provided for general color information only. Due to many different monitor settings on individual computers and different light sources - these finishes may appear from actual color. Actual samples are available from the FPDC/FPS library located on the 8th floor of FHB or may be ordered directly from manufacturers.

FACILITIES MANAGEMENT OFFICE OF

FACILITIES PLANNING,
 DESIGN AND
 CONSTRUCTION

INTERIOR FINISH STANDARDS FOR

1220 Holcombe Blvd
Mays Clinic
 (ACB)

SHEET TITLE:

ACB
UTILITY ROOMS
(CLEAN & SOILED)

LAST UPDATE:

01/05/2016

SHEET NO.:

40 OF 42

PRINT

BACK TO
 T.O.C.

NEXT PAGE

FINISH LEGEND

CEILING

ACT-2 Armstrong
 No.: 770, Cortega
 Color: White
 Finish: Medium Texture
 Size: 2'x2'x5/8"

ACT-9 Decoustics Custom
 Color: White
 Claro finish on Ceilencio System-

DOORS/ FRAMES

PL-38 Nevamar
 No.: WA-0002E, Tangier Anigre

PT-56 Benjamin Moore
 Color: AC-32, Pismo Dunes
 Finish: Semi-Gross

WALLS

VWC-22 Maharam
 Pattern: 395510, Honor Weave
 Color: 012, Flax

PT-55 Benjamin Moore
 Color: OC-4, Brandy Cream
 Finish: Satin

PT-57 Benjamin Moore (Facia Walls)
 Color: BM-691, Dartmouth Green

PT-60 Benjamin Moore (Facia Walls)
 Color: PT-60, Bella Blue

PT-63 Benjamin Moore (Facia Walls)
 Color: 1413, Purple Haze

FLOORS/ BASE

CPT-44 Interface
 Pattern: Route 66
 Color: 5191, Holbrook

RB-6 Johnsonite, 4"
 Color: 80, Fawn

ARCHITECTURAL WOODWORK

PL-38 Nevamar
 No.: WA-0002E, Tangier Anigre

PL-40 WilsonArt
 No.: 10768-60, Golden Anigre

SSM-9 Dupont "Corian"
 Color: Evergreen

SSM-10 Dupont "Corian"
 Color: Abalone

SSM-12 Dupont "Corian"
 Color: Tumbled Glass

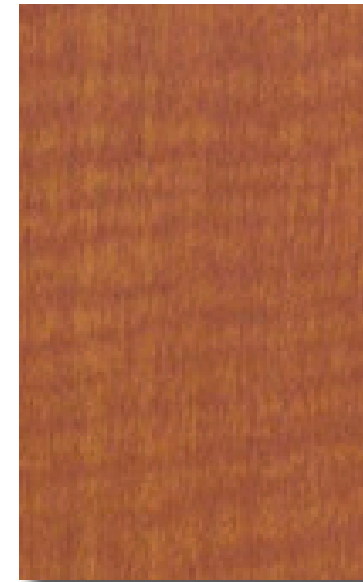
Important Disclaimer: Colors presented in this file are provided for general color information only. Due to many different monitor settings on individual computers and different light sources - these finishes may appear from actual color. Actual samples are available from the FPDC/FPS library located on the 8th floor of FHB or may be ordered directly from manufacturers.



ACT-2



ACT-9



PL-38



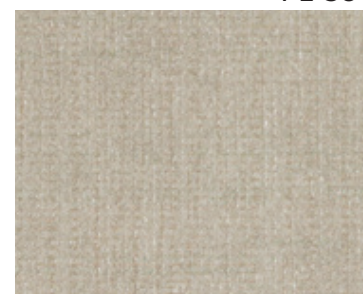
PT-56



PT-57



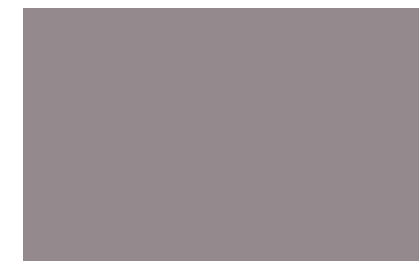
VWC-22



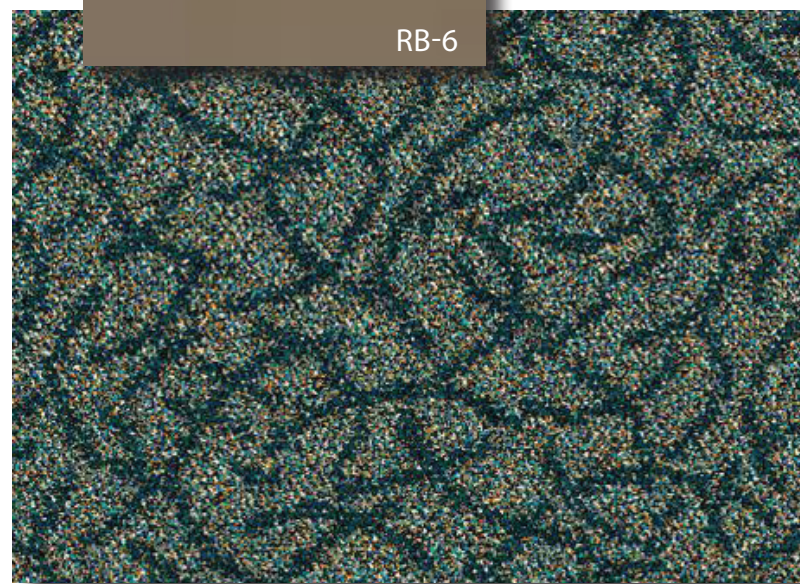
VWC-22



PT-60



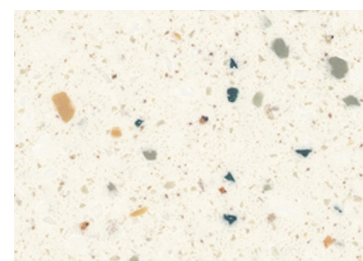
PT-63



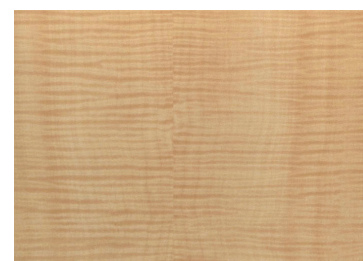
RB-6



SSM-10



SSM-12



PL-40



SSM-9

SHEET TITLE:

ACB
 SUB-WAITING ROOMS
 (OUTPATIENT CLINIC)

LAST UPDATE:

01/05/2016

SHEET NO.:

41 OF 42

PRINT

BACK TO
 T.O.C.

NEXT PAGE

DOCUMENT REVISION HISTORY

Issue	Date	Revision Description	Revisor
Rev. 0	07/12/2010	Initial Adoption of ACB Interior Finishes.	JK, KB
Rev. 1	08/21/2011	Revised finish schedule and links.	JKT
Rev. 2	09/24/2012	Revised finish schedule, links and images.	JKT/LT
Rev. 3	01/13/2014	Revised departmental name, updated finish schedules.	JKT
Rev. 4	01/05/2016	Revised finish schedule and links.	JKT

THE UNIVERSITY OF TEXAS
MD Anderson
~~Cancer Center~~

**FACILITIES
MANAGEMENT
OFFICE OF**

FACILITIES PLANNING,
DESIGN AND
CONSTRUCTION

INTERIOR FINISH STANDARDS
FOR

1220 Holcombe Blvd
Mays Clinic
(ACB)

SHEET TITLE:

**ACB
DOCUMENT REVISION
HISTORY**

LAST UPDATE:

01/05/2016

SHEET NO.:

42 OF 42